



SANGFOR

# **SANGFOR\_IAM\_v11.9\_ SMS-based Authentication Configuration Guide**

SANGFOR Technologies Inc.

7<sup>th</sup> Dec 2017

*Your Future-Proof IT Enabler*

**Sangfor Technologies**

Block A1, Nanshan iPark, No.1001 Xueyuan Road, Nanshan District, Shenzhen, China


T.: +86 755 2654 8888 (7511) | E.: tech.support@sangfor.com | W.: www.sangfor.com



## Declaration

Copyright © SANGFOR Technologies Inc. All rights reserved.

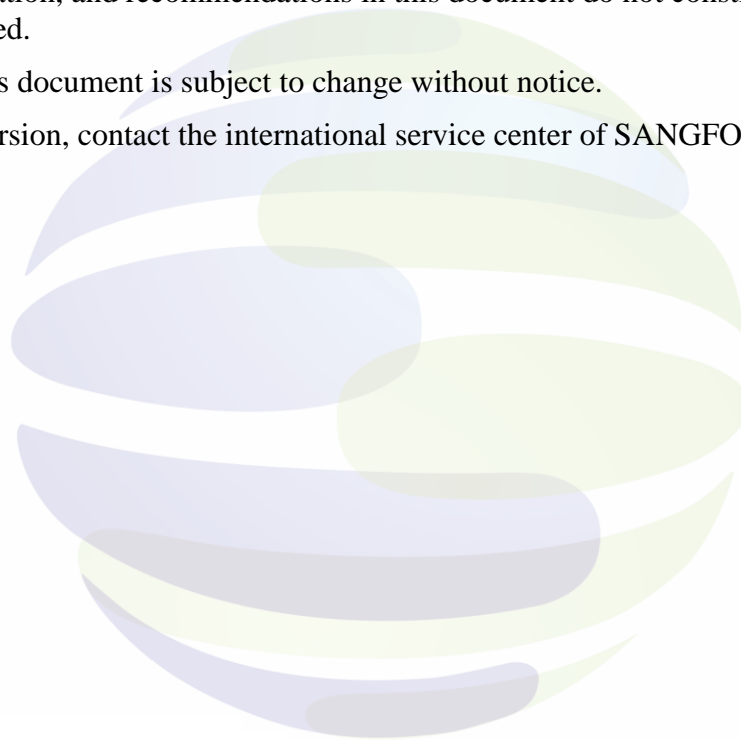
No part of this document may be reproduced or transmitted in any form or by any means without prior written consent of SANGFOR Technologies Inc.

SANGFOR, SINFOR and  logo are the trademarks of SANGFOR Technologies Inc. All other trademarks and trade names mentioned in this document are the property of their respective holders.

Every effort has been made in the preparation of this document to ensure accuracy of the contents, but all statements, information, and recommendations in this document do not constitute a warranty of any kind, express or implied.

The information in this document is subject to change without notice.

To obtain the latest version, contact the international service center of SANGFOR Technologies Inc.



*Your Future-Proof IT Enabler*

### **Sangfor Technologies**

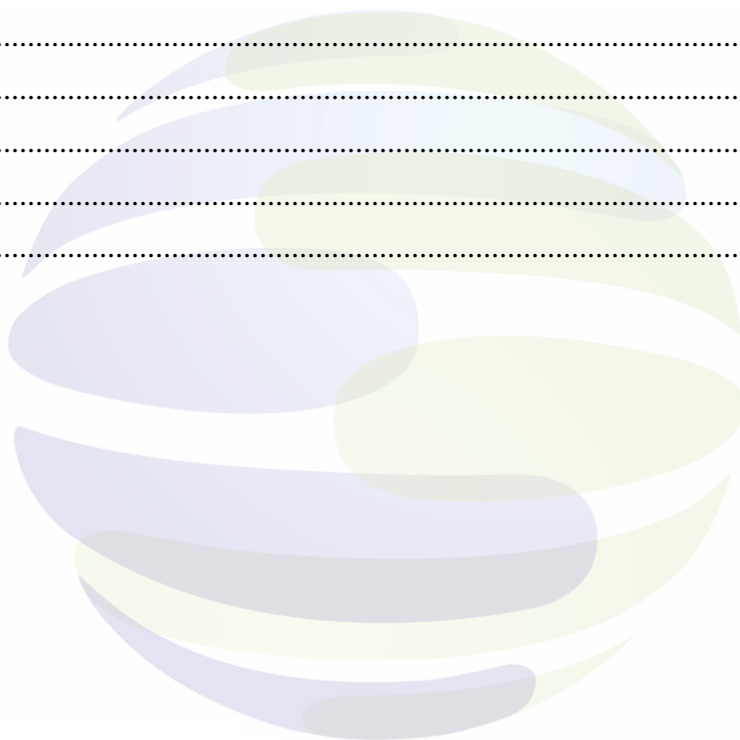
Block A1, Nanshan iPark, No.1001 Xueyuan Road, Nanshan District, Shenzhen, China

T.: +60 12711 7129 (7511) | E.: tech.support@sangfor.com | W.: www.sangfor.com



## Table of contents

<b>Declaration</b>	2
Table of contents	3
<b>1 Introduction</b>	4
1.1 Abbreviations and conventions	4
1.2 Feedback	4
<b>2 Scenario</b>	4
<b>3 Requirements</b>	4
<b>4 Steps</b>	4
<b>5 Testing Results</b>	8
<b>6 Precautions</b>	9



*Your Future-Proof IT Enabler*

**Sangfor Technologies**

Block A1, Nanshan iPark, No.1001 Xueyuan Road, Nanshan District, Shenzhen, China

T.: +60 12711 7129 (7511) | E.: tech.support@sangfor.com | W.: www.sangfor.com



# 1 Introduction

## 1.1 Abbreviations and conventions

IAM in this article refers to the SANGFOR IAM device.

## 1.2 Feedback

If you find any questions of this documents, please feel free to give us feedback, email: tech.support@sangfor.com.

# 2 Scenario

SMS-based authentication integrates with customer's current using ISP to achieve SMS authentication.

# 3 Requirements

List down the requirements for this configuration, for instance:

1. IAM.
2. Webservice parameter provided by ISP.

# 4 Steps

**Step 1:** Configure External authentication server

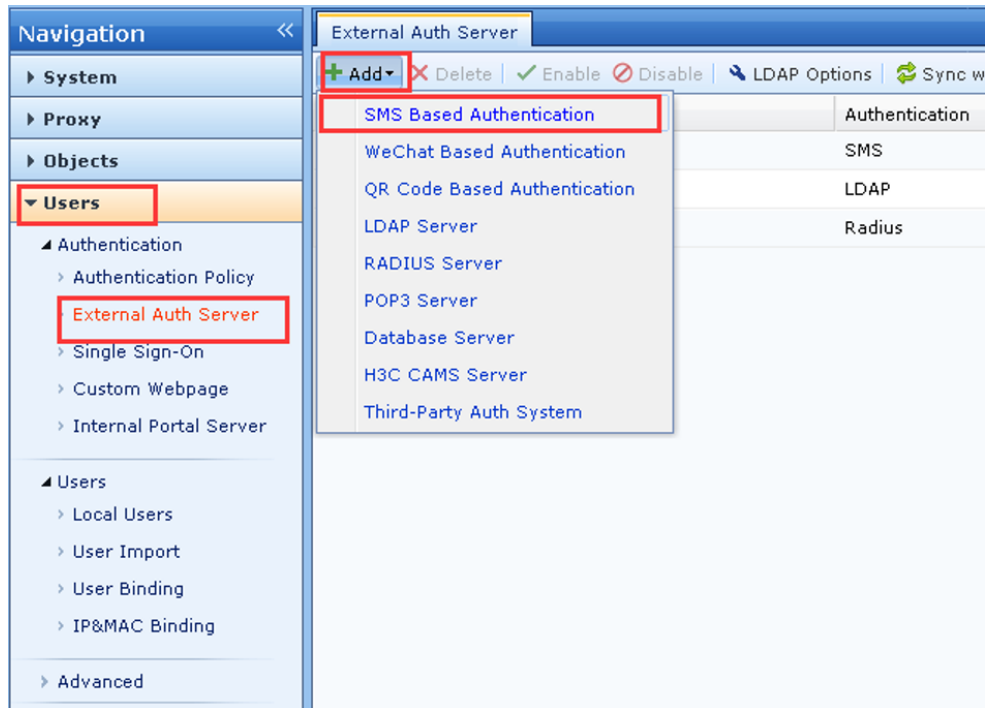
[Users] – [Authentication] – [External Auth Server], click [Add] and choose [SMS Based Authentication]

*Your Future-Proof IT Enabler*

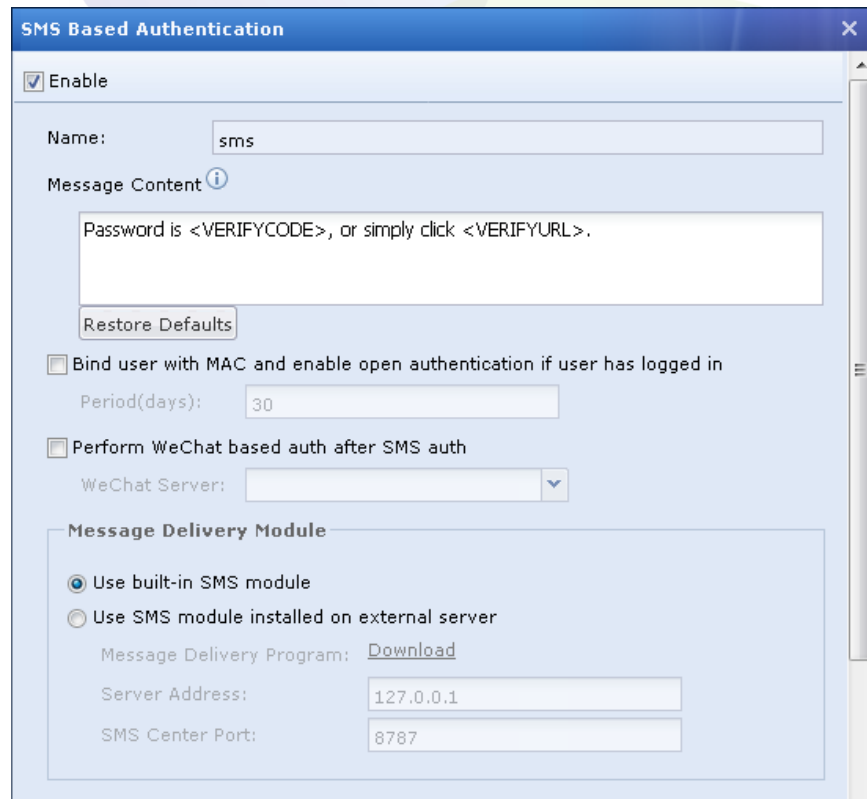
**Sangfor Technologies**

Block A1, Nanshan iPark, No.1001 Xueyuan Road, Nanshan District, Shenzhen, China

T.: +60 12711 7129 (7511) | E.: tech.support@sangfor.com | W.: www.sangfor.com



SMS Based Authentication template:



The screenshot shows the 'SMS Based Authentication' configuration window. The 'Enable' checkbox is checked. The 'Name' field is set to 'sms'. The 'Message Content' field contains the text 'Password is <VERIFYCODE>, or simply click <VERIFYURL>.'. The 'Restore Defaults' button is visible. The 'Bind user with MAC and enable open authentication if user has logged in' checkbox is unchecked, and the 'Period(days)' is set to 30. The 'Perform WeChat based auth after SMS auth' checkbox is unchecked, and the 'WeChat Server' dropdown is empty. The 'Message Delivery Module' section has 'Use built-in SMS module' selected. The 'Message Delivery Program' is 'Download'. The 'Server Address' is '127.0.0.1' and the 'SMS Center Port' is '8787'.

*Your Future-Proof IT Enabler*

**Sangfor Technologies**

Block A1, Nanshan iPark, No.1001 Xueyuan Road, Nanshan District, Shenzhen, China

T.: +60 12711 7129 (7511) | E.: tech.support@sangfor.com | W.: www.sangfor.com



(These parameters should be provided by ISP)

### **Settings Description**

- Type : GSM Modem
- Country Code : Fill in respective country code
- SMS Center : Fill in the phone card's SMS center. (Can call the phone card operator to ask)
- COM Port : The COM0 port is selected by default, that is, the COM0 port on the device.  
If there is a problem with the COM0 port or it is occupied by other devices, you can connect the GSM Modem to the COM1 port of the device, and also

### *Your Future-Proof IT Enabler*

#### **Sangfor Technologies**

Block A1, Nanshan iPark, No.1001 Xueyuan Road, Nanshan District, Shenzhen, China

T.: +60 12711 7129 (7511) | E.: tech.support@sangfor.com | W.: www.sangfor.com

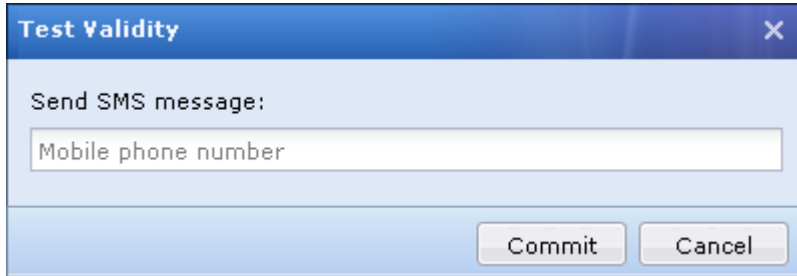


need to set it to COM1 here

COM Baud Rate : 115200 (The baud rate for both GSM and CDMA is 115200)

### **Test Validity**

Click "Test Validity", you can enter your mobile number to test if you can receive SMS normally.



Step 2: Configure authentication policy

[Users] – [Authentication] – [Authentication Policy], click [Add], choose [Password based] for [Auth method] and the newly created SMS external authentication server for [Auth Server].

*Your Future-Proof IT Enabler*

#### **Sangfor Technologies**

Block A1, Nanshan iPark, No.1001 Xueyuan Road, Nanshan District, Shenzhen, China

T.: +60 12711 7129 (7511) | E.: tech.support@sangfor.com | W.: www.sangfor.com



**Authentication Policy**

☒ Enable

Name: Password authentication

Description:

Objects

**Auth Method**

Action

Auth Method:

☐ Open authentication

☒ Password based

☐ Single Sign-On(SSO)

☐ Disabled (requests are rejected always)

Auth Server: sms

Captive Portal: Page: Without Slideshow Preview

Login Redirection: [Login successful webpage](#)

Commit Cancel

## 5 Testing Results

1. PC access to Internet webpage will be redirected to SMS authentication page. Enter the phone number to get the OTP code. Type in the received OTP code to complete the authentication.

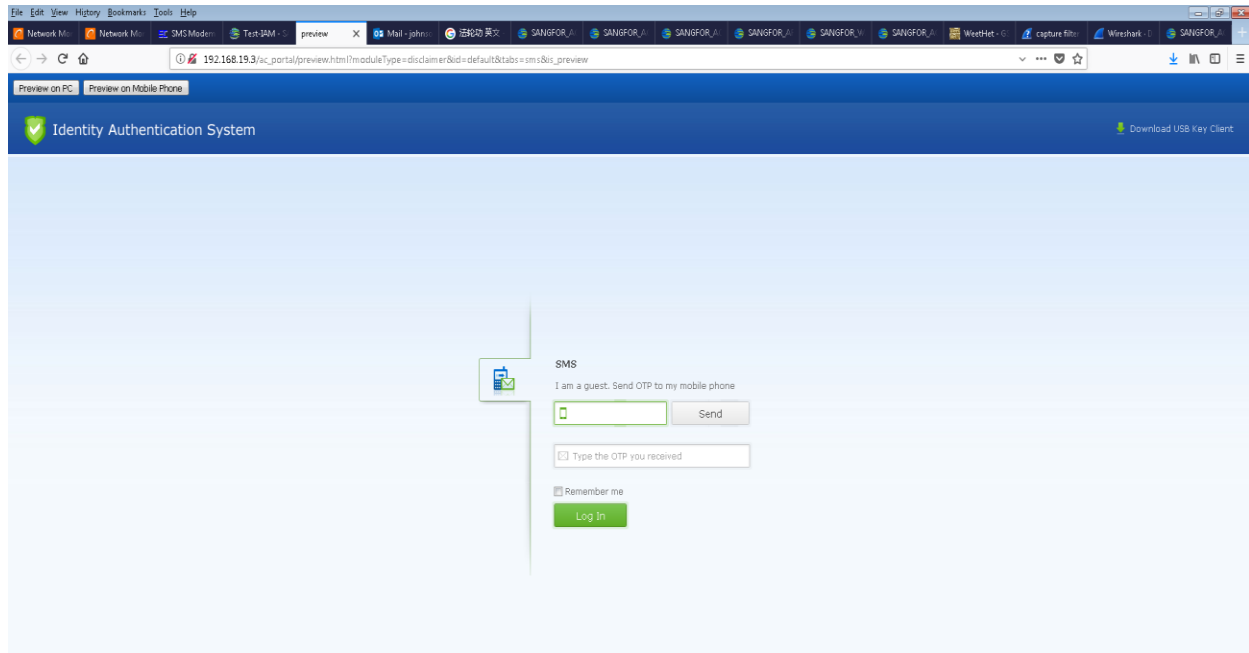
*Your Future-Proof IT Enabler*

**Sangfor Technologies**

Block A1, Nanshan iPark, No.1001 Xueyuan Road, Nanshan District, Shenzhen, China

T.: +60 12711 7129 (7511) | E.: tech.support@sangfor.com | W.: www.sangfor.com





2. Under [System] – [Status] – [Online Users], users who authenticated with SMS will be listed. When [Audit Policy] is enabled, customer can search user's logs by using corresponding phone number.

## 6 Precautions

1. Single-arm mode does not support SMS authentication. The related page is grayed.
2. COM port setting, if the Modem is connected to the device, set it from the com0 port.
3. When using SMS authentication, IAM will send a command to the GSM Modem. If the GSM Modem does not respond, IAM will treat the SMS modem is abnormal and the SMS authentication policy will become invalid, then user goes online with the IP address. This requirement is used when the GSM Modem is abnormal and does not affect the user's Internet access.

*Your Future-Proof IT Enabler*

**Sangfor Technologies**

Block A1, Nanshan iPark, No.1001 Xueyuan Road, Nanshan District, Shenzhen, China

T.: +60 12711 7129 (7511) | E.: tech.support@sangfor.com | W.: www.sangfor.com