



SANGFOR



NGAF

Bandwidth Management Configuration Guide

Version 8.0.8



Change Log

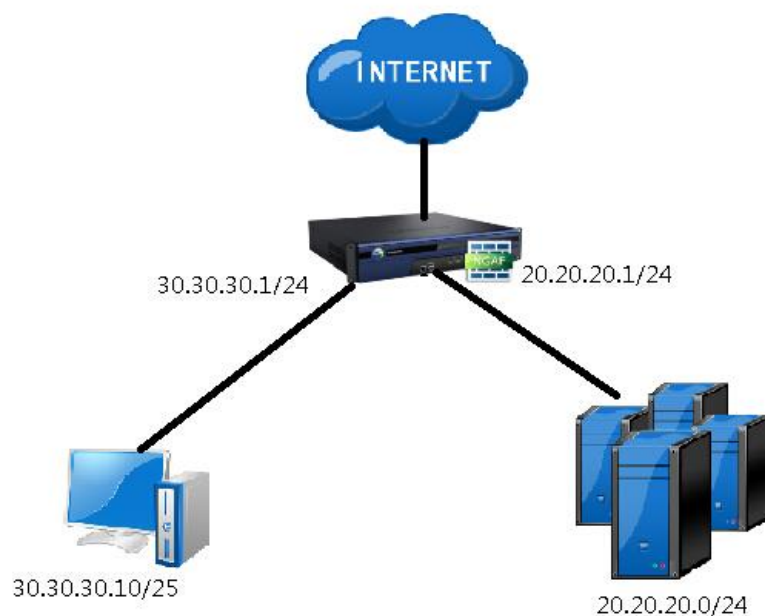
Date	Change Description
Nov 14,2019	Bandwidth Management Configuration Guide.

CONTENT

Chapter 1 Application Scenario	1
Chapter 2 Configuration Method.....	2
Chapter 3 Precautions	7

Chapter 1 Application Scenario

To prevent thunder downloader in LAN, the application that occupy the highest bandwidth is video browsing. If the bandwidth has been occupied by video browsing it may cause other user who needs Internet access has very little bandwidth. Usually this is used to control the traffic in a LAN. The following diagram is the topology to test bandwidth management:

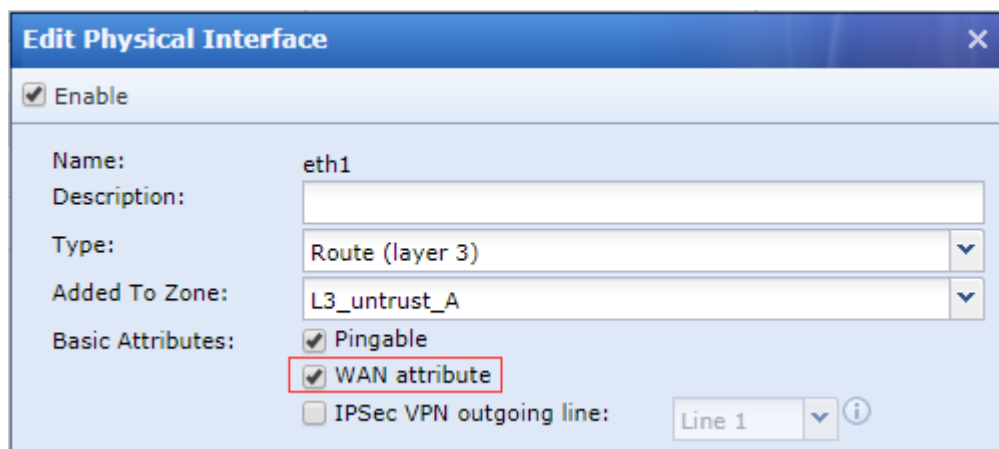


Configuration Step:

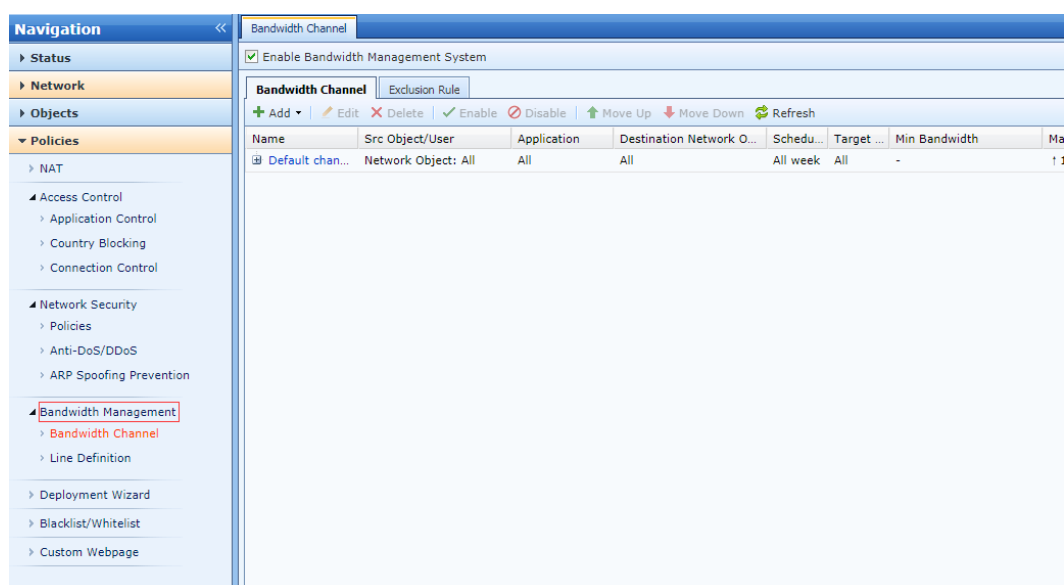
- (1) Set the corresponding external interface as the WAN attribute.
- (2) Create a new line policy.
- (3) Configure the bandwidth channel and select the corresponding application.

Chapter 2 Configuration Method

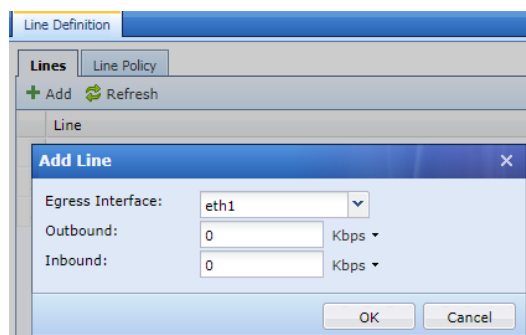
1. Go to **Network > Interfaces** check which interface is the WAN attribute.



2. Identify the requirement of the bandwidth control to specific application of the LAN which includes guaranteed bandwidth. Then configure bandwidth according to requirement.



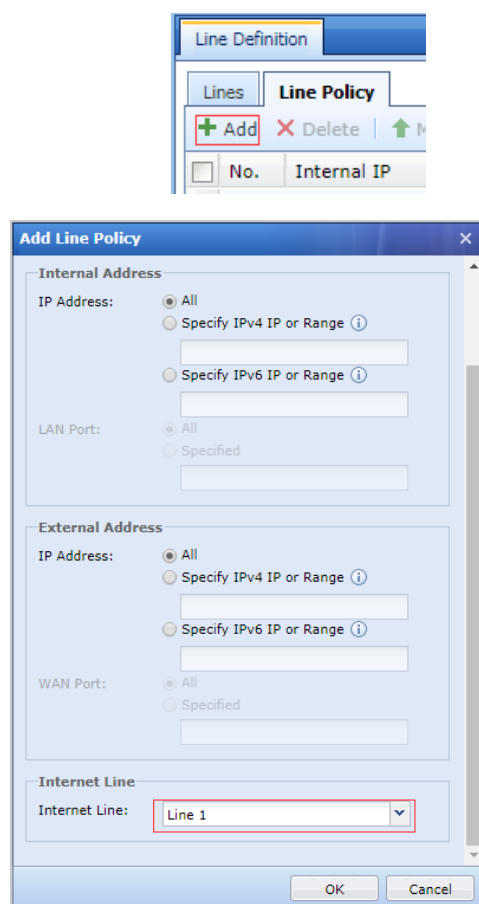
3. Go to **Policies > Bandwidth Management > Line Definition**, click lines and add a new line and the interface as egress interface and configure the outbound and inbound bandwidth.



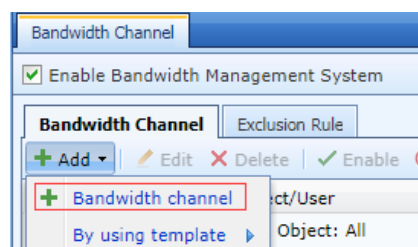
Precautions: Outbound and inbound are recommended to fill in the actual bandwidth of the ISP.

Otherwise, bandwidth control based on the bandwidth ratio may not take effect(1KB=8Kb, 1MB=8Mb).

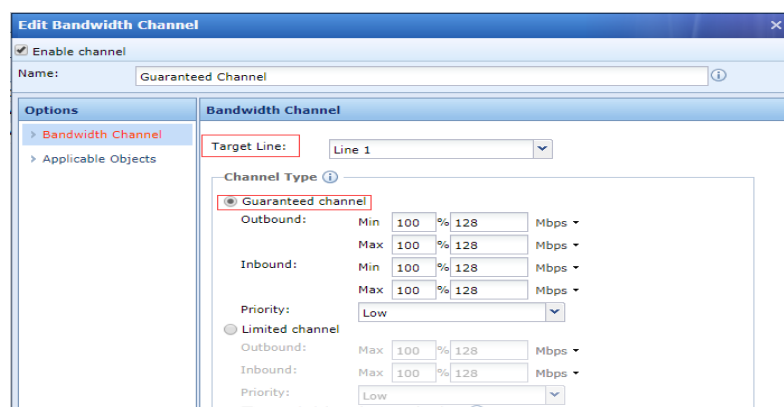
- Next click on the line policy to create a new line policy for the line that just created.



- Go to **Policies > Bandwidth Management > Bandwidth Channel**, add a bandwidth channel.



- Configure the guaranteed channel or limited channel accordingly, the target line is the line that you wish to control.



7. If you wish to have bandwidth limit per-ser you may turn on Per-User Max Bandwidth.

☐ **Per-User Max Bandwidth**

Outbound: Kbps ▼

Inbound: Kbps ▼

Advanced

☐ Make allocated bandwidth on this bandwidth channel shared evenly among external IP addresses and Per-User Max Bandwidth setting applied to each of them (typically selected for server providing external services)

8. Then click on Applicable Objects to configure the application that you wish to have apply bandwidth control.

Edit Bandwidth Channel

☒ Enable channel

Name:

Options

- > Bandwidth Channel
- > **Applicable Objects**

Applicable Objects

Application: ☐ All ☒ Specified

Applications: Streaming Media/All, IM/All

Src Object/User: ☒ Network Objects ☐ User/Group

Testing IP Group

Schedule:

Destination: ☒ Network Objects ☐ All ☐ Region

Select Country/Region

☒ Sub-Interface ☐ VLAN

All

VLAN

9. Choose the application that you wish to apply bandwidth control.

Select Application

View:

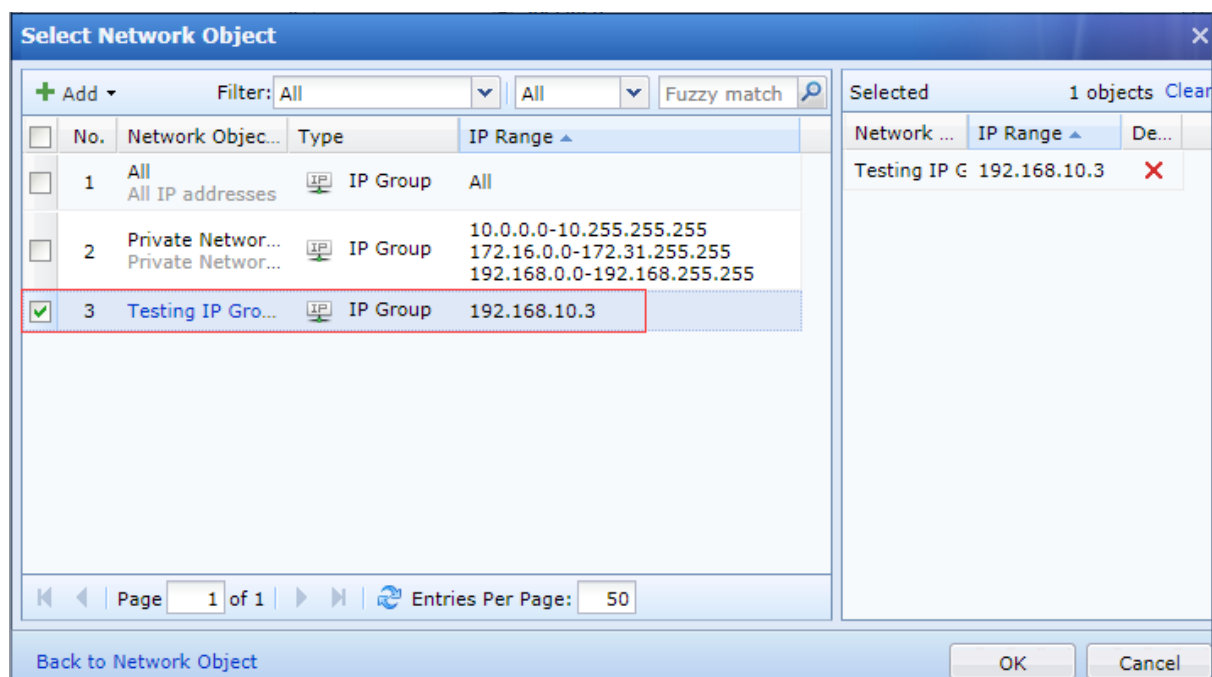
Application category

- ☒ Known categories
 - ☒ Streaming Media
 - ☐ File Transfer
 - ☐ Game
 - ☒ IM
 - ☐ P2P Stream Media
 - ☐ P2P
 - ☐ Download Tools
 - ☐ HTTP Application
 - ☐ FTP
 - ☐ Mail
 - ☐ DNS

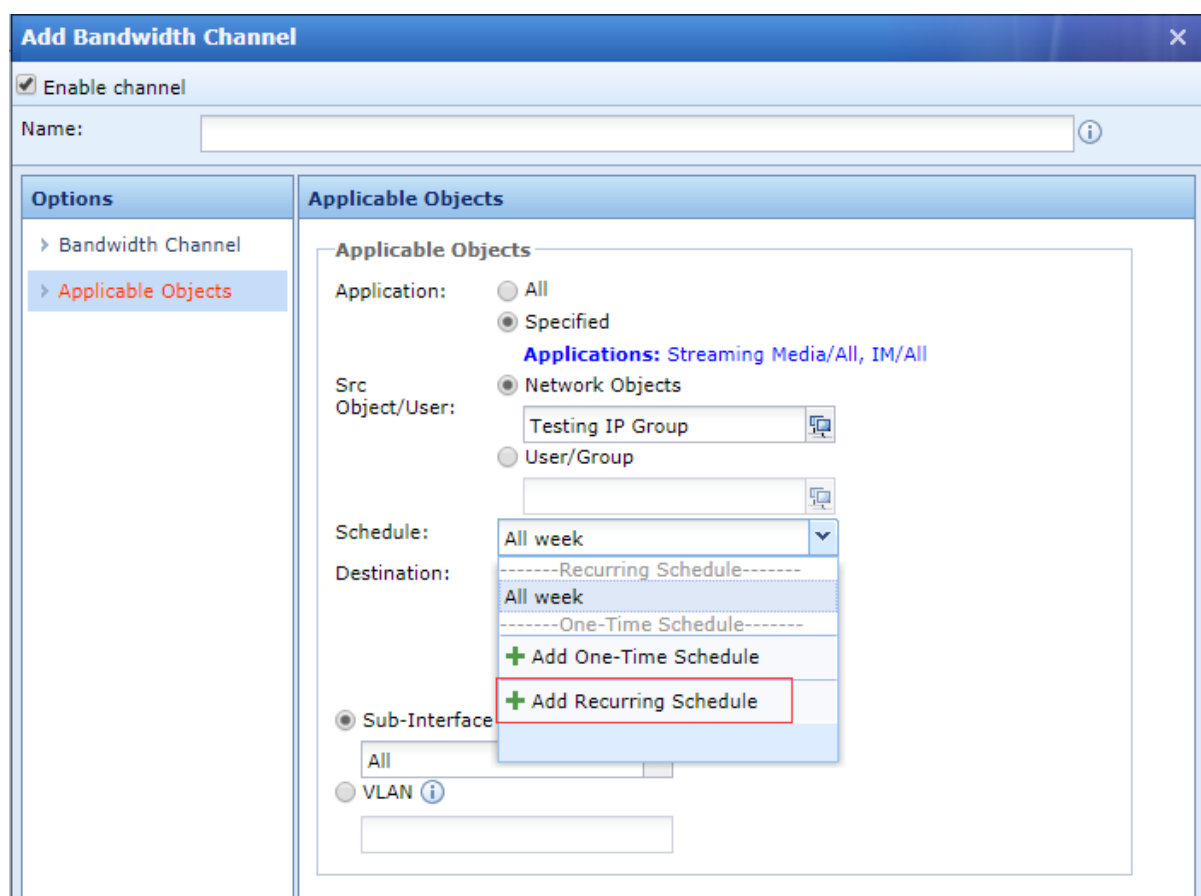
Selected Selected: 2

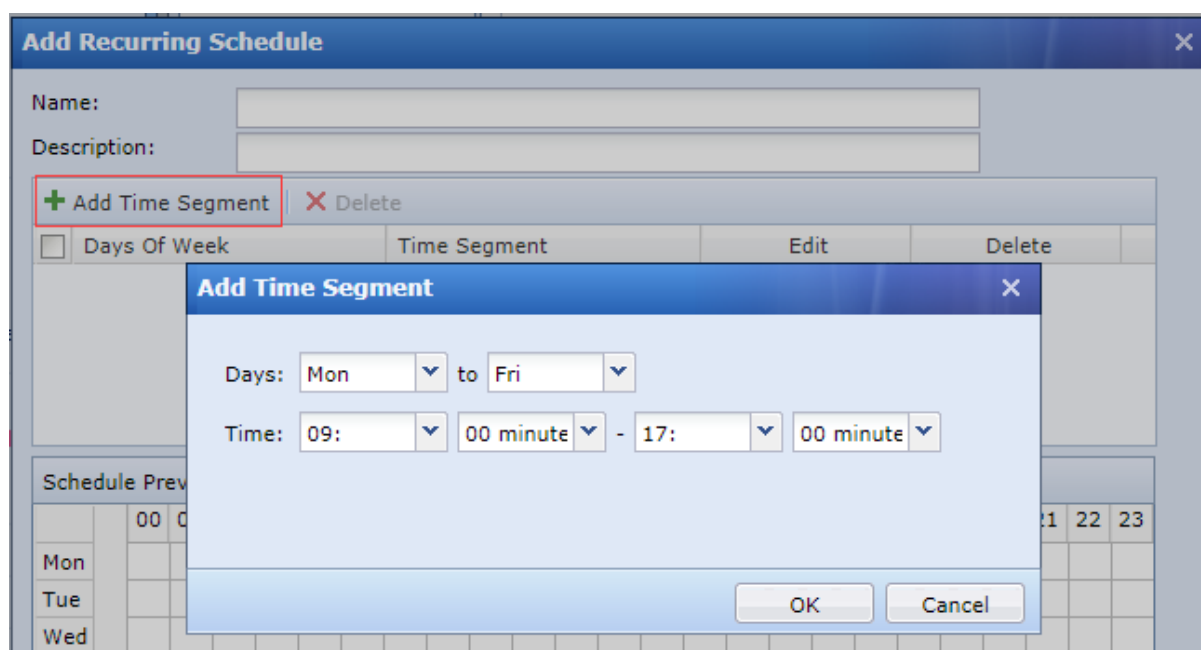
Name	Type	Delete
Streaming Media/All	Application	✗
IM/All	Application	✗

10. Choose the IP group that you wish to have bandwidth control.

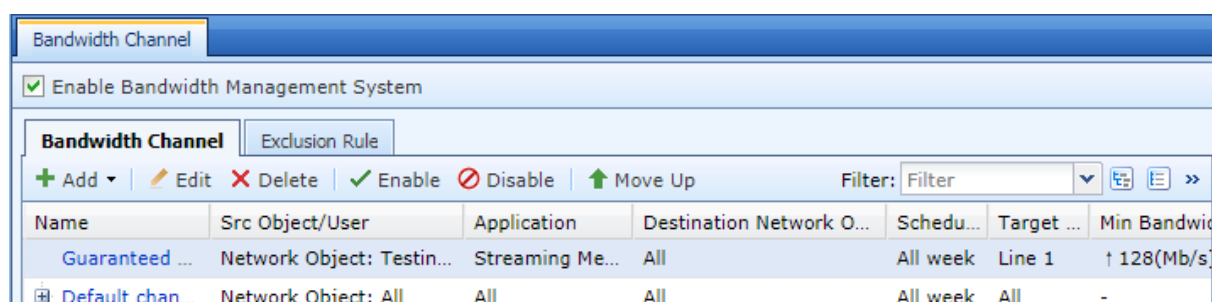


11. If you wish to have a scheduled time, you can configure through Applicable Objects > Schedule. It allows you to have one time schedule or recurring schedule. You are able to configure the time that you wish to have bandwidth control.

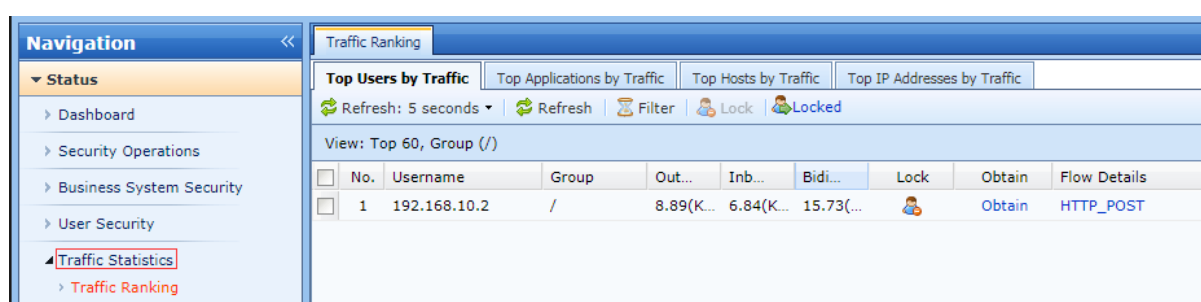




12. After successfully configured the bandwidth, it should have a added bandwidth channel as following figure.



13. In traffic ranking will show the IP that you configure in the previous step. It shows the inbound and outbound traffic flow.



Chapter 3 Precautions

1. Ensure that NGAF have Internet access and the application control should be allow.
2. LAN PC must able to access firewall and the LAN interface.
3. When testing for bandwidth management, do not use www.sangfor.com.cn download package because it has been listed in global whitelist.
4. To test for the bandwidth management. Directly download a file to test the speed and do not use 360 speed test because it will optimize the speed.
5. VPN does not support in bandwidth management.
6. The external interface is set to the WAN attribute for bandwidth management to take effect.



SANGFOR

Copyright © SANGFOR Technologies Inc. All rights reserved.

No part of this document may be reproduced or transmitted in any form or by any means without prior written consent of SANGFOR Technologies Inc.

SANGFOR is the trademark of SANGFOR Technologies Inc. All other trademarks and trade names mentioned in this document are the property of their respective holders.

Every effort has been made in the preparation of this document to ensure accuracy of the contents, but all statements, information, and recommendations in this document do not constitute a warranty of any kind, express or implied. The information in this document is subject to change without notice. To obtain the latest version, contact the international service center of SANGFOR Technologies Inc