



SANGFOR



NGAF

Standby VPN Tunnel Configuration Guide

Version 8.0.10



Change Log

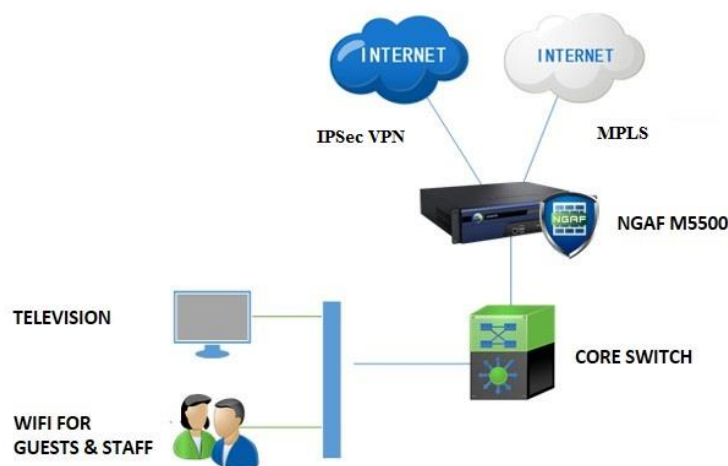
Date	Change Description
Oct 22, 2019	Standby VPN Tunnel Configuration Guide.

CONTENT

Chapter 1 Application Scenario	1
Chapter 2 Configuration Method	1

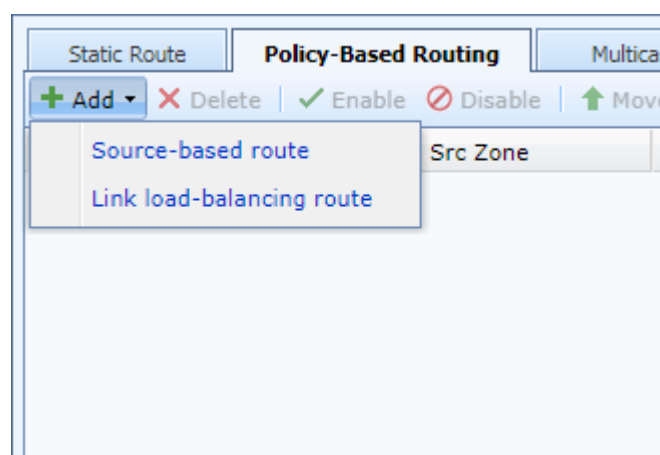
Chapter 1 Application Scenario

When there is two line that are connected to a Datacenter, line one is MPLS and a normal internet line that will build a VPN from client to the Datacenter. NGAF will perform failover in this situation when the MPLS line is failed, it will automatically switch to VPN line to connect to Datacenter.

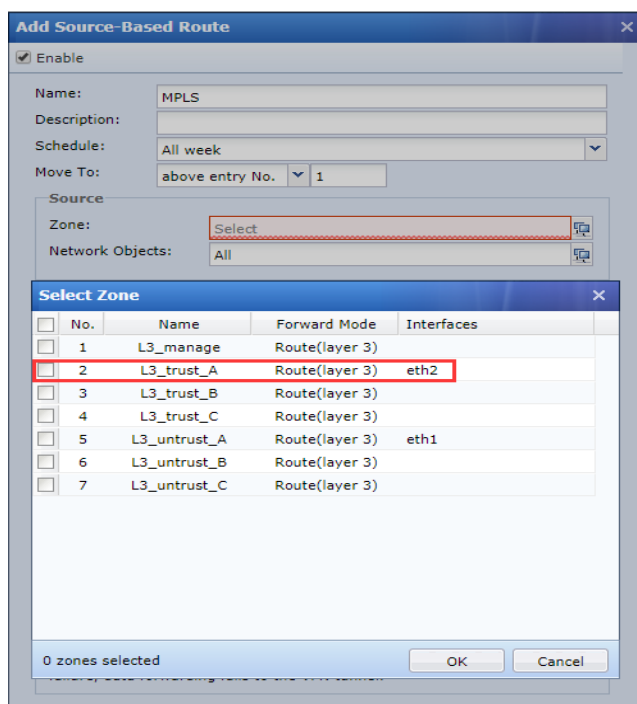


Chapter 2 Configuration Method

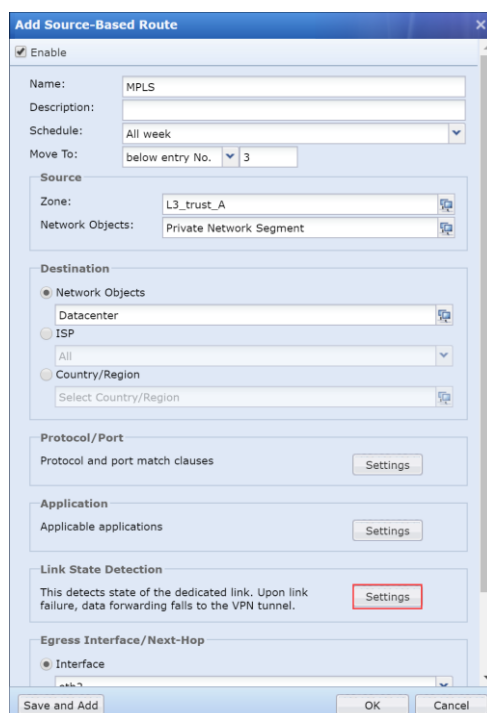
1. Go to **Network > Routing > Policy-Based Routing**, then add a Source-based route.



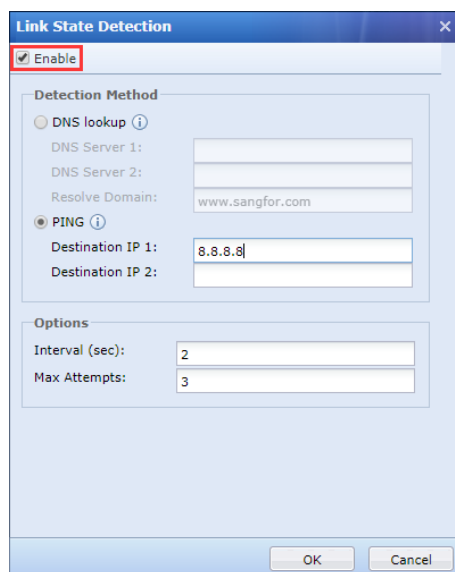
2. Then add a source zone according to the interface you have selected as LAN into the source-based route.



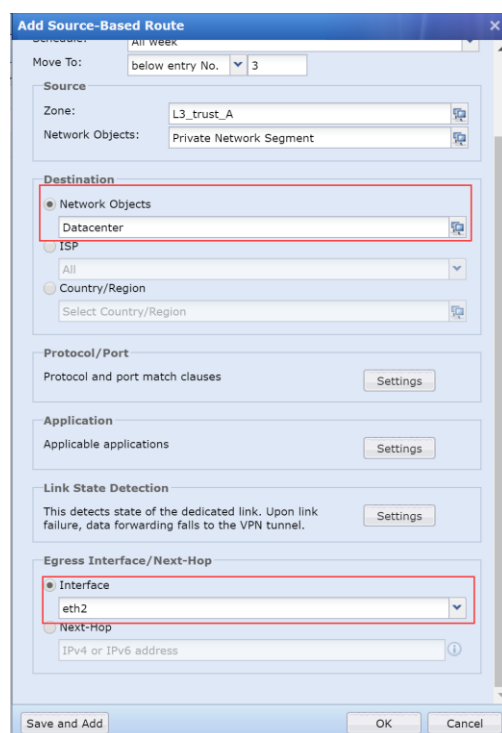
- Link state detection can be found in the same page. Then click settings.



- In the settings for link state detection, make sure the enable box is. The destination IP can be set as any IP, it is used to check whether it is still function or not.



5. For the egress interface, the interface for the MPLS will be chosen as the egress interface. Then click OK.



6. Then the policy-based routing will be as shown in the figure below.

Standby VPN Tunnel													
Routing													
Policy-Based Routing													
+ Add - Delete Enable Disable Move Up Move Down Move Refresh Import Export													
No.	Name	Src Zone	Source Network Object	Destination Network ...	Protocol	Application	Interface-Next Hop	Load Balanci...	Link State	Schedule	Stat...	Operati...	
1	MPLS	L3_trust_A	Private Network Segmei	Datacenter	All	All/All	eth2-1 10.10.10.1		Normal	All week	✓		

7. To enable VPN tunnel as a standby link, it can be find in **Network > IPSecVPN > Advanced > Standby VPN Tunnel**. Tick the Use VPN tunnel as standby link box and click OK.

☒ Use VPN tunnel as standby link

Notes:

1. Priority for different types of routing: static routing/dynamic routing(OSPF) > policy-based routing(leased line) > VPN tunnel, from high to low.
2. It falls to the VPN tunnel when policy-based route fails, to ensure normal network connection.
3. [Link State Detection](#) must be enabled for all the policy-based routing entries, to make it take effect.

OK



SANGFOR

Copyright © SANGFOR Technologies Inc. All rights reserved.

No part of this document may be reproduced or transmitted in any form or by any means without prior written consent of SANGFOR Technologies Inc.

SANGFOR is the trademark of SANGFOR Technologies Inc. All other trademarks and trade names mentioned in this document are the property of their respective holders.

Every effort has been made in the preparation of this document to ensure accuracy of the contents, but all statements, information, and recommendations in this document do not constitute a warranty of any kind, express or implied. The information in this document is subject to change without notice. To obtain the latest version, contact the international service center of SANGFOR Technologies Inc