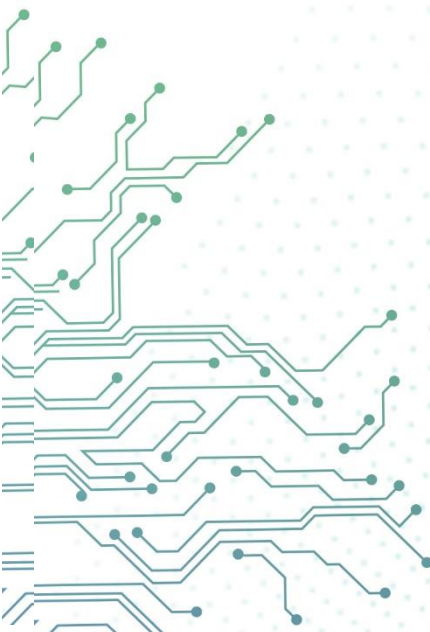




aCloud

ISCSI External Storage Configuration Guides

Version 5.8.8R1



Change Log

Date	Change Description
Oct 25, 2019	Version 5.8.8R1 document release.

CONTENT

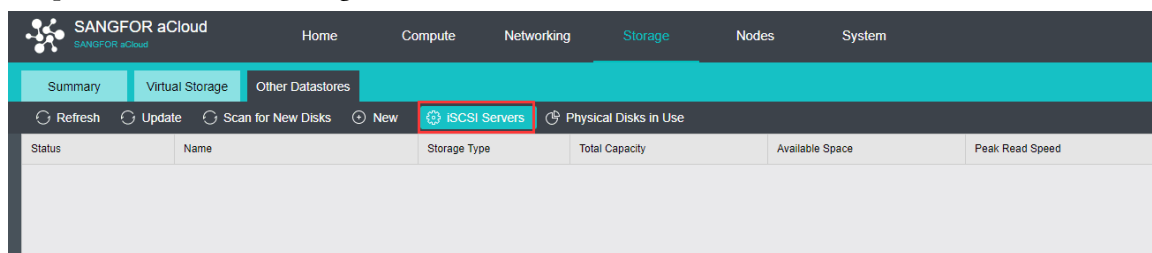
Chapter 1 Background	1
Chapter 2 Configuration guidelines.....	1
Precaution	5

Chapter 1 Background

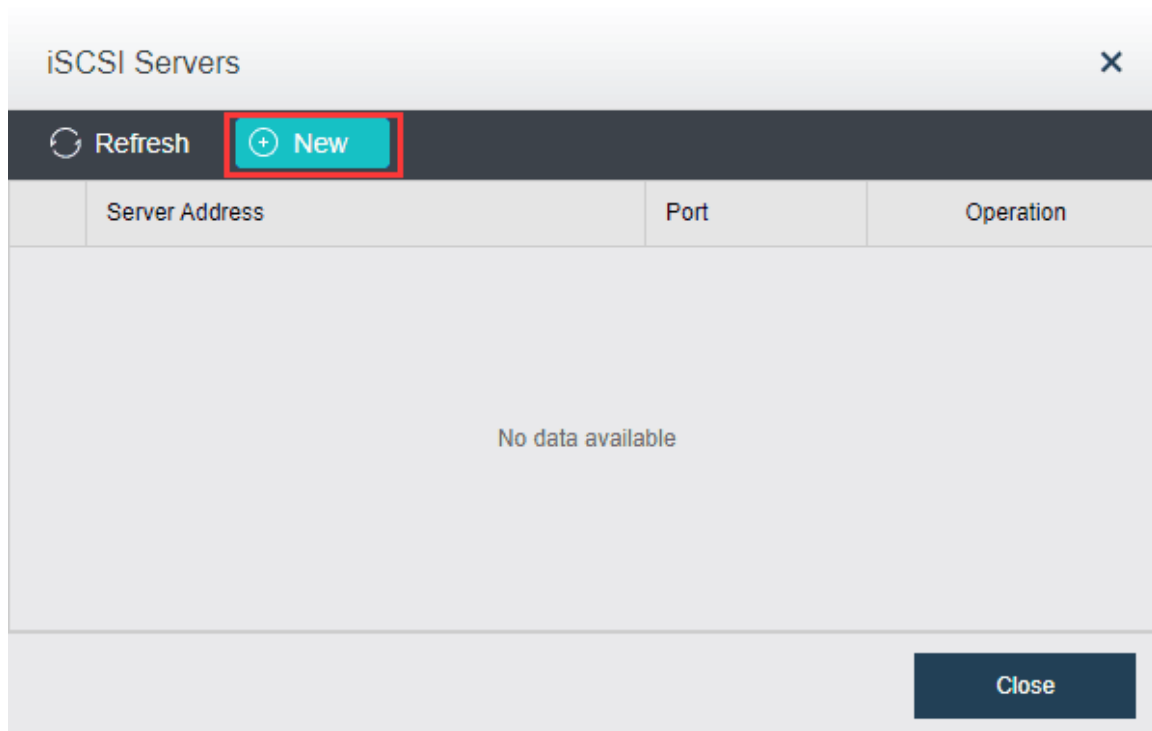
aCloud supports adding iSCSI, FC, NFS and Samba storage as external backup storage. However, virtual machine only support run in virtual storage, iSCSI and FC storage. Instead, we **do not recommend** to add iSCSI storage via VPN connection. iSCSI clients are not designed to tolerant latency or reordered fragmented packets.

Chapter 2 Configuration guidelines

1. Open in the console [Storage] > [Other Datastores], select iSCSI Server



2. Select [New]



3. Configure server's IP address, port, and associated authentication information. Click on the [Detect target] after configuration.

Add a New iSCSI Server

iSCSI Server

Server: 192.168.20.2

Port: 3260

Authentication

☒ One-way CHAP (server authenticates initiator)

Credentials for this machine to get authenticated against iSCSI server. Initiator simply needs to initiate connection.

Username:

Password:

☐ Mutual CHAP (server and initiator authenticate each other)

Credentials for iSCSI server to get authenticated against this

Detect Target **Close**

4. Select iSCSI targets and click on start to configuration the authentication setting.

Add a New iSCSI Server

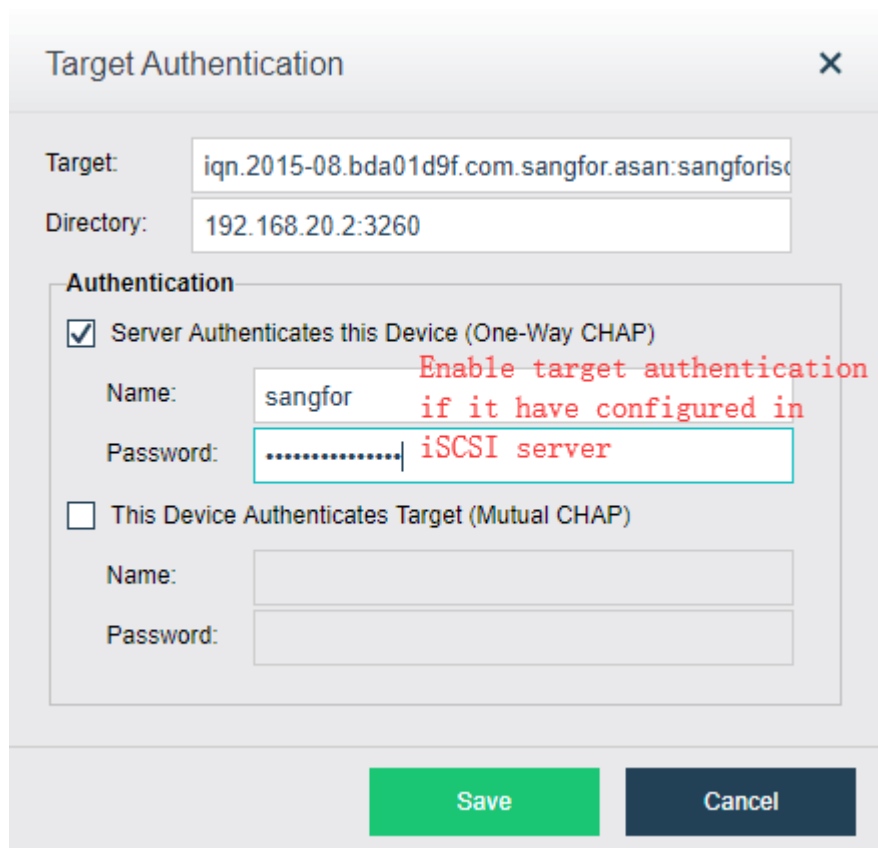
iSCSI Targets

iSCSI Target

By default, all disks from authenticated target are added onto SANGFOR aCloud.

No.	Target Name	Authentication
1	iqn.2015-08.bda01d9f.com.sangfor.asa...	Start

Detect Target **Close**

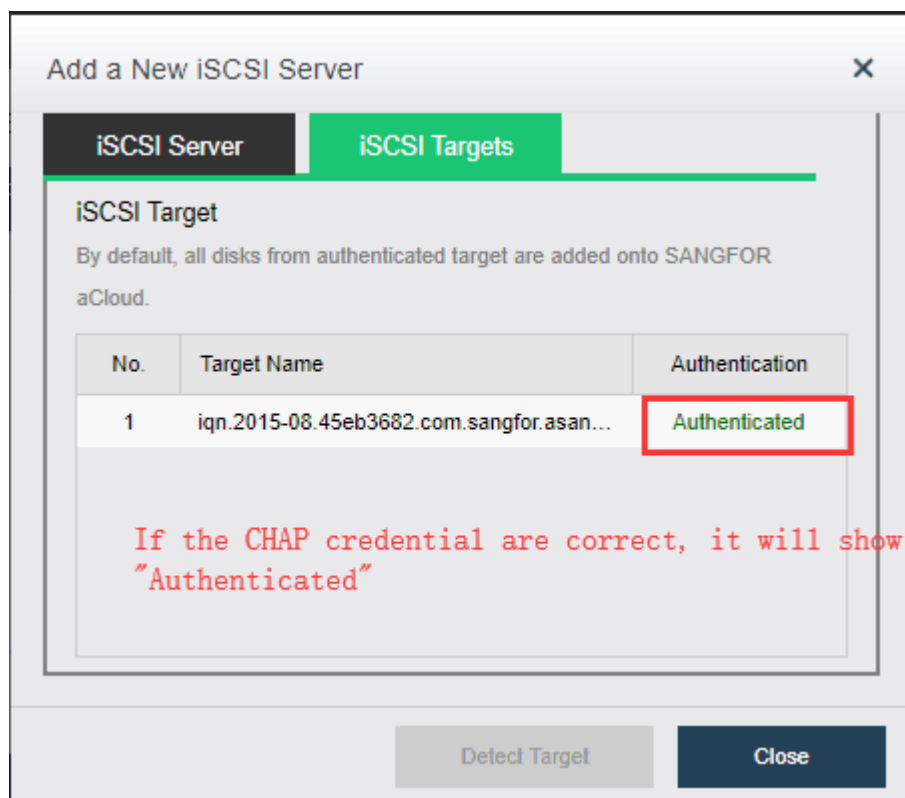


The 'Target Authentication' dialog box contains the following fields and options:

- Target:** iqn.2015-08.bda01d9f.com.sangfor.asan:sangforiscsi
- Directory:** 192.168.20.2:3260
- Authentication:**
 - ☒ **Server Authenticates this Device (One-Way CHAP)**
 - Name:** sangfor
 - Password:** iSCSI server
 - ☐ **This Device Authenticates Target (Mutual CHAP)**
 - Name:** [empty field]
 - Password:** [empty field]

Buttons: Save, Cancel

It will change the status “start” to “Authenticated” if the CHAP credential is correct, else it will stay in “Start” status.



The 'Add a New iSCSI Server' dialog box shows the 'iSCSI Targets' tab with the following information:

iSCSI Target

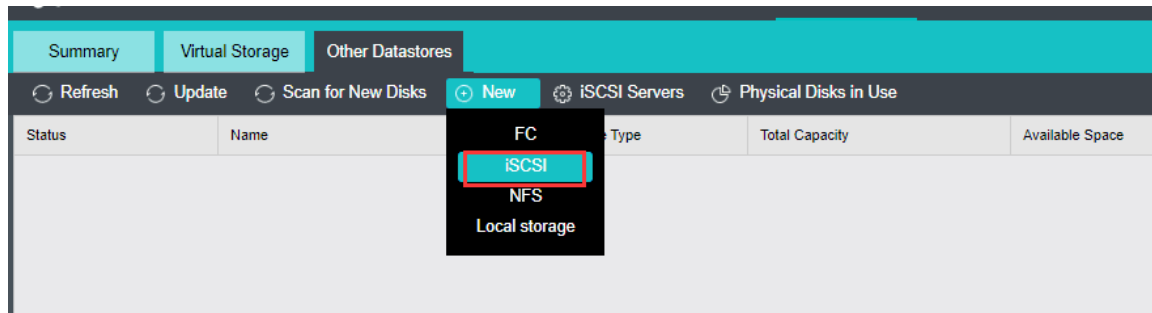
By default, all disks from authenticated target are added onto SANGFOR aCloud.

No.	Target Name	Authentication
1	iqn.2015-08.45eb3682.com.sangfor.asan...	Authenticated

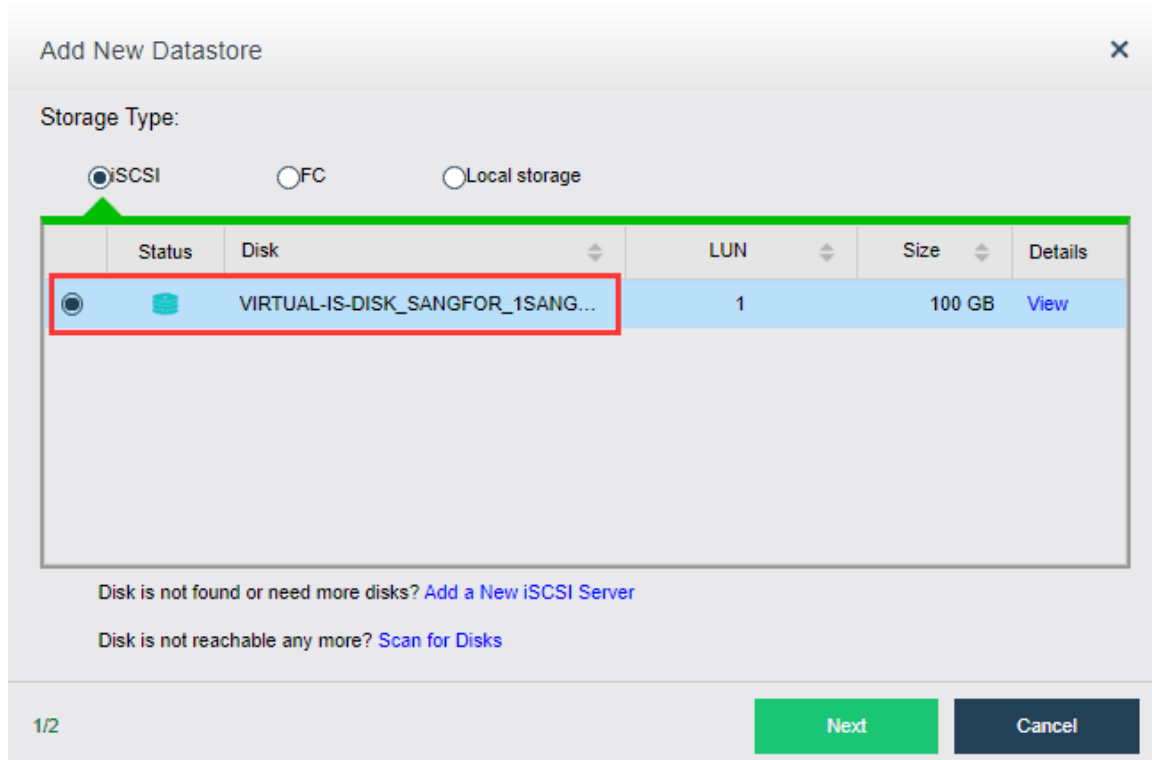
If the CHAP credential are correct, it will show “Authenticated”

Buttons: Detect Target, Close

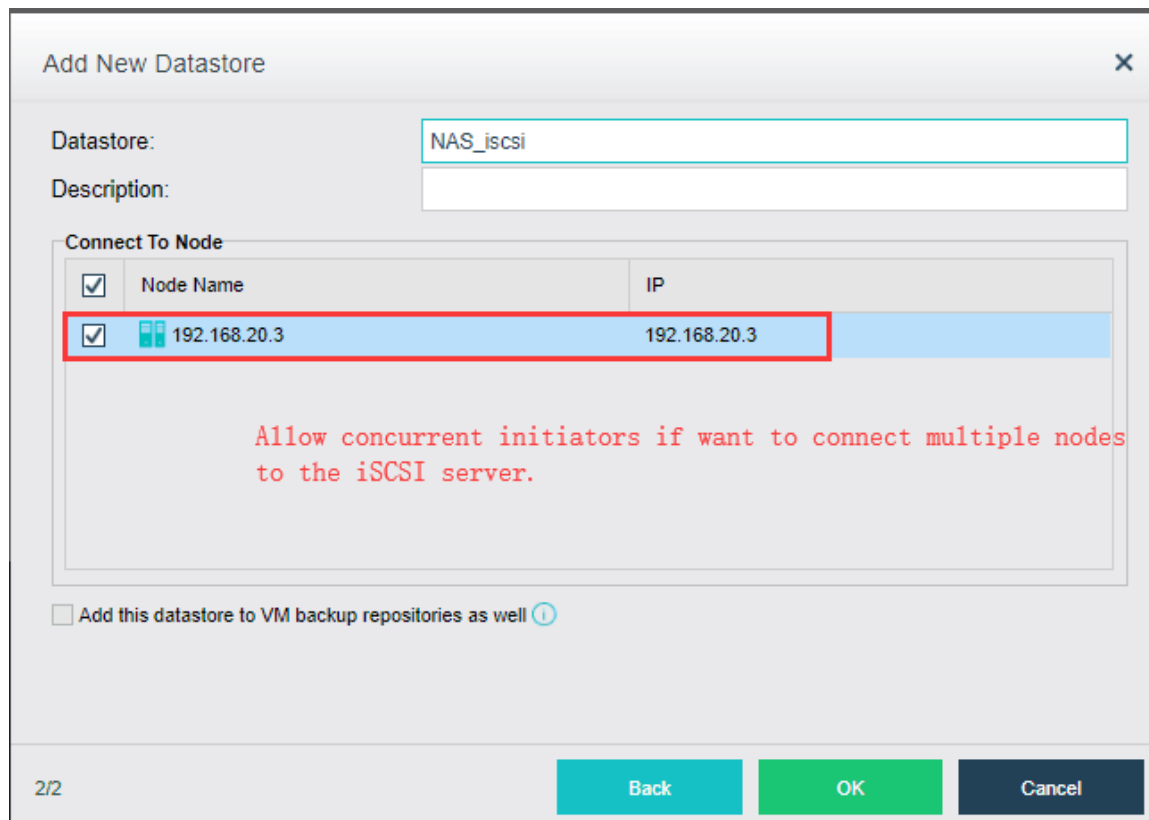
5. Click on [New] > [iSCSI]



6. Select iSCSI, select the appropriate volume to add.



6. After adding, you need to configure the accessible host as the host in all current cluster.



The "Add New Datastore" dialog box is shown. It has a title bar with a close button (X). The "Datastore:" field contains "NAS_iscsi". The "Description:" field is empty. Below is a "Connect To Node" section with a table. The table has two columns: "Node Name" and "IP". The first row is highlighted in blue and has a red border. It contains a checked checkbox, a small icon, "192.168.20.3" under "Node Name", and "192.168.20.3" under "IP". Below the table is a red text message: "Allow concurrent initiators if want to connect multiple nodes to the iSCSI server." At the bottom of the dialog is a checkbox labeled "Add this datastore to VM backup repositories as well" with an information icon (i). The bottom bar shows "2/2" and three buttons: "Back", "OK", and "Cancel".

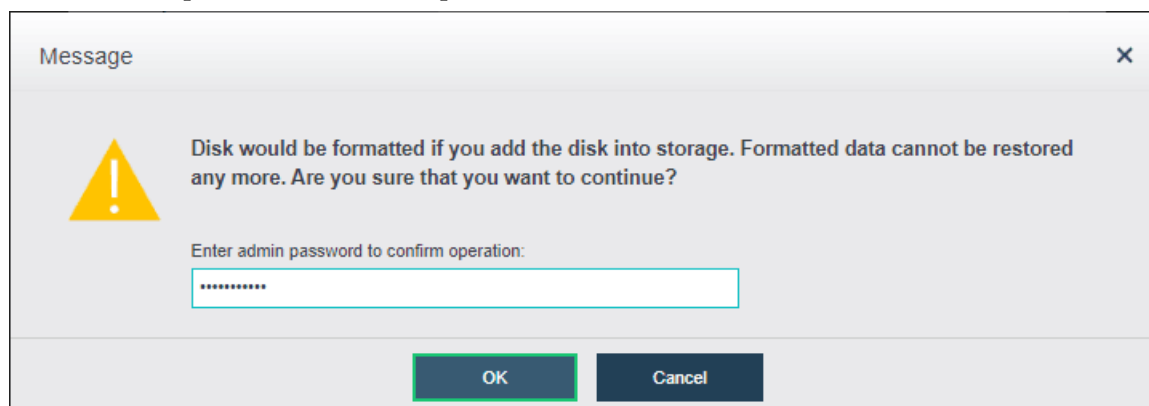
<input checked="" type="checkbox"/>	Node Name	IP
<input checked="" type="checkbox"/>	192.168.20.3	192.168.20.3

Allow concurrent initiators if want to connect multiple nodes to the iSCSI server.

☐ Add this datastore to VM backup repositories as well ⓘ

2/2 Back OK Cancel

7. Enter admin password to confirm operation.



The "Message" dialog box is shown. It has a title bar with a close button (X). On the left is a yellow warning triangle icon. The main text says: "Disk would be formatted if you add the disk into storage. Formatted data cannot be restored any more. Are you sure that you want to continue?". Below this is a label "Enter admin password to confirm operation:" followed by a password input field with masked characters (dots). At the bottom are two buttons: "OK" and "Cancel".

⚠ Disk would be formatted if you add the disk into storage. Formatted data cannot be restored any more. Are you sure that you want to continue?

Enter admin password to confirm operation:
.....

OK Cancel

Precaution

For the first time usage, Sangfor aCloud will format the iSCSI storage as "sffs" types. Hence, it is important to make sure there are no important data before added as storage in Sangfor aCloud,



Copyright © SANGFOR Technologies Inc. All rights reserved.

No part of this document may be reproduced or transmitted in any form or by any means without prior written consent of SANGFOR Technologies Inc.

SANGFOR is the trademark of SANGFOR Technologies Inc. All other trademarks and trade names mentioned in this document are the property of their respective holders.

Every effort has been made in the preparation of this document to ensure accuracy of the contents, but all statements, information, and recommendations in this document do not constitute a warranty of any kind, express or implied. The information in this document is subject to change without notice. To obtain the latest version, contact the international service center of SANGFOR Technologies Inc

