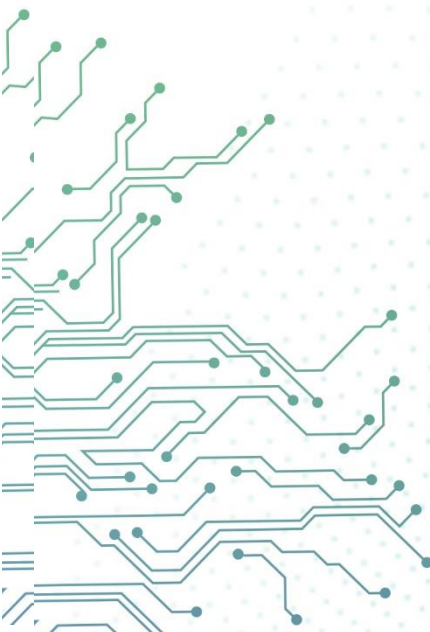




aCloud

Guida di configurazione per archiviazioni esterne ISCSI

Versione 5.8.8R1



Registro modifiche

Data	Descrizione modifica
Oct 25, 2019	Versione 5.8.8R1 rilascio del documento.

CONTENUTO

Capitolo 1 Panoramica	1
Capitolo 2 Linee guida di configurazione	1
Precauzioni	5

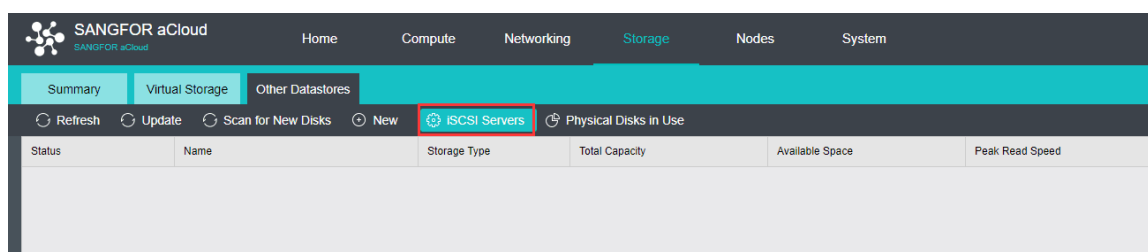
Capitolo 1 Panoramica

aCloud supporta l'aggiunta di supporti esterni di tipo iSCSI, FC, NFS e Samba per l'archiviazione di backup. Le macchine virtuali però possono essere eseguite solo da Virtual Storage, iSCSI e FC storage.

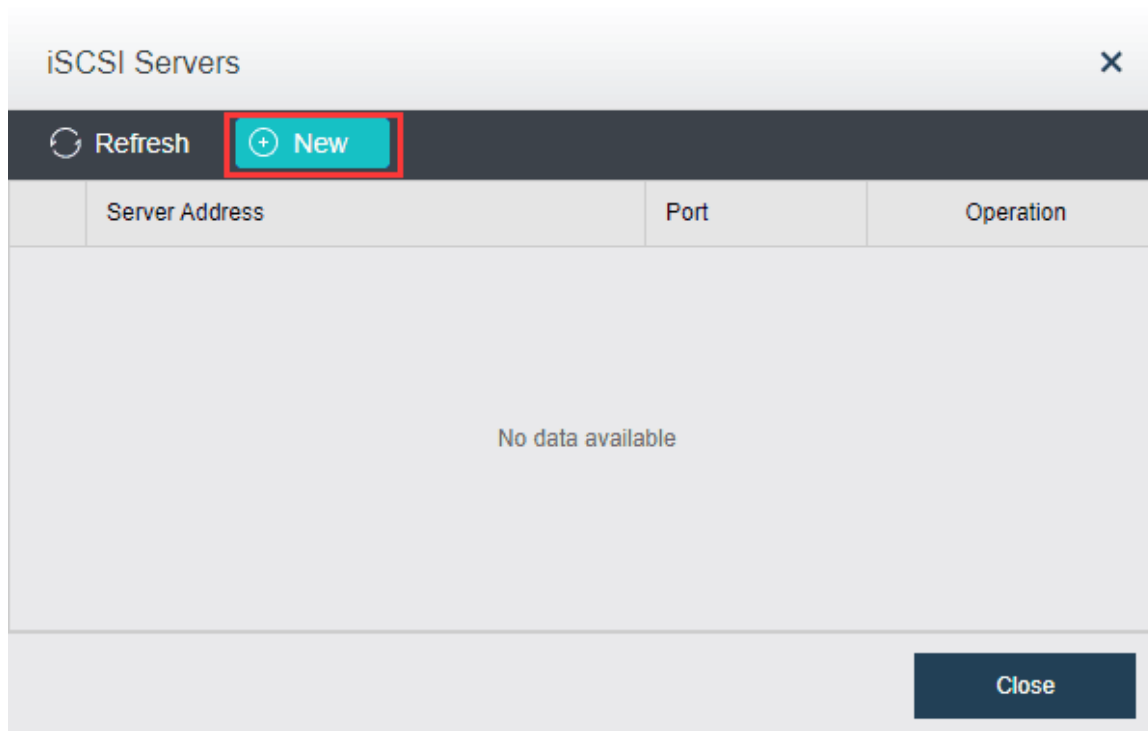
Si sconsiglia di aggiungere lo storage iSCSI essendo connessi ad una VPN, questo perché i client iSCSI non sono progettati per supportare latenze elevate o la ricostruzione di pacchetti frammentati.

Capitolo 2 Linee guida di configurazione

1. Dalla console aCloud premere [Storage] > [Other Datastores], selezionare **iSCSI Server**



2. Selezionare [New]



3. Configurare indirizzo IP, porta e le informazioni associate all'autenticazione. Premere su [Detect target] dopo aver completato la configurazione.

Add a New iSCSI Server

iSCSI Server

Server: 192.168.20.2

Port: 3260

Authentication

☒ One-way CHAP (server authenticates initiator)

Credentials for this machine to get authenticated against iSCSI server. Initiator simply needs to initiate connection.

Username:

Password:

☐ Mutual CHAP (server and initiator authenticate each other)

Credentials for iSCSI server to get authenticated against this

Detect Target **Close**

Letmoc.

4. Selezionare [iSCSI targets] e premere su [Start] per configurare le impostazioni di autenticazione.

Add a New iSCSI Server

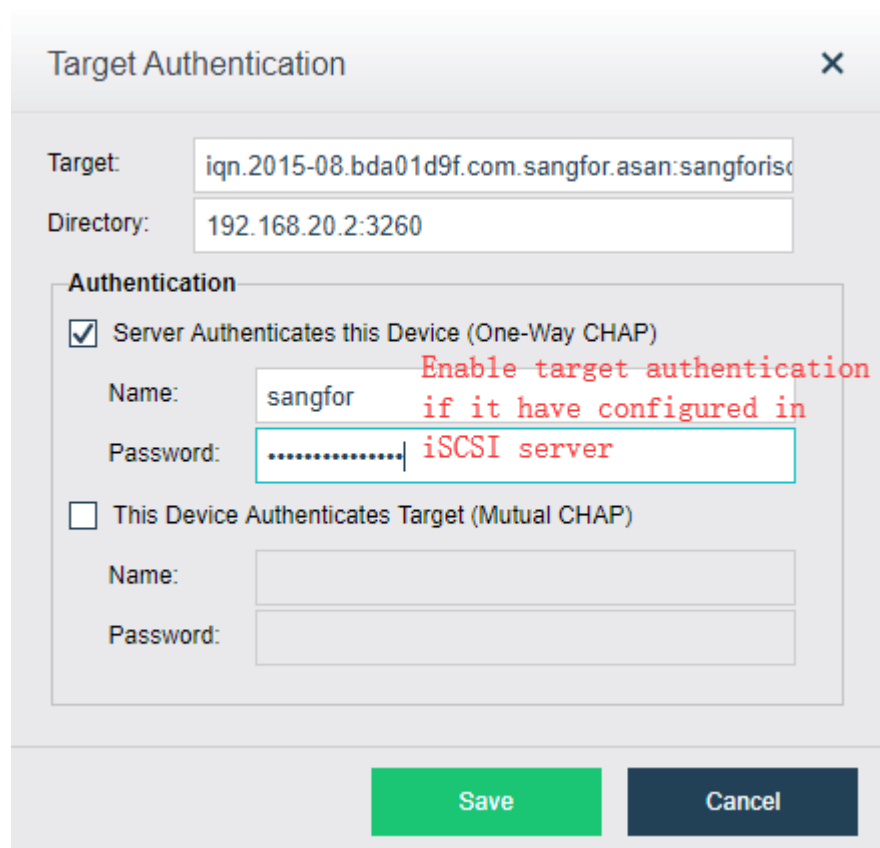
iSCSI Targets

iSCSI Target

By default, all disks from authenticated target are added onto SANGFOR aCloud.

No.	Target Name	Authentication
1	iqn.2015-08.bda01d9f.com.sangfor.asa...	Start

Detect Target **Close**



Target Authentication

Target:

Directory:

Authentication

☒ Server Authenticates this Device (One-Way CHAP)

Name:

Password: iSCSI server

☐ This Device Authenticates Target (Mutual CHAP)

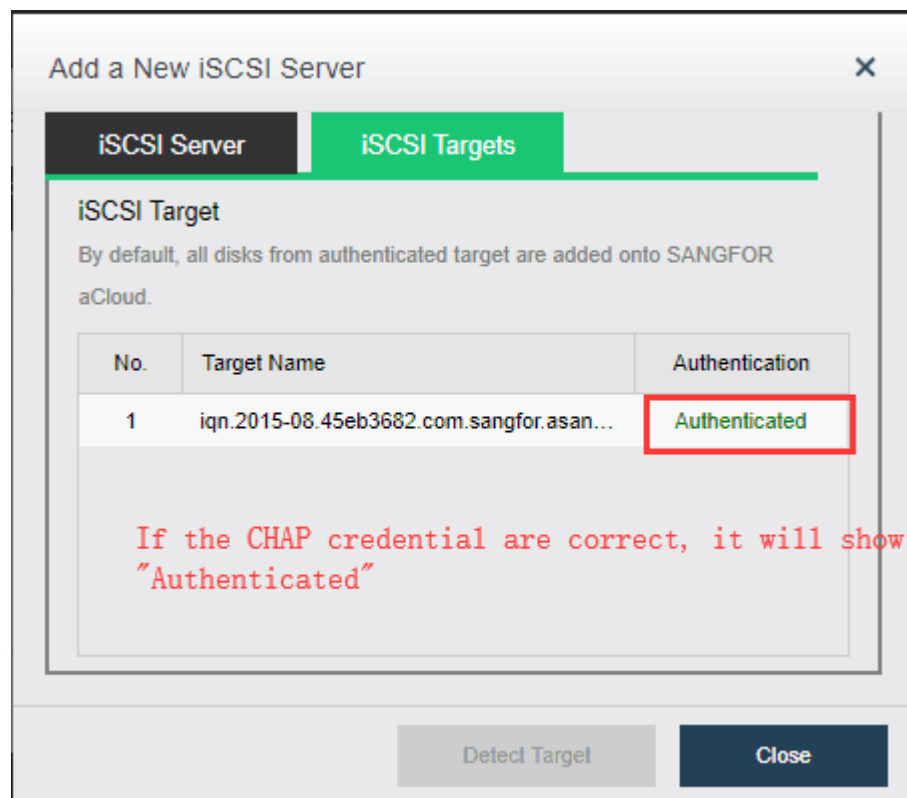
Name:

Password:

Save **Cancel**

Enable target authentication if it have configured in iSCSI server

Se le credenziali di tipo CHAP sono corrette lo stato cambierà da “Start” a “Authenticated”, altrimenti rimarrà scritto “Start”



Add a New iSCSI Server

iSCSI Server **iSCSI Targets**

iSCSI Target

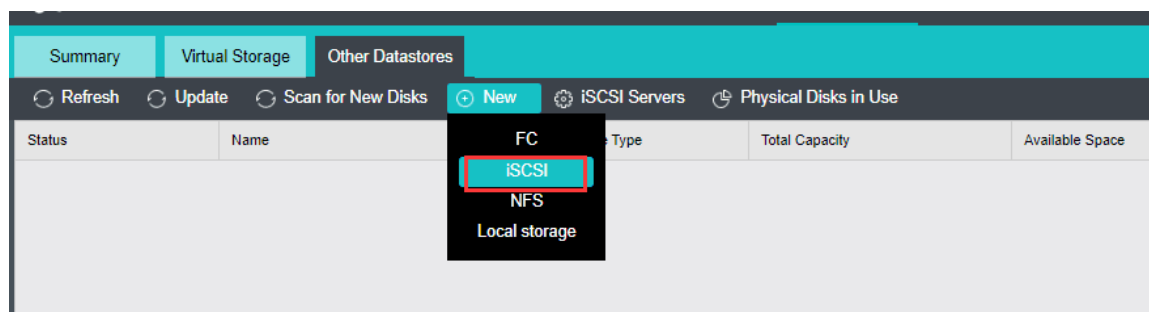
By default, all disks from authenticated target are added onto SANGFOR aCloud.

No.	Target Name	Authentication
1	iqn.2015-08.45eb3682.com.sangfor.asan...	Authenticated

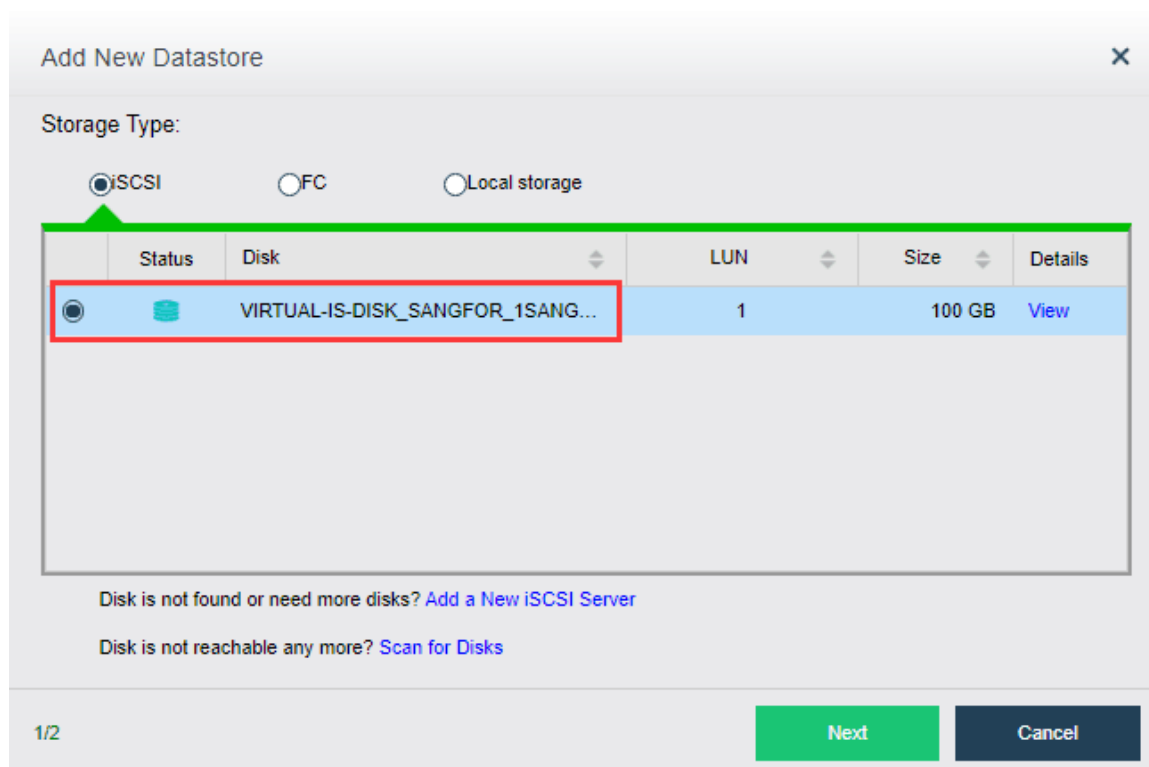
If the CHAP credential are correct, it will show “Authenticated”

Detect Target **Close**

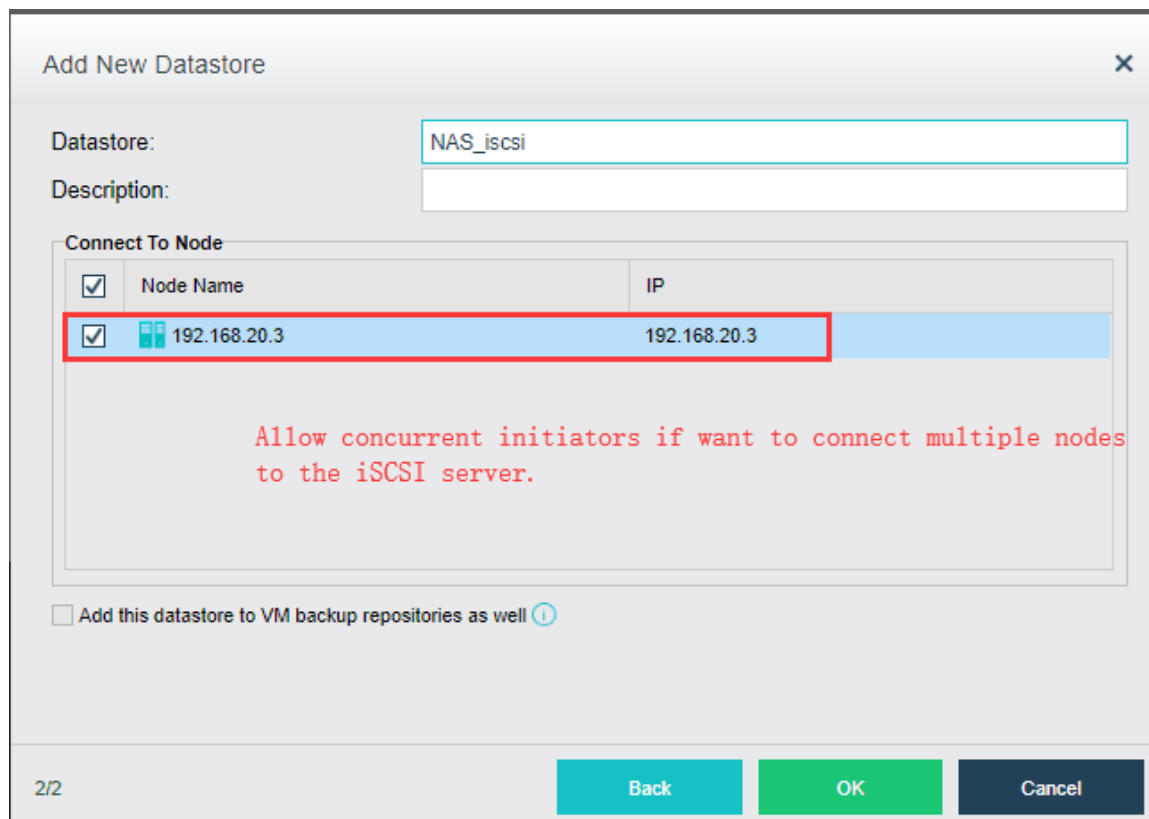
5. Premere su [New] > [iSCSI]



6. Cliccare su iSCSI e selezionare il volume da aggiungere più appropriato.



7. Dopo aver aggiunto il volume, è necessario configurarlo rendendolo accessibile come nel cluster corrente.



The "Add New Datastore" dialog box is shown. It has a title bar with a close button. The "Datastore:" field contains "NAS_iscsi". The "Description:" field is empty. Below is a "Connect To Node" section with a table. The first row is highlighted in blue and has a red border. It contains a checked checkbox, a node icon, the name "192.168.20.3", and the IP "192.168.20.3". Below the table is a red text warning: "Allow concurrent initiators if want to connect multiple nodes to the iSCSI server." At the bottom left is a checkbox "Add this datastore to VM backup repositories as well" with a help icon. At the bottom right are "Back", "OK", and "Cancel" buttons. The bottom left corner shows "2/2".

<input checked="" type="checkbox"/>	Node Name	IP
<input checked="" type="checkbox"/>	192.168.20.3	192.168.20.3

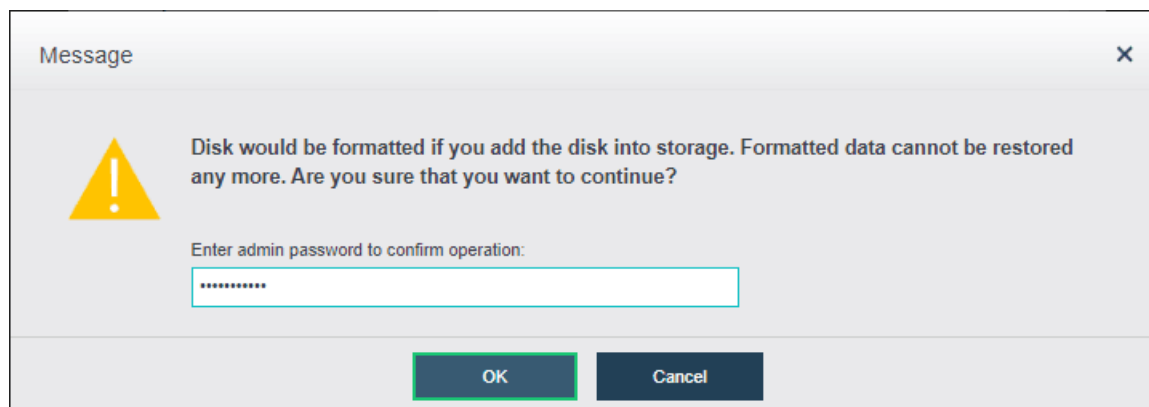
Allow concurrent initiators if want to connect multiple nodes to the iSCSI server.

☐ Add this datastore to VM backup repositories as well ⓘ

2/2

Back OK Cancel

8. Inserire la password dell'utente admin per confermare l'operazione.



The "Message" dialog box is shown. It has a title bar with a close button. On the left is a yellow warning triangle icon. The text reads: "Disk would be formatted if you add the disk into storage. Formatted data cannot be restored any more. Are you sure that you want to continue?". Below is a label "Enter admin password to confirm operation:" and a password input field with masked characters. At the bottom are "OK" and "Cancel" buttons.

Message

⚠ Disk would be formatted if you add the disk into storage. Formatted data cannot be restored any more. Are you sure that you want to continue?

Enter admin password to confirm operation:

OK Cancel

Precauzioni

Per il primo utilizzo, Sangfor aCloud formatterà l'archivio iSCSI come tipo "sffs". Prima di aggiungerlo su Sangfor aCloud bisogna quindi essere sicuri che non ci siano dati importanti sull'archivio stesso.



Copyright © SANGFOR Technologies Inc. All rights reserved.

No part of this document may be reproduced or transmitted in any form or by any means without prior written consent of SANGFOR Technologies Inc.

SANGFOR is the trademark of SANGFOR Technologies Inc. All other trademarks and trade names mentioned in this document are the property of their respective holders.

Every effort has been made in the preparation of this document to ensure accuracy of the contents, but all statements, information, and recommendations in this document do not constitute a warranty of any kind, express or implied. The information in this document is subject to change without notice. To obtain the latest version, contact the international service center of SANGFOR Technologies Inc

