



IAM

POP3 SSO Configuration Guide

Version 12.0.18



Change Log

Date	Change Description
Aug 16, 2019	Version 12.0.18 document release.

CONTENT

Chapter 1 Content requirement.....	1
1. 1 Application scenerion	1
1. 2 Requirement	1
Chapter 2 Configuration and snapshot	1
2. 1 Deployment mode	1
2.1.1 Route mode	1
2. 1. 2 Bridge mode.....	2
2. 1. 3 Bypass mode	2
2. 2 Configure authentication policy.....	3
2. 3 Mail Server Configuration	4
2. 4 POP3 SSO Configuration.....	5
Chapter 3 Precaution.....	5

Chapter 1 Content requirement

1.1 Application scenerion

The customer intranet has a mail server. He hopes to implement the login email. After sending and receiving emails, he will pass the IAM authentication and use the email name as the username as online user.

1.2 Requirement

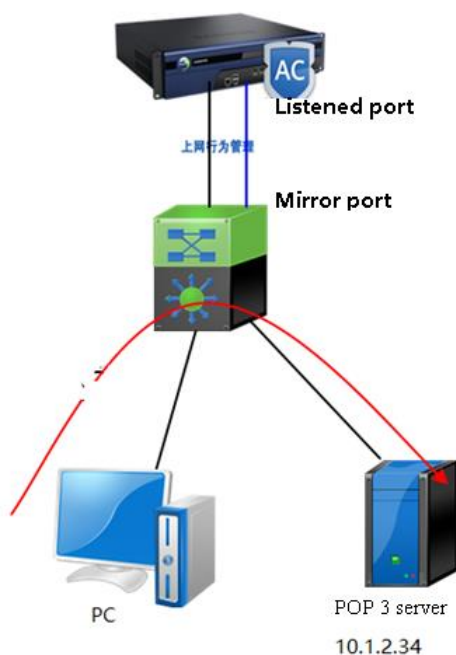
1. One IAM 12.0.26 is deployed in the network, and routes, bridges, and bypasses are all available.
2. basic SMTP / POP3 mail server
3. The data from the intranet to the mail server needs to pass through the IAM device (if it is not mirrored to the device)

Chapter 2 Configuration and snapshot

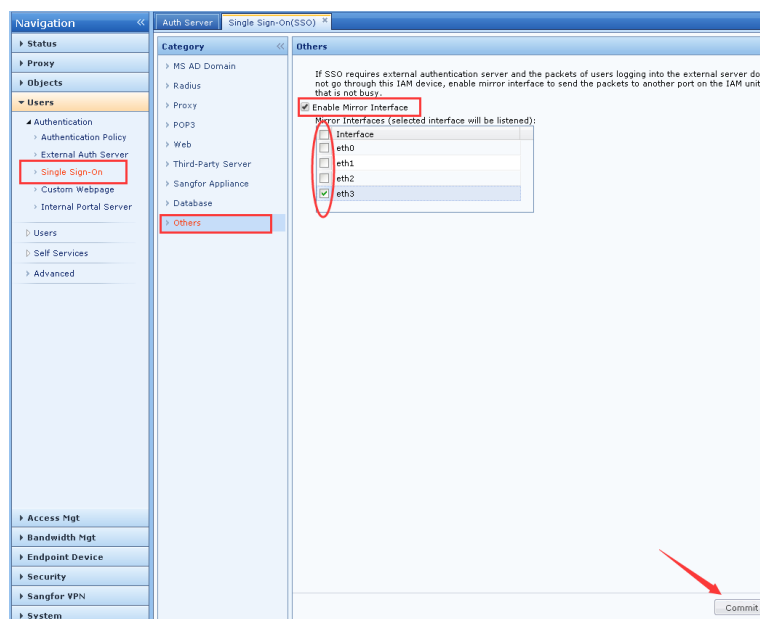
2.1 Deployment mode

2.1.1 Route mode

The email login information does not pass through IAM, IAM acts as a routing gateway, and the email login data does not pass through IAM. At this time, IAM needs to set the mirror port and pop3 single sign-on configuration, and mirror the data of the mailbox login to the IAM mirror port.



On the AC, choose to enable the mirrored network port and check the network port of the mirrored data.

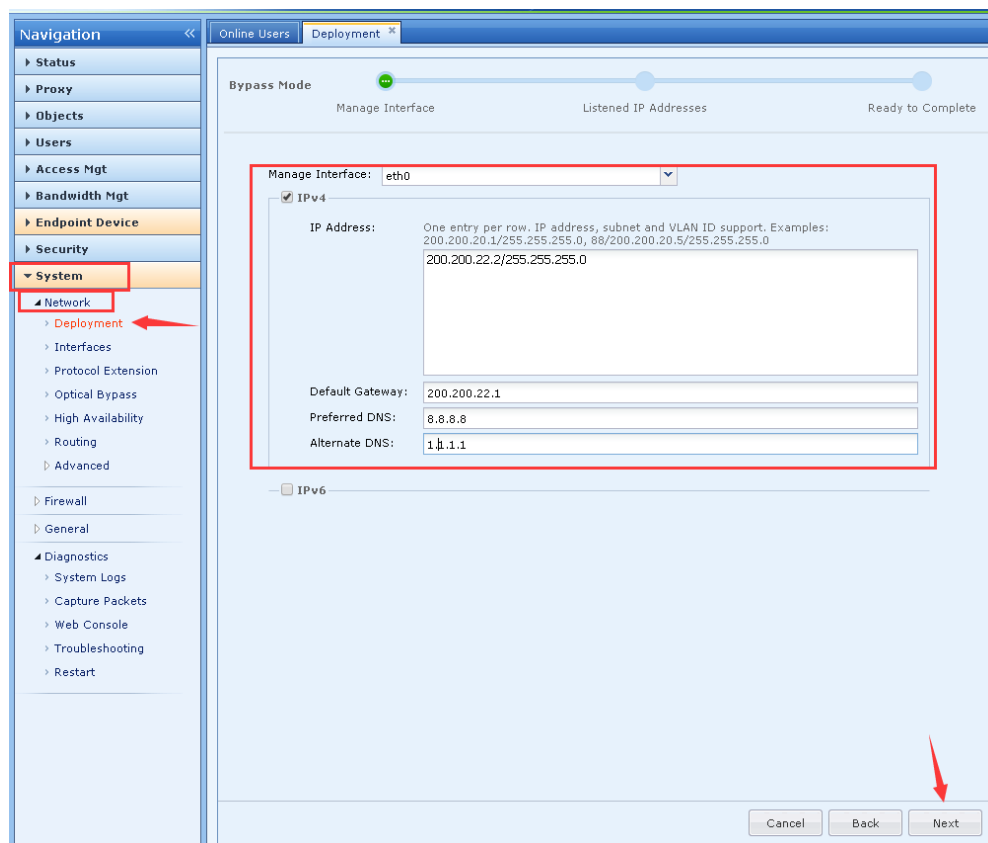


2.1.2 Bridge mode

The data of the e-mail login is transmitted to the AC. The device is transparently deployed. Ensure that the data passes through the AC. If the AC does not pass through the AC, the mirroring is required to be mirrored to the corresponding network port.

2.1.3 Bypass mode

[Status]—[Network]—[Deployment] Configure the deployment mode of the device to be bypass mode, set the mirror port, manage ip, and ensure that the data from the intranet to the mail server can reach the IAM device.



Online Users Deployment

Bypass Mode ☒ Manage Interface ☐ Listened IP Addresses ☐ Ready to Complete

Mirror Port:

Listened and Excluded IP Addresses

IP Addresses: One IP address or range per row;
Listened subnet examples: 200.200.20.0/255.255.255.0, 2001:4008::/64
Excluded IP address or range begins with hyphen. Excluded IP range examples:
-200.200.20.14-200.200.20.148, -2001:4008::1-2001:4008::ffff; Excluded IP address
examples: -200.200.20.58, -2001:4008::1

Listened Servers

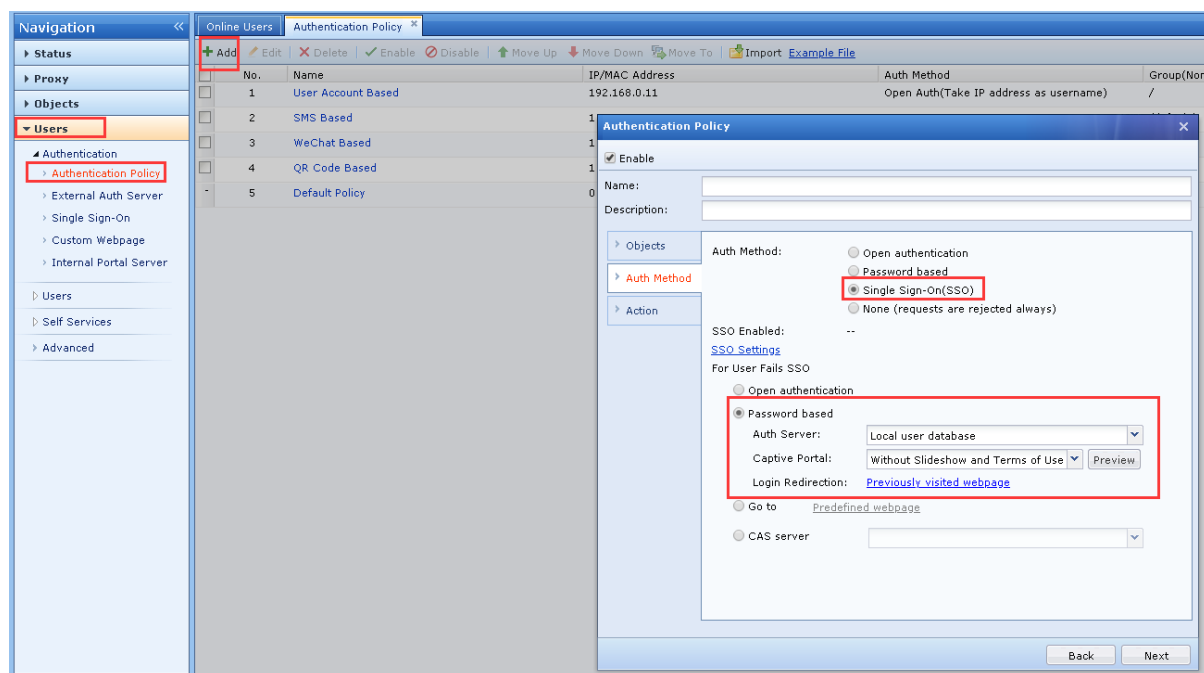
Servers: Monitor and audit access to the following servers by any user(from internal or external network).
Examples: IP range, 200.200.20.14-200.200.20.148 and 2001:4008::1-2001:4008::ffff,
IP address, 200.200.20.58 and 2001:4008::1

Examples: 200.200.20.14-200.200.20.148
2001:4008::1-2001:4008::ffff
200.200.20.58
2001:4008::1

Cancel Back Next

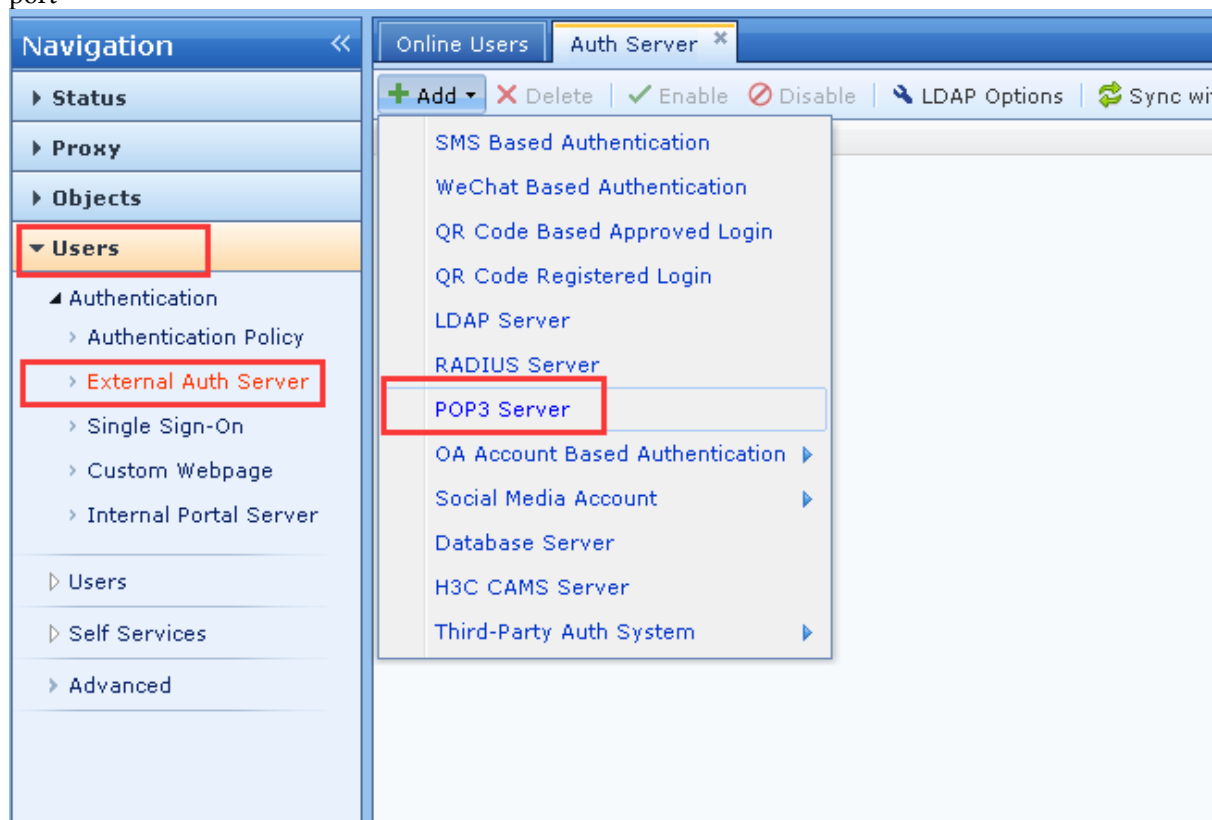
2.2 Configure authentication policy

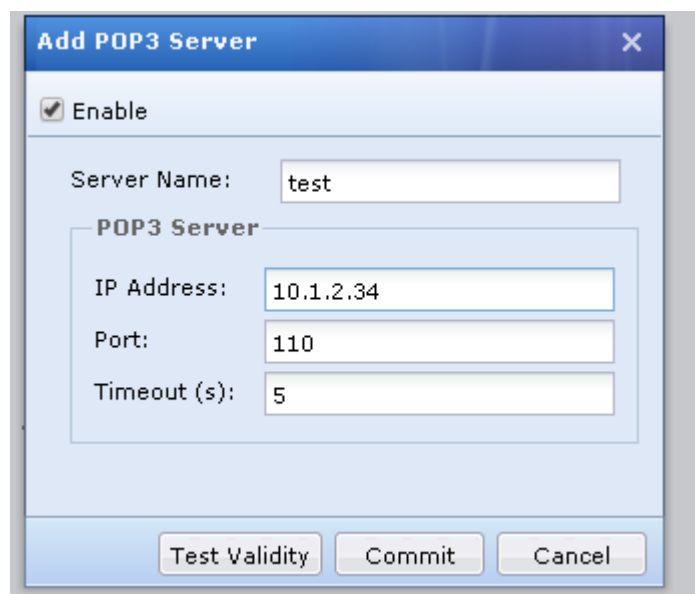
[User] - [Authentication policy] Configure the authentication policy of the intranet as single sign-on, and then select [Password based] after single sign-on fails. **【Action】** Add user account to local user database



2.3 Mail Server Configuration

[Authentication] - [External Auth Server] - [pop3] fill in the mail server's ip address and authentication port



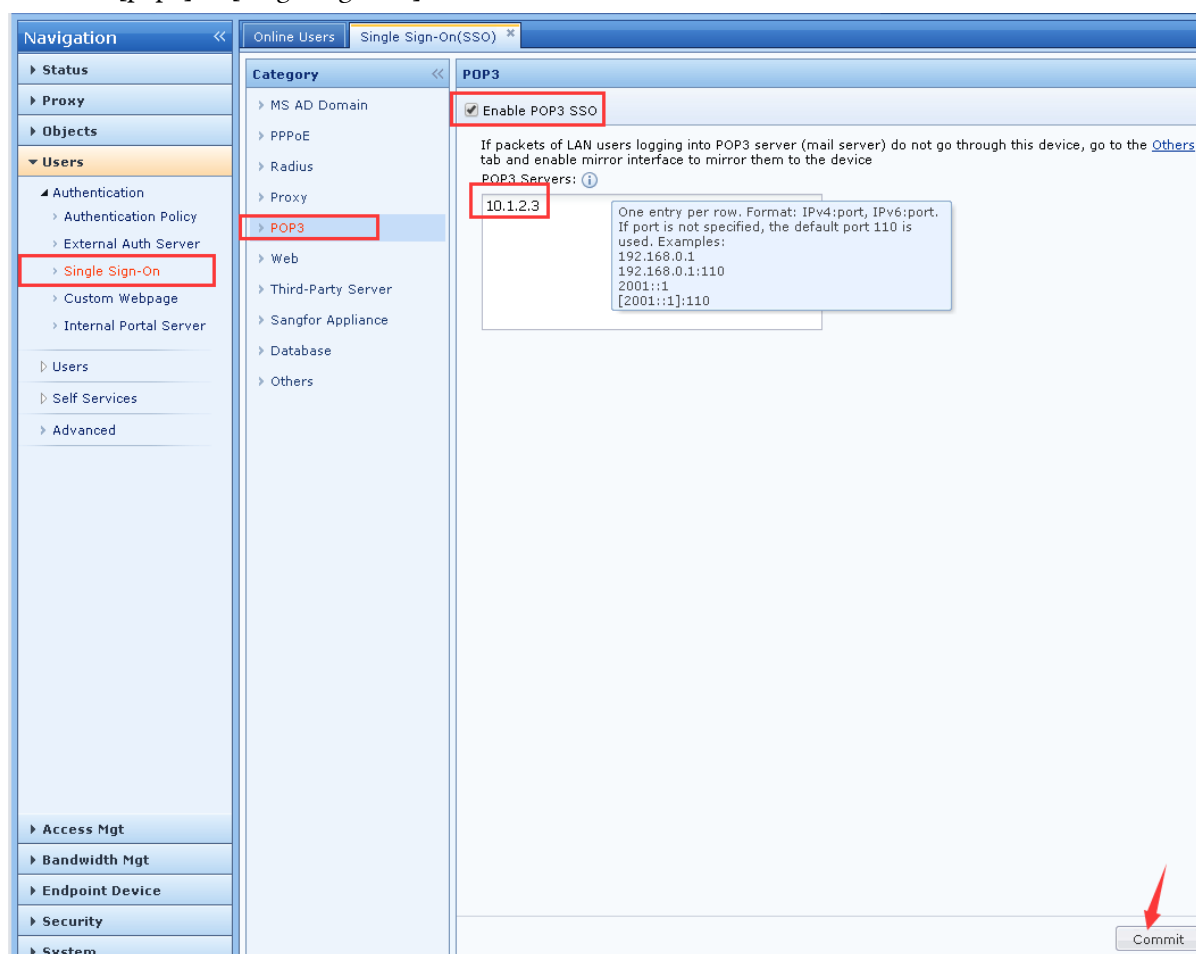


The 'Add POP3 Server' dialog box contains the following fields and controls:

- Enable:** A checked checkbox.
- Server Name:** A text field containing 'test'.
- POP3 Server:** A container for the following fields:
 - IP Address:** A text field containing '10.1.2.34'.
 - Port:** A text field containing '110'.
 - Timeout (s):** A text field containing '5'.
- Buttons:** 'Test Validity', 'Commit', and 'Cancel' at the bottom.

2. 4 POP3 SSO Configuration

Select [pop3] in [Single Sign-On]



The 'Single Sign-On (SSO)' configuration page shows the following structure:

- Navigation:** A sidebar on the left with categories like Status, Proxy, Objects, Users, Access Mgt, Bandwidth Mgt, Endpoint Device, Security, and System. The 'Users' category is expanded, and 'Single Sign-On' is selected.
- Category:** A list of categories including MS AD Domain, PPPoE, Radius, Proxy, POP3, Web, Third-Party Server, Sangfor Appliance, Database, and Others. 'POP3' is selected and highlighted with a red box.
- POP3 Configuration:**
 - Enable POP3 SSO:** A checked checkbox, highlighted with a red box.
 - Instruction:** 'If packets of LAN users logging into POP3 server (mail server) do not go through this device, go to the [Others](#) tab and enable mirror interface to mirror them to the device'.
 - POP3 Servers:** A table with one entry: '10.1.2.3' (highlighted with a red box). A tooltip explains the format: 'One entry per row. Format: IPv4:port, IPv6:port. If port is not specified, the default port 110 is used. Examples: 192.168.0.1, 192.168.0.1:110, 2001::1, [2001::1]:110'.
 - Commit:** A button at the bottom right, indicated by a red arrow.

Chapter 3 Precaution

1. The mail server only supports the POP3 protocol. Other mail protocols do not support it.
2. Ensure that the data passes through the IAM device. If not, mirror the data to get the IAM device.



SANGFOR

Copyright © SANGFOR Technologies Inc. All rights reserved.

No part of this document may be reproduced or transmitted in any form or by any means without prior written consent of SANGFOR Technologies Inc.

SANGFOR is the trademark of SANGFOR Technologies Inc. All other trademarks and trade names mentioned in this document are the property of their respective holders.

Every effort has been made in the preparation of this document to ensure accuracy of the contents, but all statements, information, and recommendations in this document do not constitute a warranty of any kind, express or implied. The information in this document is subject to change without notice. To obtain the latest version, contact the international service center of SANGFOR Technologies Inc