



# Sangfor IAG

## Sangfor Appliance for IAG and NGAF Conguration Guide

<b>Product Version</b>	13.0.18
<b>Document Version</b>	01
<b>Released on</b>	Sep. 15, 2021



Copyright © Sangfor Technologies Inc. 2021. All rights reserved.

Unless otherwise stated or authorized, Sangfor Technologies Inc. (hereinafter referred to as "Sangfor") and its affiliates reserve all intellectual property rights, including but not limited to copyrights, trademarks, patents, and trade secrets, and related rights to text, images, pictures, photographs, audio, videos, charts, colors, and layouts as presented in or concerning this document and content therein. Without prior written consent of Sangfor, this document and content therein must not be reproduced, forwarded, adapted, modified or displayed or distributed by any other means for any purpose.

## **Disclaimer**

Products, services or features described in this document, whether wholly or in part, may be not within your purchase scope or usage scope. The products, services or features you purchase must be subject to the commercial contract and terms as agreed by you and Sangfor. Unless otherwise provided in the contract, Sangfor disclaims warranties of any kind, either express or implied, for the content of this document.

Due to product version upgrades or other reasons, the content of this document will be updated from time to time. Unless otherwise agreed, this document is used for reference only, and all statements, information, and recommendations therein do not constitute any express or implied warranties.

## Technical Support






For technical support, please visit: <https://www.sangfor.com/en/about-us/contact-us/technical-support>

Send information about errors or any product related problem to [tech.support@sangfor.com](mailto:tech.support@sangfor.com).

## About This Document

This document describes the configuration guide of Sangfor Appliance in Sangfor IAG and NGAF.

## Note Icons

English Icon	Description
	Indicates an imminently hazardous situation which, if not avoided, will result in death or serious injury.
	Indicates a potentially hazardous situation which, if not avoided, could result in death or serious injury.
	Indicates a hazardous situation, which if not avoided, could result in minor or moderate injury.
	Indicates a hazardous situation, which if not avoided, could result in settings failing to take effect, equipment damage, or data loss. NOTICE addresses practices not related to personal injury.
	Calls attention to important information, best practices, and tips. NOTE addresses information not related to personal injury or equipment damage.

## Change Log

Date	Change Description
Sep.15, 2021	This is the first release of this document.

## Contents

Technical Support .....	1
Change Log .....	2
1 Function Introduction .....	4
2 Configuration .....	4
2.1 IAM Application Scanario .....	4
3 Description of necessary conditions.....	4
4 Configuration Guide .....	5
5 Configuration and screenshot .....	5
5.1 IAG Configuration .....	5
5.2 NGAF configure the Sangfor Appliance SSO .....	7
6 Precaution.....	8

# 1 Function Introduction

The authentication and forwarding function between Sangfor devices is mainly suitable for customers with multiple Sangfor devices in the network environment. Users can view online users in both Sangfor devices. To facilitate unified management, Sangfor's able to share the user authentication information between devices.

## 2 Configuration

Sangfor Appliance supports local password authentication, external password authentication, mobile phone SMS verification, single sign-on, Dkey authentication information. Other than the above method will not be forwarded to other Sangfor Device.

### 2.1 IAM Application Scenario

The authentication and forwarding function between Sangfor devices is mainly suitable for customers with multiple Sangfor devices in the network environment so that other Sangfor devices can see online users.

Only two devices can be done the Sangfor Appliance configuration, which is IAG and NGAF. IAG can forward and receive the authentication from any Sangfor device, but NGAF only receives the forward from others.

## 3 Description of necessary conditions

1. The user's network has IAG and NGAF devices.
2. It is required to ensure the two device's network connectivity is normal and the default port is 1773 (NGAF 7.1 and above support 1775 port).
3. IAG can send and receive the forwarded authentication message, but NGAF only can receive the forwarded authentication message from other devices.
4. Local password authentication, external password authentication, mobile SMS verification, single sign-on, Dkey authentication information can be forwarded.

## 4 Configuration Guide

This document will use the IAG and NGAF as an example, which means all authentication done in IAG and NGAF will show the user in the online user list.

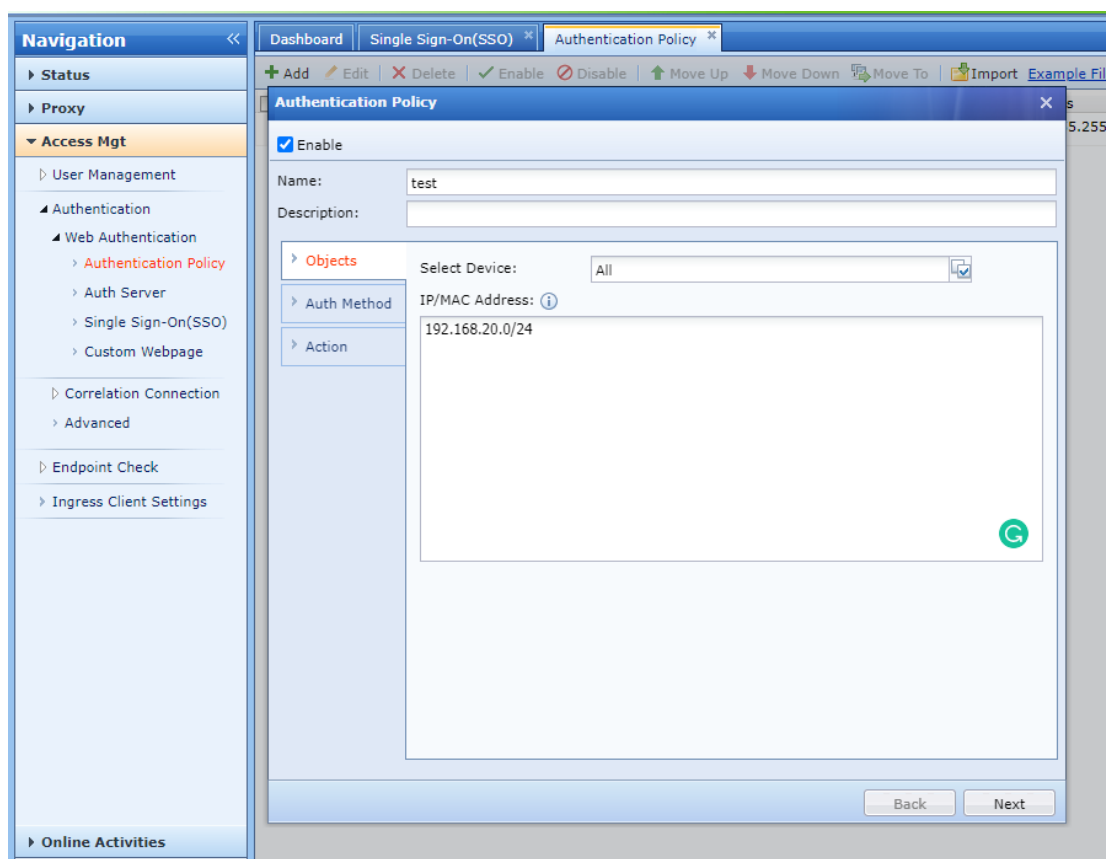
The IAG uses the local password as an example to configure the authentication to go online, and the NGAF receives the forwarding information from the AC. NGAF will show the user online as a Single Sign-on and make a corresponding access control policy for users on NGAF and IAG to achieve the unified management of multiple device users.

## 5 Configuration and screenshot

We will have the 192.168.20.0/24 network segment and IAM deploy as bridge and NGAF as the Internet gateway in this example.

### 5.1 IAG Configuration

**Step 1.** Configure the IP range which needs to be done for the authentication.



**Step 2.** Select the password-based authentication policy.

The screenshot shows the 'Authentication Policy' configuration page in the Sangfor Appliance web interface. The left sidebar contains a 'Navigation' menu with options like Status, Proxy, Access Mgt, User Management, Authentication, Web Authentication, Auth Server, Single Sign-On(SSO), Custom Webpage, Correlation Connection, Advanced, Endpoint Check, and Ingress Client Settings. The main content area is titled 'Authentication Policy' and includes a 'Name' field set to 'test' and a 'Description' field. Under the 'Auth Method' section, 'Password based' is selected with a radio button. Other options include 'Open authentication', 'Single Sign-On(SSO)', and 'None (requests are rejected always)'. The 'External Auth Server' is set to 'Local user database'. There are checkboxes for 'Self registration', 'Account login with WeChat', and 'Account login with SMS code'. The 'Captive Portal' section shows 'Captive Portal' set to 'Without Slideshow and Terms of Use' and 'Login Redirection' set to 'Previously visited webpage'. At the bottom, there are 'Back' and 'Next' buttons.

**Step 3.** IAG configure the Sangfor Appliance feature

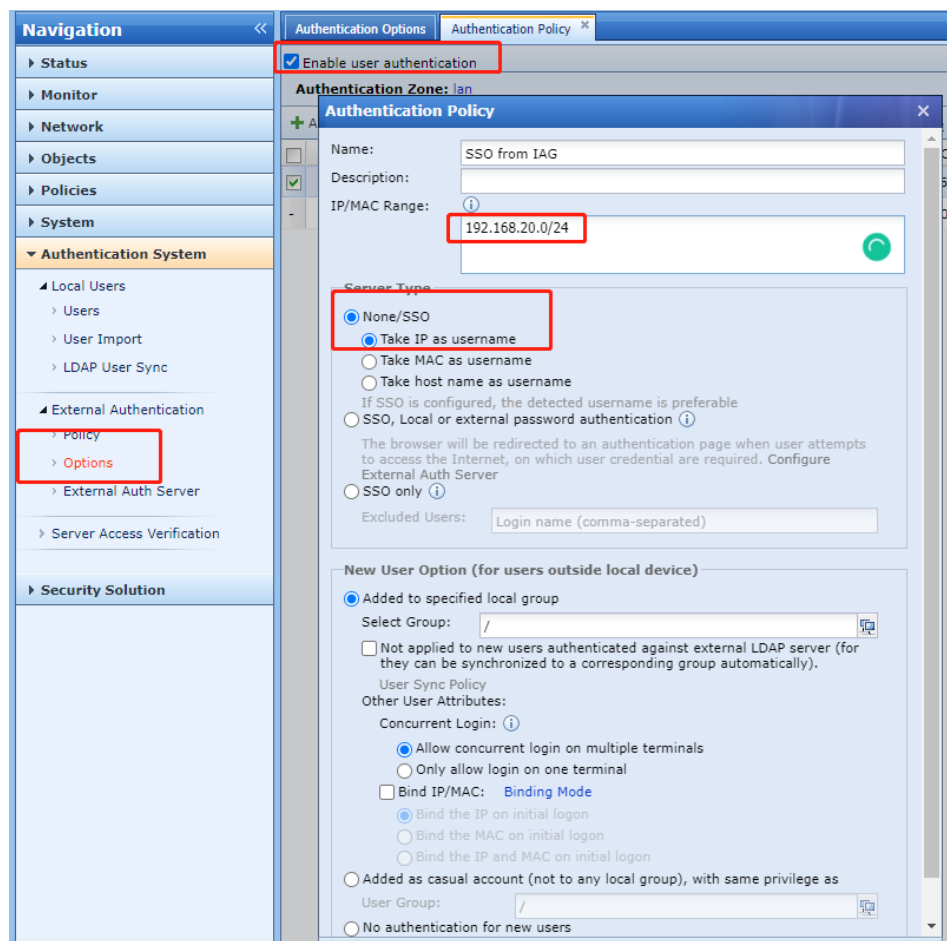
192.168.20.0/24 is the IP range, and the 192.168.20.1:1775 is the NGAF Lan port. It means all users from 192.168.20.0/24 authentication will send to 192.168.20.1's 1775 port. It is suggested to use the 1775 port if the NGAF is 7.1 and above. The shared key must be the same as the NGAF's shared key later.

The screenshot shows the 'Sangfor Appliance' configuration page in the Sangfor Appliance web interface. The left sidebar is the same as in Step 2. The main content area is titled 'Sangfor Appliance' and includes a 'Category' list on the left with options like MS AD Domain, PPPoE, Radius, Proxy, POP3, Web, Third-Party Server, Sangfor Appliance (selected), Database, and Others. The main configuration area has a text box explaining that user credentials could be shared. There are two checkboxes: 'Receive user credentials from other Sangfor appliances' (unchecked) and 'Send user credentials to other Sangfor appliances' (checked). Below the second checkbox, there is a 'Forward Credentials To' field with the value '192.168.20.0/24;%192.168.20.1:1775;%'. At the bottom, there is a 'Shared Key' field with a masked value '\*\*\*'. A green circular icon with a 'G' is visible in the bottom right corner of the configuration area.

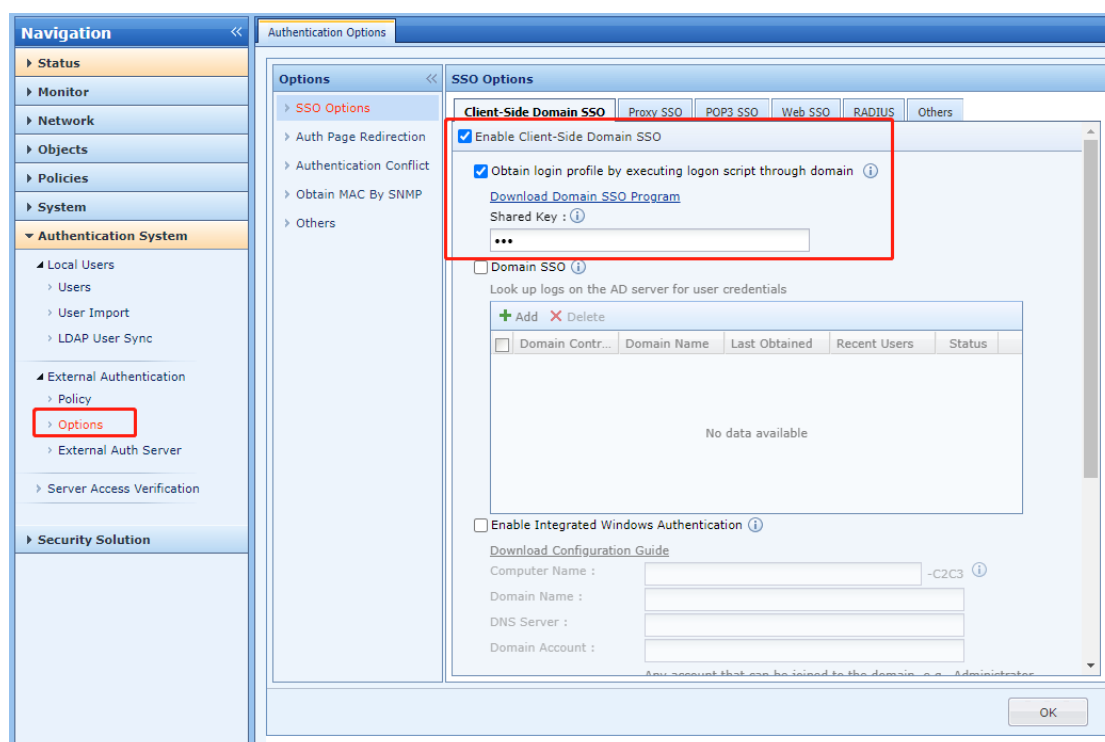


## 5.2 NGAF configure the Sangfor Appliance SSO

**Step 1.** Select the 192.168.20.0/24 IP range, NGAF device authentication policy configured to None/SSO SSO, local or external password authentication.



**Step 2.** NGAF checks the **Obtain login profile by executing the login script through the domain**, and the shared key must be the same configured in the IAG device. The shared key must be the same as IAG.



## 6 Precaution

1. During deployment, the communication between the two devices needs to be normal so the Sangfor Appliance can be work normally.
2. The shared key configured by the forwarding authentication device and the received authentication device must be the same.
3. Users who are online with open authentication will not be forwarded.
4. Sangfor Appliance only supports Local password authentication, external password authentication, mobile phone SMS verification, single sign-on, Dkey authentication information. Other than the above method will not be forwarded to other Sangfor Device.



**SANGFOR**

