

# SANGFOR INTERNET ACCESS GATEWAY

Simplify User & Network Management



- ✓ *Comprehensive authentication methods with the most powerful bandwidth management.*
- ✓ *Personalized analytics reports to create business value from user online data.*
- ✓ *Securing employees internet access with augmenting audit capabilities.*



**SANGFOR**





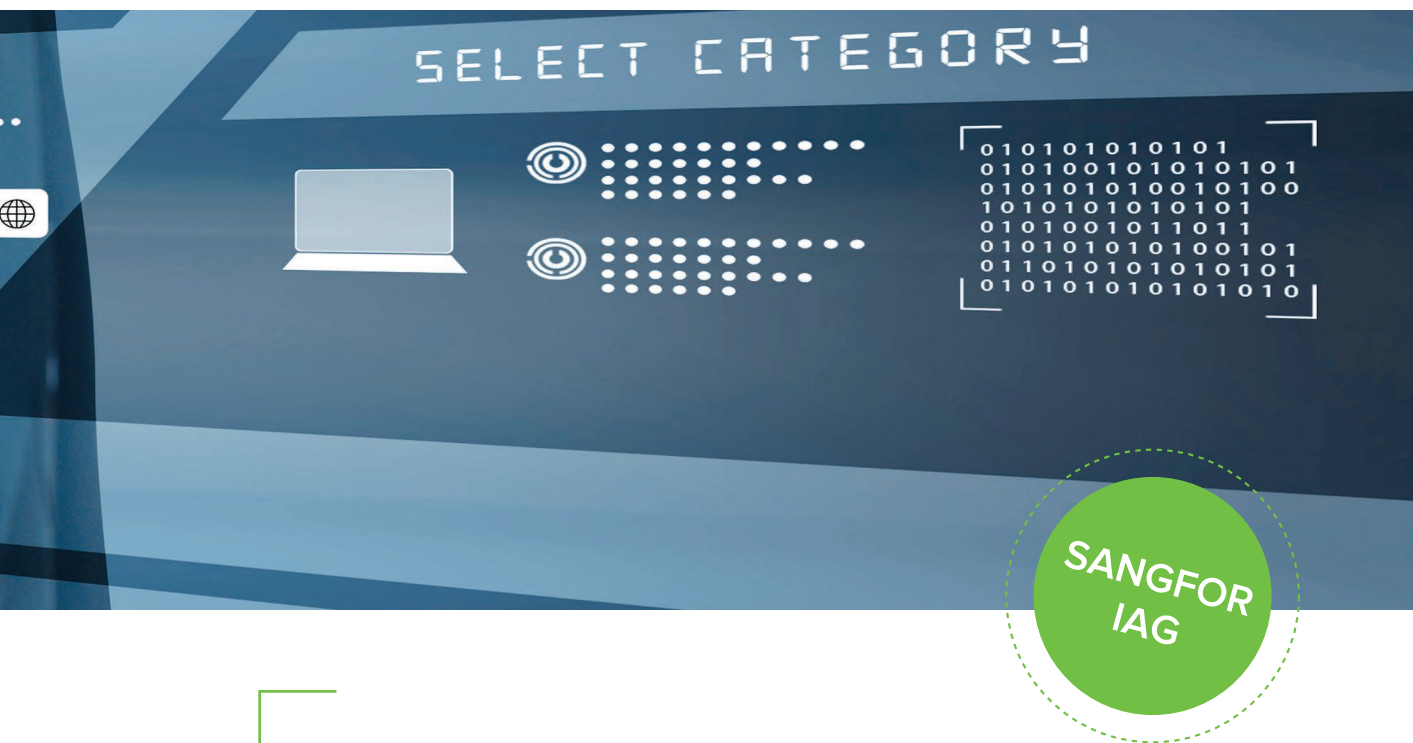
## Sangfor Internet Access Gateway Solution

Internet has become an increasingly vital platform for most businesses as an increasing number of business-critical applications are deployed over the Internet. However, with great opportunities come great challenges. Improving user experience & work efficiency, blocking illegal endpoints, reducing bandwidth consumption, guarding intellectual property rights, protecting against malware and implementing internet access compliance have become the primary challenges for IT managers, who are often seen as an expense rather than an investment.

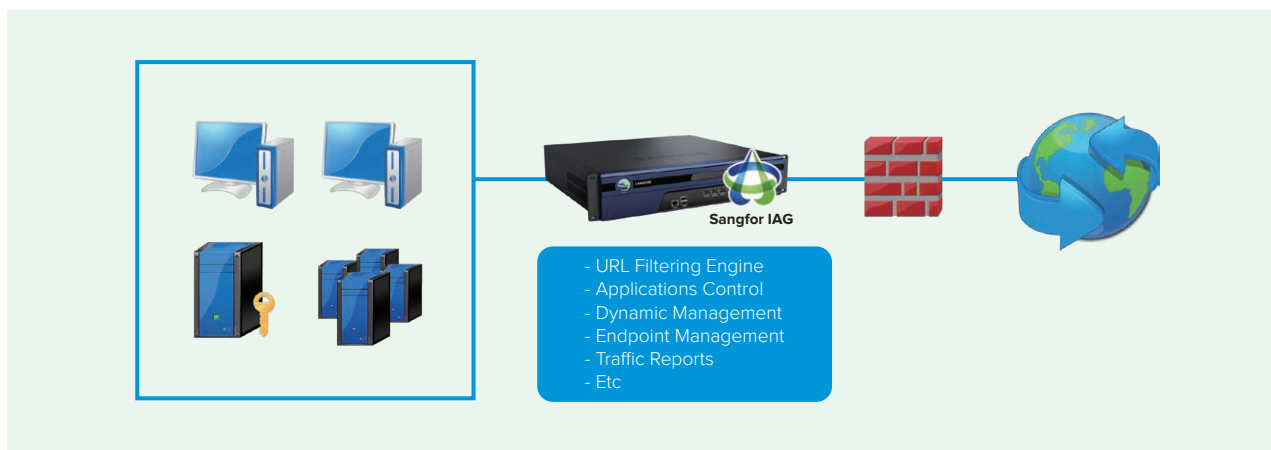
Moreover, with the rise of the BYOD (Bring Your Own Device) in the work environment, superior network management tools are needed more urgently than ever for overburdened IT departments.

SANGFOR Internet Access Gateway (IAG) is the ideal solution designed to tackle enterprise network challenges by offering simple and highly visible user & network management.

- Bandwidth Management
- Traffic Quota Support
- Proxy Server
- User Management
- Unified management for LAN+WLAN
- Multiple Authentication Methods
- IPv6 Support
- URL Filtering & APP Control
- Internet Traffic Reporting
- Anti-Proxy
- User Authentication
- Block & Detect illegal Wi-Fi
- Separate International & Domestic Bandwidth Mgmt.
- Built-in IPSec VPN Module



With SANGFOR IAG, both wired and wireless environments are coupled to ensure uniformity of management policies & present a comprehensive overview of all devices connected to the network. Through continuous market research and constant investment in R&D, Sangfor IAG also provides strong value-added features enabling you to maximize the potential of your wireless network. This allows you to better understand your user behaviour, facilitate user authentication and helps you generate increased revenue.





## Simple & Intuitive Reporting

- Advanced Report Center: Accurate Traffic Reporting and Graphs
- Content Visibility and Auditing: Instant Messaging, Emails and Social Media

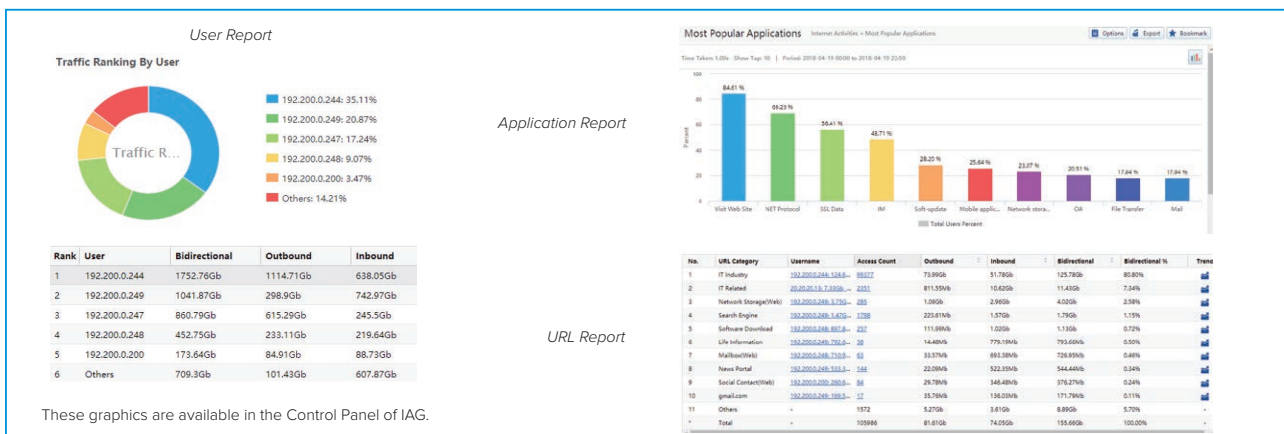
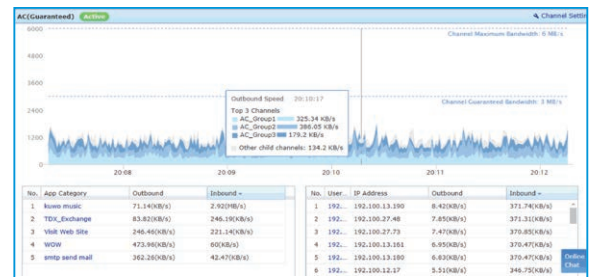
The old adage “You can't manage what you can't see” describes the challenges and risks of modern enterprise networks, making a comprehensive Report Center a critical component for IT departments to analyse network traffic. SANGFOR IAG includes an Advanced Report Center supporting numerous report customization options measuring traffic statistics, queries, ranking, times and behaviour of user & user groups, helping enterprises analyse the root causes of all network issues.

In addition, as information and data are becoming key business assets, enterprises are paying more attention to preventing potential information leakage and disruptive network activities. SANGFOR IAG boasts refined content auditing for common Instant Messaging programs (Yahoo Messenger, Skype, Line, etc.), Email and Social Media (Facebook, Twitter, YouTube etc.).



### Advanced Report Center

IAG Advanced Report Center records, audits and counts all network behaviour of intranet users in easy-to-read graphical reports. With reports, curves and statistics, IT managers are provided with all the detailed information they need about their network, including Internet access activities, bandwidth consumption and viewed content. Reports are self-generating and sent automatically & regularly to an appointed e-mail address to effectively assist in the network design, security and optimization of bandwidth usage.





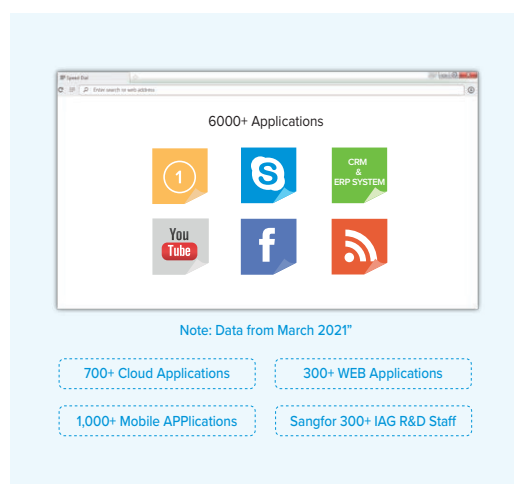
# BM & User Access Management

- Bandwidth Management: Guaranteed Bandwidth for Critical Applications
- User Access Management: Avoid Abuse by Restricting Access & Devices
- Application Control: Protect Enterprises Against Unauthorized Applications
- URL Filtering: Monitor & Control Evasive Activities
- Endpoint Control: Management of Mobile Devices & Tablets
- Illegal Wi-Fi Hotspot Detection: Block Phishing Wi-Fi to Avoid Data Leakage

To solve these common issues SANGFOR IAG employs a URL & application database, which helps IT administrators effectively control users online behaviour by setting specific policies. At the moment Sangfor IAG has more than 6,000+ applications in its database including 700+ Cloud applications, 1,000+ Mobile applications and 300+ Web applications, with an R&D team dedicated to updating it every two weeks.

In addition, as the BYOD trend is becoming more and more popular, mobile devices should be also included in the enterprise network management policy. IAG can control mobile devices by identifying and applying specific access and control policies, according to the device OS, group and location, unifying both LAN and WAN management.

SANGFOR IAG also detects and blocks illegal Wi-Fi hotspots to avoid any information leakage from laptops, smartphones or tablets. A wireless endpoint list will display which endpoint is using an illegal Wi-Fi hotspot allowing the IT team to decide whether to block it or not.



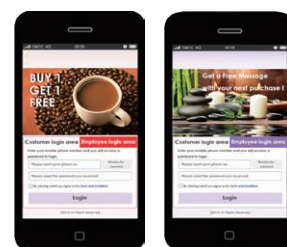
- Authentication based on SMS, Portal, Social Media & QR Code
- Push Advertising based on SMS, Portal & Social Media

## Authentication & Push Advertising based on SMS

One of the quickest and most common way to collect customer information is by collecting phone numbers. When connecting to the Wi-Fi access point, the login page will ask the customer to insert a phone number to access the internet, allowing your business to send advertisements to your customers through SMS or phone call.

## Authentication & Push Advertising based on Portal

Another common solution for collecting information is to redirect customers to a customized portal page after they have successfully connected to your Wi-Fi. This portal can be customized with any kind of information such as daily promotions, new products or services, etc.



## Authentication & Push Advertising based on Social Media

Facebook, Line and WeChat are the fastest growing social media platforms in Asia. They can now be used as an authentication method for your Wi-Fi while simultaneously increasing your number of followers. More importantly, you can use push information to reach a larger potential customer base.

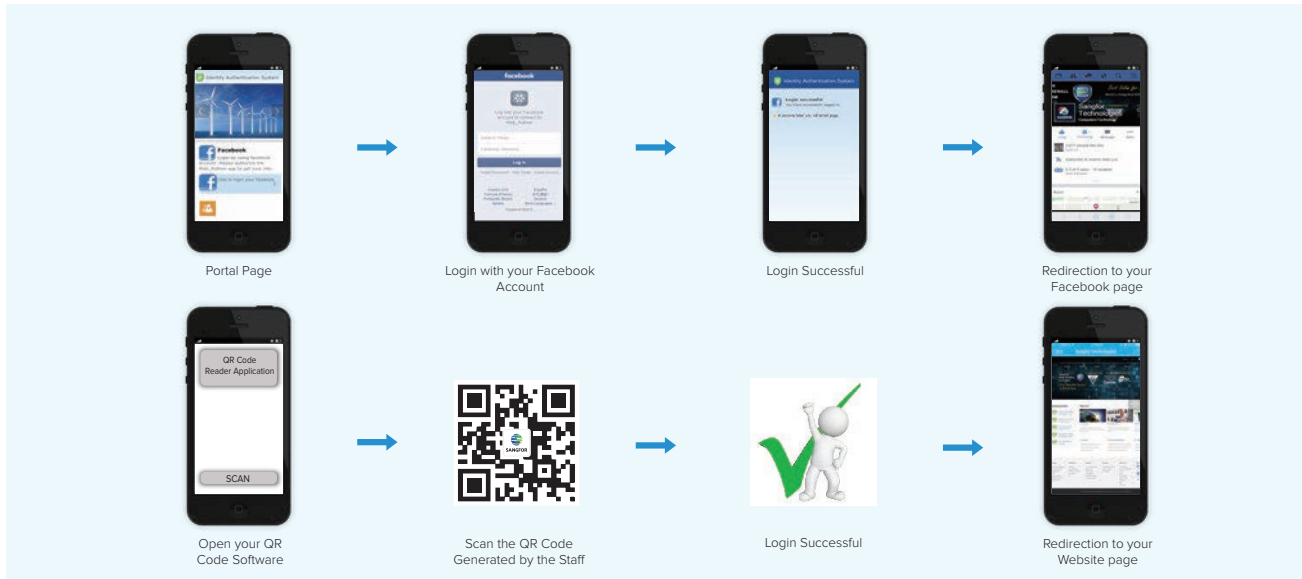






### Authentication via QR Code

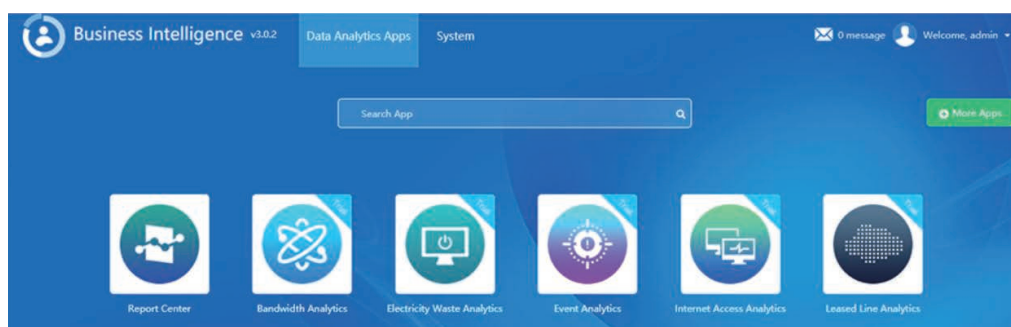
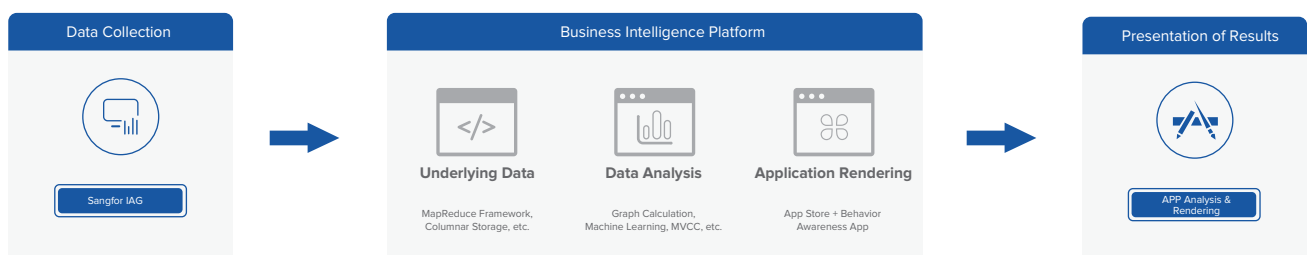
For companies receiving dozens of visitors per day, sharing the Wi-Fi password can become headache for the staff. With Sangfor IAG, you can create a QR code to allow your visitors to connect to the Wi-Fi simply by opening any QR code software and scan it. With this type of authentication, there is no need to change your Wi-Fi password every time and you can generate the QR Code according to each visitor group.



## Business Intelligence Platform

### The Look of Innovation

Sangfor Business Intelligence Platform (BI) is the newest major innovation within Sangfor IAG. It is based on IAG's massive internet log and conducts in-depth modelling analysis of user behaviour characteristics. It constantly utilizes behavioural awareness applications in different scenarios and continuously uncovers valuable data, helping organizations understand behaviour risk and simplify O&M.

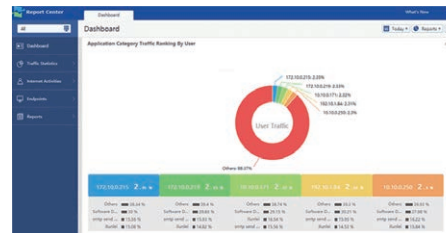


## Work Smarter, Not Harder



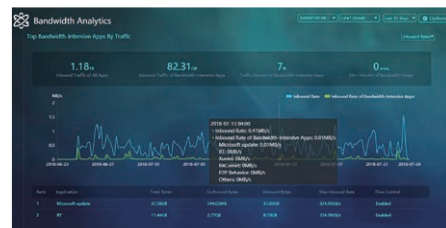
### Report Center

The Professional Report center has never been more simple, comprehensive or responsive. With a single dashboard and step-by-step analysis, you can simply see your network from top to bottom. Through analysis of traffic, duration, applications and URL's you can easily see customized reports on keywords, uploads, email and application use. Finally, proactively monitor your network with monthly base reports in 10 seconds giving you the 20/20 hindsight you need to plan ahead.



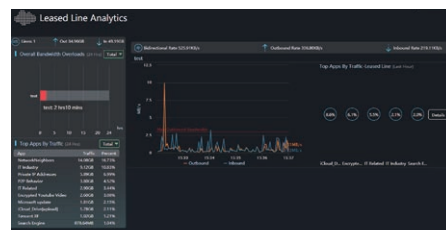
### Bandwidth Analysis

Give the people what they need! With Line Quality Analysis you can easily see what applications are utilizing the majority of your bandwidth and allocate or block bandwidth to individual applications with a single click.



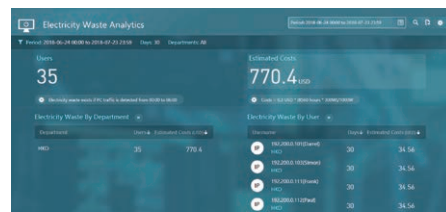
### Leased Line Analytics

It can provide a report on the quality of the leased line and help you with more informed decisions on when to expand the leased line bandwidth. It also provides visibility into the tunnel and the user to achieve awareness of the whole network.



### Electricity Waste Analytics

We work 24/7 so you don't need too! When the lights go out at night and the last employee leaves the building, Off Hours PC Scan allows you to monitor any network users, heightening your network security while also reducing business cost by monitoring power consumption outside business hours.



### Internet Access Analytics

Reduce your IT expenditure and make IT more valuable. See and control information and traffic for all branches with SANGFOR Overall Status Display. With easy to read reports on bandwidth and traffic distribution as well as efficiency-reducing applications and websites at all your branches and locations, simply point and click to optimize your bandwidth consumption and user experience.



### Event Analytics

Customise your view and see what is most important to you! Automatically scan for specific keywords indicative of malware or abnormal user behaviour and be proactive in managing your potential risk.



# Manage the SaaS Application in the Right Way

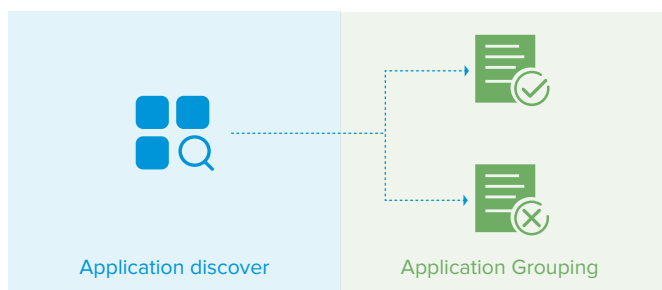


## 1. Discover Know the Risk

IAG with the built-in SaaS application database, identifies the most used applications, and also categorize them in group according to their security risks (sent emails, high bandwidth consumption, reduce of work efficiency, data leakage risk, etc.). The dashboard directly shows the applications and how much data has been used and how much files are transferred, making the IT administrators have a clear understanding of the applications in the network.

Applications		Users							App Catego
No.	Name	App Category	Tags	Sanction Status	Outgoing Files	Outbound(Bytes)	Inbound(Bytes)	Users	
1	QQ Mail[brow...	Mail		New	4	31.89 KB	8.12 KB	1	
2	Google Drive ...	Network storage	Disclosure Risk	New	0	2.24 MB	16.61 MB	15	
3	NetEase_Mail...	Mail	Reduce the Efficiency of Work	New	0	1.05 MB	3.51 MB	1	
4	Baidu Wangpa...	Network storage		New	0	721.42 KB	3.27 MB	5	
5	Baidu_Wenku[...	Network storage	Reduce the Efficiency of Work	New	0	707.45 KB	2.09 MB	1	
6	QQ Mail-Base	Mail	Reduce the Efficiency of Work	New	0	502.84 KB	441.16 KB	4	
7	Baidu Wangpa...	Network storage		New	0	464.88 KB	1.4 MB	2	
8	Sina_Mail_Base	Mail	Reduce the Efficiency of Work	New	0	113.78 KB	1.07 MB	1	
9	Google Hango...	IM	Reduce the Efficiency of Work	New	0	105.82 KB	2.26 MB	9	
10	Baidu Wangpa...	Network storage	Disclosure Risk	New	0	21.92 KB	44.07 KB	1	
11	Baidu Wangpa...	Network storage	Reduce the Efficiency of Work	New	0	8.8 KB	1.88 KB	4	
12	GitHub_Client	Network storage		New	0	5.33 KB	19.97 KB	1	
13	Dropbox	Network storage	Disclosure Risk	New	0	4.52 KB	13.52 KB	1	
14	Sohu Mail[sen...	Mail	Send Email	New	0	3.45 KB	2.21 KB	1	
15	NetEase Mail[...	Mail		New	0	587 B	585 B	1	

## 2. Grouping – Manage the Applications

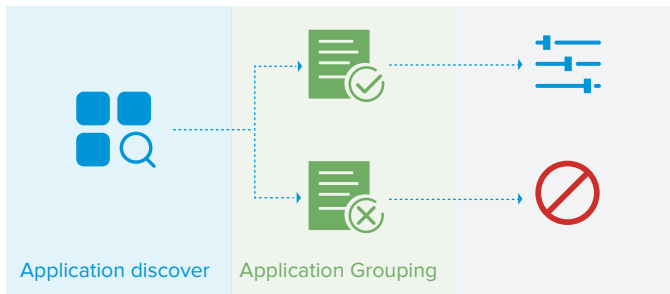


- **Sanctioned**– These applications provide IT teams with security guarantee and are allowed to be used by the user.
- **Unsanctioned**– These applications are potentially dangerous and the IT administrators do not want users to use them due to security risk and data leakage risk.

The sanction status makes it easier for managing the applications in a proper way. Sanctioned applications are the ones known and approved by the IT administrators, while the unsanctioned one are not known but may be used by the user, which may affect the user experience when all of them are blocked, or the ones that need to be monitored for a while.



### 3. Control the Risk



- **Control Policy**— Setup control policy over the applications.
- **Block**— These applications have been used in the network.

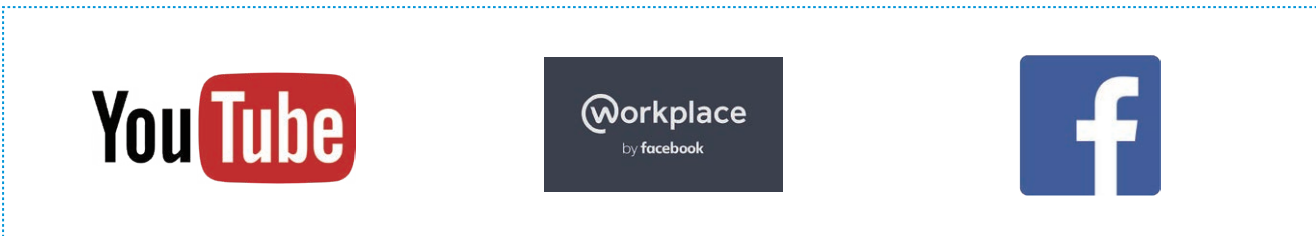
Sangfor IAG provides a granular control over the applications identified, together with the bandwidth control capabilities, providing much higher work productivity.

#### Create a space for work



The search engine is convenient to find the information you need, but it will also come out with inappropriate contents. Sangfor IAG can set Google, Bing and YouTube into default safe search mode, blocking inappropriate content that could affect the organization reputation.

#### Improve work productivity



The SaaS application brings convenience but also bring troubles. It allows user to access work resources freely but also entertainment resources. IAG can improve the user productivity by allowing user to only access specified work resources, such as the YouTube channel intended for organization training, access Facebook company page for work purpose only, and block all other Facebook content.



# Centralized Management Center

## Control Any Device - Anywhere

Success used to have its price, but now it doesn't! The issue of centralization and unification has become common as businesses expand and open new branches. In the past, various branches were individually responsible for management of their wired and wireless authentication, WIFI network and control policies.

User experience varied from branch to branch and WIFI connectivity did not roam with the user. SANGFOR IAG now provides centralized management capabilities which allow policies, restrictions and control to be exercised from a central platform, reducing operating costs and simplifying the IT management process. With the Centralized Management Control (CMC) system user experience is also improved by allowing roaming WIFI connectivity and unifying the information visible on each branch platform.

# Real-time asset management

IOT devices especially those are unknown has become another major dilemma among the administrators. Without standardized monitoring and enforcement policy, there is no way administrators can have current holistic view of total onboarding devices and compliance check to determine overall status.

Sangfor real-time asset management is designed to tackle this problem with 3 main components:

## Asset Discovery

It provides real-time status of what endpoint are running on your network and all this without any agent software. This allows administrators to build accurate inventory and up-to-date status about their network assets.

## Asset Classification

One of the crucial elements in asset management is the ability to identify any unknown IOT devices and perform classification to determine asset type.

## Endpoint Check

Compliance check on any endpoint devices to determine whether they are safe and allow to use the organization internet access.

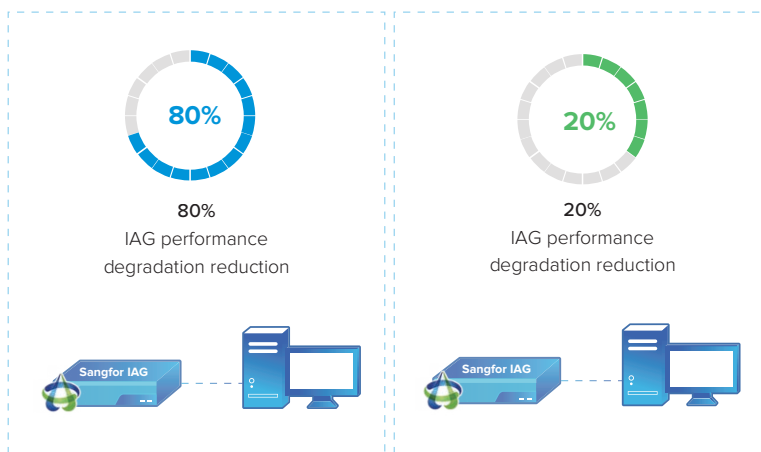


# Enhanced SSL Decryption

Typically, user always have to choose between having SSL decryption enabled with huge performance degradation and using internet access without any SSL decryption. IAG now provide another option to mitigate such performance degradation by using ingress client to perform SSL proxy decryption process.

With captive portal redirection, users will have the ability to deploy ingress client with ease along with root SSL certificate is distributed and installed together with ingress client.

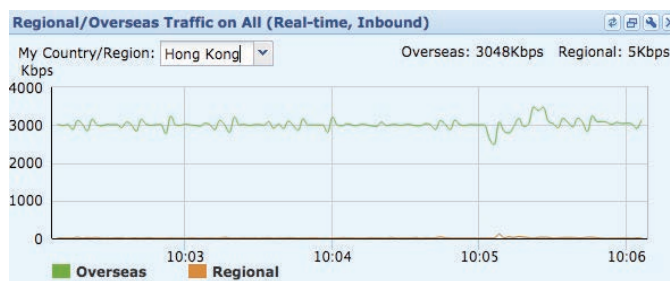
User can now plan their SSL decryption policy strategy without compromising performance loss by having use either IAG decryption, Ingress client decryption or running both for different network segments as an option.



# Advanced Bandwidth Management

## Separate Management of International & Domestic Bandwidth

As businesses cross borders IT needs to be aware of usage patterns, bandwidth needs, potential risks and differing costs and challenges associated with individual international locations. With Sangfor IAG, you can separate the bandwidth management for international and domestic internet access. This is especially important in countries where different fees for bandwidth usage apply but also improves international user experience and reduces risk of network security issues stemming from international locations by allowing full visibility and control of both domestic and international network traffic.



## SANGFOR IAG Product Family

Model	S5000-AC-I	M5000-AC-I-S	M5100-AC-I-S	M5200-AC-I	M5400-AC-I	M5500-AC-I	M5600-AC-I	M6000-AC-I <sup>2</sup>	M6000-UPG <sup>3</sup>	M9000-AC-I <sup>2</sup>	M10000-AC-I <sup>2</sup>	M12000-AC-I <sup>2</sup>
Profile	Desktop	1U	1U	1U	1U	1U	1U	2U	2U	2U	2U	2U
HD Capacity	64G SSD	128G SSD	128G SSD	1TB	1TB	1TB	1TB	1TB	1TB	1TB 64G SSD	1TB 64G SSD	1TB 64G SSD
Application Layer Throughput Options <sup>1</sup>	40 Mbps	80 Mbps	160 Mbps	400 Mbps	600 Mbps	1 Gbps	1.2 Gbps	2 Gbps	4 Gbps	10 Gbps	20 Gbps	40 Gbps
Recommended Concurrent Users	50 PCs~100 Mob	200 PCs~200 Mob	600	2000	3000	5000	6000	15000	20000	50000	100000	200000

<sup>1</sup> Represents the maximum bidirectional flow (max. inbound + outbound flow).

<sup>2</sup> Additional models are available for hardware based SSL decryption.

<sup>3</sup> M6000-UPG is a license upgrade from M6000 with application layer bandwidth increased from 1G to 2G.

Power and Physical Specifications												
Model	S5000-AC-I	M5000-AC-I-S	M5100-AC-I-S	M5200-AC-I	M5400-AC-I	M5500-AC-I	M5600-AC-I	M6000-AC-I <sup>2</sup>	M6000-UPG <sup>3</sup>	M9000-AC-I <sup>2</sup>	M10000-AC-I <sup>2</sup>	M12000-AC-I <sup>2</sup>
Support Dual Power Supplies	N/A	N/A	N/A	N/A	N/A	N/A	YES	YES	YES	YES	YES	YES
Power [Watt] (Typical)	60W	40W	40W	40W	40W	60W	150W	150W	150W	325W	325W	325W
Working Temperature	0°C~45°C	0°C~45°C	0°C~45°C	0°C~45°C	0°C~45°C	0°C~45°C	0°C~40°C	0°C~40°C	0°C~40°C	0°C~40°C	0°C~40°C	0°C~40°C
System Dimensions (W x L x H in mm)	275 x 175 x 44.5	430 x 300 x 44.5	430 x 300 x 44.5	430 x 375 x 44.5	430 x 400 x 44.5	440 x 600 x 89	440 x 600 x 89	440 x 600 x 89	440 x 600 x 89	440 x 600 x 89	440 x 600 x 89	440 x 600 x 89
System Weight	1.7Kg	3.4 Kg	3.4 Kg	6.6Kg	6.6Kg	7.5Kg	9Kg	18.5Kg	18.5Kg	20.0Kg	20.0Kg	20.0Kg
Relative Humidity	5%~95% non-condensing											



Network Interfaces												
Model	S5000-AC-I	M5000-AC-I-S	M5100-AC-I-S	M5200-AC-I	M5400-AC-I	M5500-AC-I	M5600-AC-I	M6000-AC-I <sup>2</sup>	M6000-UPG <sup>2</sup>	M9000-AC-I <sup>2</sup>	M10000-AC-I <sup>2</sup>	M12000-AC-I <sup>2</sup>
Bypass (copper)	N/A	1 pair	1 pair	2 pairs	2 pairs	2 pairs	3 pairs	3 pairs	3 pairs	2 pairs	2 pairs	2 pairs
10/100/1000 Base-T	3	4	4	6	6	6	6	6	6	4	4	4
1G SFP	N/A	N/A	N/A	2	2	2	N/A	N/A	N/A	4	4	4
10GbE SFP+	N/A	N/A	N/A	N/A	N/A	N/A	2	2	2	2	2	4
Extended Slot Number	N/A	N/A	N/A	N/A	N/A	1	2	2	2	4	4	4
Serial Port	RJ45x1	RJ45x1	RJ45x1	RJ45x1	RJ45x1	RJ45x1	RJ45x1	RJ45x1	RJ45x1	RJ45x1	RJ45x1	RJ45x1
USB Port	2	2	2	2	2	2	2	2	2	2	2	2
Compliance and Certificates												
Compliance						CE, FCC, IPv6 Ready						

- Products specifications described herein are subject to change without prior notification.
- All performance values are “up to” and vary depending on the system configuration.

## viAG

### SANGFOR Virtual IAG (VMware & Sangfor HCI Platforms)

Model <sup>2</sup>	viAG-50 vmlAG-50	viAG-100 vmlAG-100	viAG-200 vmlAG-200	viAG-300 vmlAG-300	viAG-700 vmlAG-700	viAG-1000 vmlAG-1000	viAG-2000
FW Throughput Options <sup>1</sup>	200 Mbps	500 Mbps	1 Gbps	1.4 Gbps	2.1 Gbps	3.0 Gbps	5.0 Gbps
Application Layer Throughput Options <sup>1</sup>	100 Mbps	200 Mbps	400 Mbps	600 Mbps	1.4 Gbps	2 Gbps	4 Gbps
Recommended Concurrent Users	500	1000	3000	5000	7000	10000	20000

<sup>1</sup>: Represents the maximum bidirectional flow (max. inbound + outbound flow).

<sup>2</sup>: viAG = Virtual IAG based on Sangfor HCI  
vmlAG = Virtual IAG based on VMware ESXi

## System Requirements

viAG & vmlAG System Requirements	viAG-50 vmlAG-50	viAG-100 vmlAG-100	viAG-200 vmlAG-200
Virtualization Platform	Sangfor HCI/ VMWare ESXi	Sangfor HCI/ VMWare ESXi	Sangfor HCI/ VMWare ESXi
CPU	Min. 1 Virtual Core	Min. 1 Virtual Core	Min. 2 Virtual Cores
Memory	2GB	2GB	4GB
Disk Space	80GB	80GB	80GB

viAG & vmlAG System Requirements	viAG-300 vmlAG-300	viAG-700 vmlAG-700	viAG-1000, viAG2000 vmlAG-1000
Virtualization Platform	Sangfor HCI/ VMWare ESXi	Sangfor HCI/ VMWare ESXi	Sangfor HCI/ VMWare ESXi
CPU	Min. 2 Virtual Cores	Min. 4 Virtual Cores	Min. 8 Virtual Cores
Memory	4GB	8GB	16GB
Disk Space	80GB	80GB	80GB

\*SANGFOR IAG can co-exist alongside another internet security system or any other Sangfor solutions.

## SANGFOR IAG Product Features

### User Authentication and Management

Mapping and Identifying Users	IP, MAC, IP/MAC binding, hostname, USB Key, SMS, QR-Code, Portal, WeChat, Facebook, Line, Gmail, Twitter.
User Accounts Importing	- Import user accounts information using CSV file, LDAP Server. - Synchronize user with LDAP, Database and H3C CAMS Server.
Integration and SSO Option	Active Directory/POP3/Proxy/Web Server, Radius, Third-party authentication device, Database Server.
New User Management	- Automatically map new user to its privileged groups in local database based on its IP range, subnet or external authentication server group. - Automatically map new users to a pre-defined privileged group as temporary accounts.
Account Attribution	Public (Share user login)/ Private (Single user login) account option.
WLAN Auth. Integration	Aruba, Ruckus, Cisco, etc.

### Access Control

Application Control	Identify and control applications through application DB or port.
URL Filter	URL DB, keyword in web-page based control.
Search Engine Control	Managed by keywords.
Enhanced Email Control	Managed by source address, destination address, keywords in email, keywords in body/title, attachment, type/size/count based control.
Enhanced IM Control	Comprehensive management to IM tools such as MSN, Yahoo!, as well as encrypted IM such as Skype, Gtalk, MSNShell, etc.
File Filter	Control HTTP, FTP upload and download activity based on true file type.
SSL Traffic Control	Certificate, text content based control and filter.
SSL Decryption	Gateway decryption and ingress client decryption

### Asset Management

Asset Discovery	- Identify and list of IOT devices based on endpoint type - Advance search and filter based on endpoint parameter - Export to csv
Asset Classification	Categorize endpoint type based on host, mobile endpoint, network device, dumb endpoint, medical equipment, network endpoint sharing and custom
Endpoint Check	Rule configured based on ingress client based (agent) and traffic based (agentless)

### Illegal Wi-Fi Detection and Blocking

Illegal Wi-Fi Detection and Blocking	Detect the endpoint information from every IP address.
--------------------------------------	--



**Bandwidth Management (BM)**

BM Policy	Traffic guarantee/limit policy for uplink and/or downlink base on bandwidth percentage of the pipe, max bandwidth per user, user/application priority, exclusion policy.
BM Objects	Application type, website type, file type, user, schedule, destination IP, etc.
Separate BM Management	For International & Domestic Traffic.
Bandwidth Guarantee & Limitation	Allocate bandwidth resource according to business type & guarantee bandwidth for core business applications and restrict irrelevant traffic.
Multi-level SON Channel	Match the organizational structure to achieve finegrained bandwidth management.
Dynamic Bandwidth Management	<ul style="list-style-type: none"> <li>- "Bandwidth Borrowing" among BM tunnel for full bandwidth utilization.</li> <li>- Specify a network flow thresholds as effective points of BM policy.</li> <li>- BM based on public IP (oversea).</li> <li>- Average allocation/free competition among users in a single traffic pipe.</li> </ul>
Virtual Line	Manage and control to each physical line independently and effectively bridge mode.

Multiplexing and Intelligent Routing	Provide link load balancing in router mode.
--------------------------------------	---

**Traffic Identification and Categorization**

Sangfor URL Database	<ul style="list-style-type: none"> <li>- Leverage on-the-cloud infrastructure, dynamically categorizes millions URLs into the predefine categories.</li> <li>- Support configurable in-box cache footprint.</li> </ul>
Application Database	Independent Internet application signatures database.
Intelligent Identification Rules	Identify P2P/Proxy tools/VOIP/SSL traffic intelligently through dynamic flow characteristics analysis.
File Type Identification	<ul style="list-style-type: none"> <li>- By extension name.</li> <li>- By file type (data pattern).</li> </ul>

**Value-Added Services**

Big Data Mining	Record of online behavior data record, data modeling analysis and analytics report.
-----------------	---

**Report Center**

Report Objects	Application flow, user behavior counts, online duration per user & per application, virus and security, keywords, etc.
Graphical Reports	Counts, ranking, comparison, trends analysis with statistics, pie, bar, line chart, etc.
Real-Time Report	Real-time monitor of CPU/hard disk/traffic/connection/session status, online user information, traffic ranking, connection ranking, real-time utilization, visibility of bandwidth channels.
Content Log	Content log including IM chat (Gtalk, Skype, QQ, MSN, Yahoo! Messenger, etc.), SMTP and Web mail content and attachment (Gmail, Yahoo, etc.), BBS posts (Facebook, Twitter), etc.
Customizable Risk Report	Employee turnover trend, disclosure, work efficiency, security risks and other risk reports.
CIO Report	Tailored reports of overall network analysis and risk management for CIO.
Web-Access Connection Quality Report	Used for clear evaluation of the overall network quality. Users with poor web access quality can be listed down.
Report Format	CSV, PDF.
Report Center Storage	Built-in internal report center and optional external report center.
External Reports Storage Security	<ul style="list-style-type: none"> <li>- Option to protect the report center by using external authentication key for additional security.</li> <li>- "Google Like" search engine GUI for external report center.</li> <li>- Email subscription.</li> </ul>

## Control Tools for Manageability

Notification (Reminder)	Notify end user for online time of specific application and the flow speed of specific application.
Flow/Duration Control	Daily/Monthly flow quota per user. Daily online duration quota per user with exception case based on specific application. Concurrent session quota per user.
Endpoint security compliance	<ul style="list-style-type: none"> <li>- Ingress Client Based (Agent) Login domain, operating system, process, file, registry, task, patch, access check, access control, external device control, windows account, anti-defacement and anti-virus software related to update and database version</li> <li>- Traffic Based (Agentless) Check personal software and enterprise software for anti-virus destination server IP heartbeat</li> </ul>
Audit-Free Key	Prevents access audits and control for users that assigned with audit-free keys.
Hierarchical Administration	Functionality of different modules can be assigned to different administrators as needed, via a hierarchical management paradigm. Administration of different functions and modules can be delegated to different administrative groups.

## Network & Deployment

Centralized Management	Unified the configuration and policy for multiple devices, remote control and monitor running status.
LAN+WLAN Management	Set special control policy for mobile user based on user & location. Suitable for BYOD office environment.
Security modules	<ul style="list-style-type: none"> <li>- Built-in IPsec VPN.</li> <li>- IPSec Protocol: AH, ESP.</li> <li>- D-H Group: MODP768 Group (1), MODP1024 Group (2), MODP1536 Group (5).</li> <li>- IPSec Authentication Algorithm: MD5, SHA-1, SM3.</li> <li>- IPSec Encryption Algorithm: DES, 3DES, AES-128, AES-256, SANGFOR-DES, SCB2, SM4.</li> </ul>
Proxy Functions	Support explicit Proxy, including HTTP/HTTPS two-level Proxy, Sock4/Sock5 Proxy, Forwarding Proxy function and support ICAP protocol.
Deployment	Route, Bridge, Double Bridge, Bypass, Single-arm.
Stability	Hardware bypass, A/A, A/P.
IPv6	Support deployment in IPv6 environment & monitoring of IPv6 traffic.
Integrity	Support SNMP.

## Proxy

Proxy Service	HTTP Proxy / SOCKS4 / SOCKS5 / PAC SCRIPT.
Policies	Enables customers controller proxy data security.
ICAP	Serve the customers in financial field to achieve data disclosure prevention purpose.

## Business Intelligence

Self-Customized Application	Be aware of trends and incidents using keyword related searches to monitor traffic in real-time.
Bandwidth Analysis	Monitor bandwidth status, availability and top bandwidth consuming applications to provide better user experience.
Overall Status Display	Identify threats quickly and easily through combined IAG and NGAF logs.
Leased Line Quality Analytics	Understand the load and real-time status of traffic by collectively analysing user trends and application use.
Off Hours PC Scan	Monitor PC usage outside business hours.



## COMPANY PROFILE



Sangfor Technologies is a leading global vendor of IT infrastructure solutions, specializing in Cloud Computing & Network Security with a wide range of products & services including: Hyper-Converged Infrastructure, Virtual Desktop Infrastructure, Next Generation Firewall, Internet Access Management, Endpoint Protection, Ransomware Protection, Incident Response, WAN Optimization, and SD-WAN.

Sangfor takes customers' business needs and user experience seriously, placing them at the heart of our corporate strategy. Constant innovation and commitment to creating value for our customers helps them achieve sustainable growth. Established in 2000, Sangfor currently has 6,000+ employees with more than 60 branch offices globally in exciting locations like Hong Kong, Malaysia, Thailand, Indonesia, Singapore, Philippines, Vietnam, Myanmar, Pakistan, UAE, Italy and the USA.

## CONTINUOUS INNOVATION & EXCELLENT SERVICE

Sangfor invests at least 20% of yearly revenue in R&D, improving current products and developing new solutions in their five R&D centers in the USA & China. Sangfor has applied for more than 1,500+ patents with more patent applications scheduled for 2021. This dedication to innovation enables Sangfor to release new and updated versions of products every quarter and launch new products yearly or bi-yearly.

Sangfor also emphasizes excellent service. With three Customer Service Centers in Malaysia & China, Sangfor's total customer service capacity exceeds 300+ technicians and providers.

With thousands of certified engineers and 24x7 online support 365 days a year, Sangfor customers enjoy fast and personalized on-site service support.

At present, Sangfor has more than 100,000 customers worldwide, many of them Fortune 500 companies, governmental institutions, universities and schools.



# AWARDS & ACHIEVEMENTS



"Technology Fast 500  
Asia Pacific Region"  
Award for 8 consecutive  
years from 2005 to 2012  
by Deloitte



Sangfor SSL VPN No. 1  
in Network Security  
market in China, Hong  
Kong & Taiwan  
according to F&S



No. 1 for Secure Content  
Management Hardware  
and VPN Hardware  
segment in China  
according to IDC



Sangfor NGAF WAF  
recommended  
by NSS  
labs (2014)



"Most Promising Network  
Security Solution" in  
June 2016 by Singapore  
NetworkWorld Asia



"Readers Choice Awards  
for Enterprise Security"  
in October 2016 by  
Computerworld Malaysia



Member of various  
technology  
alliances including  
VirusTotal



"Next Gen" Award for  
Sangfor Endpoint Secure  
by Cyber Defense  
Magazine (2019)



SAP Certified for Cloud  
and Infrastructure  
Operations and SAP  
HANA Operations (2019)



ICSA Labs certification  
for Sangfor Next  
Generation Firewall  
(2020)



High Performance  
with Low Impact  
Certification for Sangfor  
Endpoint Secure by  
AV-Test (2020)



Sangfor Engine Zero  
recognized by VirusTotal  
as the newest selection  
of the best and brightest  
cloud malware sandbox  
vendor

## Listed in the Gartner Magic Quadrant



2010-2011



2011-2020



2013-2016



2015-2020



2016



2019-2020



2012-2016

# SANGFOR INTERNET ACCESS GATEWAY

---

## SANGFOR INTERNATIONAL OFFICES

### SANGFOR SINGAPORE

8 Burn Road # 04-09, Trivex,  
Singapore (369977)  
Tel: (+65) 6276 9133

### SANGFOR HONG KONG

Unit 04, 6/F, Greenfield Tower, Concordia Plaza,  
No.1 Science Museum Road, Tsim Sha Tsui East,  
Kowloon, Hong Kong  
Tel: (+852) 3427 9160  
Fax: (+852) 3427 9910

### SANGFOR INDONESIA

MD Place 3rd Floor, Jl Setiabudi No.7, Jakarta Selatan  
12910, Indonesia  
Tel: (+62) 21 2933 2643  
Fax: (+62) 21 2933 2643

### SANGFOR MALAYSIA

No. 47-10 The Boulevard Offices, Mid Valley City, Lingkaran  
Syed Putra, 59200 Kuala Lumpur, Malaysia  
Tel: (+60) 3 2201 0192  
Fax: (+60) 3 2282 1206

### SANGFOR THAILAND

6th Floor, 518/5 Maneeya Center Building, Ploenchit Road,  
Lumpini, Patumwan, Bangkok, 10330 Thailand  
Tel: (+66) 22517700  
Fax: (+66) 22517700

### SANGFOR USA

2901 Tasman Drive, Suite 107, Santa Clara, California, USA  
Tel: (+1) 408 520 7898  
Fax: (+1) 408 520 7898

### SANGFOR EMEA

C-80 (C-Wing), Dubai Silicon Oasis HQ Building, Dubai, UAE  
Tel: +971-52-9606471

### SANGFOR PAKISTAN

D203, Navy Housing Scheme, ZamZamma, Karachi, Pakistan  
Tel: +92 3142288929

### SANGFOR ITALY

Sede Legale ed Operativa via E. Berlinguer, 9 20834 Nova  
Milanese MB Italia  
Tel: +393400616767

### SANGFOR USA

2901 Tasman Drive, Suite 107, Santa Clara, California, USA  
Tel: (+1) 408 520 7898  
Fax: (+1) 408 520 7898

## AVAILABLE SOLUTIONS

### IAG

Simplify User & Network Management

### NGAF

Smarter Security Powered By AI

### Endpoint Secure

The Future of Endpoint Security

### Cyber Command

Powerful Intelligent Threat and Detection Platform

### HCI

Driving Hyperconvergence to Fully Converged

### VDI

Ultimate User Experience that Beats PC

### SD-WAN

Boost Your Branch Business With Sangfor

### SIER

Simplify & Intelligence Your Branch Network

### Access

Cloud-based SASE for Branch Offices & Remote Users

### WANO

Enjoy a LAN Speed on your WAN



**SANGFOR**



[www.sangfor.com](http://www.sangfor.com)

Sales : [sales@sangfor.com](mailto:sales@sangfor.com)

Marketing : [marketing@sangfor.com](mailto:marketing@sangfor.com)

Global Service Center : +60 12711 7129 (or 7511)

Our Social Networks :



<https://twitter.com/SANGFOR>



<https://www.linkedin.com/company/sangfor-technologies>



<https://www.facebook.com/Sangfor>



<https://plus.google.com/+SangforTechnologies>



<http://www.youtube.com/user/SangforTechnologies>