



**SANGFOR**



# **IAM**

## **Panduan Konfigurasi PDLAN**

**Versi 12.0.18**



## Log Perubahan

Tanggal	Deskripsi Perubahan
April 2, 2019	Rilis Dokumen Versi 12.0.18 .

# Daftar Isi

1	Aplikasi Skenario .....	1
2	Konfigurasi dan Tangkapan Layar .....	1
2.1	Topologi .....	1
2.2	Konfigurasi Webagent.....	1
2.3	Konfigurasi Virtual IP Pool.....	1
2.4	Konfigurasi VPN Users.....	2
2.5	Mobile Users Install PDLAN Client .....	2
2.6	Konfigurasi PDLAN .....	3
3	Hasil Pengujian .....	3
3.1	PDLAN vpn terhubung berhasil.....	3
3.2	PDLAN users dapat mengakses HQ server secara normal.....	4
4	Tindakan Pencegahan .....	4

## 1 Aplikasi Skenario

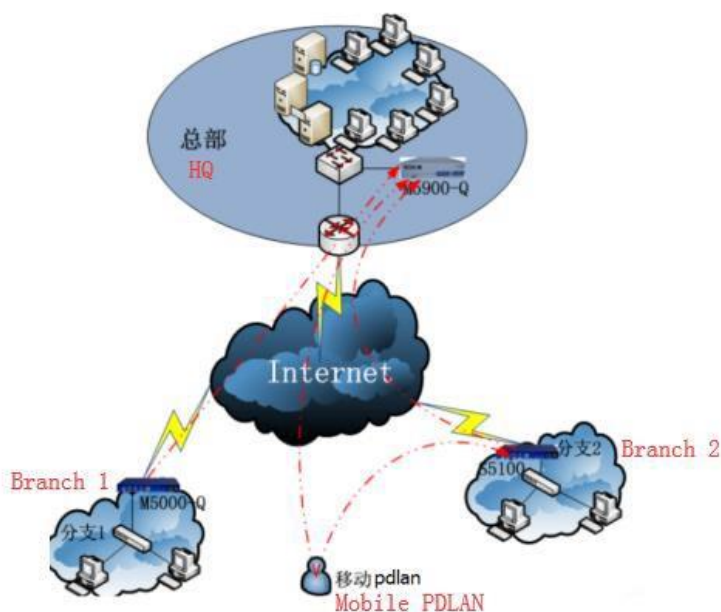
Karyawan perusahaan dapat menggunakan VPN untuk terhubung ke perusahaan untuk mencapai berbagai sumber daya di luar perusahaan.

Persyaratan :

Siapkan IAM versi 11.x.

## 2 Konfigurasi dan Tangkapan Layar

### 2.1 Topologi



### 2.2 Konfigurasi Webagent

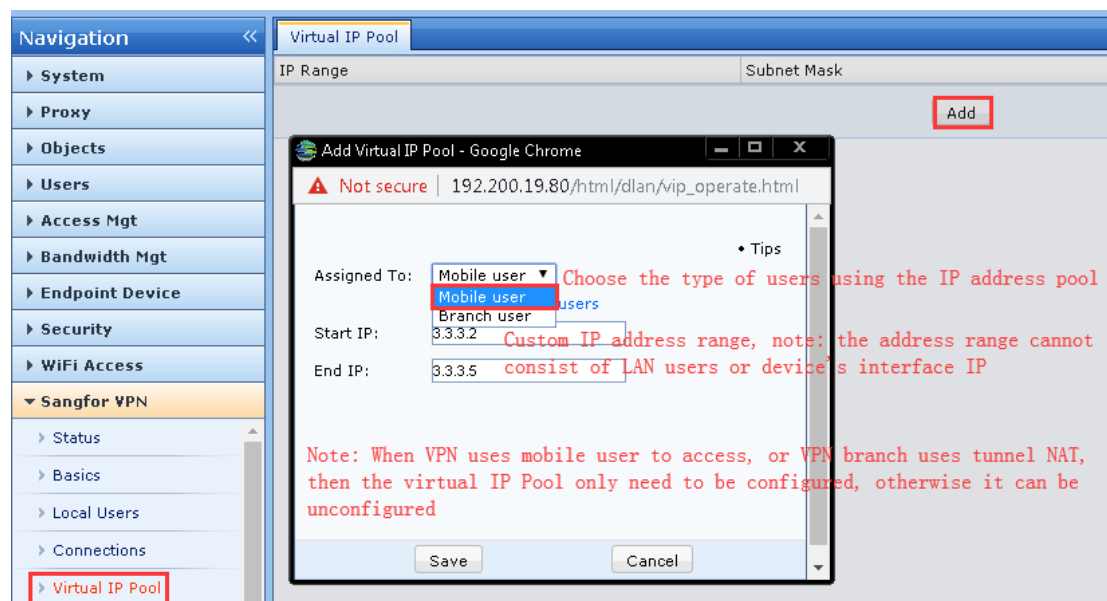
Konfigurasi route deployment mode dari IAM di kantor pusat dan konfigurasi webagent.

The screenshot shows the 'Basics' tab of the Sangfor VPN configuration interface. The left sidebar contains a navigation menu with options: System, Proxy, Objects, Users, Access Mgt, Bandwidth Mgt, Endpoint Device, Security, WiFi Access, and Sangfor VPN. The 'Sangfor VPN' section is expanded, showing 'Status' and 'Basics' (selected). The main configuration area for 'Basics' includes the following fields and options:

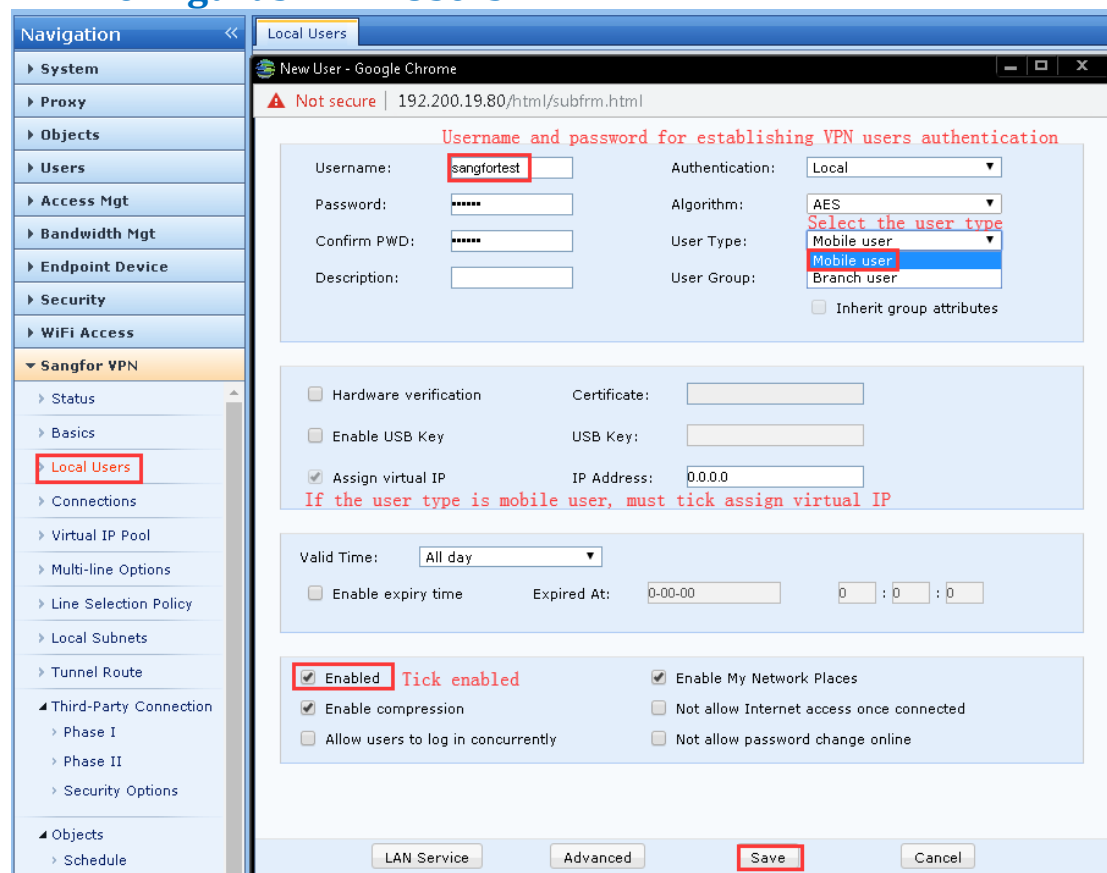
- Primary WebAgent: 10.254.254.254:4009 (with a 'Setup webagent' button and a 'Change Password' button)
- Secondary WebAgent: (empty field with a 'Change Password' button)
- MTU Value(224-2000): 1500
- Min Compression(99-5000): 100
- VPN Listening Port(default 4009): 4009
- ☒ Modify MSS(only for use of UDP)
- ☒ Directly connects to Internet ☐ Indirectly connects to Internet
- When the public IP is static, webagent format: IP:4009
- When the public IP is ADSL, webagent format: can be applied from Sangfor Technical Support
- Buttons: 'Test' and 'Save'

Test results are displayed in red text: 'Test primary WebAgent successfully' and 'Failed to test secondary WebAgent'. A note states: 'Test successful means webagent format is correct and usable'. Another note says: 'If shared key is configured, then the mobile end also need to setup the same shared key only can establish VPN'.

### 2.3 Konfigurasi Virtual IP Pool



## 2.4 Konfigurasi VPN Users



## 2.5 Mobile Users Install PDLAN Client



Download and install the PDLAN from sangfor community



After the installation, the desktop and startup will automatically create Sangfor PDLAN, double click to open it.

## 2.6 Konfigurasi PDLAN

- ① PDLAN basic config, PDLAN hanya mendukung sistem windows.

**Basic Setting**

Basic setting includes setting of webagent, VPN listening port, minimum compact value and MTU value, etc. Please refer to Help for setting method in detail.

Note: Please click the "Apply" button to save any changes.

Webagent1:

Fill up the HQ webagent settings

Webagent2:

MTU Value(224-2000):

Min. Compact(99-5000):

VPN Listen Port(4009):

☒ Modify MSS(available in UDP mode)

Click to apply it

- ② PDLAN main connection parameters setting

**User Setting**

You can set username and password to connect to MDLAN here. It requires correct username and password to connect to MDLAN.

Note: Please click the "Apply" button to save any changes.

Fill in the username and password set by HQ

Username:

Password:

Suggest to choose UDP mode if high latency or loss packet environment

Trans Mode:

Cross-ISP Optimization

☒ Enable  Packet lost rate(%)

**Change Username and Password**

You can change username and password here. In case of Dkey user, only password can be changed.

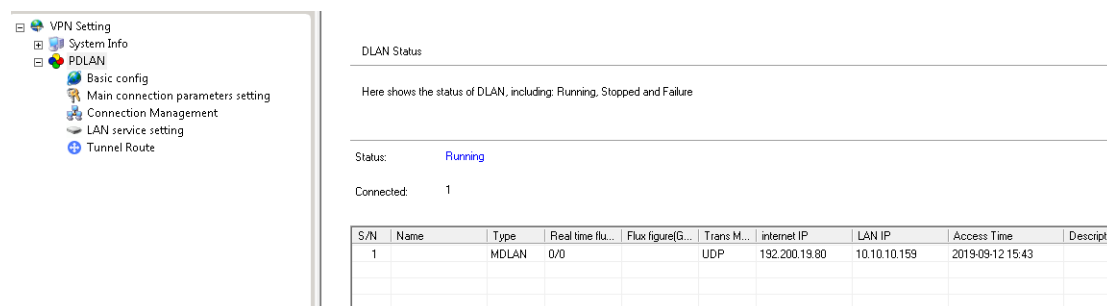
Name:

New PSW:

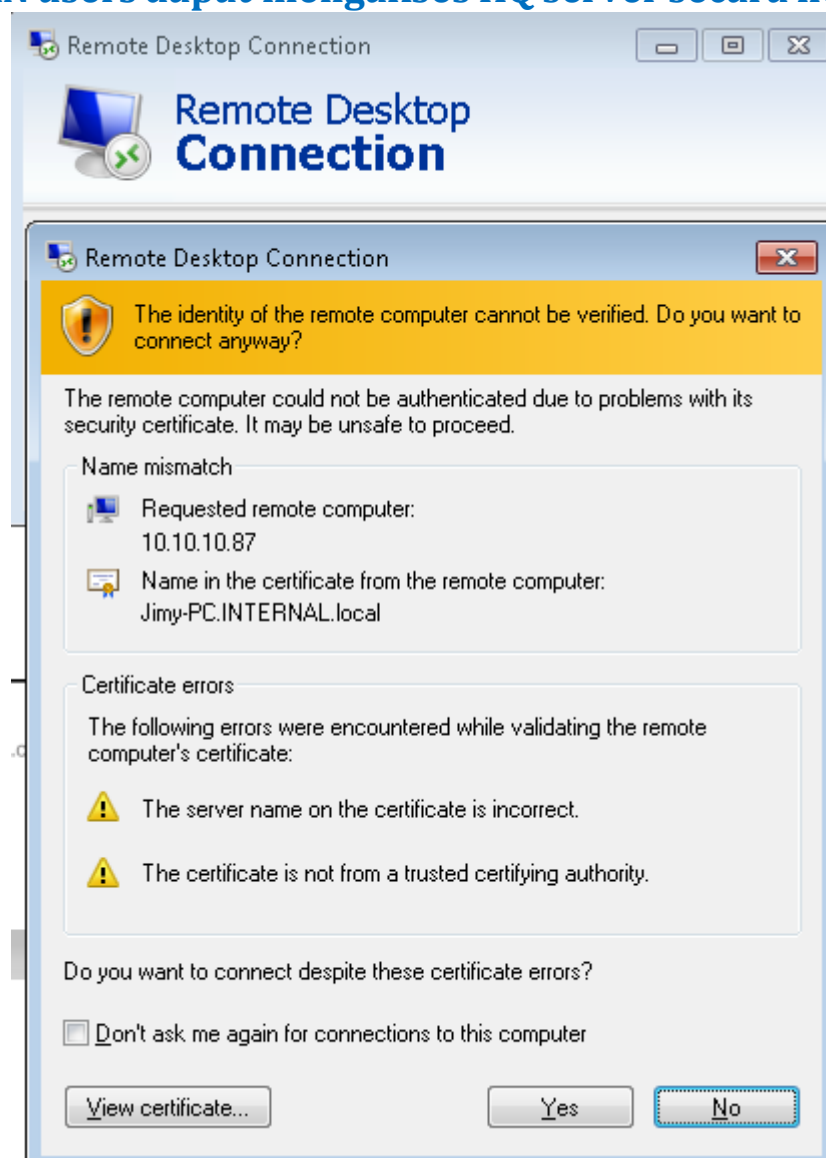
Confirm:

## 3 Hasil Pengujian

### 3.1 PDLAN vpn terhubung berhasil



### 3.2 PDLAN users dapat mengakses HQ server secara normal



## 4 Tindakan Pencegahan

1. Perangkat Sangfor mendukung fungsi yang berbeda di berbagai deployment mode. Perangkat IAM hanya memiliki route deployment yang mendukung fungsi VPN.
2. Versi VPN perangkat di kedua ujung koneksi VPN harus cocok. Versi pdlan yang sesuai tidak boleh salah. Sebagai contoh, versi dlan4.x dapat saling berhubungan dengan versi dlan4.x dan versi dlan5.x, tetapi versi dlan2.x hanya dapat digunakan. Terhubung dengan dlan2.

3. PDLAN download link:

<http://community.sangfor.com/plugin.php?id=service:download&action=tool>





**SANGFOR**

Copyright © SANGFOR Technologies Inc. All rights reserved.

No part of this document may be reproduced or transmitted in any form or by any means without prior written consent of SANGFOR Technologies Inc.

SANGFOR is the trademark of SANGFOR Technologies Inc. All other trademarks and trade names mentioned in this document are the property of their respective holders.

Every effort has been made in the preparation of this document to ensure accuracy of the contents, but all statements, information, and recommendations in this document do not constitute a warranty of any kind, express or implied. The information in this document is subject to change without notice. To obtain the latest version, contact the international service center of SANGFOR Technologies Inc