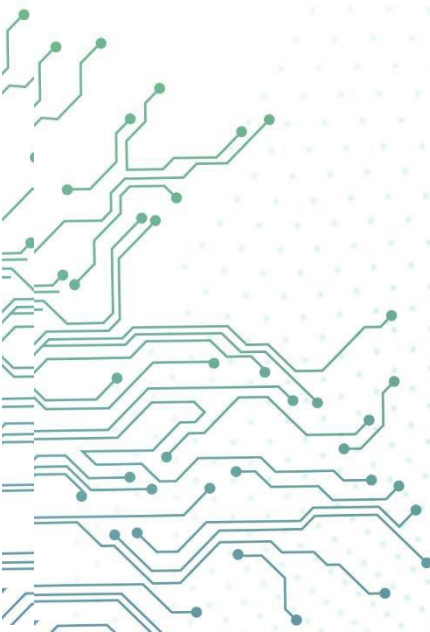




aCloud

Panduan Migrasi Database Oracle

Versi 5.8.8R1



Log Perubahan

Tanggal	Deskripsi Perubahan
9 Oktober, 2019	Rilis Dokumen Versi 5.8.8R1

DAFTAR ISI

Bab 1 Solusi migrasi data database Oracle	1
1.1 Export data database saat ini.....	1
1.2 Bagaimana untuk memeriksa skema database pelanggan saat ini.....	3
2 Membuat VM baru dan instal database Oracle. (Silakan lihat panduan instalasi Oracle.)	5
3 Import database pelanggan (oracle.soe) ke VM baru	5

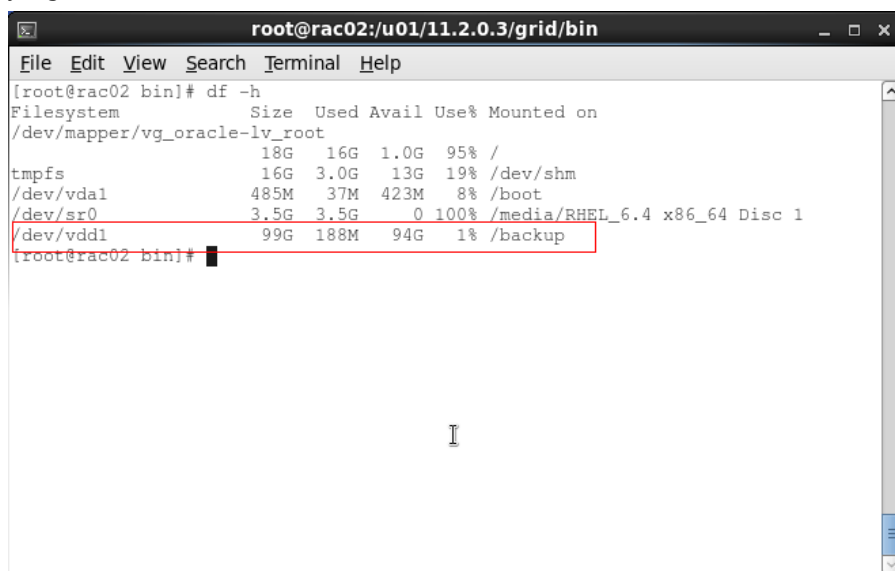
Bab 1 Solusi migrasi data database Oracle

Prinsip dari Solusi:

1. Akses ke pelanggan database produksi saat ini, dan export database sebagai dmp file.
2. Selesai instalasi Oracle VM di aCloud, bersama dengan Oracle Software dan database.
Silakan merujuk ke panduan instalasi Oracle untuk HCI.
3. Salin produksi database dmp file ke Oracle VM baru di aCloud.
4. Import dmp file ke database Oracle VM baru.

1.1 Export database data saat ini.

Mohon pastikan server pelanggan memiliki cukup disk storage. Gambar di bawah ini menunjukkan storage yang tersedia saat ini adalah 94G.



```
root@rac02:/u01/11.2.0.3/grid/bin
File Edit View Search Terminal Help
[root@rac02 bin]# df -h
Filesystem      Size  Used Avail Use% Mounted on
/dev/mapper/vg_oracle-lv_root
18G  16G  1.0G  95% /
tmpfs           16G  3.0G  13G   19% /dev/shm
/dev/vda1       485M   37M  423M   8% /boot
/dev/sr0        3.5G  3.5G   0 100% /media/RHEL_6.4_x86_64_Disc_1
/dev/vddl       99G   188M  94G   1% /backup
[root@rac02 bin]#
```

1. Akses ke akun Oracle dan buat export direktori Command:

su - oracle

sqlplus/assysdba

```

oracle@rac02:~
File Edit View Search Terminal Help
[root@rac02 bin]# df -h
Filesystem      Size  Used Avail Use% Mounted on
/dev/mapper/vg_oracle-lv_root
18G  16G  1.0G  95% /
tmpfs           16G  3.0G  13G   19% /dev/shm
/dev/vda1       485M  37M  423M   8% /boot
/dev/sr0        3.5G  3.5G   0 100% /media/RHEL_6.4 x86_64 Disc 1
/dev/vdd1       99G  188M   94G   1% /backup
[root@rac02 bin]# su - oracle
[oracle@rac02 ~]$ sqlplus / as sysdba

SQL*Plus: Release 11.2.0.4.0 Production on Wed Jun 29 11:30:48 2016

Copyright (c) 1982, 2013, Oracle. All rights reserved.

Connected to:
Oracle Database 11g Enterprise Edition Release 11.2.0.4.0 - 64bit Production
With the Partitioning, Real Application Clusters, Automatic Storage Management,
OLAP,
Data Mining and Real Application Testing options

SQL>

```

Command:

Create directory dump_dir as '/backup';

```

oracle@rac02:~
File Edit View Search Terminal Help
With the Partitioning, Real Application Clusters, Automatic Storage Management,
OLAP,
Data Mining and Real Application Testing options
[oracle@rac02 ~]$
[oracle@rac02 ~]$
[oracle@rac02 ~]$
[oracle@rac02 ~]$ sqlplus / as sysdba

SQL*Plus: Release 11.2.0.4.0 Production on Wed Jun 29 11:32:36 2016

Copyright (c) 1982, 2013, Oracle. All rights reserved.

Connected to:
Oracle Database 11g Enterprise Edition Release 11.2.0.4.0 - 64bit Production
With the Partitioning, Real Application Clusters, Automatic Storage Management,
OLAP,
Data Mining and Real Application Testing options

SQL> create directory dump_dir as '/backup';

Directory created.

SQL>

```

2. Modifikasi permission dari backup direktori untuk membiarkan pengguna Oracle memperoleh read dan write permission.



```
root@rac02:/u01/11.2.0.3/grid/bin
File Edit View Search Terminal Help
[root@rac02 bin]# chown oracle:oinstall /backup/
[root@rac02 bin]# chown oracle:oinstall /backup/ -R
[root@rac02 bin]#
```

3. Jalankan export command.

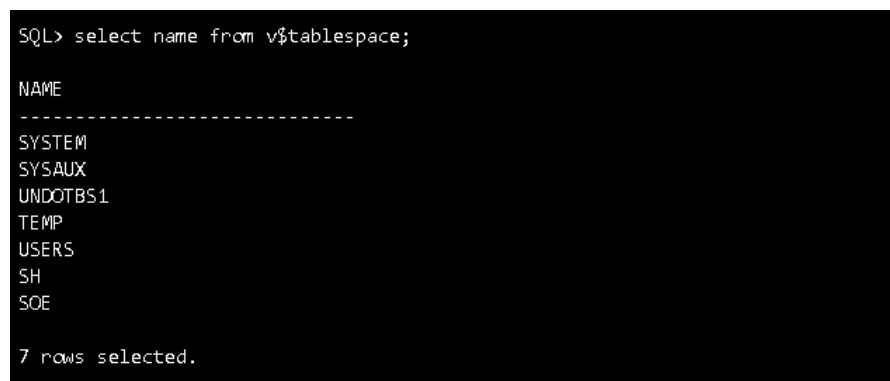
**Expdp system/oracle directory=dump_dir dumpfile=oracle.soe logfile=dump.log
schemas=soe;**

Catatan: "System/oracle" adalah database username& password, it diperlukan untuk modifikasi command sesuai dengan pelanggan.

1.2 Bagaimana untuk memeriksa skema database pelanggan saat ini

Sqlplus /assysdba

Select name from v\$tablespace;



```
SQL> select name from v$tablespace;

NAME
-----
SYSTEM
SYSAUX
UNDOTBS1
TEMP
USERS
SH
SOE

7 rows selected.
```

1. Sesuai screenshot diatas, saat ini, pelanggan memiliki 2 khusus skema yaitu SH dan SOE.

- Parameter skema adalah skema pelanggan sendiri, diperlukan untuk memodifikasi sesuai dengan database aktual pelanggan saat ini.

```

oracle@rac02:/backup
File Edit View Search Terminal Help
[oracle@rac02 backup]$ clear

[oracle@rac02 backup]$ expdp system/oracle directory=dump_dir dumpfile=oracle.soe
e logfile=dump.log schemas=soe;

Export: Release 11.2.0.4.0 - Production on Wed Jun 29 11:47:33 2016

Copyright (c) 1982, 2011, Oracle and/or its affiliates. All rights reserved.

Connected to: Oracle Database 11g Enterprise Edition Release 11.2.0.4.0 - 64bit
Production
With the Partitioning, Real Application Clusters, Automatic Storage Management,
OLAP,
Data Mining and Real Application Testing options
Starting "SYSTEM"."SYS_EXPORT_SCHEMA_01": system/***** directory=dump_dir du
mpfile=oracle.soe logfile=dump.log schemas=soe
Estimate in progress using BLOCKS method...
Processing object type SCHEMA_EXPORT/TABLE/TABLE_DATA
Total estimation using BLOCKS method: 101.0 GB
Processing object type SCHEMA_EXPORT/USER
Processing object type SCHEMA_EXPORT/SYSTEM_GRANT
Processing object type SCHEMA_EXPORT/ROLE_GRANT
Processing object type SCHEMA_EXPORT/DEFAULT_ROLE
Processing object type SCHEMA_EXPORT/TABLESPACE_QUOTA

```

- Exportation selesai

```

oracle@rac02:/backup
File Edit View Search Terminal Help

. . exported "SOE"."ORDER_ITEMS"                26.23 GB 514649879 rows
. . exported "SOE"."ORDERS"                      15.65 GB 185950214 rows
. . exported "SOE"."ADDRESSES"                   13.17 GB 177922222 rows
. . exported "SOE"."CUSTOMERS"                   12.68 GB 116911132 rows
. . exported "SOE"."LOGON"                       8.348 GB 362359391 rows
. . exported "SOE"."CARD_DETAILS"                 7.335 GB 166911132 rows
. . exported "SOE"."INVENTORIES"                 15.23 MB 899470 rows
. . exported "SOE"."ORDERENTRY_METADATA"         5.546 KB 4 rows
. . exported "SOE"."PRODUCT_DESCRIPTIONS"        221.7 KB 1000 rows
. . exported "SOE"."PRODUCT_INFORMATION"         187.5 KB 1000 rows
. . exported "SOE"."WAREHOUSES"                  36.19 KB 1000 rows
Master table "SYSTEM"."SYS_EXPORT_SCHEMA_01" successfully loaded/unloaded
*****
Dump file set for SYSTEM.SYS_EXPORT_SCHEMA_01 is:
/backup/oracle.soe
Job "SYSTEM"."SYS_EXPORT_SCHEMA_01" successfully completed at Wed Jun 29 12:21:3
8 2016 elapsed 0 00:34:04

[oracle@rac02 backup]$
[oracle@rac02 backup]$
[oracle@rac02 backup]$
[oracle@rac02 backup]$

```

4. Periksa file yang di export, ini menunjukkan export berhasil.

```

oracle@rac02:/backup
File Edit View Search Terminal Help
. . exported "SOE"."PRODUCT_DESCRIPTIONS"          221.7 KB    1000 rows
. . exported "SOE"."PRODUCT_INFORMATION"          187.5 KB    1000 rows
. . exported "SOE"."WAREHOUSES"                   36.19 KB    1000 rows
Master table "SYSTEM"."SYS_EXPORT_SCHEMA_01" successfully loaded/unloaded
*****
Dump file set for SYSTEM.SYS_EXPORT_SCHEMA_01 is:
/backup/oracle.soe
Job "SYSTEM"."SYS_EXPORT_SCHEMA_01" successfully completed at Wed Jun 29 12:21:3
8 2016 elapsed 0 00:34:04

[oracle@rac02 backup]$
[oracle@rac02 backup]$
[oracle@rac02 backup]$
[oracle@rac02 backup]$
[oracle@rac02 backup]$ ls
dump.log lost+found oracle.soe
[oracle@rac02 backup]$ ls -alht
total 84G
-rw-r----- 1 oracle asmadmin 84G Jun 29 12:21 oracle.soe
-rw-r----- 1 oracle asmadmin 3.1K Jun 29 12:21 dump.log
drwxr-xr-x 3 oracle oinstall 4.0K Jun 29 11:47 .
drwx----- 2 oracle oinstall 16K Jun 29 11:25 lost+found
dr-xr-xr-x. 29 root root 4.0K Jun 29 11:23 ..
[oracle@rac02 backup]$

```

2 Membuat VM baru dan instal database Oracle. (Silakan lihat panduan instalasi Oracle.)

3 Import database pelanggan (oracle.soe) ke VM baru

1. Buat backup direktori pada Oracle VM baru. Setelah itu, salin file yang di export (Oracle.soe) ke dalam yang baru Oracle VM backup direktori. Selanjutnya, modifikasi file permission: **chmod 775 oracle.soe**
2. Gunakan akun pengguna Oracle untuk menjalankan backup direktori permission.

Command: **chown oracle:oinstall /backup -R**

```

oracle@rac02:/backup
File Edit View Search Terminal Help
[oracle@rac02 backup]$ chown oracle:oinstall /backup/ -R
[oracle@rac02 backup]$

```

3. Periksa database status saat ini, apakah dalam status "Open".

Su - oracle

Sqlplus / asysdba

Select status from v\$instance


```

oracle@rac02:/backup
File Edit View Search Terminal Help
[oracle@rac02 backup]$ chown oracle:oinstall /backup/ -R
[oracle@rac02 backup]$ sqlplus / as sysdba

SQL*Plus: Release 11.2.0.4.0 Production on Wed Jun 29 17:27:43 2016

Copyright (c) 1982, 2013, Oracle. All rights reserved.

Connected to:
Oracle Database 11g Enterprise Edition Release 11.2.0.4.0 - 64bit Production
With the Partitioning, Real Application Clusters, Automatic Storage Management,
OLAP,
Data Mining and Real Application Testing options

SQL> select status from v$instance;

STATUS
-----
OPEN

SQL>

```

4. Jika database dalam status “open”, Anda dapat import data melalui impdp.

```

oracle@oracle:~
File Edit View Search Terminal Help
-rw-r-----. 1 root root 41G Jun 29 18:37 oracle.soe
drwxr-xr-x. 3 root root 4.0K Jun 29 18:21 .
dr-xr-xr-x. 29 root root 4.0K Jun 29 17:43 ..
drwx-----. 2 root root 16K Jun 29 17:33 lost+found
[root@oracle backup]# ls
lost+found oracle.soe
[root@oracle backup]# su - oracle
[oracle@oracle ~]$ sqlplus / as sysdba

SQL*Plus: Release 11.2.0.4.0 Production on Wed Jun 29 21:17:46 2016

Copyright (c) 1982, 2013, Oracle. All rights reserved.

Connected to:
Oracle Database 11g Enterprise Edition Release 11.2.0.4.0 - 64bit Production
With the Partitioning, Automatic Storage Management, OLAP, Data Mining
and Real Application Testing options

SQL> create tablespace soe;

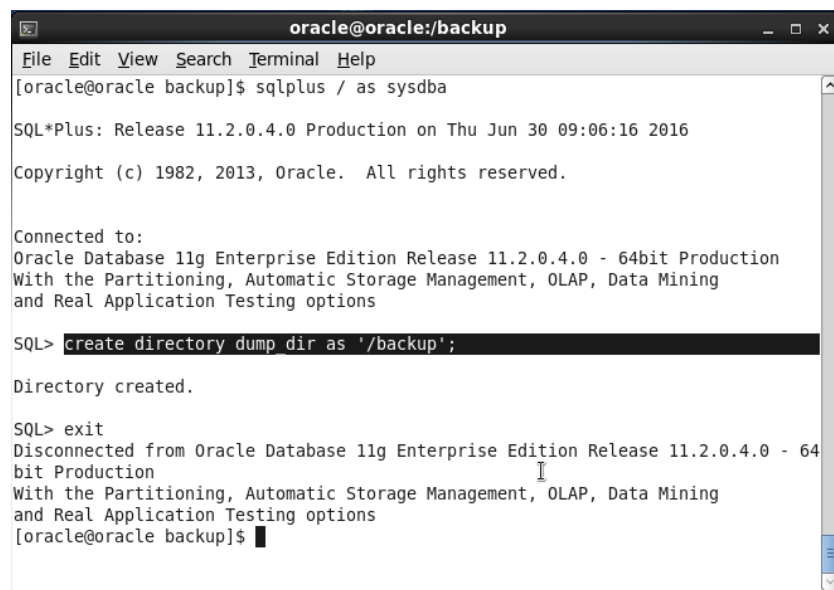
Tablespace created.

SQL>

```

5. Buat dump_dir

Command: **Create directory dump_dir as '/backup';**



```

oracle@oracle:/backup
File Edit View Search Terminal Help
[oracle@oracle backup]$ sqlplus / as sysdba

SQL*Plus: Release 11.2.0.4.0 Production on Thu Jun 30 09:06:16 2016

Copyright (c) 1982, 2013, Oracle. All rights reserved.

Connected to:
Oracle Database 11g Enterprise Edition Release 11.2.0.4.0 - 64bit Production
With the Partitioning, Automatic Storage Management, OLAP, Data Mining
and Real Application Testing options

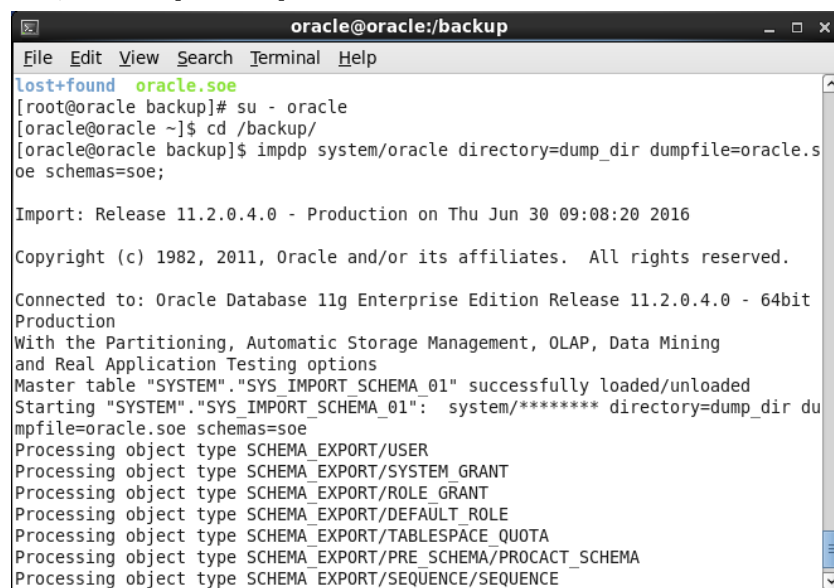
SQL> create directory dump_dir as '/backup';

Directory created.

SQL> exit
Disconnected from Oracle Database 11g Enterprise Edition Release 11.2.0.4.0 - 64
bit Production
With the Partitioning, Automatic Storage Management, OLAP, Data Mining
and Real Application Testing options
[oracle@oracle backup]$

```

6. Jalankan operasi import.



```

oracle@oracle:/backup
File Edit View Search Terminal Help
lost+found oracle.soe
[root@oracle backup]# su - oracle
[oracle@oracle ~]$ cd /backup/
[oracle@oracle backup]$ impdp system/oracle directory=dump_dir dumpfile=oracle.s
oe schemas=soe;

Import: Release 11.2.0.4.0 - Production on Thu Jun 30 09:08:20 2016

Copyright (c) 1982, 2011, Oracle and/or its affiliates. All rights reserved.

Connected to: Oracle Database 11g Enterprise Edition Release 11.2.0.4.0 - 64bit
Production
With the Partitioning, Automatic Storage Management, OLAP, Data Mining
and Real Application Testing options
Master table "SYSTEM"."SYS_IMPORT_SCHEMA_01" successfully loaded/unloaded
Starting "SYSTEM"."SYS_IMPORT_SCHEMA_01": system/***** directory=dump_dir du
mpfile=oracle.soe schemas=soe
Processing object type SCHEMA_EXPORT/USER
Processing object type SCHEMA_EXPORT/SYSTEM GRANT
Processing object type SCHEMA_EXPORT/ROLE GRANT
Processing object type SCHEMA_EXPORT/DEFAULT ROLE
Processing object type SCHEMA_EXPORT/TABLESPACE_QUOTA
Processing object type SCHEMA_EXPORT/PRE_SCHEMA/PROCACT_SCHEMA
Processing object type SCHEMA_EXPORT/SEQUENCE/SEQUENCE

```



SANGFOR

Hak cipta (c) Sangfor Technologies Inc. Hak cipta dilindungi oleh undang-undang. Dilarang menyebarkan atau memproduksi ulang sebagian dari atau seluruh dokumen ini tanpa persetujuan tertulis dari Sangfor Technologies Inc.

SANGFOR adalah merek dagang dari Sangfor Technologies Inc. Semua merek dagang dan nama dagang lain yang disebutkan dalam dokumen ini adalah milik dari pemegangnya masing-masing.

Segala upaya telah dilakukan dalam mempersiapkan dokumen ini untuk memastikan keakuratan konten, namun semua pernyataan, informasi, dan rekomendasi dalam dokumen ini bukan merupakan jaminan dalam bentuk apa pun, tersurat maupun tersirat. Informasi dalam dokumen ini dapat berubah tanpa pemberitahuan. Untuk mendapatkan versi terbaru, hubungi pusat layanan internasional SANGFOR Technologies Inc.