



# HCI

## Panduan Deployment Sederhana



## Perubahan Catatan

Tanggal	Deskripsi Perubahan
Dec 30, 2020	Bahasa version release.

# Daftar Isi

Chapter 1 Deployment.....	1
1 Target.....	1
2 Topologi 2 server HCI.....	1
3 Masuk ke HCI.....	1
4 Buat cluster.....	2
5 Mengkonfigure storage.....	5
6 Membuat virtual machine.....	8
7 Gambar Topologi Sederhana.....	11

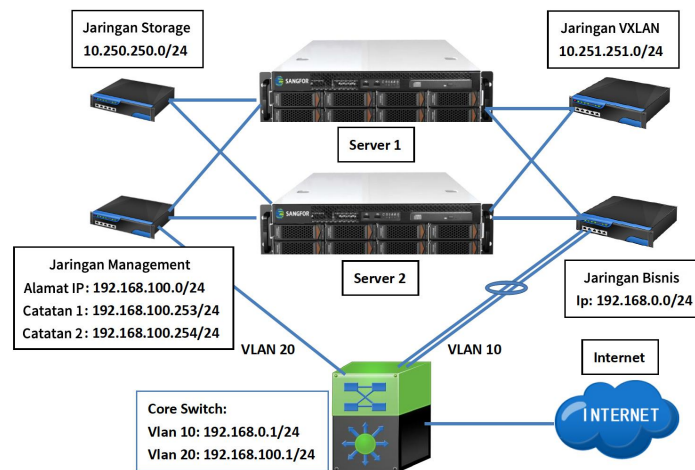
# Chapter 1 Deployment

## 1 Target

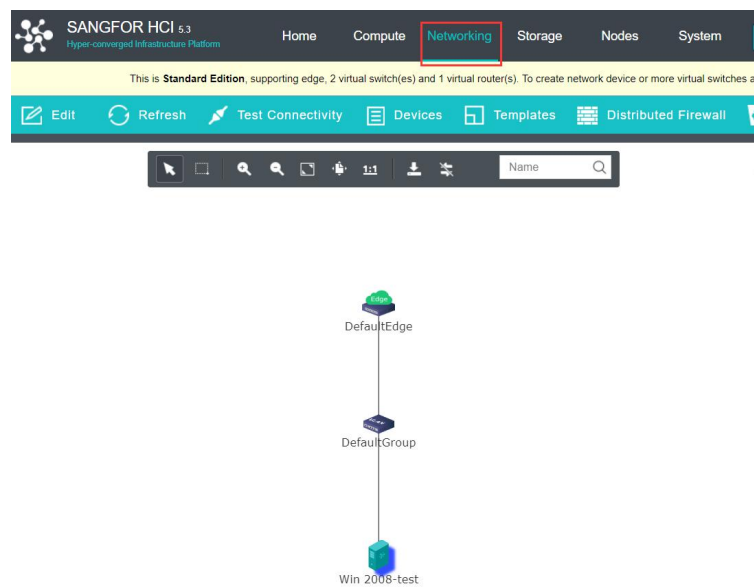
1. Deploy lingkungan poc.
2. Hot add CPU dan memori ke VM.
3. Backup vMs ke sistem Windows menggunakan file sharing
4. High availability.

## 2 Topologi 2 server HCI

1. Topologi Fisik.



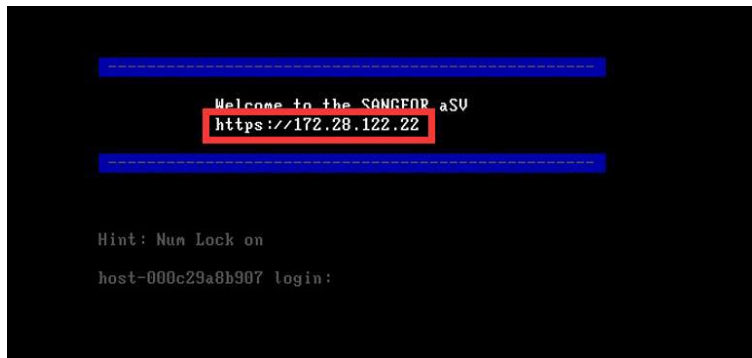
2. Topology logic untuk jaringan bisnis.



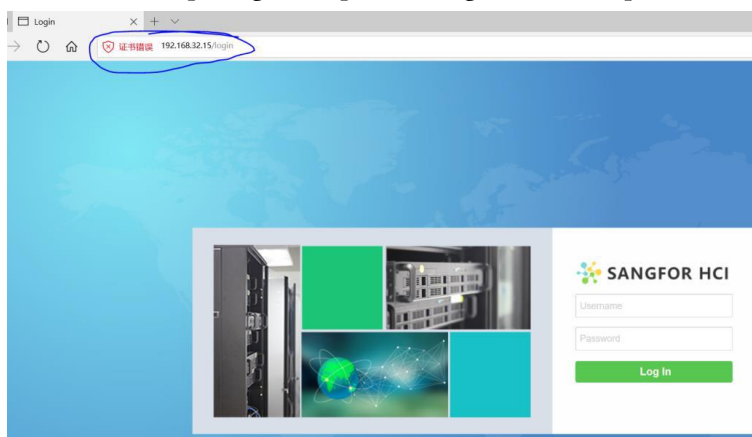
## 3 Masuk ke HCI

1. Pasang monitor ke HCI, kemudian Anda dapat melihat alamat ip server HCI. IP ini untuk port NIC

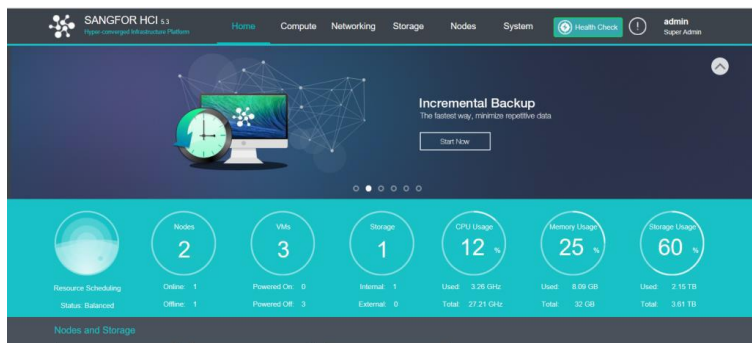
pertama (eth0) dari server HCI.



2. Buka browser dan masukkan ip dengan 'https://'. Sebagai contoh <https://192.168.32.15>



3. Masukan username dan password. Default username dan password adalah 'admin'.



## 4 Buat cluster

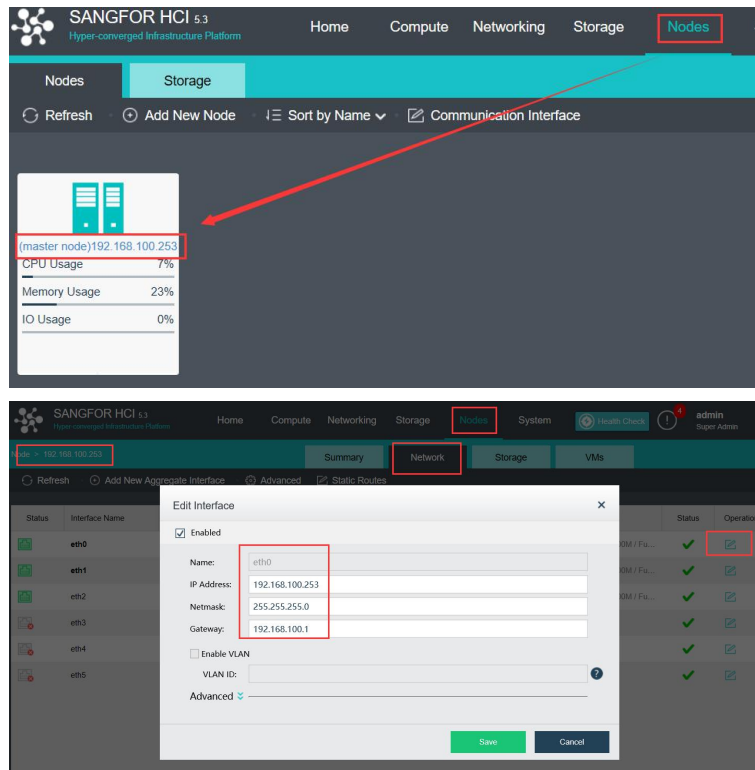
Sebelum deployment:

Jaringan Manajemen: eth0. alamat ip range: 192.168.1.0/24

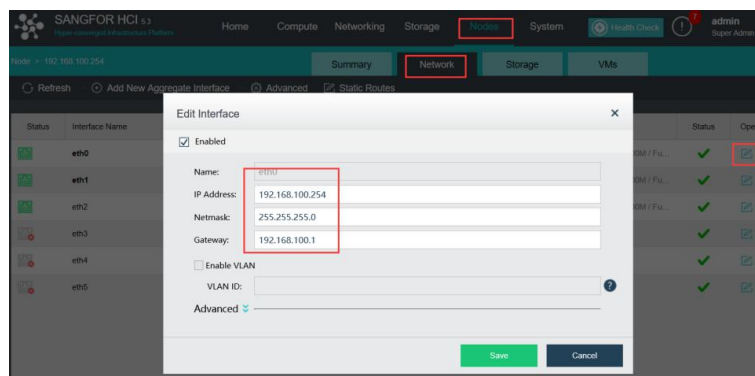
Jaringan Bisnis: eth1 dan eth2, aggregate port. Alamat ip range: 192.168.0.0/24 Jaringan Storage: eth3, Alamat ip range: 10.250.250.0/24

Jaringan VXLAN: eth4, Alamat ip range: 10.251.251.0/24

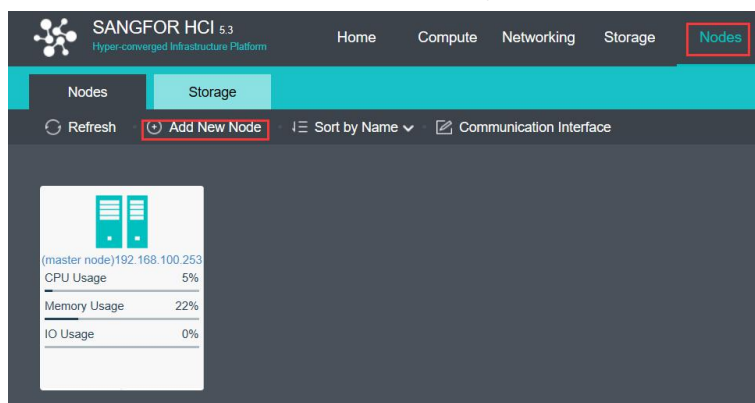
1. Hubungkan 2 server sebagaimana topologi fisik.
2. Ubah eth0 alamat ip, server 1: 192.168.100.253/24, server 2: 192.168.1.54/24. Dan gateway adalah 192.168.100.1. Path: Nodes-> Click Details-> Network.



Lakukan pada node lainnya.



3. Tambahkan Node dari Node mana saja. Nodes->Add New Node.



Alamat IP cluster awal: IP Addr: 192.168.100.252; Mask: 255.255.255.0; Gateway: 192.168.100.1.

**New Node** [X]

**Cluster** [X]

Specify cluster IP address.

Cluster IP address is a virtual IP address specified by Sangfor HCI software for a given cluster, to achieve unified access and management. [Read More](#)

Cluster IP:

Netmask:

Cluster Name:

1/2

Kemudian Anda dapat melihat node, Jika jaringan yang sama memiliki server HCI lain.

**New Node**

**Select and Connect to the Physical Machine** [Download Sangfor HCI Installer](#)

Below are nodes having Sangfor HCI software installed. Default password: admin

**Credentials**

192.168.100.254

Masukan administrator password.

**New Node** [X]

**Select and Connect to the Physical Machine** [Download Sangfor HCI Installer](#)

Below are nodes having Sangfor HCI software installed. Default password: admin

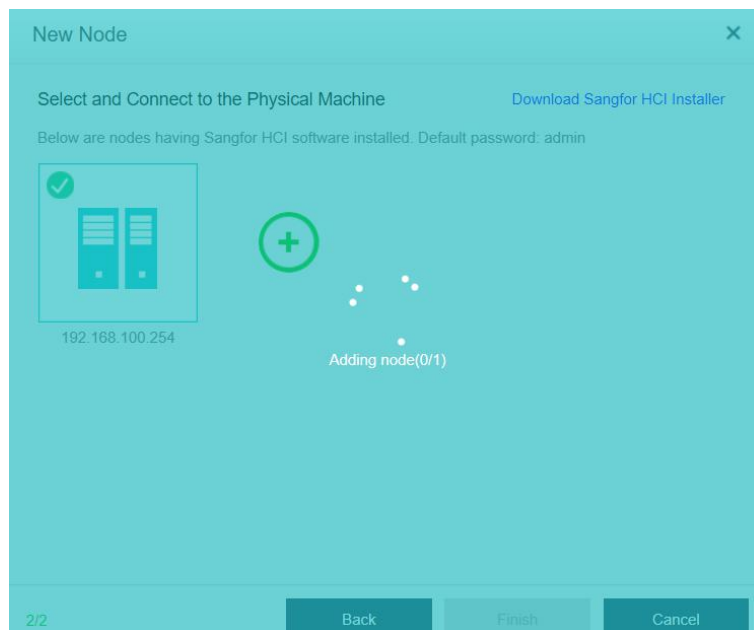
**Credentials**

192.168.100.254

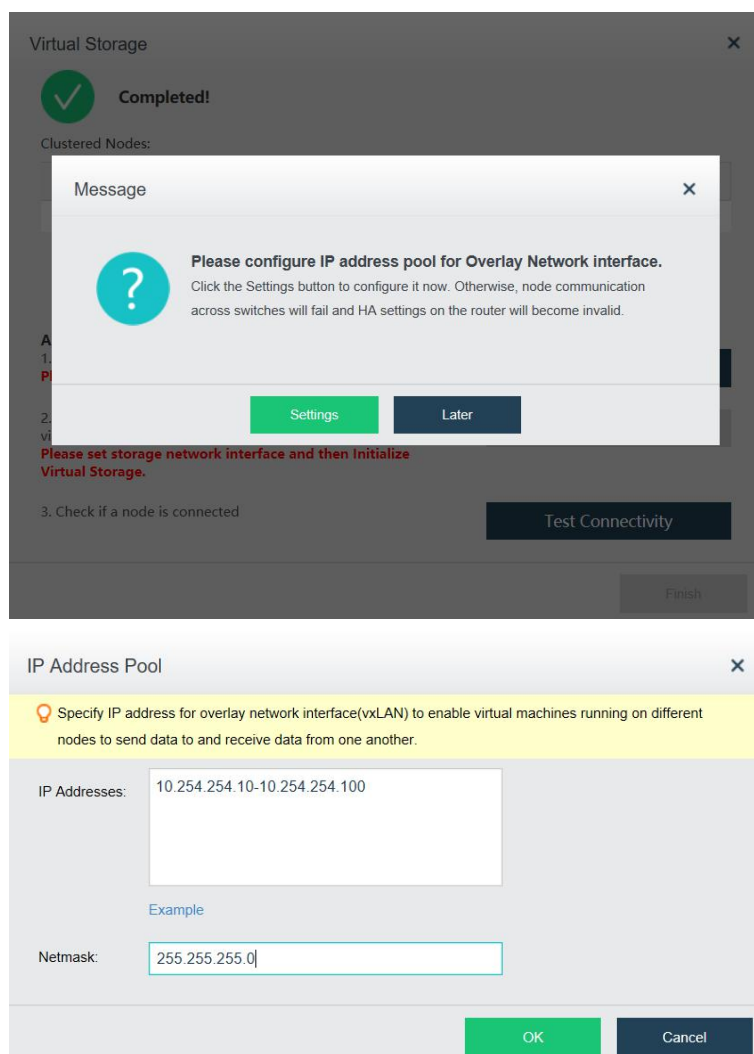
**Connect to Node**

Username:

Password:



#### 4. Konfigurasi vxLAN.



## 5 Mengkonfigure storage



## 1. Konfigurasi Storage. Tentukan interface untuk jaringan storage.

Virtual Storage

✓

Completed!

Clustered Nodes:

Node Name	IP Address	Disk(s)	NICs
192.168.100.253	192.168.100.253	3	6
192.168.100.254	192.168.100.254	3	6

Additional Preparations:

1. Deploy storage area network to ensure storage stability

Please set storage network interface first.

2. Initialize virtual storage, format physical disk and add to virtual storage

Please set storage network interface and then Initialize Virtual Storage.

3. Check if a node is connected

Settings

Initialize Virtual Storage

Test Connectivity

1 Storage Deployment

2 Select Storage Network Interface

Deployment Mode (for data communication between physical disks in the storage area network)

Link aggregation disabled

Link aggregation with one switch(Recommended)

Link aggregation with two switches

Internet

SWITCH

SWITCH

Storage Area Network

Link aggregation disabled

Benefits

Independent storage area network is higher in stability.

Drawbacks

Storage on the node will be inaccessible if one link fails.

Notes:

Storage area network(SAN) is used for data transmission across nodes. Please connect the objects with cables according to the diagram.

The switch may be layer 2 switch, requiring no change be made.

If there are only two nodes, simply use a cable to connect one another, without using any switch.

1/2

Next

Cancel

Use of Physical Interfaces

1 Storage Deployment

2 Select Storage Network Interface

Storage Network Interface (Deployment)

Node Name	Physical Interface	Interface IP	Status
192.168.100.253	eth2	10.251.251.1 / 24	✓ Normal
192.168.100.254	eth2	10.251.251.2 / 24	✓ Normal

## 2. Inisialisasi Virtual Storage.

W.: [www.sangfor.com](http://www.sangfor.com) | W.: [community.sangfor.com](http://community.sangfor.com) | E.: [tech.support@sangfor.com](mailto:tech.support@sangfor.com)

6

Virtual Storage

**Completed!**

Clustered Nodes:

Node Name	IP Address	Disk(s)	NICs
192.168.100.253	192.168.100.253	3	6
192.168.100.254	192.168.100.254	3	6

**Additional Preparations:**

1. Deploy storage area network to ensure storage stability  
**Selected: Link aggregation disabled**

Change Network Settings
2. Initialize virtual storage, format physical disk and add to virtual storage  

Initialize Virtual Storage
3. Check if a node is connected  

Test Connectivity

Finish

Initialize Virtual Storage

1 Data Copies — 2 Use of Disk — 3 Details — 4 Confirm

**Data Copies**

The number of copies that one piece of data is saved on the storage.

It is to reduce the risk of inaccessibility to data when disk failure occurs. The more copies, the easier to recover data from other disks in case failure occurs. But the more copies, the more physical disk space is required, thus less space is left.

☒ **2\_copy (2 copies)**  
2 copies will be preserved. If there are more than one node, it can cope with failure of another node.

☐ **3\_copy (3 copies)**  
3 copies will be preserved. It can cope with failure of two nodes, if there are at least 3 nodes.

After initialization, number of copies cannot be changed any more.

1/4

Next

Cancel

3. Untuk spare disk, sesuaikan dengan kebutuhan pengguna.

Initialize Virtual Storage

1 Data Copies — 2 Use of Disk — 3 Details — 4 Confirm

**Use of Disk**

Use of disks falls into there categories

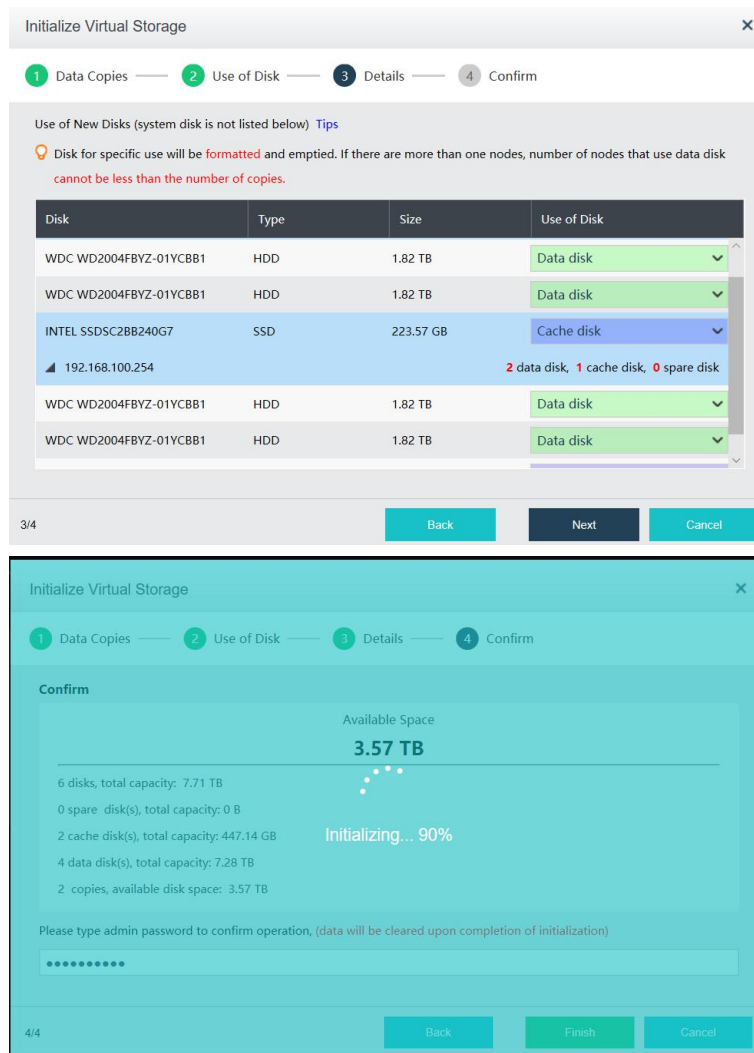
**Data disk:** Used to store disk data files of virtual machine and create virtual disk.

**Cache disk:** Used for caching, to improve performance of virtual storage. SSD often works like cache disk.

**Spare disk:** Used as backup of data disk on virtual storage, and is always ready to replace the data disk when it fails. Once the failed disk recovers, it returns to spare disk.

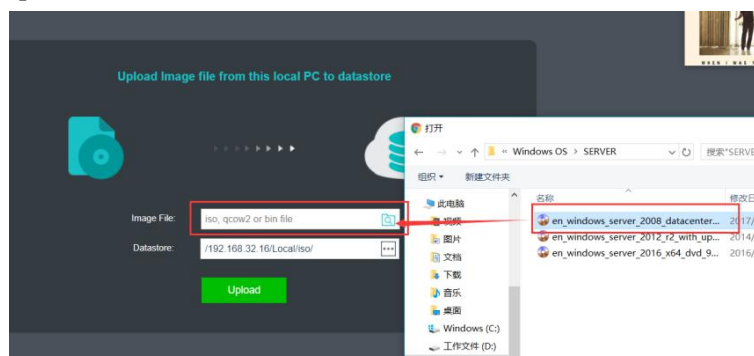
☐ **Spare disk**  
Number of recommended spare disks will be the same as copies. You may change the numbers respectively in the next step.

4. Pilih Cache disk dan data disk. Hanya SSD yang dapat menjadi Cache disk.

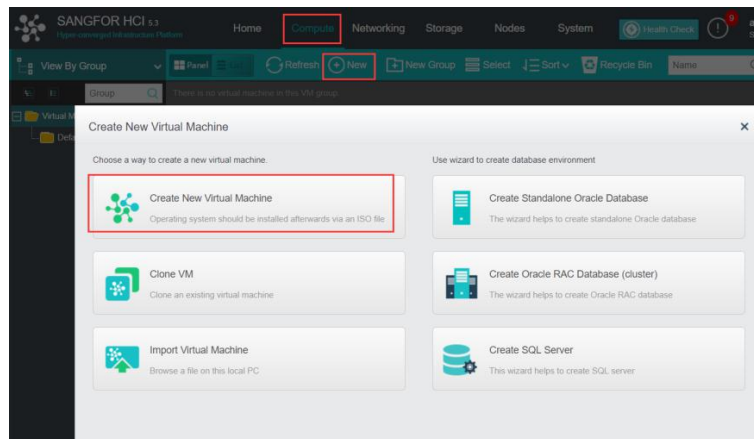


## 6 Membuat virtual machine

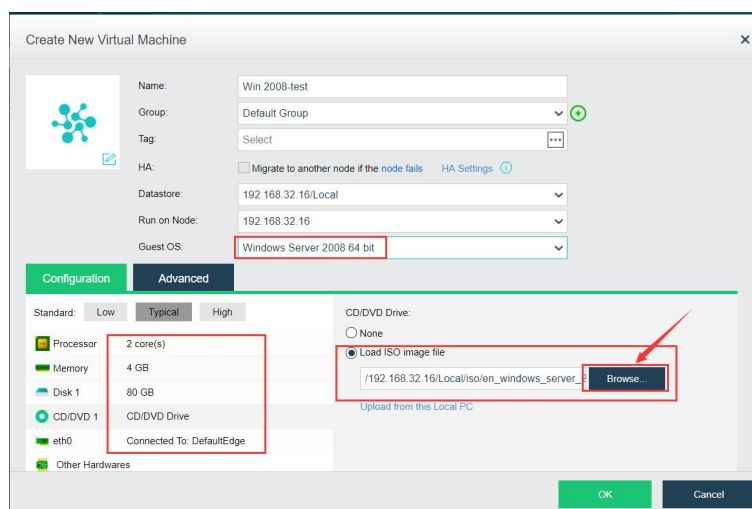
1. Unggah file ISO sistem ke cluster. Path: Storage-> Manage -> upload. Kemudian pilih file ISO lokal dan unggah ke platform HCI.



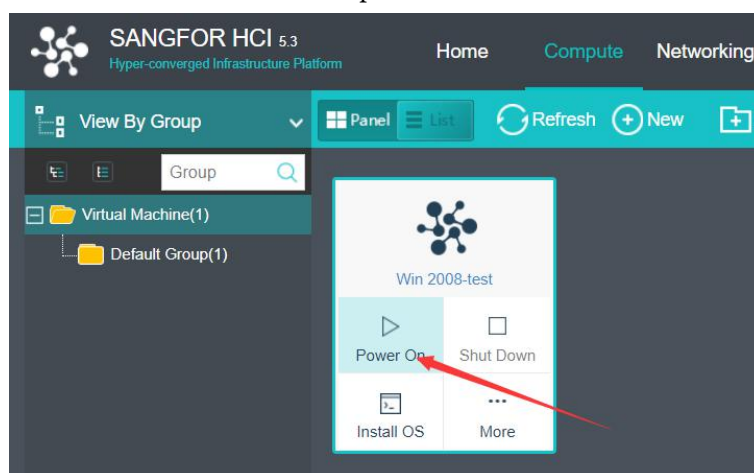
2. Pergi ke Compute-> New-> Create New Virtual Machine.



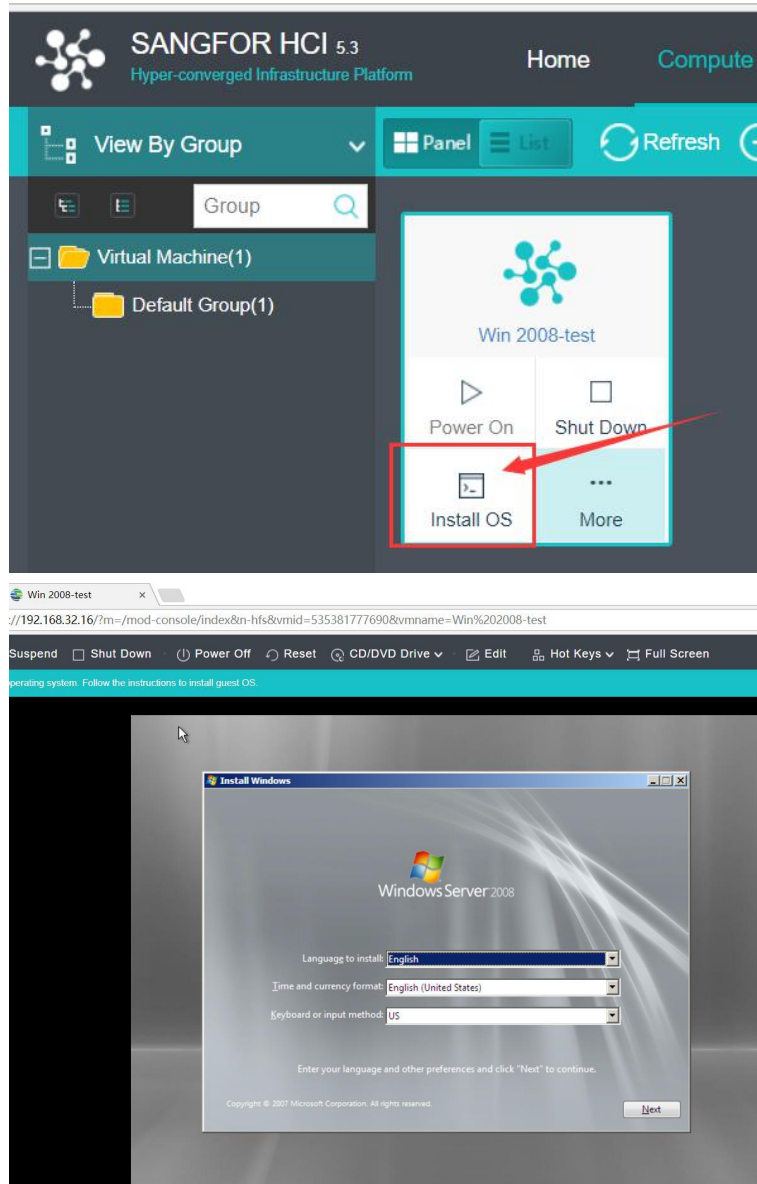
3. Masukkan nama dan edit spesifikasi perangkat keras, kemudian pilih sistem operasi dan file ISO sistem operasi.



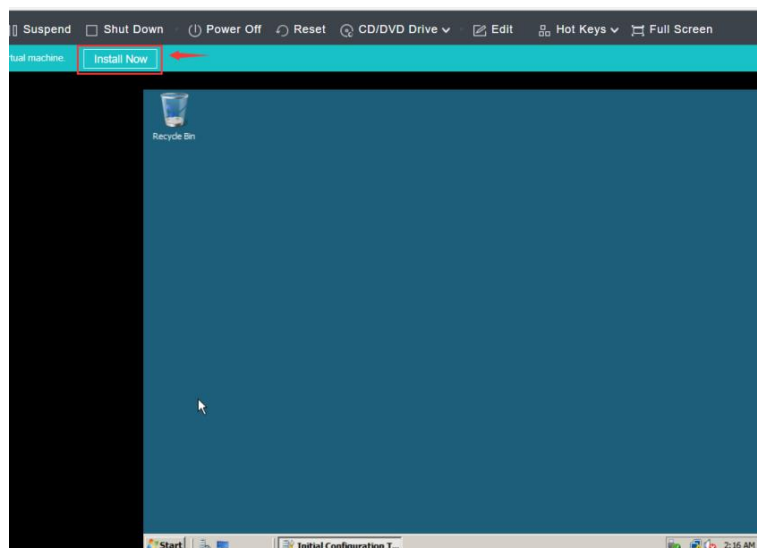
4. Nyalakan virtual machine dan instal sistem operasi.

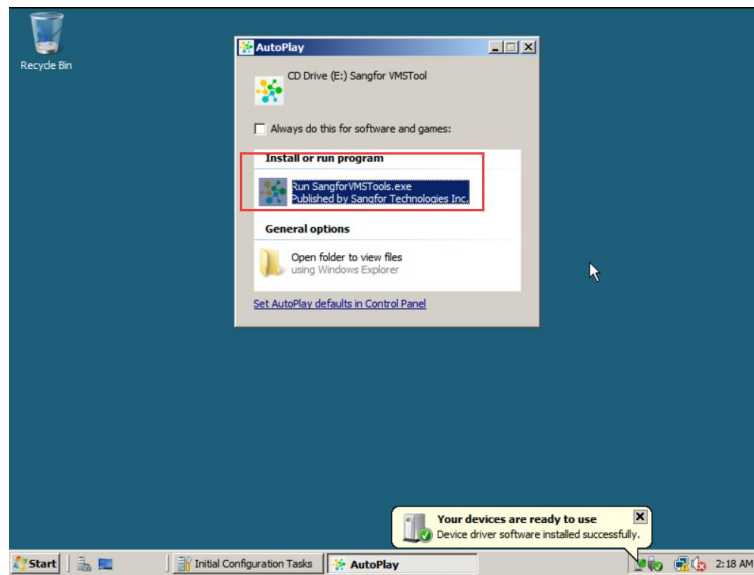


5. Klik Install OS dan instal sistem seperti komputer normal.

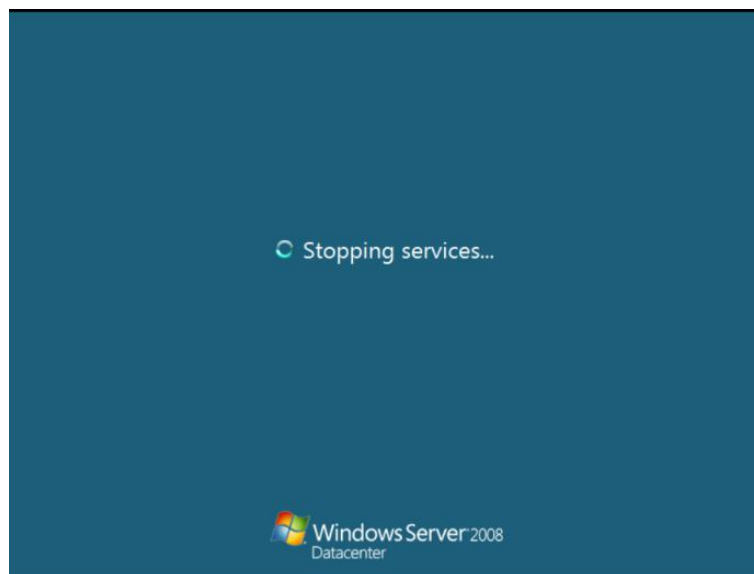


6. Setelah menginstal sistem, kita perlu install vmtools ke VM. Lalu kita bisa menggunakannya. Klik "Install now".

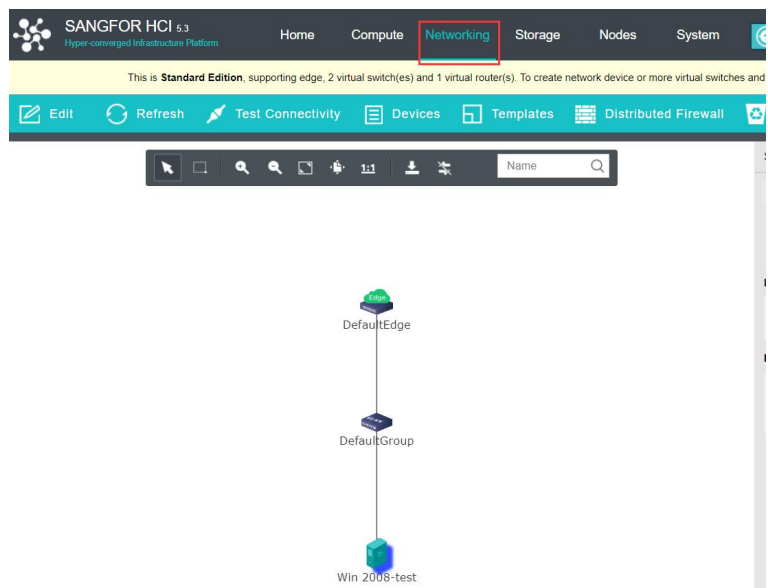




Restart kemudian selesai instal vmtools.



## 7 Gambar Topologi Sederhana





Hak cipta (c) Sangfor Technologies Inc. Hak cipta dilindungi oleh undang-undang. Dilarang menyebarkan atau memproduksi ulang sebagian dari atau seluruh dokumen ini tanpa persetujuan tertulis dari Sangfor Technologies Inc. SANGFOR adalah merek dagang dari Sangfor Technologies Inc. Semua merek dagang dan nama dagang lain yang disebutkan dalam dokumen ini adalah milik dari pemegangnya masing-masing. Segala upaya telah dilakukan dalam mempersiapkan dokumen ini untuk memastikan keakuratan konten, namun semua pernyataan, informasi, dan rekomendasi dalam dokumen ini bukan merupakan jaminan dalam bentuk apa pun, tersurat maupun tersirat. Informasi dalam dokumen ini dapat berubah tanpa pemberitahuan. Untuk mendapatkan versi terbaru, hubungi pusat layanan internasional SANGFOR Technologies Inc.

