



SANGFOR

SANGFOR_NGAF_v7.4_ Connection Control Configuration



SANGFOR Technologies Inc.

29th November 2017

Your Future-Proof IT Enabler

Sangfor Technologies

Block A1, Nanshan iPark, No.1001 Xueyuan Road, Nanshan District, Shenzhen, China

T.: +86 755 2654 8888 (7511) | E.: tech.support@sangfor.com | W.: www.sangfor.com



Declaration

Copyright © SANGFOR Technologies Inc. All rights reserved.

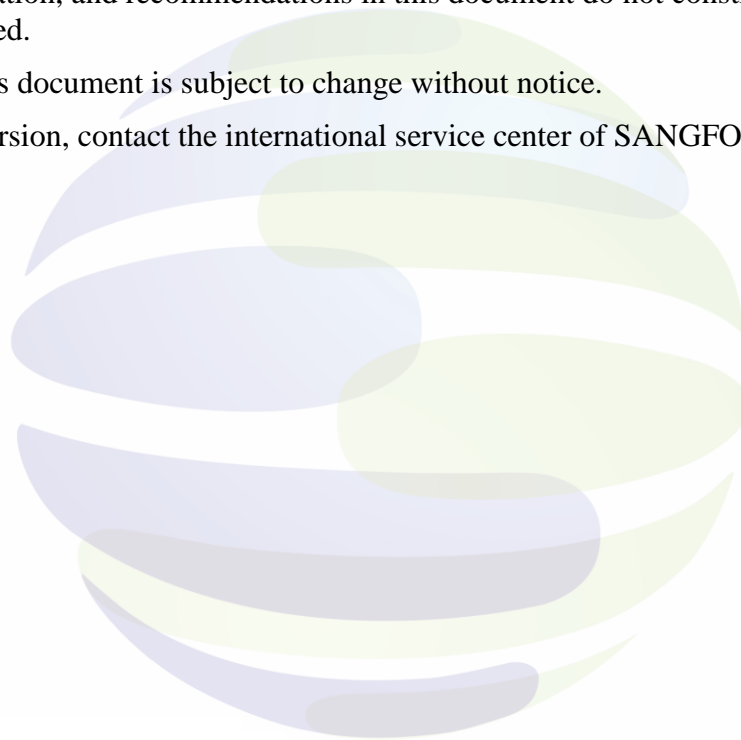
No part of this document may be reproduced or transmitted in any form or by any means without prior written consent of SANGFOR Technologies Inc.

SANGFOR, SINFOR and  logo are the trademarks of SANGFOR Technologies Inc. All other trademarks and trade names mentioned in this document are the property of their respective holders.

Every effort has been made in the preparation of this document to ensure accuracy of the contents, but all statements, information, and recommendations in this document do not constitute a warranty of any kind, express or implied.

The information in this document is subject to change without notice.

To obtain the latest version, contact the international service center of SANGFOR Technologies Inc.



Your Future-Proof IT Enabler

Sangfor Technologies

Block A1, Nanshan iPark, No.1001 Xueyuan Road, Nanshan District, Shenzhen, China

T.: +60 12711 7129 (7511) | E.: tech.support@sangfor.com | W.: www.sangfor.com



Table of contents

Declaration	2
Table of contents	3
1 Introduction	4
1.1 Abbreviations and conventions	4
1.2 Feedback	4
2 Scenario	4
3 Configuration Steps	4
3.1 Source IP-based Connection Control	5
3.2 Destination IP-Based Connection Control	6
3.3 Bidirectional IP-based connection control	7
4 Precautions	9

Your Future-Proof IT Enabler

Sangfor Technologies

Block A1, Nanshan iPark, No.1001 Xueyuan Road, Nanshan District, Shenzhen, China

T.: +60 12711 7129 (7511) | E.: tech.support@sangfor.com | W.: www.sangfor.com



1 Introduction

1.1 Abbreviations and conventions

AF in this article refers to the SANGFOR NGAF device.

1.2 Feedback

If you find any questions of this documents, please feel free to give us feedback, email: tech.support@sangfor.com.

2 Scenario

Connection control is used to specify the maximum number of connection for each IP address. The connection control is divided into *Source IP-based connection control*, *Destination IP-based connection control* and *Bidirectional IP-based connection control*.

- i. **Source IP-based connection control:** When an intranet user downloads content in P2P mode or a computer on the intranet is infected by a virus, there may be many connections set up in a short period. This will affect the device performance. Henceforth, set the Source IP-based connection control to limit the maximum number of connections allowed for each IP address which can help to reduce network resource usage.
- ii. **Destination IP-based connection control:** It specifies the maximum number of connection allowed for each destination IP address.
- iii. **Bidirectional IP-based connection control:** It specifies the maximum number of connection allowed for both source and destination IP address.

3 Configuration Steps

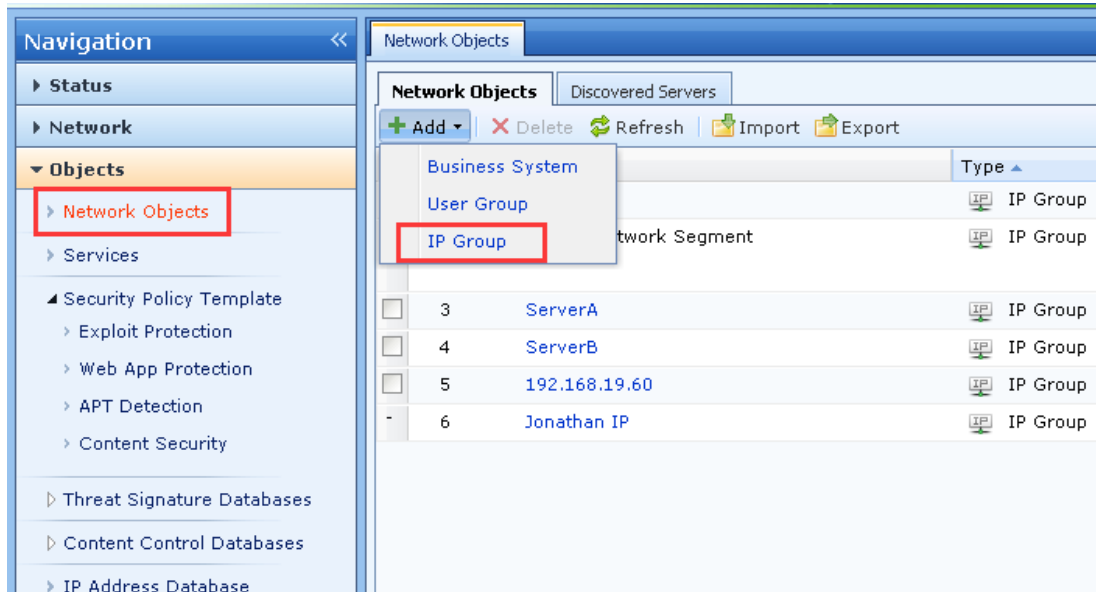
- i. In **Object > Network Object > Add > IP Group** to create a new IP group.

Your Future-Proof IT Enabler

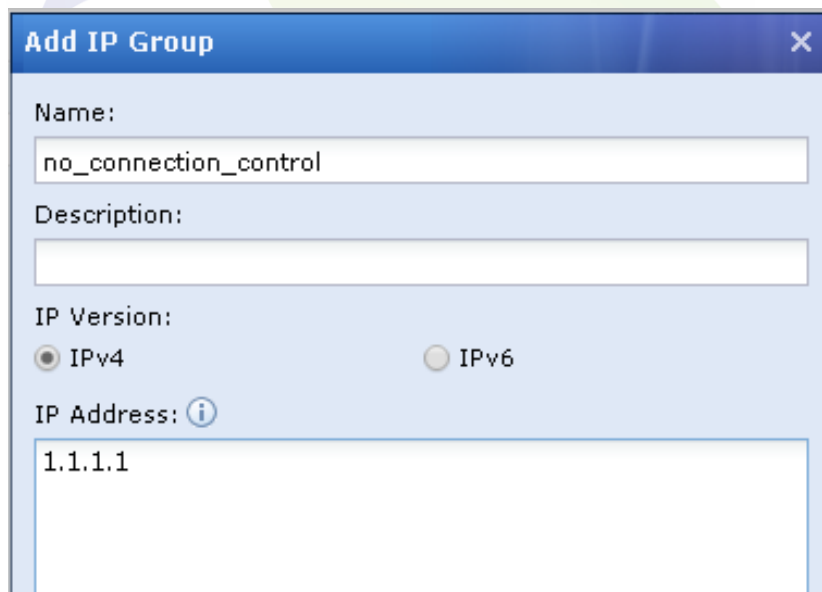
Sangfor Technologies

Block A1, Nanshan iPark, No.1001 Xueyuan Road, Nanshan District, Shenzhen, China

T.: +60 12711 7129 (7511) | E.: tech.support@sangfor.com | W.: www.sangfor.com



- ii. Enter IP address which is needed to control into **IP Group** and save the configuration.



Add IP Group

Name: no_connection_control

Description:

IP Version: ☒ IPv4 ☐ IPv6

IP Address: 1.1.1.1

3.1 Source IP-based Connection Control

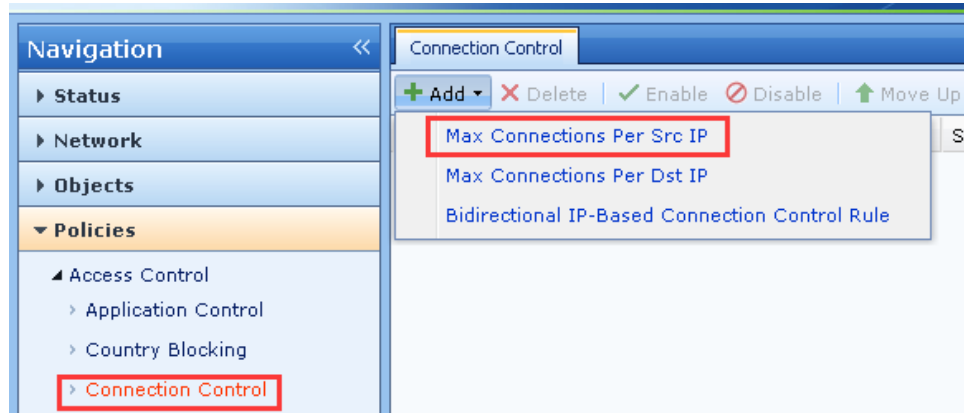
- i. In Policies > Connection Control > Max Connections Per Src IP to add a new source IP-based connection control.

Your Future-Proof IT Enabler

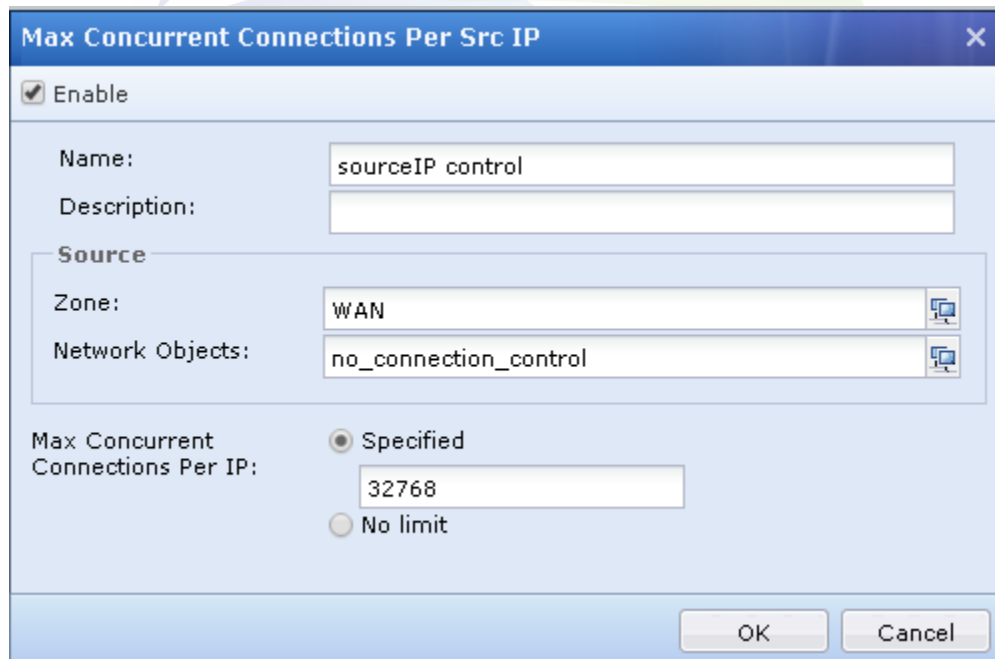
Sangfor Technologies

Block A1, Nanshan iPark, No.1001 Xueyuan Road, Nanshan District, Shenzhen, China

T.: +60 12711 7129 (7511) | E.: tech.support@sangfor.com | W.: www.sangfor.com



- **Source Zone:** Select the corresponding zone for limiting.
- **Network Objects:** Select the target object.
- **Max Concurrent Connections Per IP:** Set up the maximum number of concurrent connection for each IP address.



3.2 Destination IP-Based Connection Control

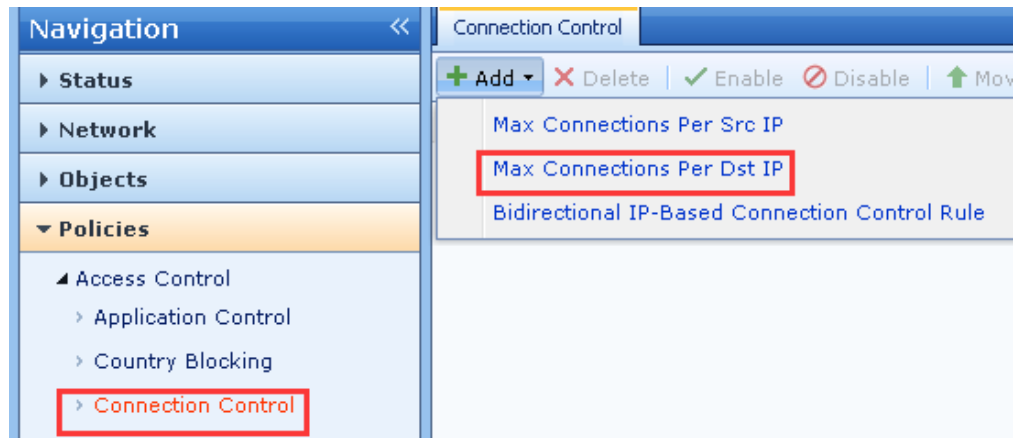
- In **Policies > Connection Control > Max Connections Per Dst IP** to add a new destination IP-based connection control.

Your Future-Proof IT Enabler

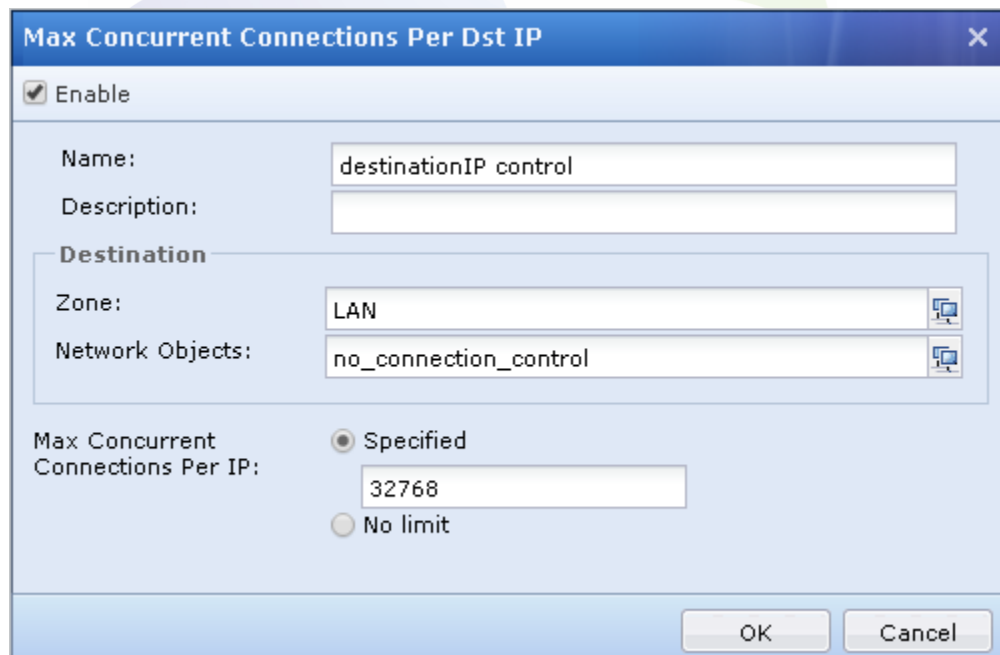
Sangfor Technologies

Block A1, Nanshan iPark, No.1001 Xueyuan Road, Nanshan District, Shenzhen, China

T.: +60 12711 7129 (7511) | E.: tech.support@sangfor.com | W.: www.sangfor.com



- **Destination Zone:** Select the corresponding zone for limiting.
- **Network Objects:** Select the target object.
- **Max Concurrent Connections Per IP:** Set up the maximum number of concurrent connection for each IP address.



3.3 Bidirectional IP-based connection control

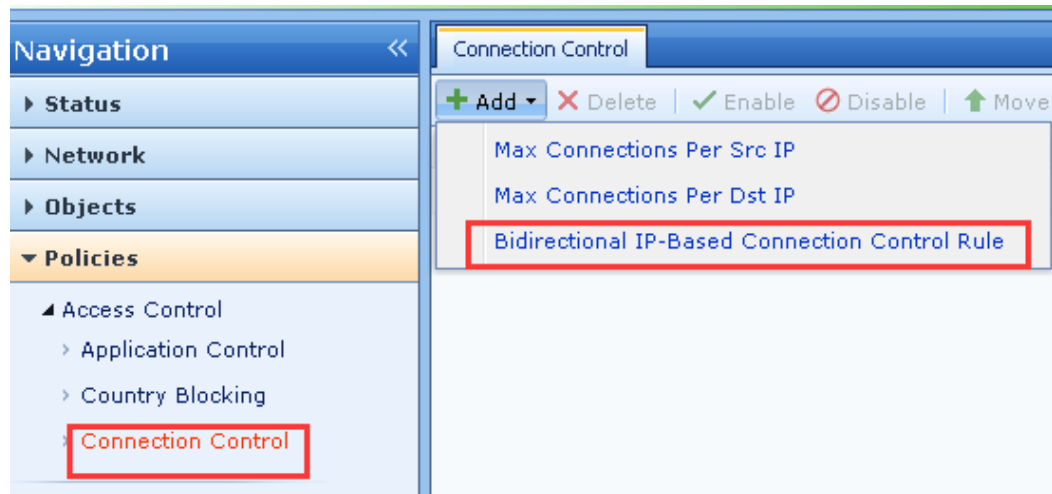
- In **Policies > Connection Control > Bidirectional IP-Based Connection Control Rule** to add a new destination IP-based connection control.

Your Future-Proof IT Enabler

Sangfor Technologies

Block A1, Nanshan iPark, No.1001 Xueyuan Road, Nanshan District, Shenzhen, China

T.: +60 12711 7129 (7511) | E.: tech.support@sangfor.com | W.: www.sangfor.com



- **Source/ Destination Zone:** Select the corresponding zone for limiting.
- **Network Objects:** Select the target object.
- **Max Concurrent Connections Per IP:** Set up the maximum number of concurrent connection for each IP address.

Add Bidirectional IP-Based Connection Control Rule

☒ Enable

Name:

Description:

Source

Zone:

IP Group:

Destination

Zone:

IP Group:

Max Concurrent Sessions: ☒ Specified ☐ No limit

OK Cancel

Your Future-Proof IT Enabler

Sangfor Technologies

Block A1, Nanshan iPark, No.1001 Xueyuan Road, Nanshan District, Shenzhen, China

T.: +60 12711 7129 (7511) | E.: tech.support@sangfor.com | W.: www.sangfor.com



4 Precautions

- i. Create a new IP Group can be set with single IP address like **10.10.10.1** set with multiple IP address like **10.10.10.1-10.10.10.10**, and set with network segment like **10.10.10.0/24**.
- ii. Select the “**No limit**” in **Max Concurrent Connections Per IP** represents connection control does not have effect.
- iii. NGAF connection control has effect on **TCP** connection.



Your Future-Proof IT Enabler

Sangfor Technologies

Block A1, Nanshan iPark, No.1001 Xueyuan Road, Nanshan District, Shenzhen, China

T.: +60 12711 7129 (7511) | E.: tech.support@sangfor.com | W.: www.sangfor.com