



SANGFOR



NGAF

Restore device default configuration

Version 8.0.6



Table of Contents

- 1 Function Introduction..... 1
- 2 Application Scenarios 1
- 3 Configuration Ideas 1
- 4 Description of necessary conditions..... 1
- 5 Configurations and Screenshot 1
 - 5.1 Restore through user interface to default configuration 1
 - 5.2 Restore through Sangfor Updater 2
- 6 Precautions 4

1 Function Introduction

Restore the NGAF device to the factory configuration.

2 Application Scenarios

Deploying the NGAF device to another network requires to clear all configuration and restoring them to the factory state.

3 Configuration Ideas

1. Restore the default configuration on the user interface.
2. Use the Sangfor Updater to restore the default configuration.

4 Description of necessary conditions

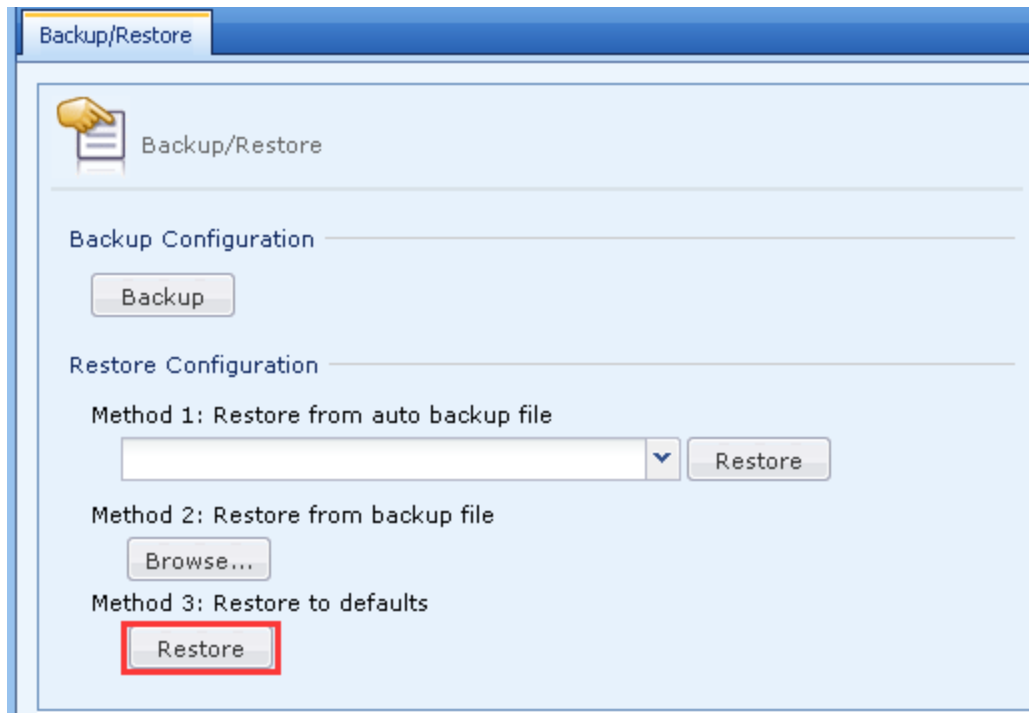
1. One NGAF device and one PC.
2. Make sure PC can communicate with NGAF, able to login to the user interface.
3. Sangfor Updater and update package.

5 Configurations and Screenshot

There are two methods for restoring the device to default configuration. One is through user interface to restore device to the default configuration. Another one is restore through updater to update to the same version. Below are the following two method configuration and screenshots:

5.1 Restore through user interface to default configuration

1. Go to **System > Maintenance > Backup/Restore**, press the **Restore** button under method 3 as figure below:



Note: Pressing the **Restore** button required to restart the device.

5.2 Restore through Sangfor Updater

1. First, need to download the Sangfor Updater and update package, If your current version is 8.0.6 then you need to download 8.0.6 update package.

Update package download link:

<http://community.sangfor.com/plugin.php?id=service:download&action=view&fid=10#/1/all>

Turn to your local supplier or Sangfor technical support representative for help if you have problem in installing or upgrading your Sangfor products.

Version: All

- **NGAF 8.0.6**

Name	Description	Size	File MD5	Last Update	Download	Operation
NGAF 8.0.6	Support upgrade from official versions: NGAF7.0, NGAF7.1, NGAF7.1 R1, NGAF7.2, NGAF7.3, NGAF7.4, AF7.5.1, NGAF8.0.2, NGAF8.0.5. (This version does not support IPv6)	443.63 MB	4F290729B085F5F679A2630090D371CB	19 Nov 2018 18:13		Copy Link

- NGAF 8.0.5

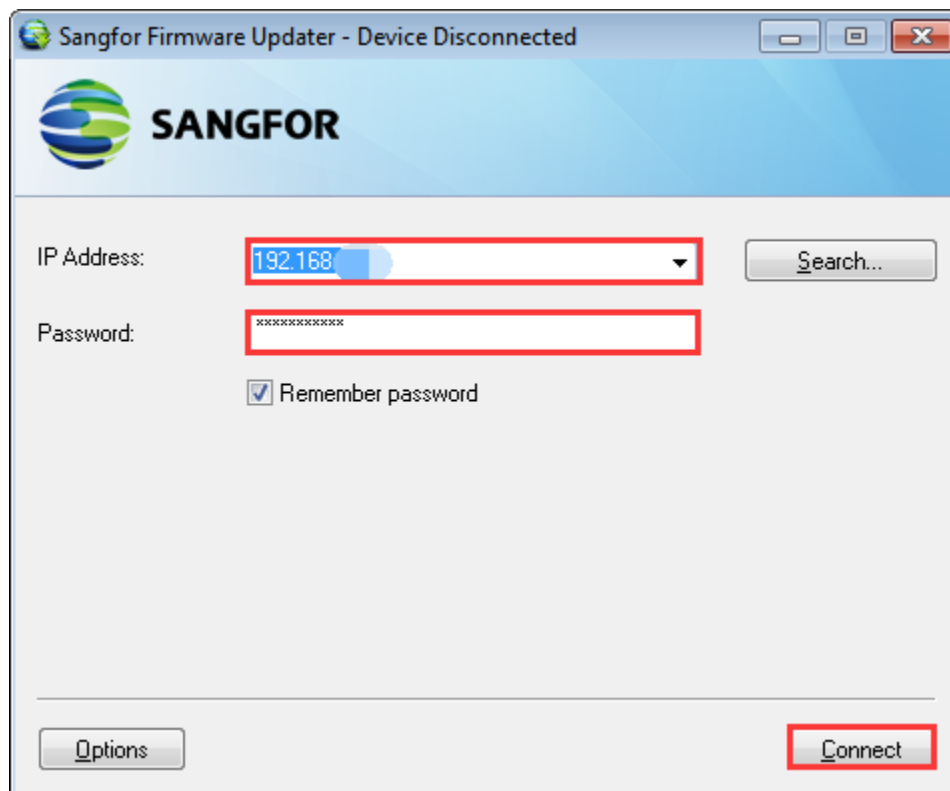
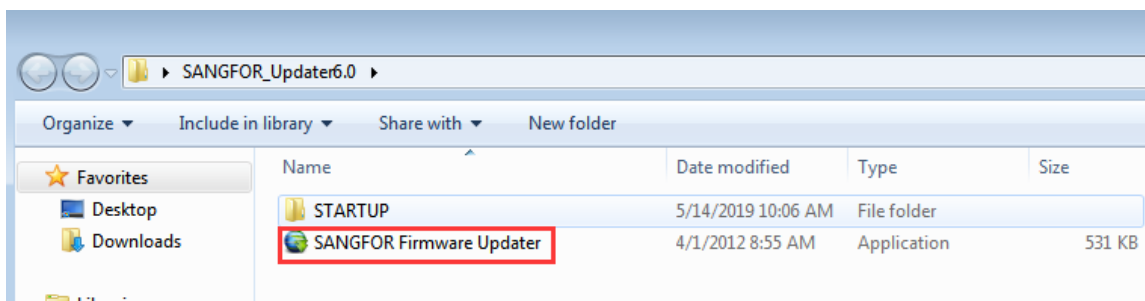
Name	Description	Size	File MD5	Last Update	Download	Operation
NGAF 8.0.5	Support upgrade from official versions: NGAF7.0, NGAF7.1, NGAF7.1 R1, NGAF7.2, NGAF7.3, NGAF7.4, AF7.5.1, NGAF8.0.2. (This version does not support IPv6)	386MB	74A2499F7F261B8DD3C1CB83F3C744A7	12 Sep 2018 15:56		Copy Link

Sangfor Updater download link:

<http://community.sangfor.com/plugin.php?id=service:download&action=tool>

Software	Tools	<u>URL Database</u>	App Database
Sangfor Firmware Updater			
Tool used to install update package on any Sangfor product(excluding Sangfor HCI)			
Last Update: 18 Dec 2017 14:12 Size: 3.09 MB File MD5: 34651C151D81DAFFFC5AC5A4172DC86D			Download
PDLAN4.32R3 Installation package			
It can be installed on Windows 2000(32-bit), Windows XP(32-bit), Windows 2003 server(32-bit), vista(32-bit), Windows 7(32/64-bit), Windows 8(32/64-bit), windows server 2012(64-bit), Windows 8.1(32/64-bit), Windows 10(32/64-bit).			
Last Update: 19 Nov 2015 21:18 Size: 21.35MB File MD5: 2CC2B44E77AFDEFA950801EB36ACF0EA			Download

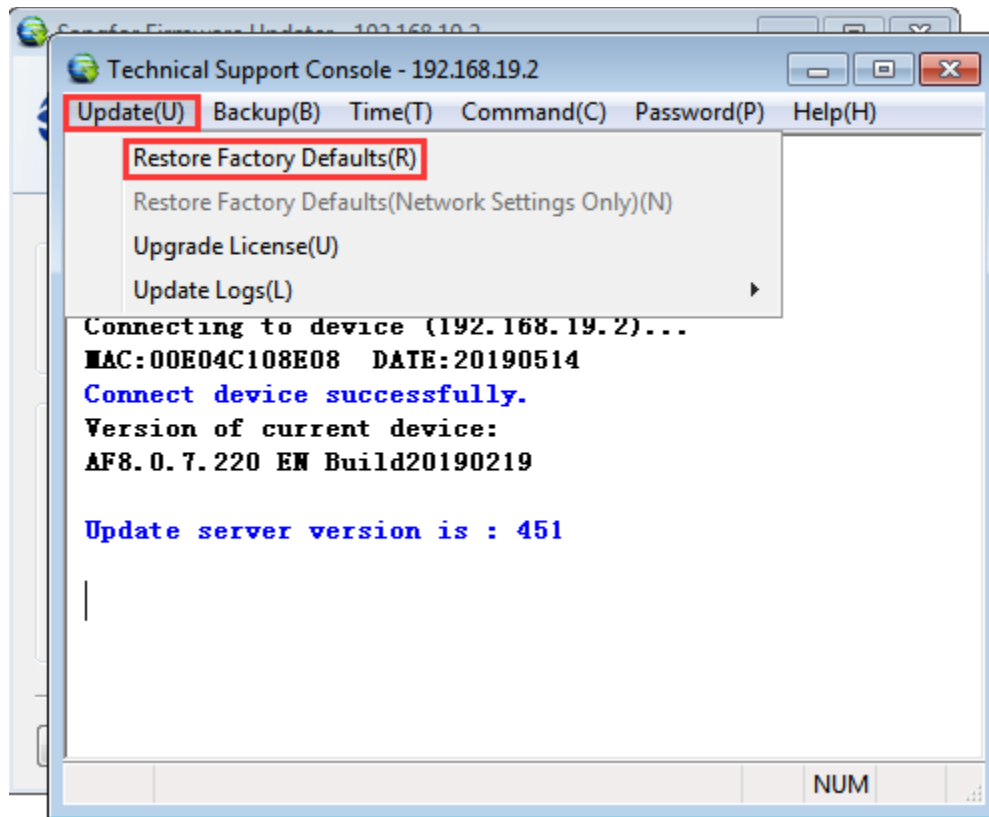
2. Unzip the Updater tools and run the Updater.exe, login to the device as figure below:



IP address: User interface login address.

Password: Admin account password.

3. After login, press **F10** and a command prompt interface will pop up. Go to **Update > Restore Factory Defaults** as figure below:



4. Choose the update package that you have downloaded for restoring device to default configuration. When the restore process is completed, it required restart the device. After device restart, the device will have factory configuration and you may use the default IP to login to user interface.

6 Precautions

1. After the device is restored to the factory configuration, you can direct connect to the management port. Use IP 10.251.251.251 to connect to user interface, username and password are **admin**. If version below 3.0, username and password will be **admin/sangfor**.
2. In both methods, you need to use the admin password. If the password is forgotten, you need to restore the password through the USB flash drive before using the method to restore.



SANGFOR

Copyright © SANGFOR Technologies Inc. All rights reserved.

No part of this document may be reproduced or transmitted in any form or by any means without prior written consent of SANGFOR Technologies Inc.

SANGFOR is the trademark of SANGFOR Technologies Inc. All other trademarks and trade names mentioned in this document are the property of their respective holders.

Every effort has been made in the preparation of this document to ensure accuracy of the contents, but all statements, information, and recommendations in this document do not constitute a warranty of any kind, express or implied. The information in this document is subject to change without notice. To obtain the latest version, contact the international service center of SANGFOR Technologies Inc