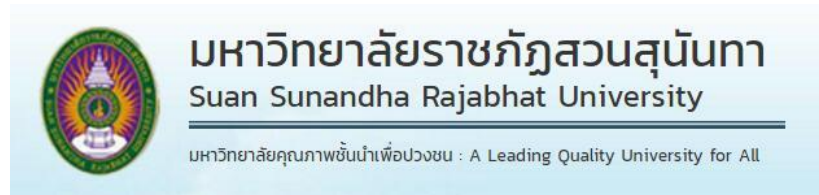




Sangfor HCI Case Study

New DC Construction for Suan Sunandha Rajabhat University

Customer Background



SSRU offers undergraduate programs, graduate programs and doctoral degree programs to full-time and part-time students. It has more than 80 fields of study for students. SSRU also has the International College and Management College, which offers various programs. Students enjoy learning via on-line systems, e-learning, Internet/Intranet; wireless campus services are also provided throughout the university. The 14 database systems, which collect academic documents, are available in English. All processes regarding student admission, registration, delivery of student grades, announcement of study results and payments are made through the online systems.

Challenges

SSRU aims to reform and empowers all levels of operational processes to be more flexible, rapid, efficient and effective; and the key point is to utilize information technology and modern communication means to make the transformation towards e-university, improving management capability and service level for users.

In order to reach the goal, IT department has to find the solution that can deal with massive online connection from users who need to access internal services, as currently such connection requests have often caused network delay and access failure. It is also impacting others business functions like financial services, document process and curriculum management, etc. Due to all these issues, the university starts to consider reforming its IT infrastructure for higher performance.

The IT infrastructures of the university mainly supports e-university and financial services that carry high load of connections by providing web service for various type of categories and interlink

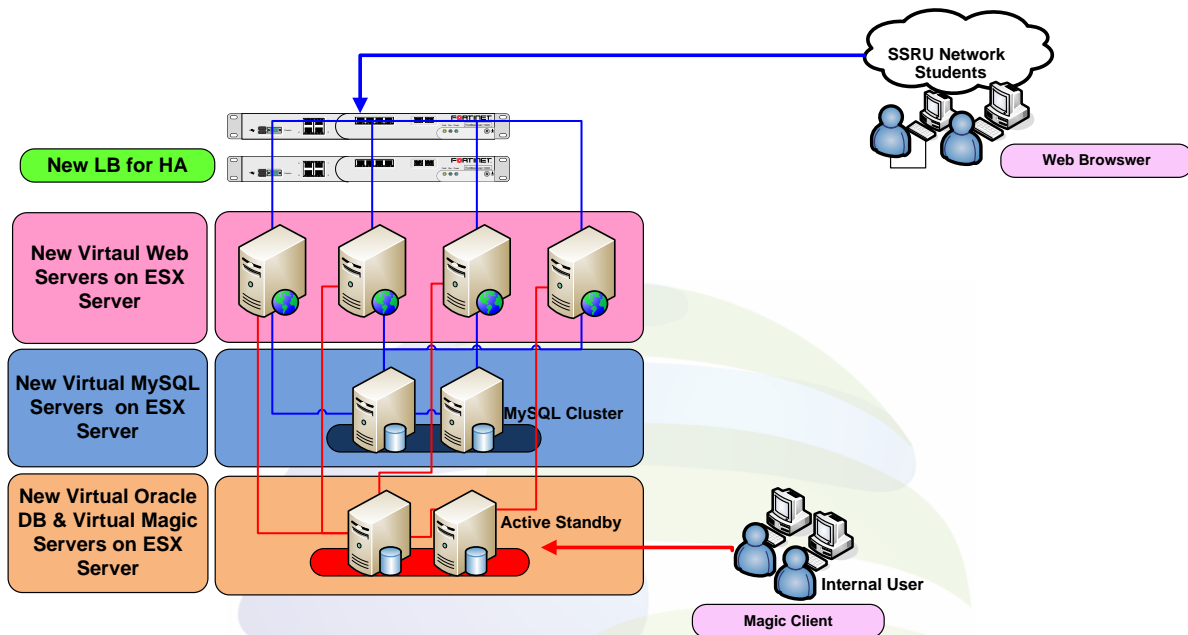
Your Future-Proof IT Enabler

Sangfor Technologies

Block A1, Nanshan iPark, No.1001 Xueyuan Road, Nanshan District, Shenzhen, China

T.: +60 12711 7129 (7511) | E.: sales@sangfor.com | W.: www.sangfor.com

with both Oracle and MySQL database which need high performance on data processing. However, the university's current system is not capable of managing the increasing demand for connection, as a result of fast growing rate of new students every year.



SSRU has been dedicated on technology development for years in the pursuit of achieving E-University. The university has tried various kinds of new technology and believe that Hyper-Converged Infrastructure (HCI) is the innovation that can re-define IT infrastructure and boost data center efficiency and performance, and eventually make the transition towards cloud.

Sangfor Solution

Sangfor's Hyper-Converged Infrastructure (HCI) brings new idea of resource management in way of scalable standard hardware plus virtualization technology. Operation and maintenance are no longer chores, as a few IT staff are capable supporting large systems effortlessly now. Moreover, network virtualization and other NFV functions enhance user experience and IT service performance.

Sangfor HCI provides flexible resource planning for the university's dynamic requirement growth, sparing them from unnecessary follow-up investment when upgrade is needed.

Your Future-Proof IT Enabler

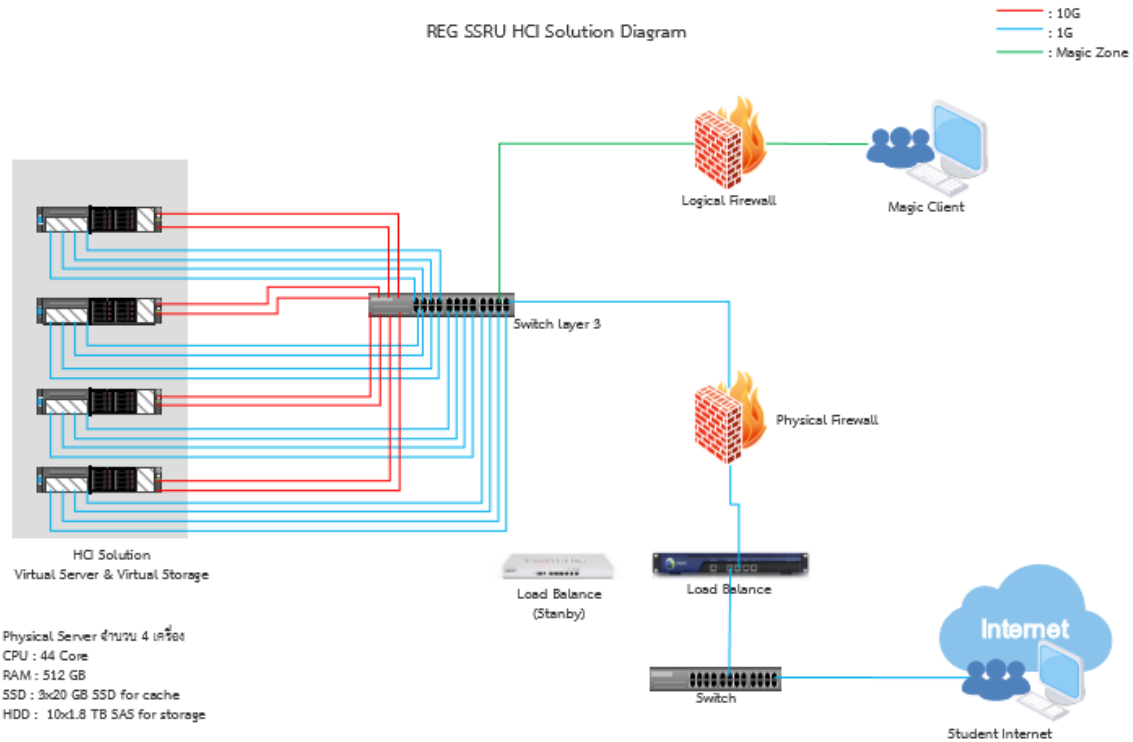
Sangfor Technologies

Block A1, Nanshan iPark, No.1001 Xueyuan Road, Nanshan District, Shenzhen, China

T.: +60 12711 7129 (7511) | E.: sales@sangfor.com | W.: www.sangfor.com



REG SSRU HCI Solution Diagram



SSRU's various servers on which services have been running for a long time are successfully migrated into Sangfor HCI. The university finds the final result very satisfactory, HCI simplifies many complex tasks and reduces O&M time for IT staff.

Your Future-Proof IT Enabler

Sangfor Technologies

Block A1, Nanshan iPark, No.1001 Xueyuan Road, Nanshan District, Shenzhen, China

T.: +60 12711 7129 (7511) | E.: sales@sangfor.com | W.: www.sangfor.com