



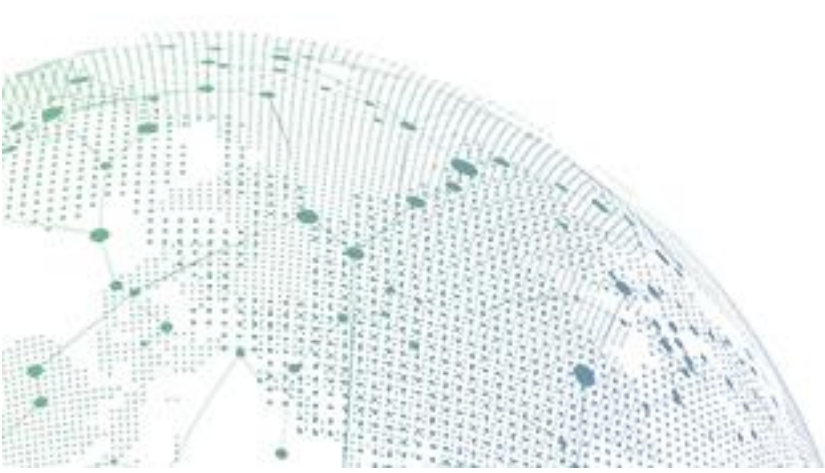
SANGFOR



IAM

BI Installation and Update Configuration Steps

Version 12.0.13



Change Log

Date	Change Description

CONTENT

Chapter 1 Applicable Environment	4
Chapter 2 Installation & Update & Uninstall Steps	4
2.1 Installation Steps	4
2.2 Update Steps.....	8
2.3 Uninstall.....	12
Chapter 3 Precautions.....	13

Chapter 1 Applicable Environment

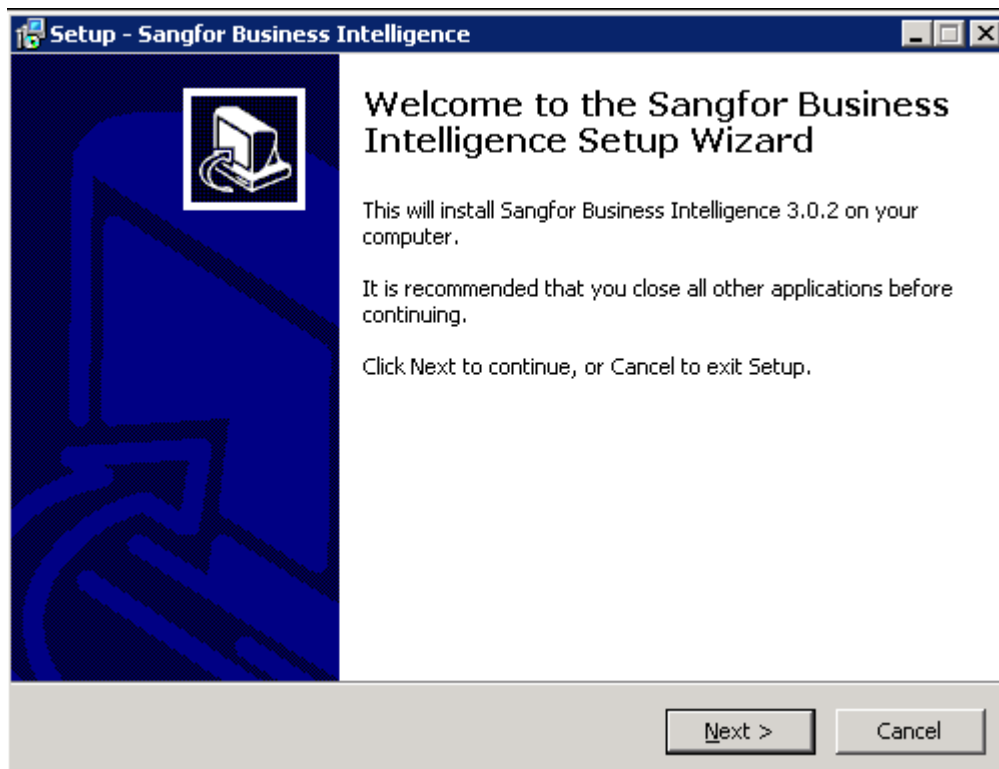
Customer use Connection Sharing module and face some common issue, this document is to assist on problem solving.

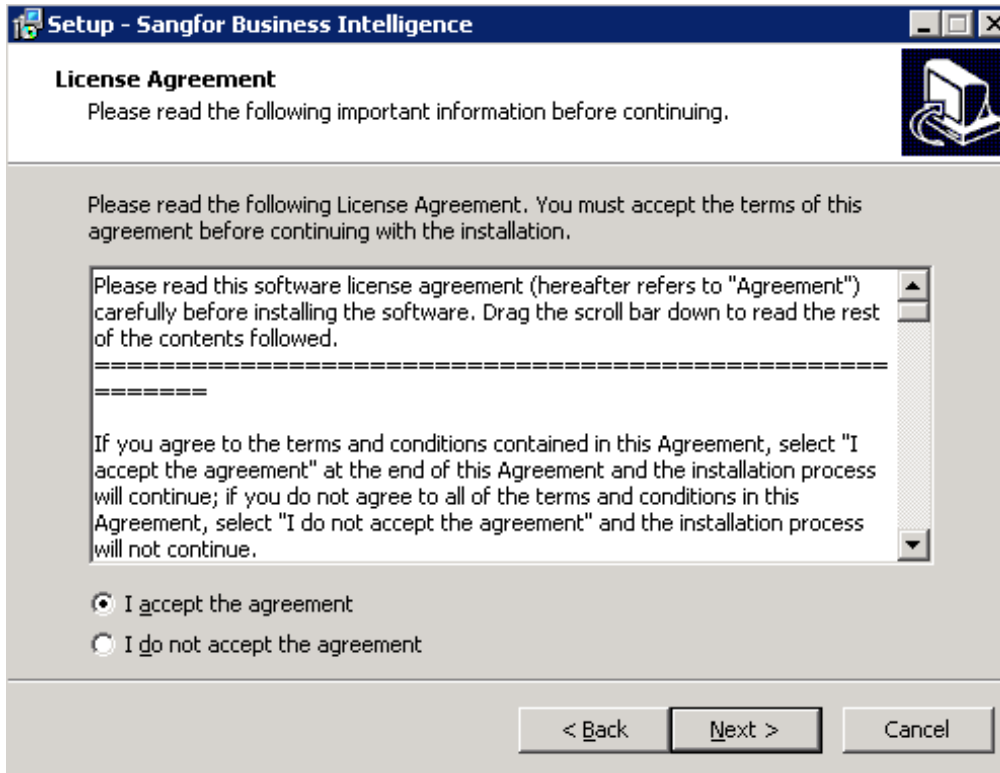
Chapter 2 Installation & Update & Uninstall

Steps

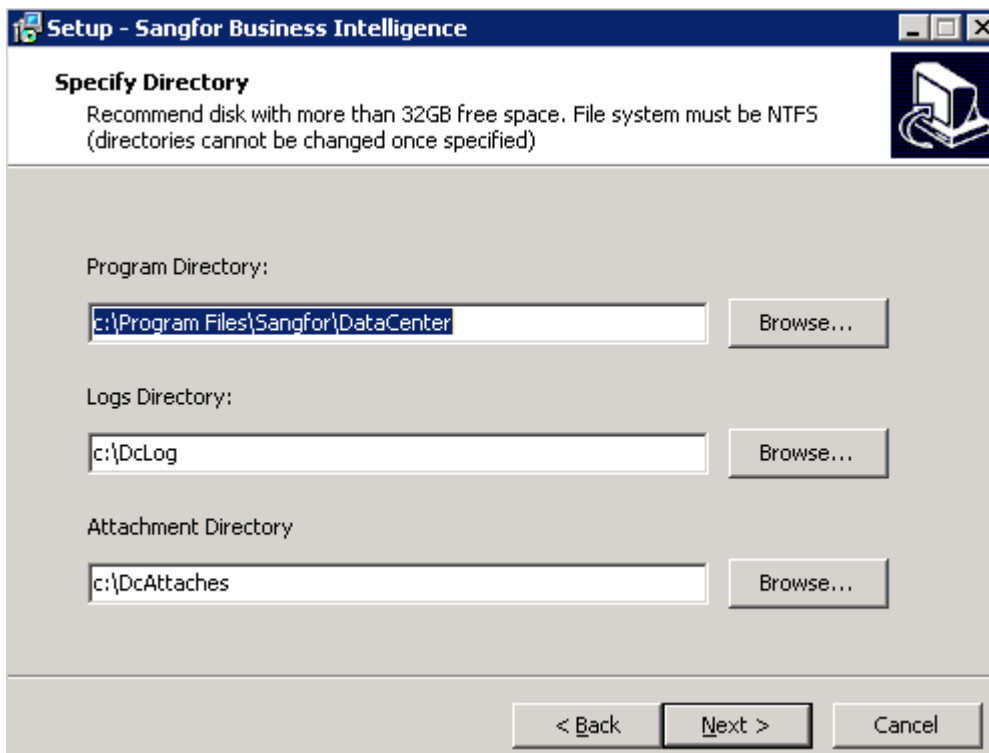
2.1 Installation Steps

- 1 First of all, access here: https://drive.google.com/file/d/1V0T7uYngmvV54a-puBmwbMLgwUA__L_l/view?usp=sharing to get the BI installation setup.
2. The suitable environment must be higher than Windows Server 2008, extract from the compression file then install as image shown:

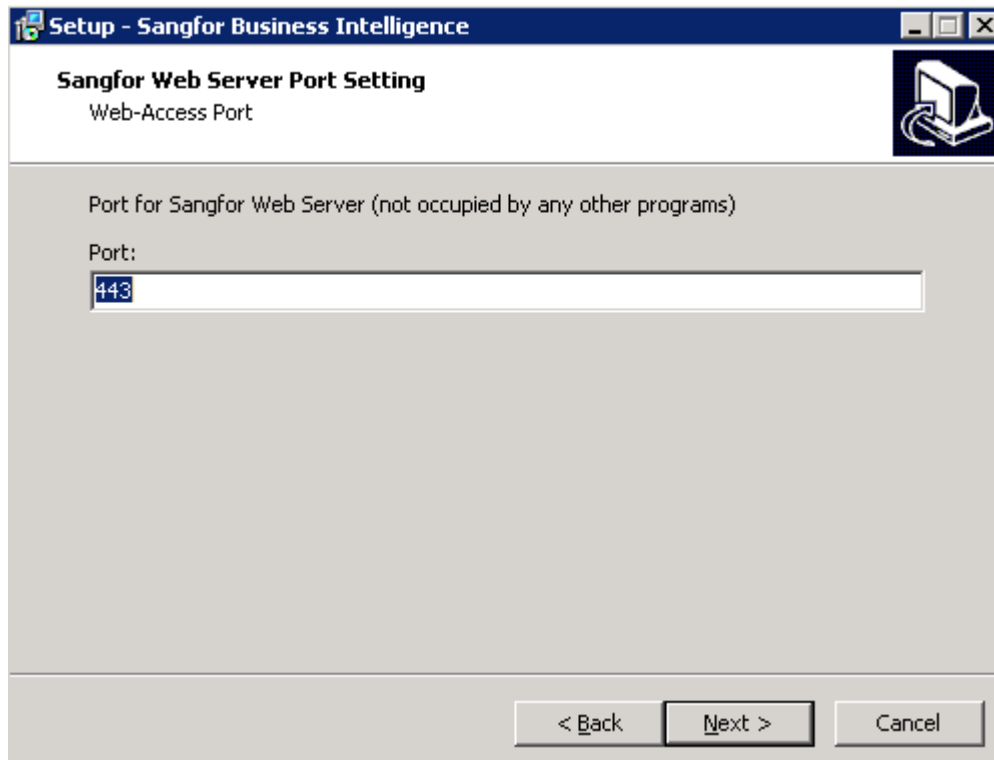




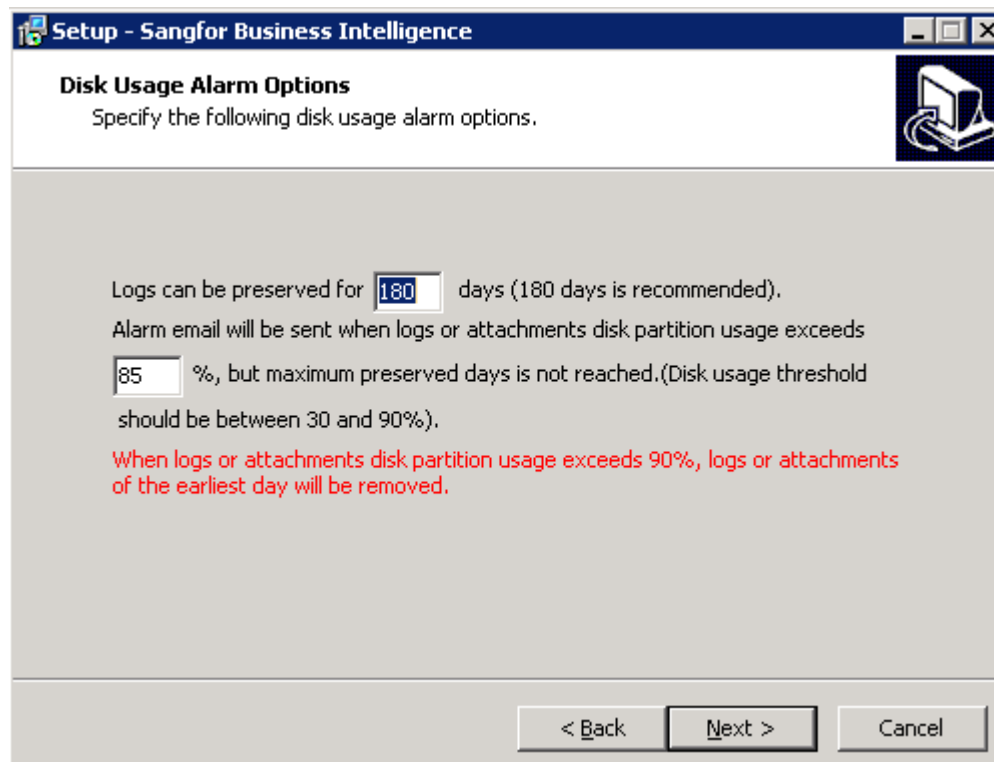
Select the directory pathway for program, logs and attachment: kindly choose a bigger amount storage drive for log directory in order to prevent insufficient of space for log in future.



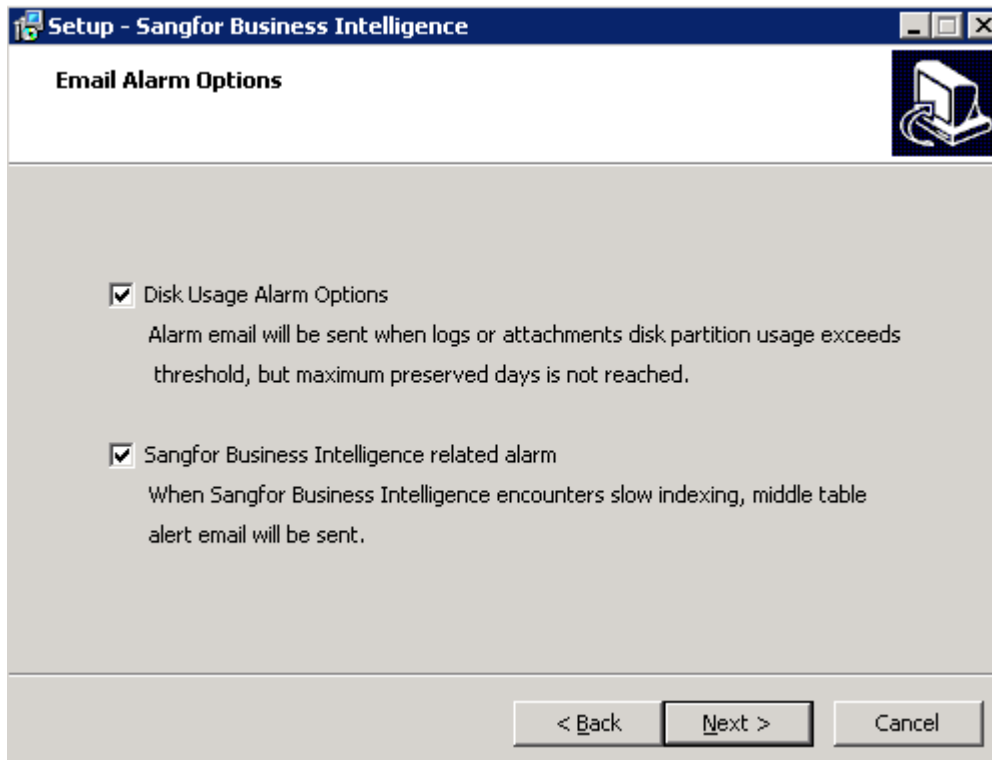
Web UI management port will be 443 as default. To access webUI please type: https://pcip (IP address of PC) then enter. If you are not using 443 as port number then access https://pcip:port to go. You can customize the port number after BI installed in System->System Options-> Advanced Options



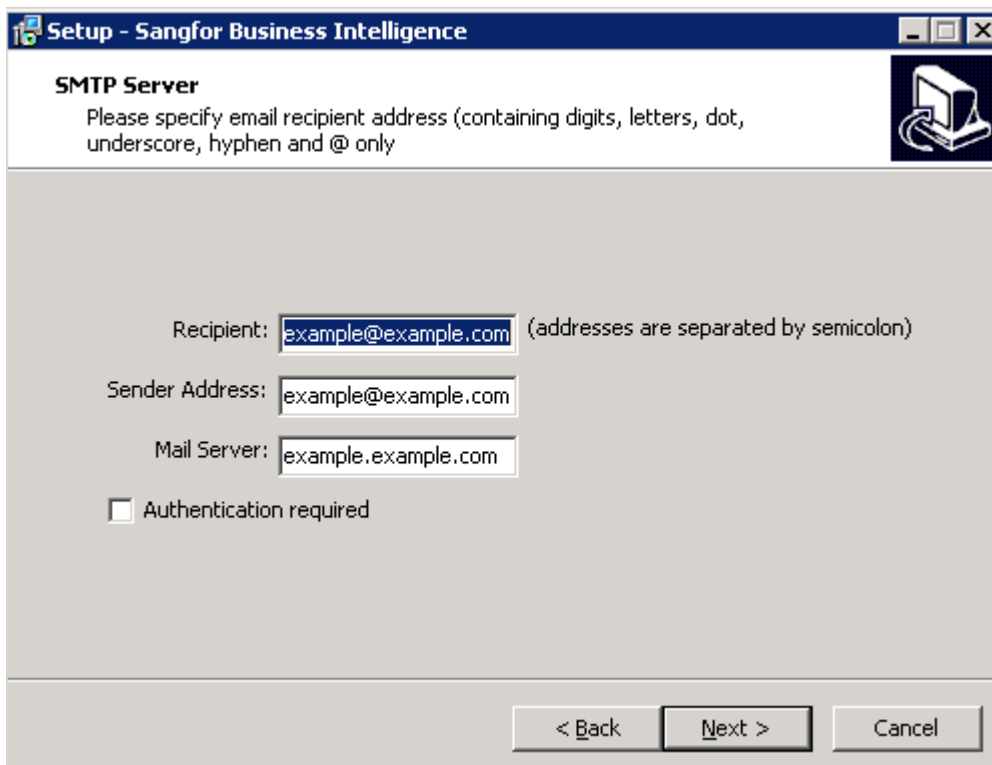
Input the days for the logs to preserve: click "Next" to complete installation, This configuration can be changed at System->System Options->Alarm Options

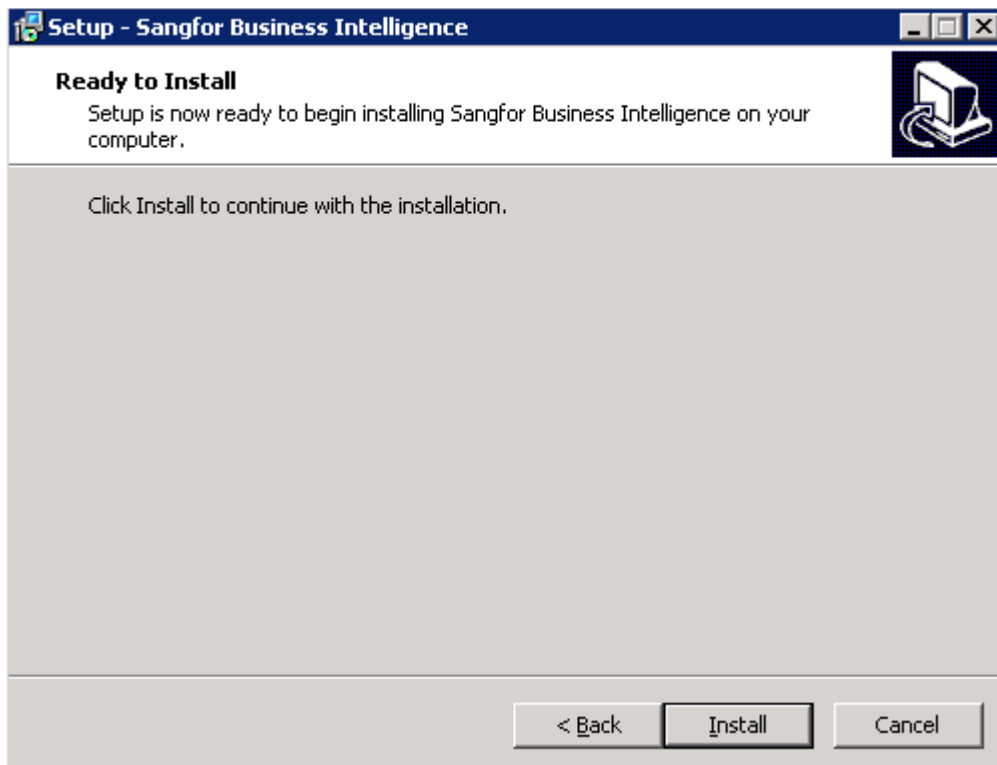


Set up email alarm options: This configuration can be change at System->System Options->Alarm Options after installation.

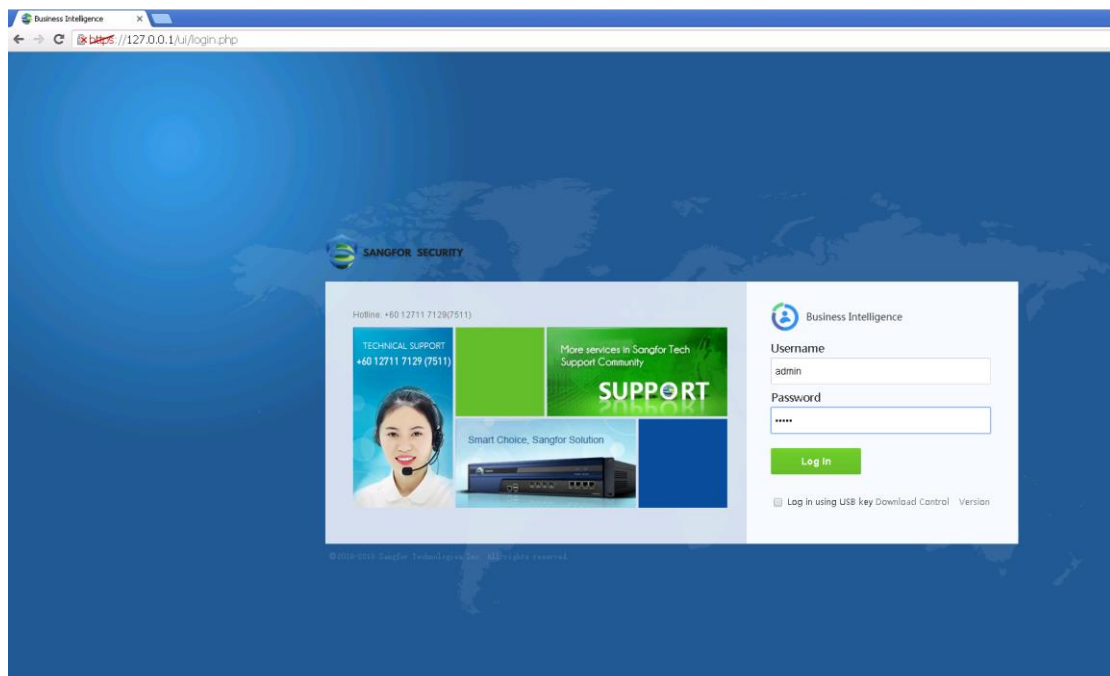


Set up SMTP Server: This configuration can be change at System->System Options->System Options after installation. Make sure the installed BI and PC are able to have normal connection to receive the the alert by email.





BI complete with installation, web interface username as admin, password as admin.



2.2 Update Steps

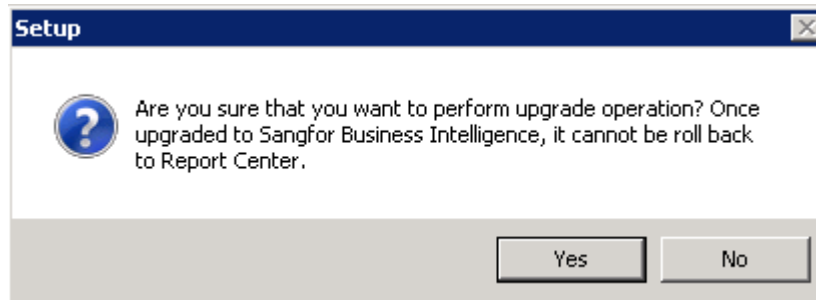
1. Update Guidelines:

Exist with older version of Data Center system and installed BI system.

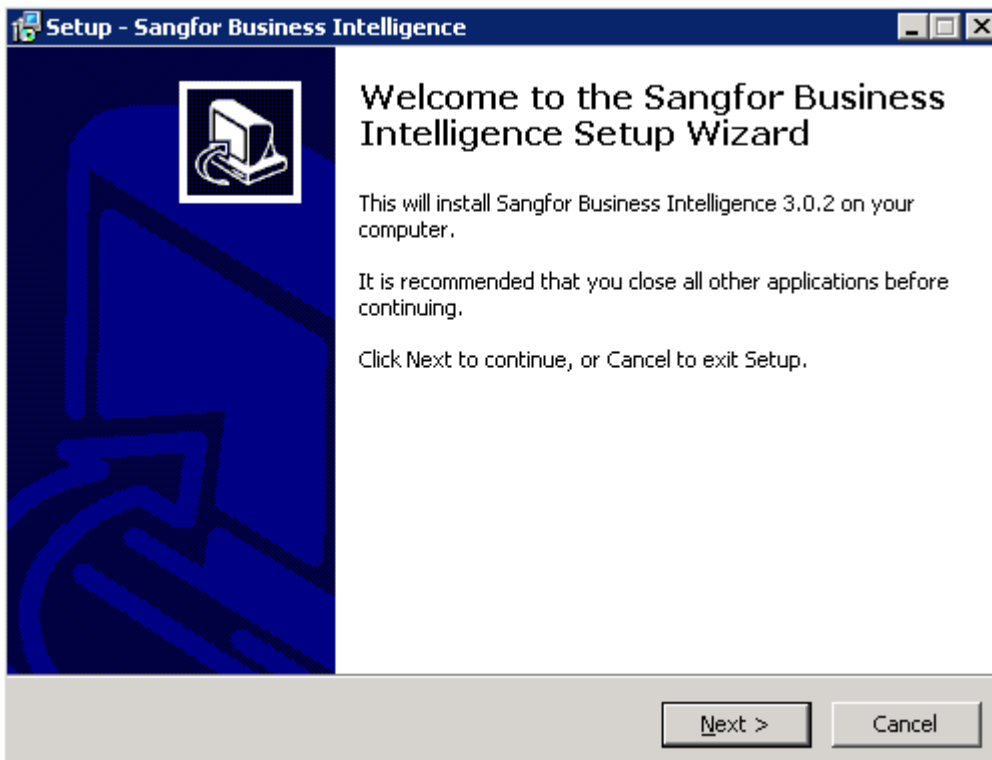
<https://drive.google.com/file/d/1-kE11LwpP0coFaoE7yWzNm4t4LPFsMg8/view?usp=sharing> to retrieve update package.

Extract the update compression file then install it as images shown below:

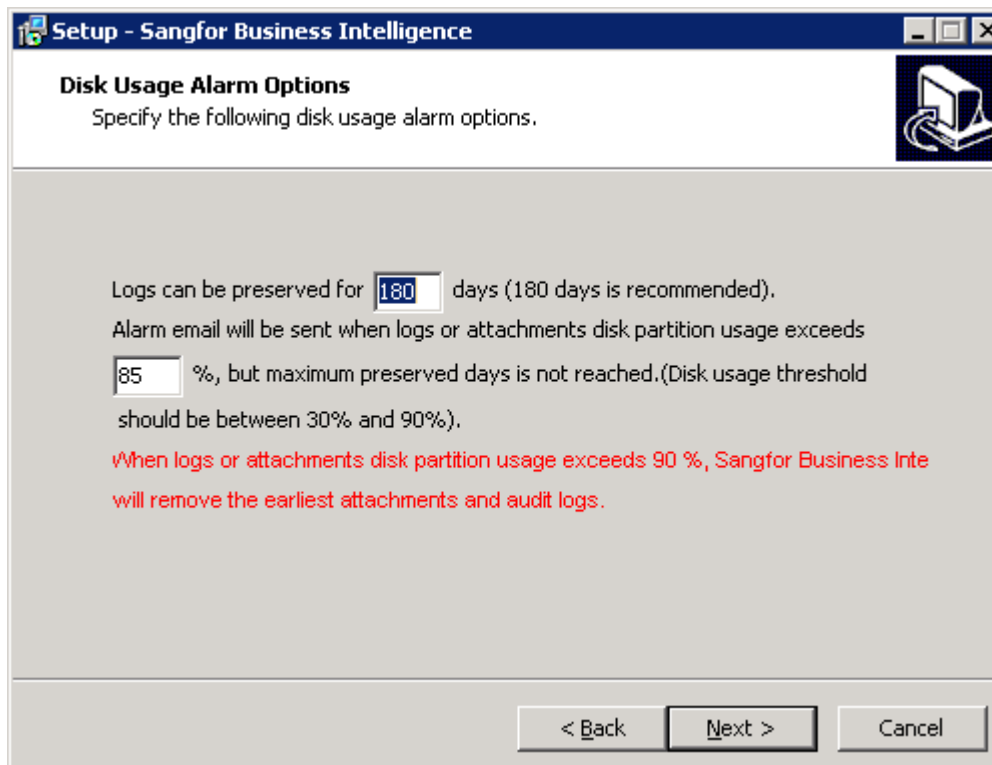
From DC to BA will pop out this alert message: this update is irreversible from BA to DC again.



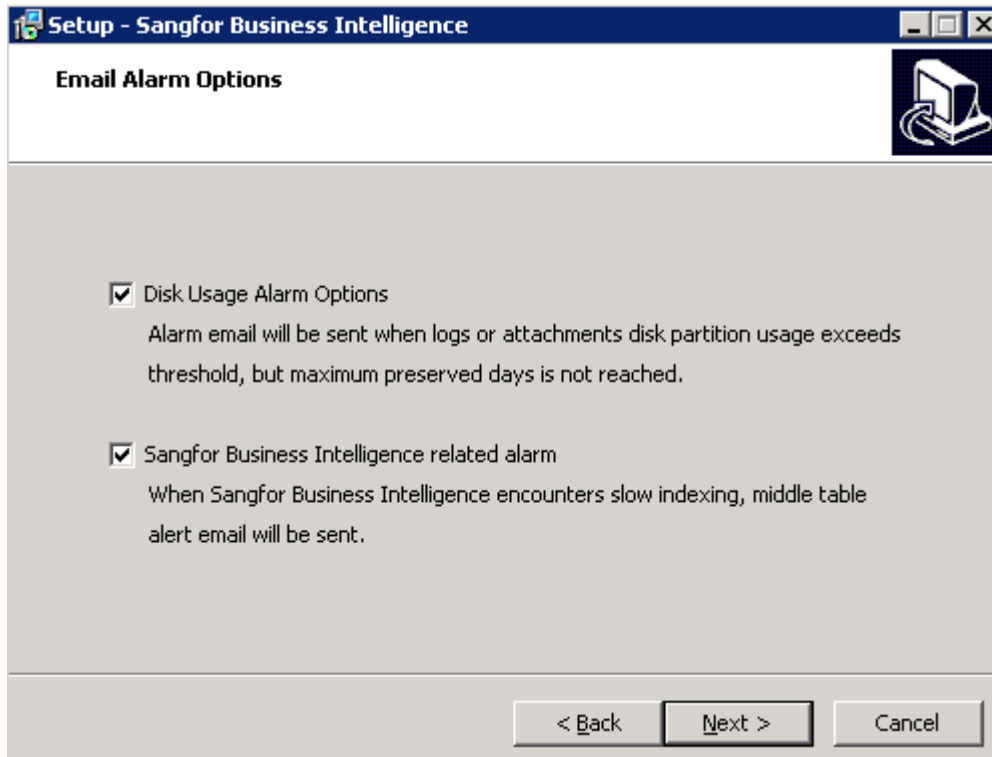
Click "Yes" to proceed into this interface:



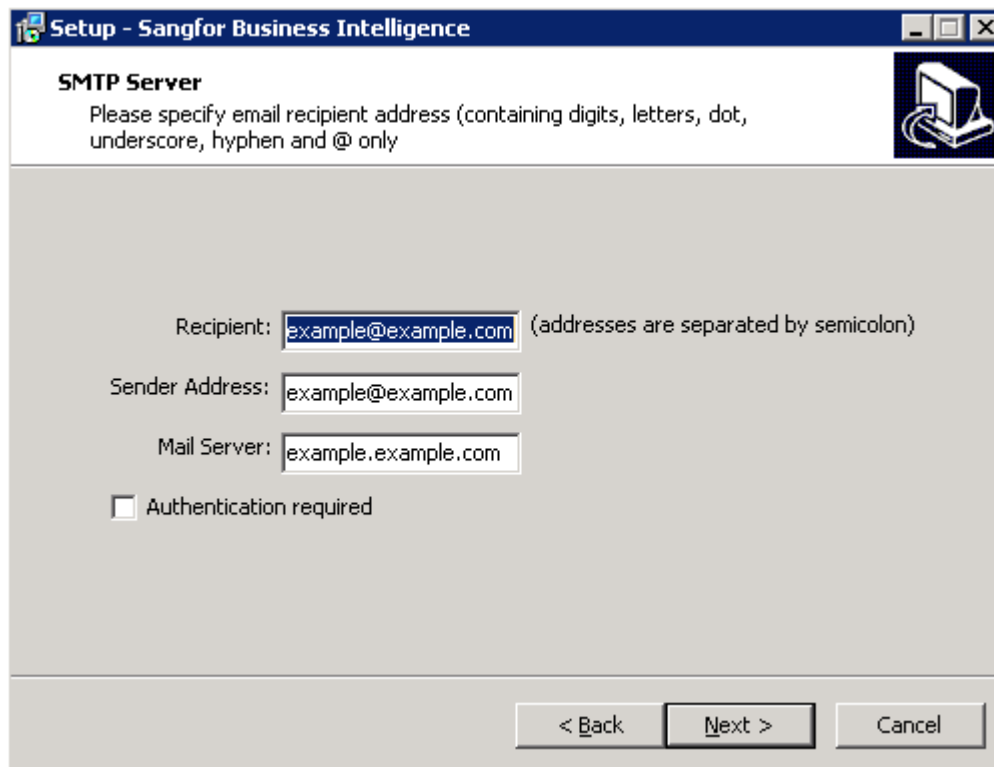
Input the days for the logs to preserve: click "Next" to complete installation, This configuration can be change at System -> System Options -> General -> Alarm Options



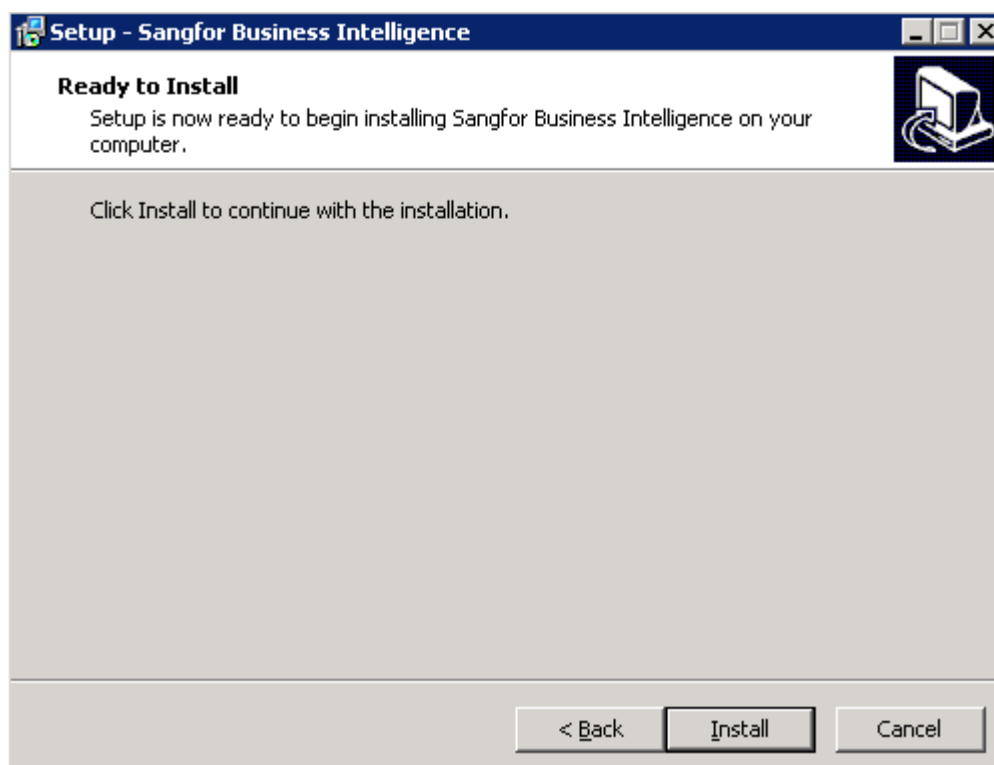
Set up email alarm options: This configuration can be change at System -> System Options -> General -> Alarm Options after installation.



Set up SMTP Server: This configuration can be change at System -> System Options -> General -> Alarm Options after installation. Make sure the installed BI and PC are able to have normal connection to receive the the alert by email.

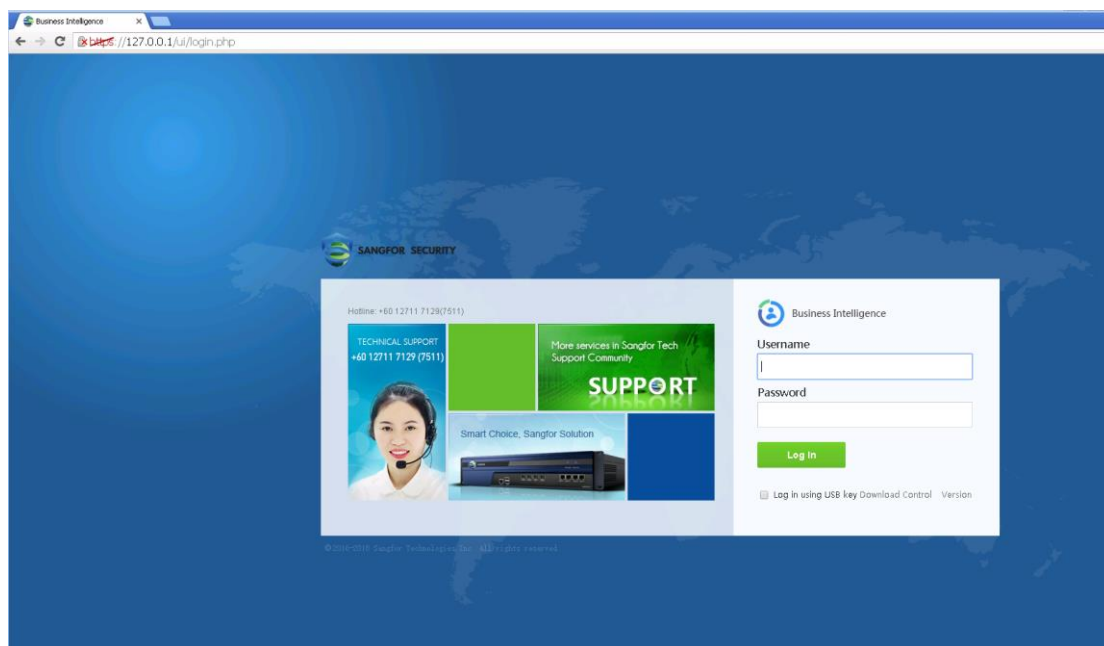


One last step to complete:



After installation complete, access the BI and the password will be the same as the

previous Report Center's password.

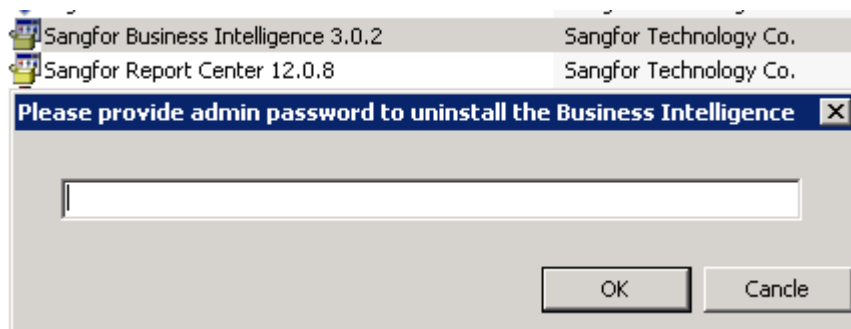


2.3 Uninstall

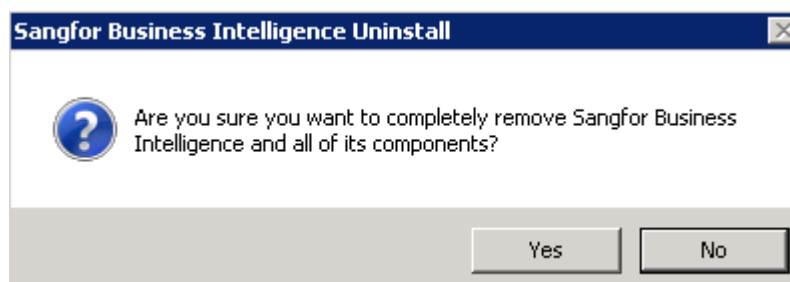
To uninstall the BI:

ATTENTION: From older to latest version will render two different uninstallation choice, please select the latest one, if you select the older version it might cause to BI cannot be install perfectly afterward. As the image shown below:

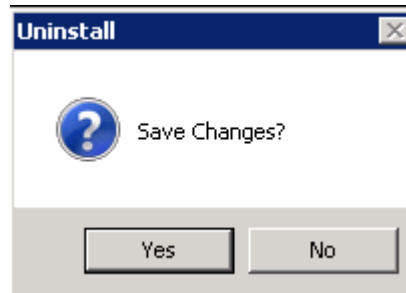
The password to uninstall is the admin account's password.



Click "Yes" to uninstall BI



Click “Yes” to reserve the sync log records, click “No” to remove the log records completely.



Chapter 3 Precautions

1. BI can only support Windows Server 2008 and 64 bit of operating system. Other than, these will be fail.
2. Access the BI webUi interface after half an hour of installation time, this is because the webUI service is not complete to use and lead to access denied situation.



Copyright © SANGFOR Technologies Inc. All rights reserved.

No part of this document may be reproduced or transmitted in any form or by any means without prior written consent of SANGFOR Technologies Inc.

SANGFOR is the trademark of SANGFOR Technologies Inc. All other trademarks and trade names mentioned in this document are the property of their respective holders. Every effort has been made in the preparation of this document to ensure accuracy of the contents, but all statements, information, and recommendations in this document do not constitute a warranty of any kind, express or implied.

The information in this document is subject to change without notice.

To obtain the latest version, contact the international service center of SANGFOR Technologies Inc