



**SANGFOR**

---

# SANGFOR WANO Deploy In Trunk Environment Case

SANGFOR Technologies Co., Ltd.

2.July 2015



## **WANO WANO Deploy In Trunk Environment Case**

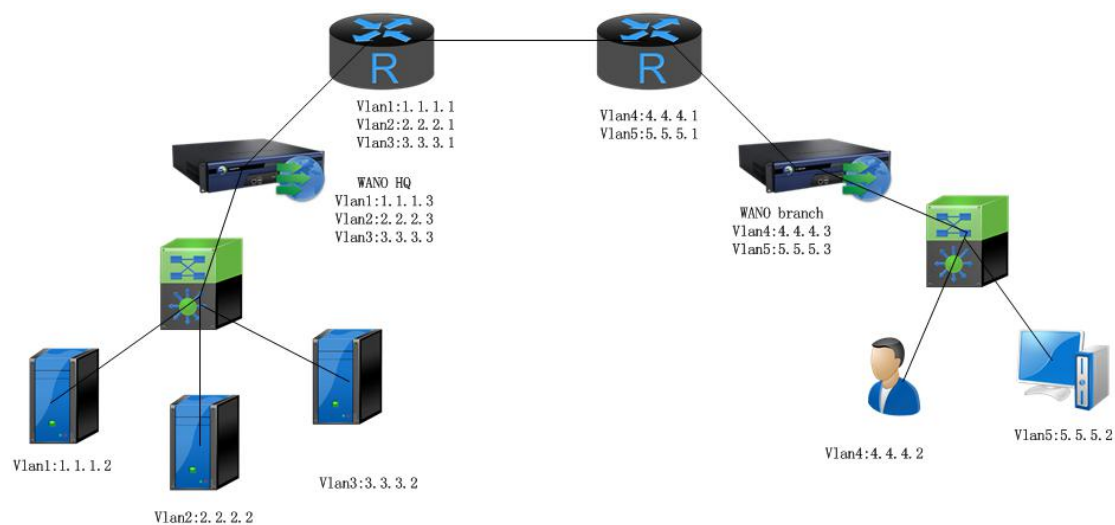
<b>WANO WANO DEPLOY IN TRUNK ENVIRONMENT CASE.....</b>	<b>2</b>
<b>1. ENVIRONMENT AND REQUIREMENT.....</b>	<b>3</b>
ENVIRONMENT:.....	3
REQUIREMENT:.....	3
<b>2. CONFIGURATION.....</b>	<b>3</b>
HQ WANO:.....	3
BRANCH WANO:.....	4

# 1. Environment And Requirement

## Environment:

HQ has 3 vlans: 1.1.1.x/2.2.2.x/3.3.3.x

Branch has 2 vlans: 4.4.4.x/5.5.5.x



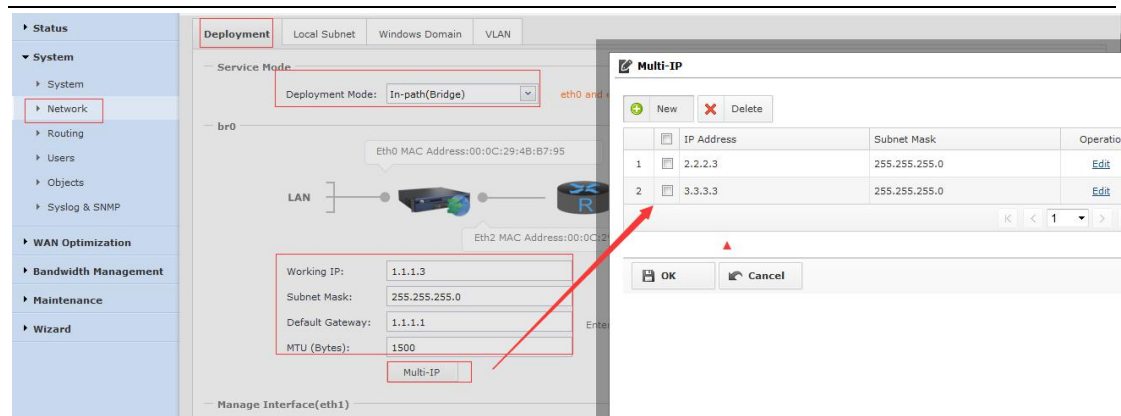
## Requirement:

accelerate traffic from branch to HQ server.

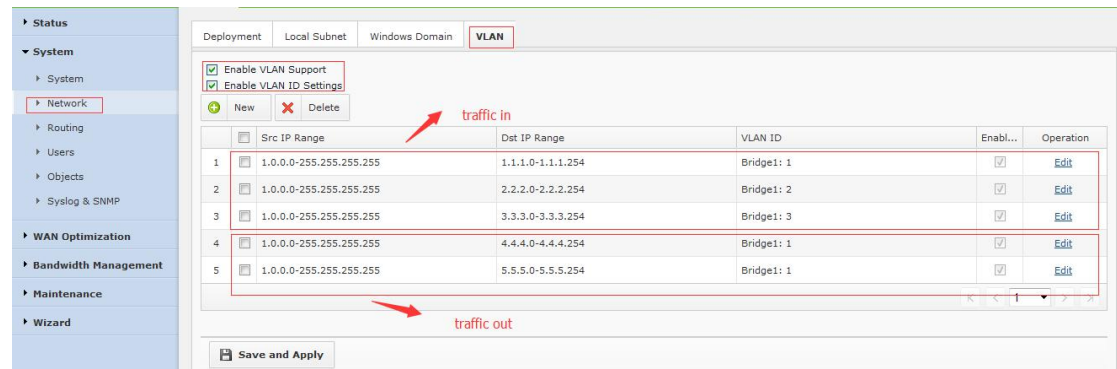
# 2. Configuration

## HQ WANO:

1. Configure deployment and set IP, each VLAN give WANO a VLAN IP, use one of them connect with Router.



## 2. Configure VLAN.

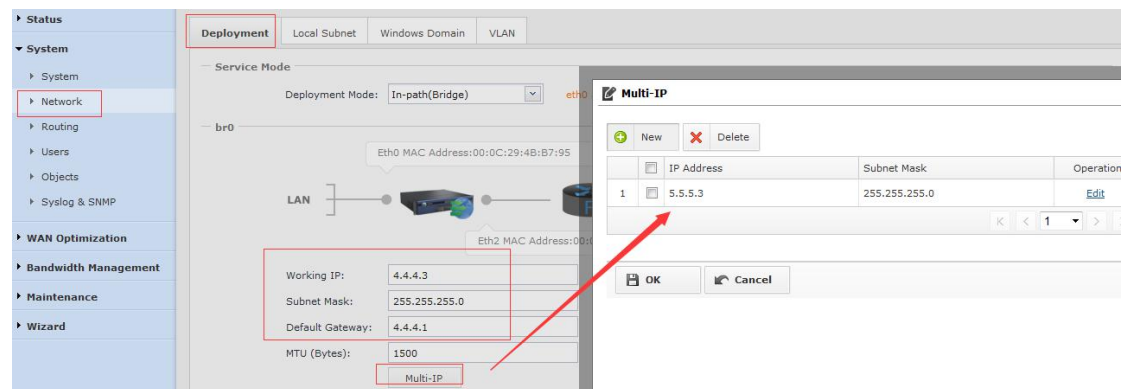


## 3. Create a acceleration account for branch.

## 4. Configure acceleration model and other.

# Branch WANO:

1. Configure deployment and set IP, each VLAN give WANO a VLAN IP, use one of them connect with Router.



## 2. Configure VLAN.



Status

System

System

Network

Routing

Users

Objects

Syslog & SNMP

WAN Optimization

Bandwidth Management

Maintenance

DeploymentLocal SubnetWindows DomainVLAN

Enable VLAN Support

Enable VLAN ID Settings

NewDelete

	Src IP Range	Dst IP Range	VLAN ID	Enabl...	Operation
1	1.0.0.0-255.255.255.255	4.4.4.0-4.4.4.255	Bridge1: 4	<input checked="" type="checkbox"/>	Edit
2	1.0.0.0-255.255.255.255	5.5.5.0-5.5.5.255	Bridge1: 5	<input checked="" type="checkbox"/>	Edit
3	1.0.0.0-255.255.255.255	1.1.1.0-1.1.1.255	Bridge1: 4	<input checked="" type="checkbox"/>	Edit
4	1.0.0.0-255.255.255.255	2.2.2.0-2.2.2.254	Bridge1: 4	<input checked="" type="checkbox"/>	Edit
5	1.0.0.0-255.255.255.255	3.3.3.0-3.3.3.255	Bridge1: 4	<input checked="" type="checkbox"/>	Edit

< < 1 > >

traffic in

traffic out

3. Configure acceleration options and other.