

Quick Start Guide

For Sangfor vWOC in HyperV



www.sangfor.com

Before You Begin

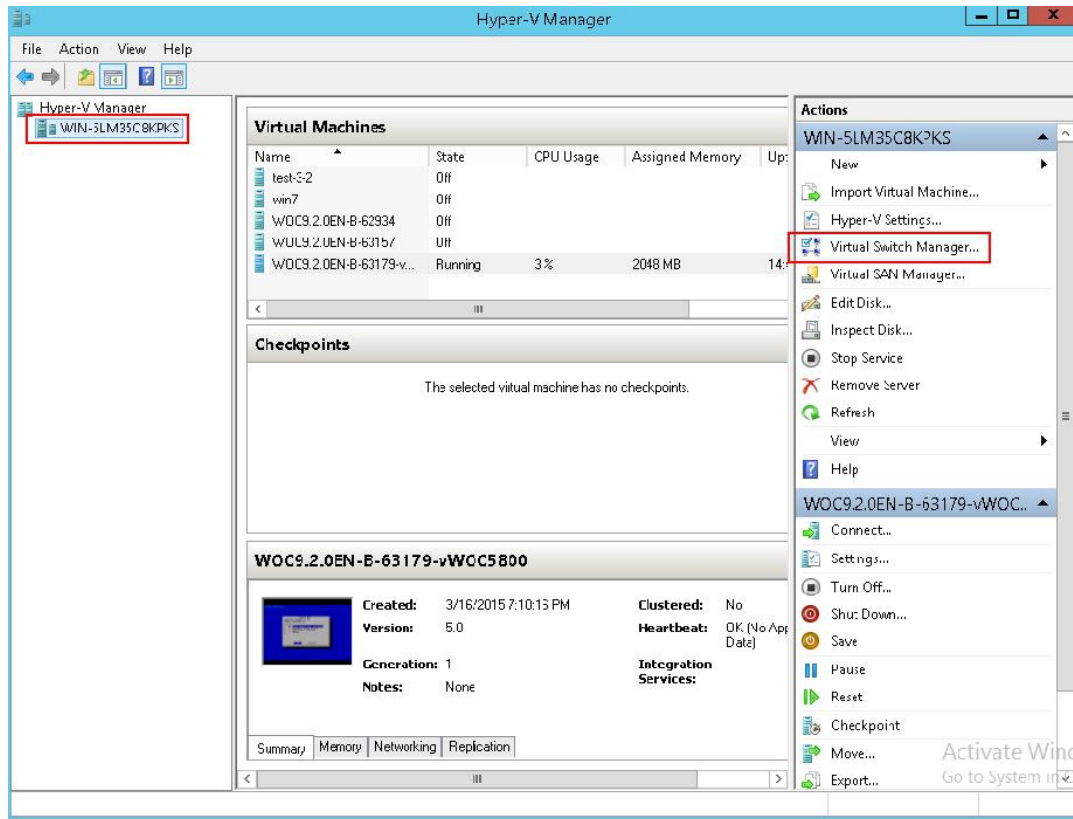
1. Comply with the VWOC Virtual Appliance Host System Requirements.
2. Download the virtual appliance ZIP file to the Hyper-V host disk:
<http://www.sangfor.com/product/sxf-network-optimization-wano.html>
3. If you don't have trial license yet, visit:
<http://www.sangfor.com/product/sxf-network-optimization-wano.html>
4. If not using DHCP, prepares an IP address for the VWOC appliance.

SUMMARY OF TASKS

- 1 Create the virtual network**
- 2 Create the virtual machine**
- 3 Configure the virtual network of virtual machine**
- 4 Configure the virtual disk of virtual machine**
- 5 Establish connectivity to the virtual machine**
- 6 Run the Appliance Manager initial configuration wizard**
- 7 Deploying WOC in Bridge/Single-Arm Mode**

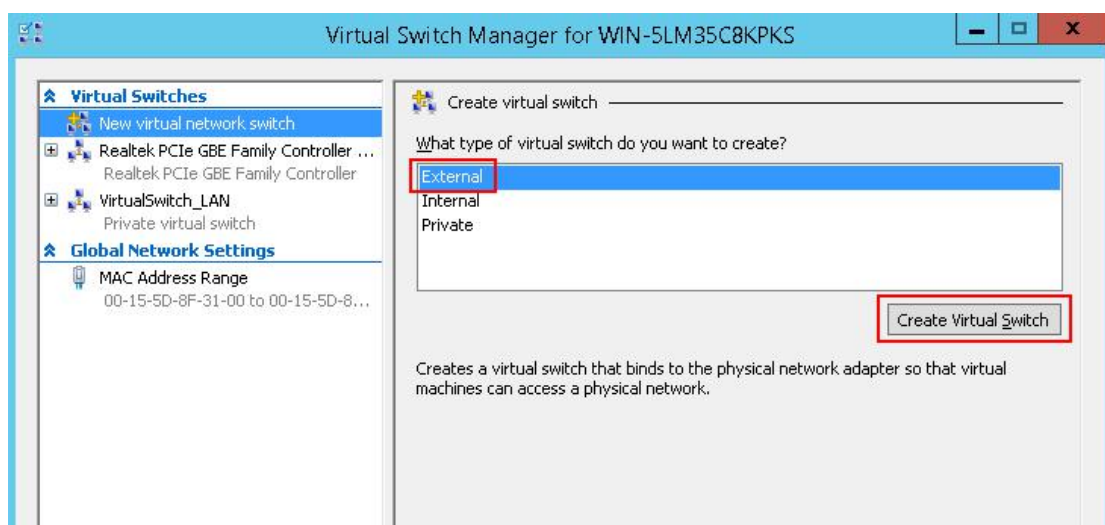
1. Create the virtual network

1) In the Hyper-V Manager, click Virtual Switch Manager.

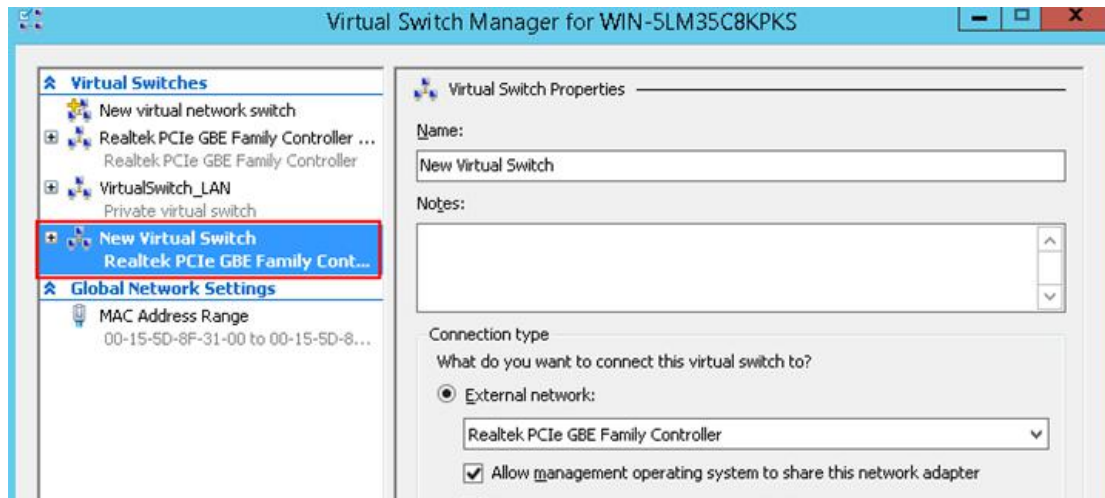


The Virtual Switch Manager appears.

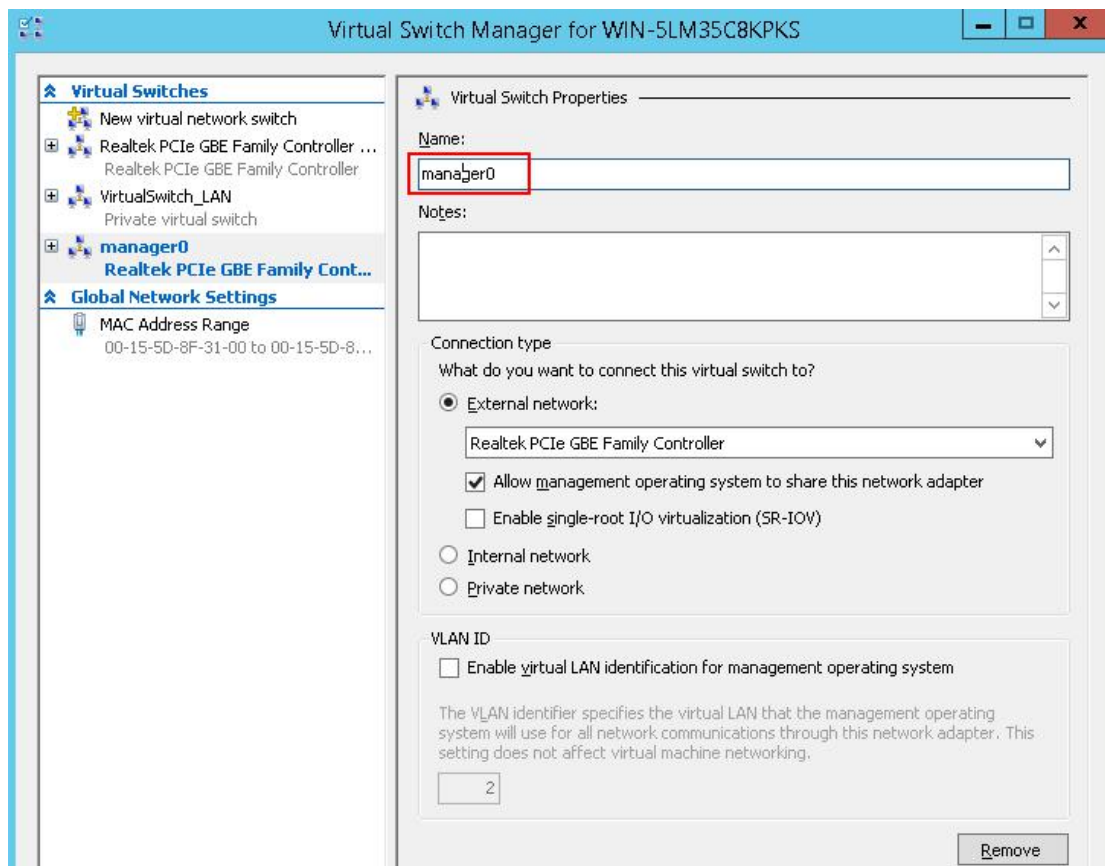
2) Select Private land click Create Virtual Switch.



A new virtual switch appears in the left pane, with Virtual Switch Properties in the right pane.



3) Enter (or select) the following:



Name: manager0

External network: .

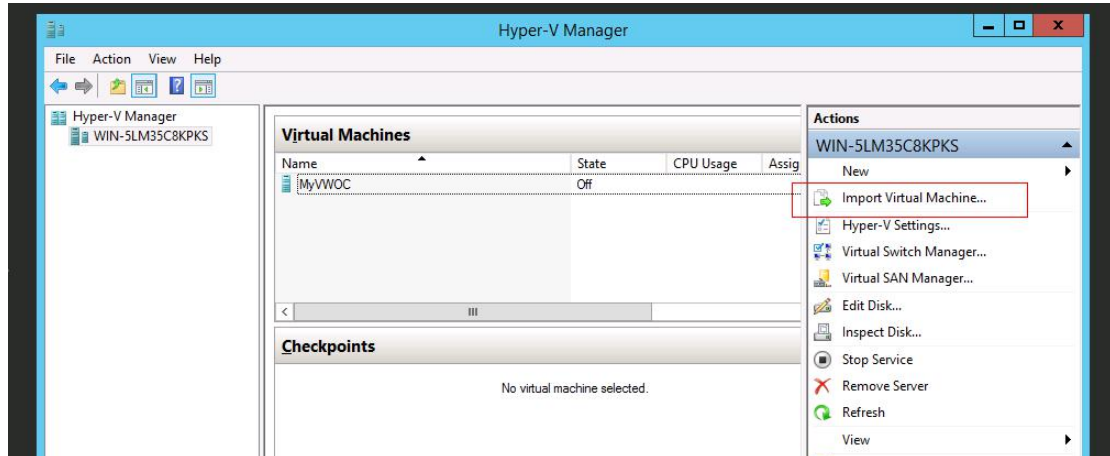
[select your appropriate network from the drop-down list]

Allow management operating system to share this network adapter

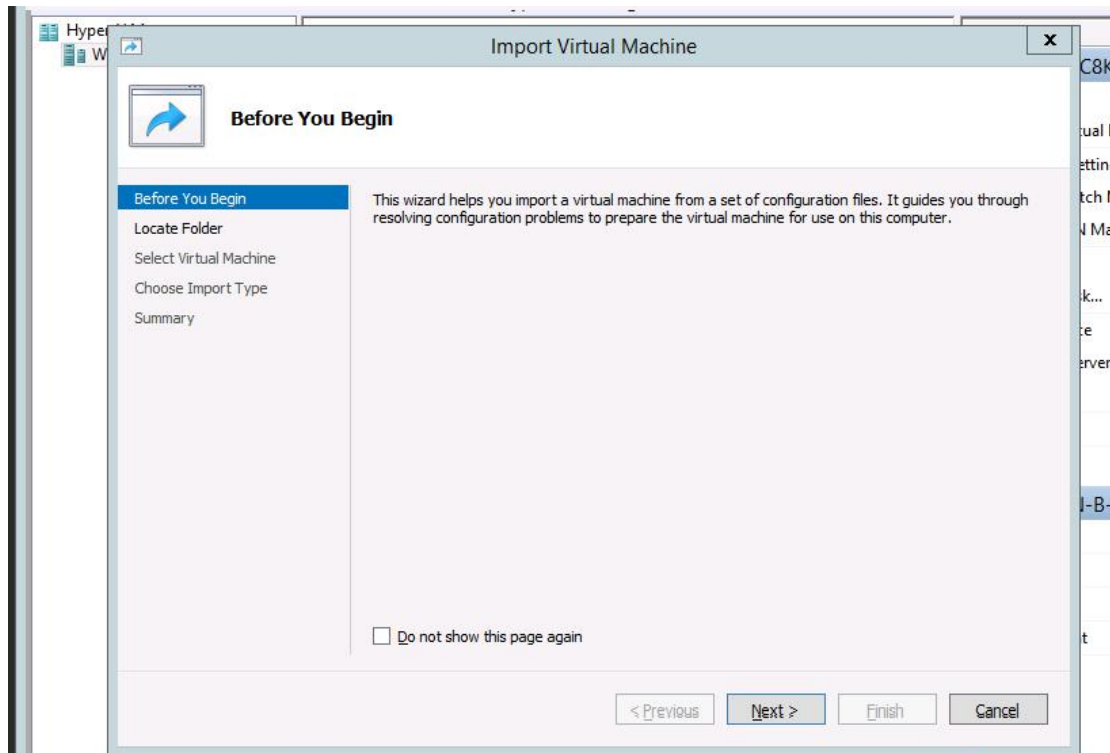
4) Click OK. The changes are applied and the window closes. You've just created the virtual switch for manager0.

2. Create Virtual Machine

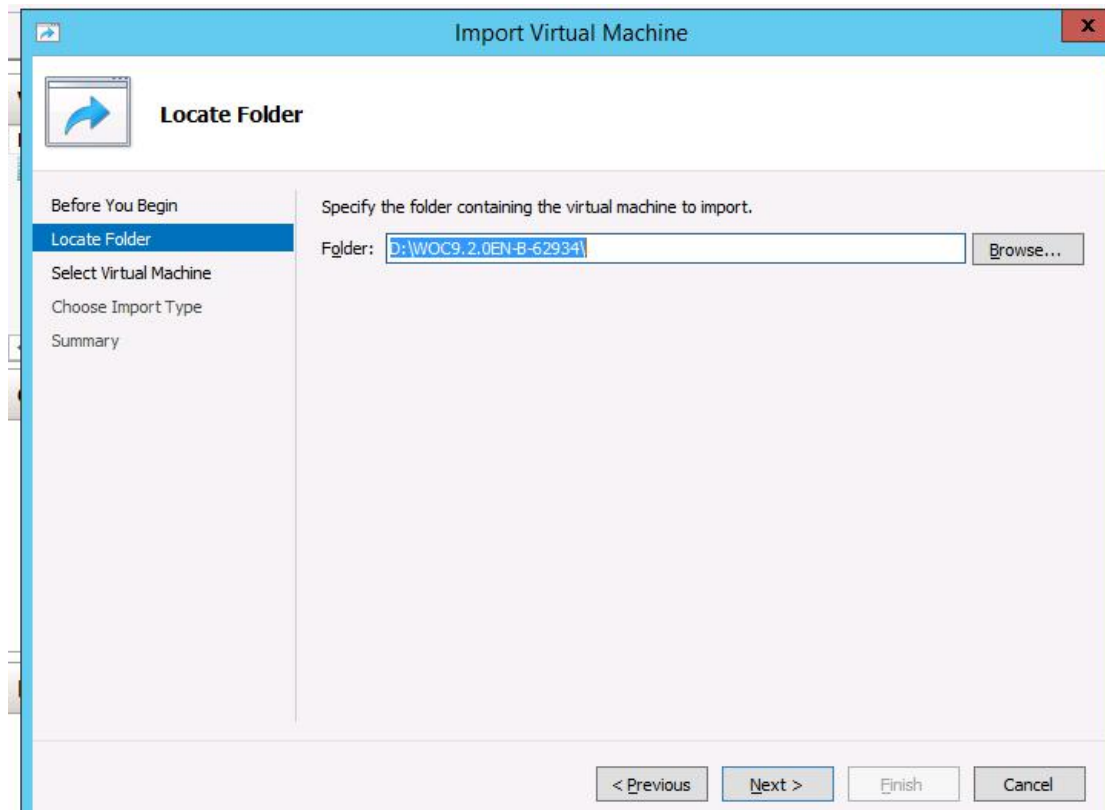
1) Select Import Virtual Machine as follows:



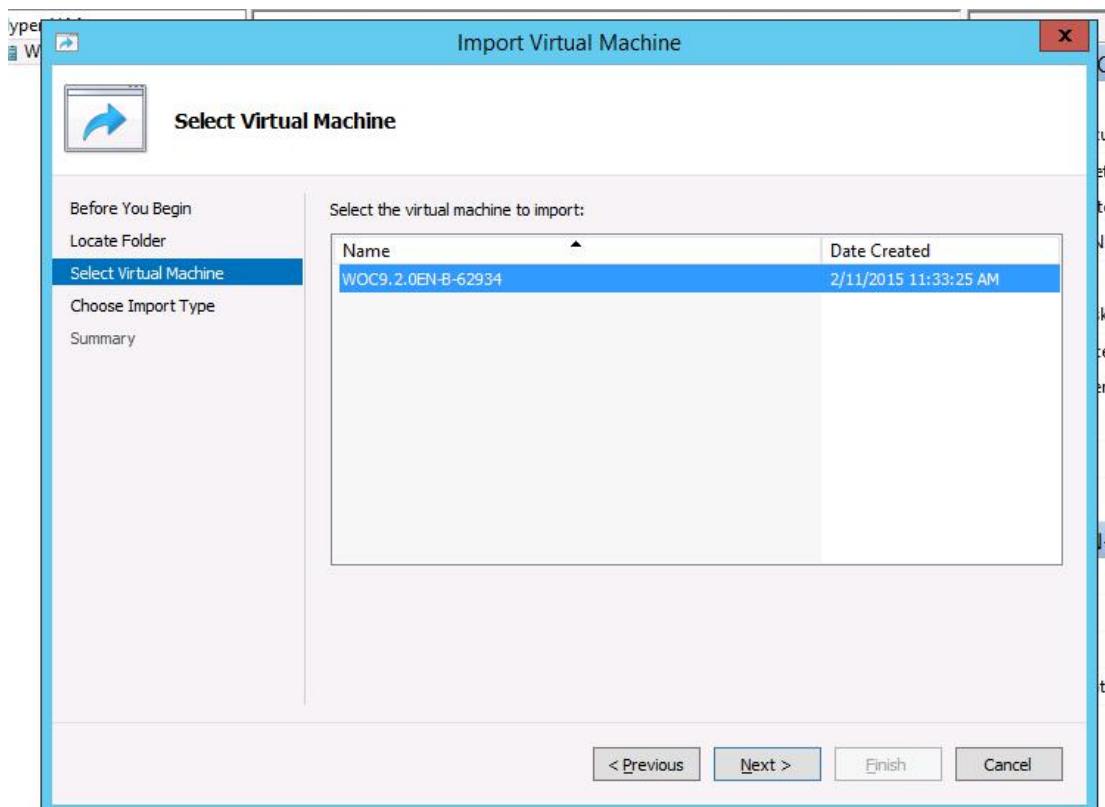
2) Click Next



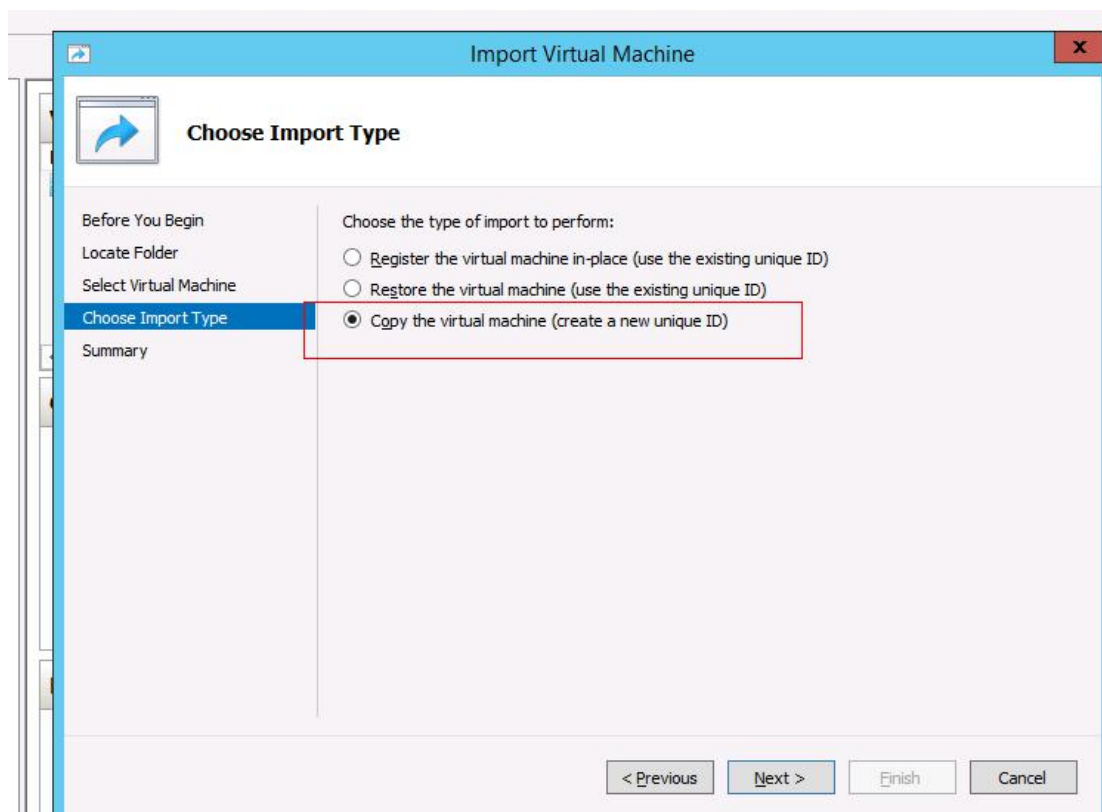
3) Unzip our [Hyper-V]WOC9.2.0EN-B-62934.zip, and select the folder as follows.



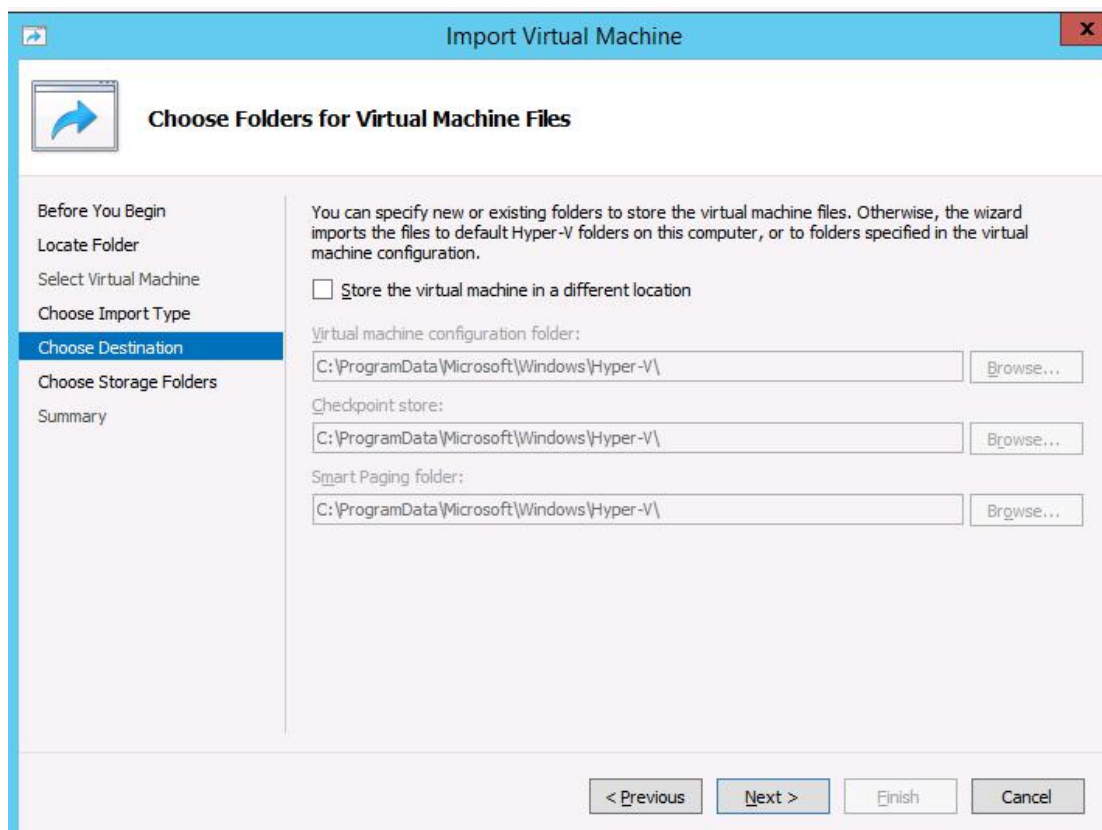
4) Select Virtual Machine



5) Choose Import Type



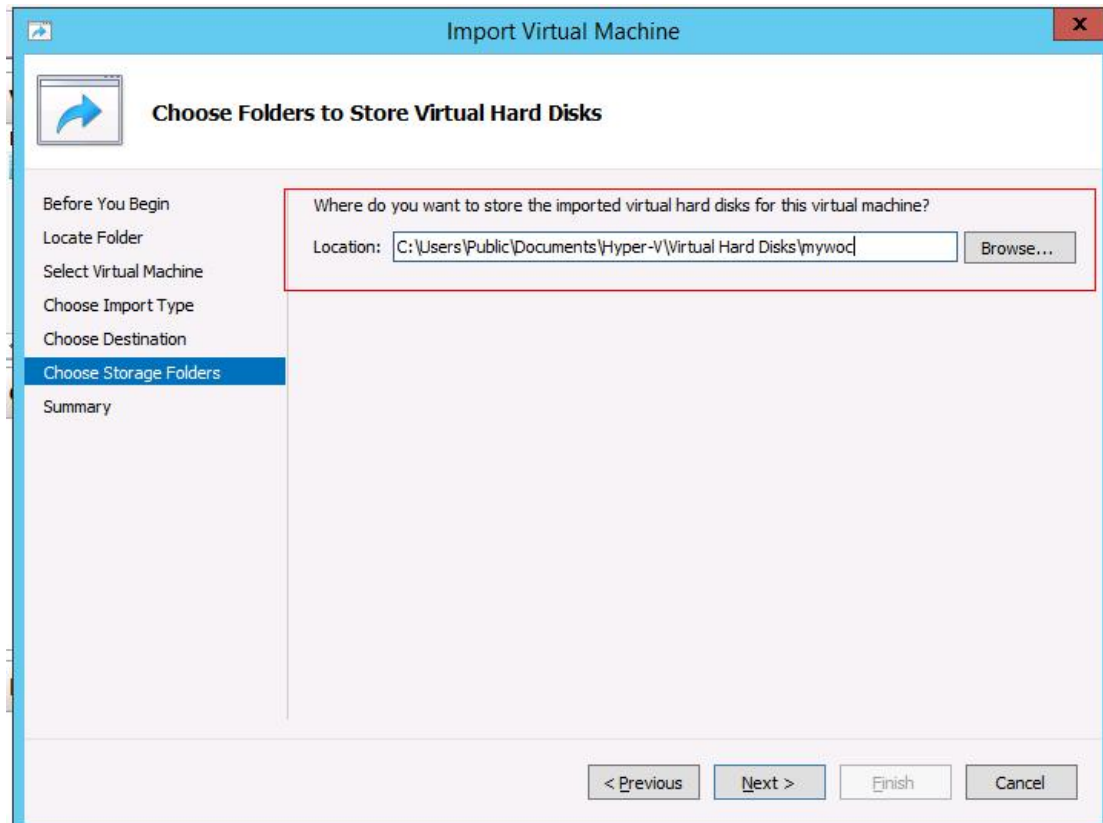
6) Choose Destination



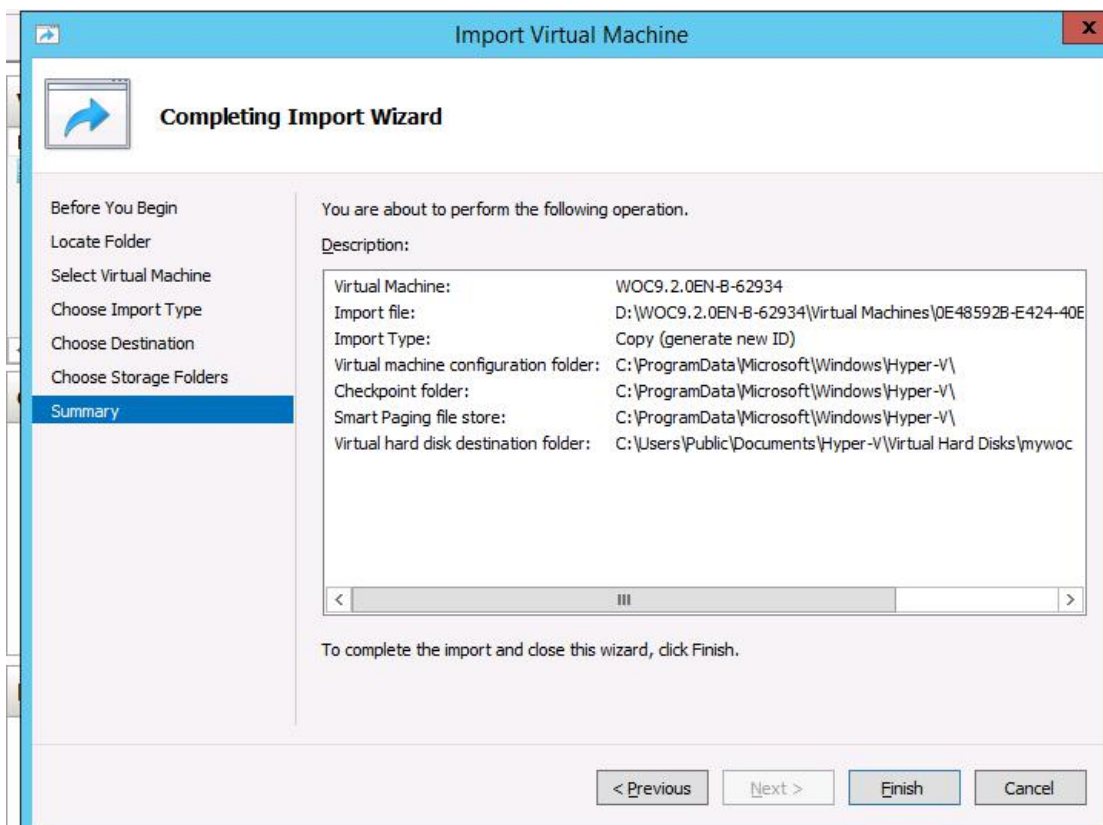
The screenshot shows the 'Import Virtual Machine' wizard window. The title bar is blue with the text 'Import Virtual Machine' and a close button. The main area has a light blue header with a blue arrow icon and the text 'Choose Folders for Virtual Machine Files'. On the left is a sidebar with a list of steps: 'Before You Begin', 'Locate Folder', 'Select Virtual Machine', 'Choose Import Type', 'Choose Destination' (highlighted in blue), 'Choose Storage Folders', and 'Summary'. The main content area has a light blue background. It starts with a paragraph: 'You can specify new or existing folders to store the virtual machine files. Otherwise, the wizard imports the files to default Hyper-V folders on this computer, or to folders specified in the virtual machine configuration.' Below this is a checkbox labeled 'Store the virtual machine in a different location'. Then there are three sections, each with a label and a text box followed by a 'Browse...' button: 'Virtual machine configuration folder:' with 'C:\ProgramData\Microsoft\Windows\Hyper-V\' in the text box; 'Checkpoint store:' with 'C:\ProgramData\Microsoft\Windows\Hyper-V\' in the text box; and 'Smart Paging folder:' with 'C:\ProgramData\Microsoft\Windows\Hyper-V\' in the text box. At the bottom right are four buttons: '< Previous', 'Next >', 'Finish', and 'Cancel'.

1. Choose Storage Folders

The location should be changed as follows.



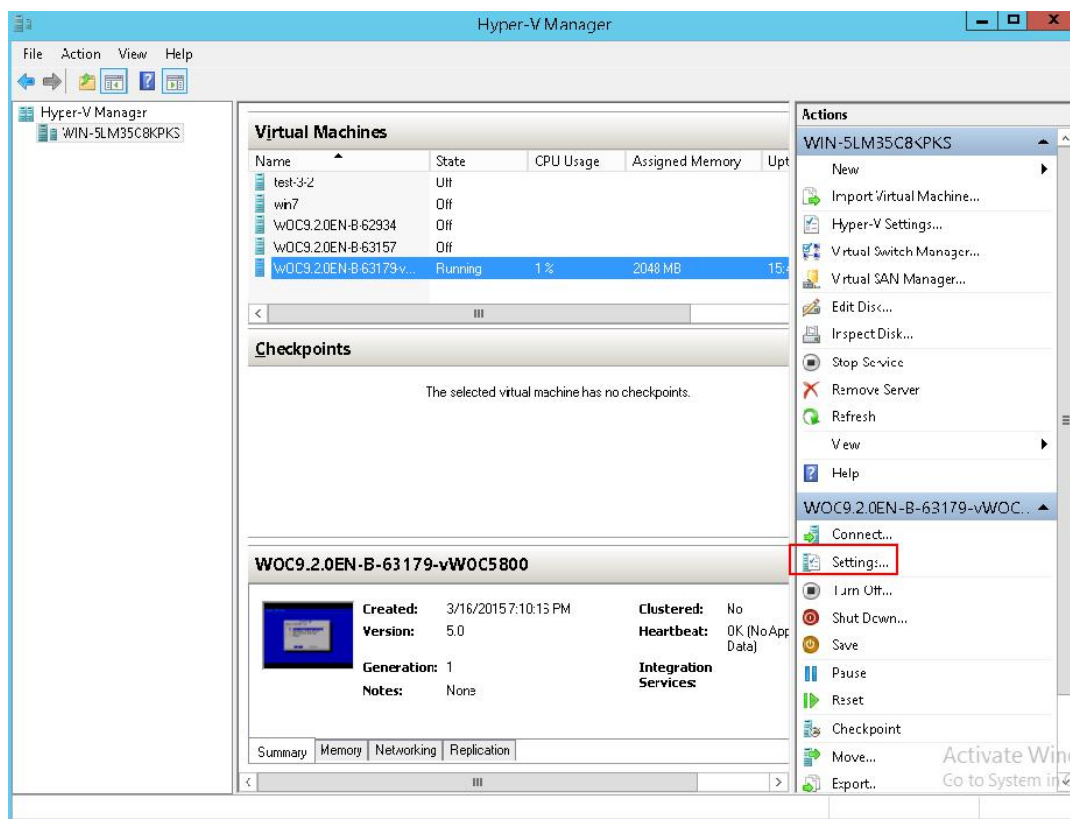
8) Summary



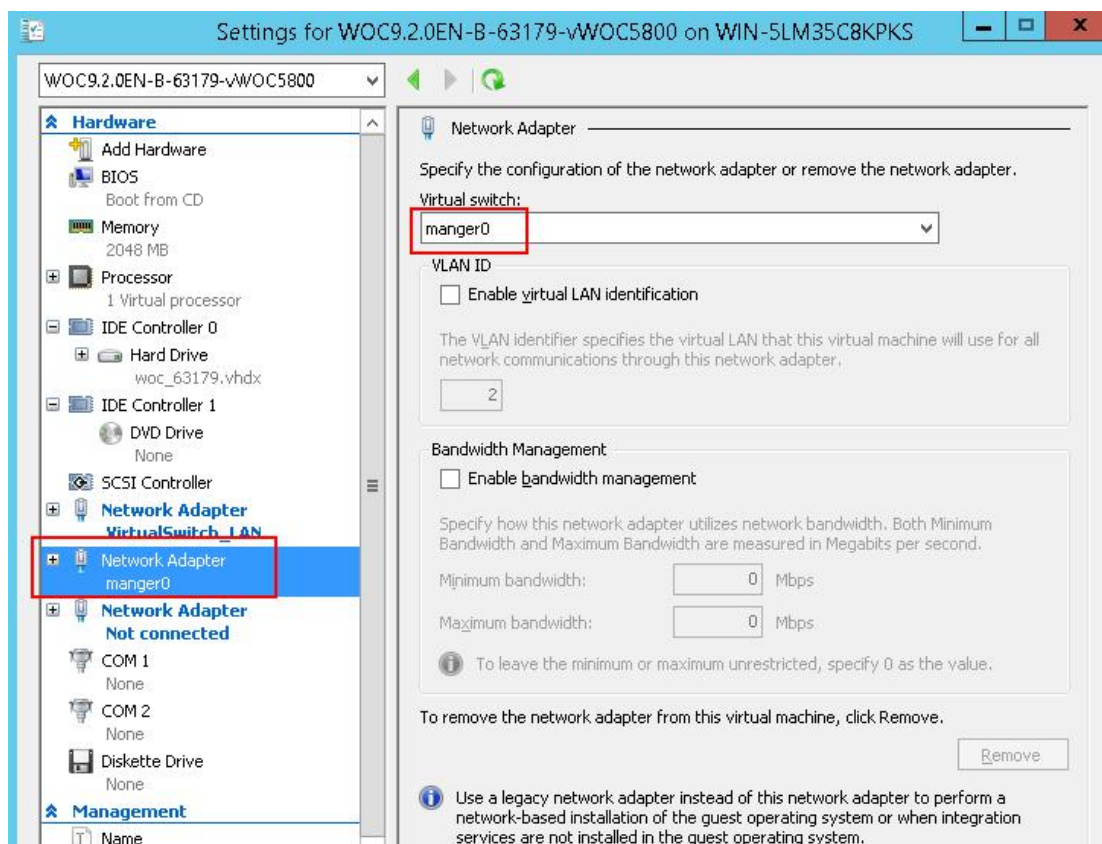
Click Finish, The basic configuration is over.

3. Configure the virtual network of virtual machine

1) In the Hyper-V Manager, click Virtual Switch Manager.



2) Specify the configuration of network adapter for manager0.



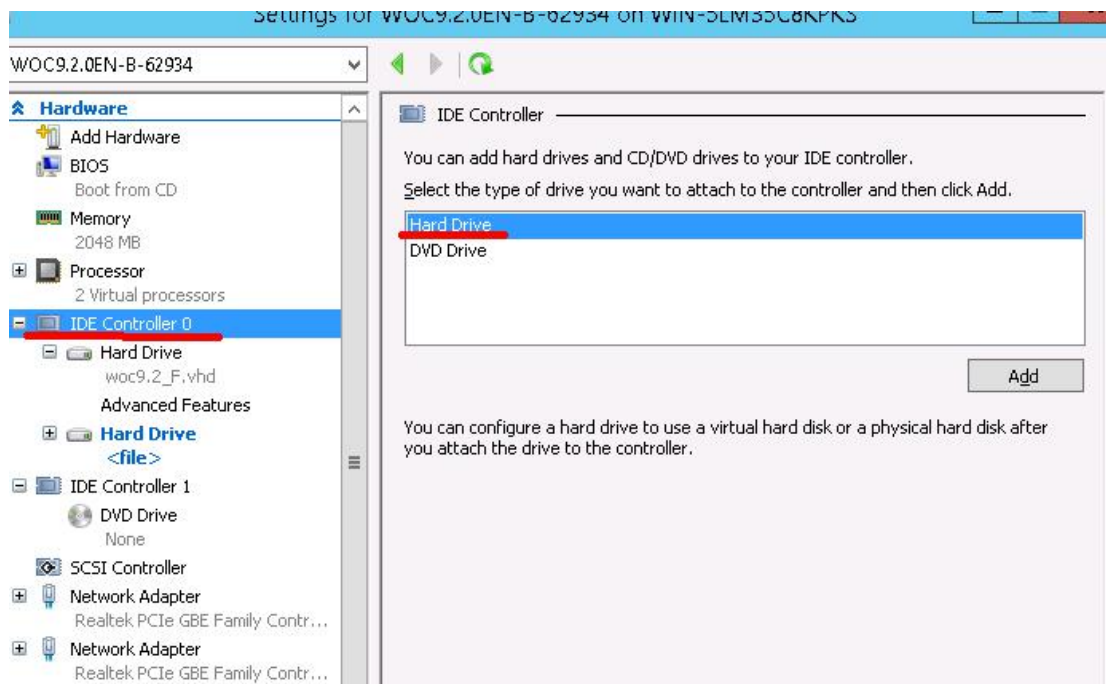
4. Configure the virtual disk of virtual machine

Now, you need to add a hard disk for Network Memory(DataCache).

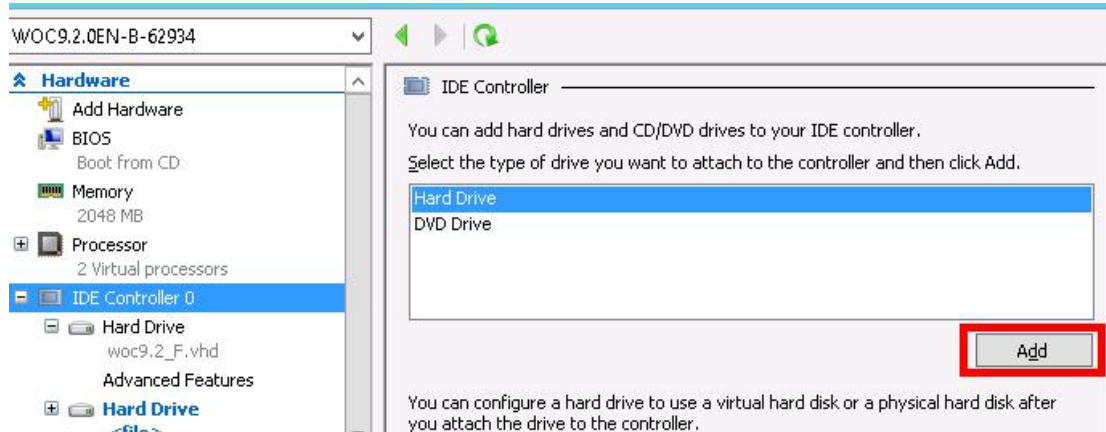
A summary of the sequence follows, with entries adjusted for Network Memory.

In the Settings for MyWoc window, do the following:

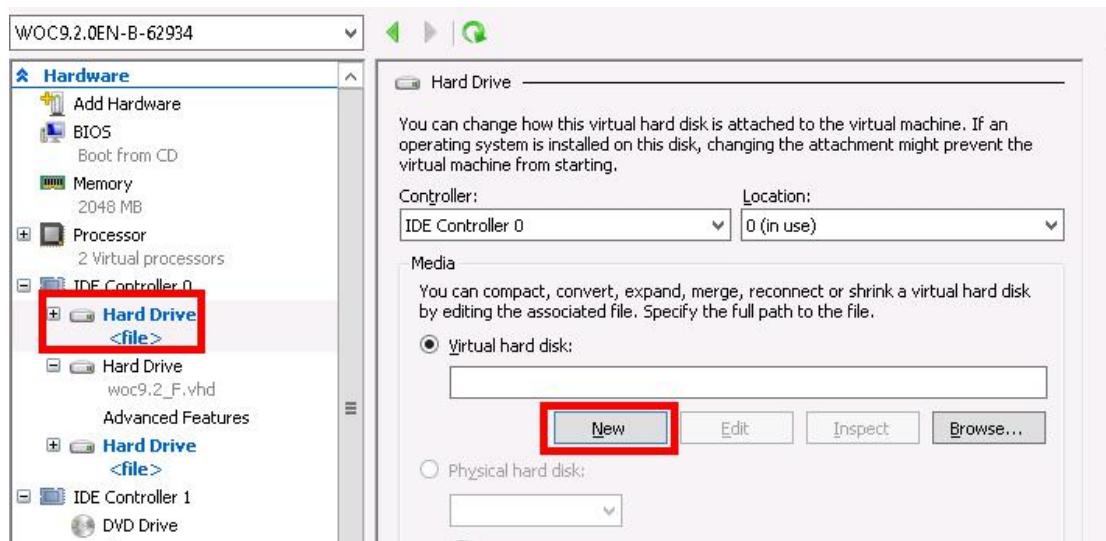
1. In the left pane, under Hardware, select IDE Controller . On the right, select Hard Drive.



2. Click Add. The left pane now shows the addition of the hard drive for IDE Controller 0.



3. In the Hard Drive section on the right, make sure that Virtual hard disk is selected and click New.



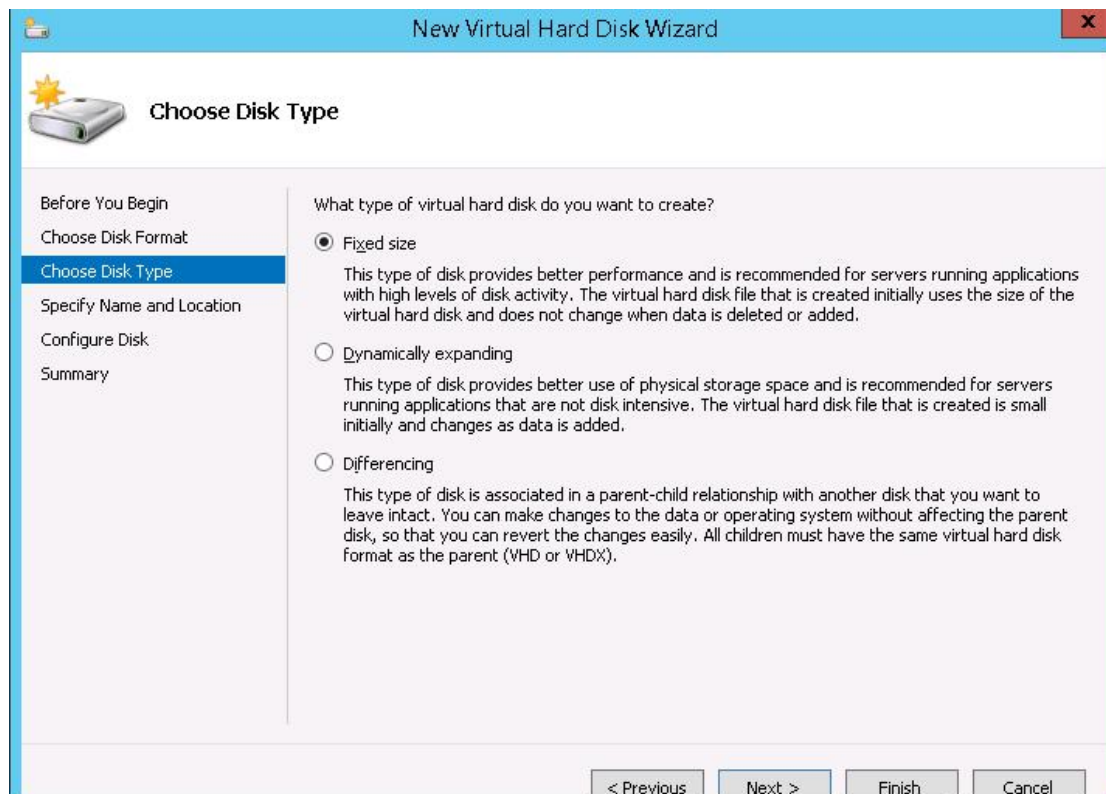
5) The New Virtual Hard Disk Wizard appears.

6) Click Next. The Choose Disk Format screen appears.

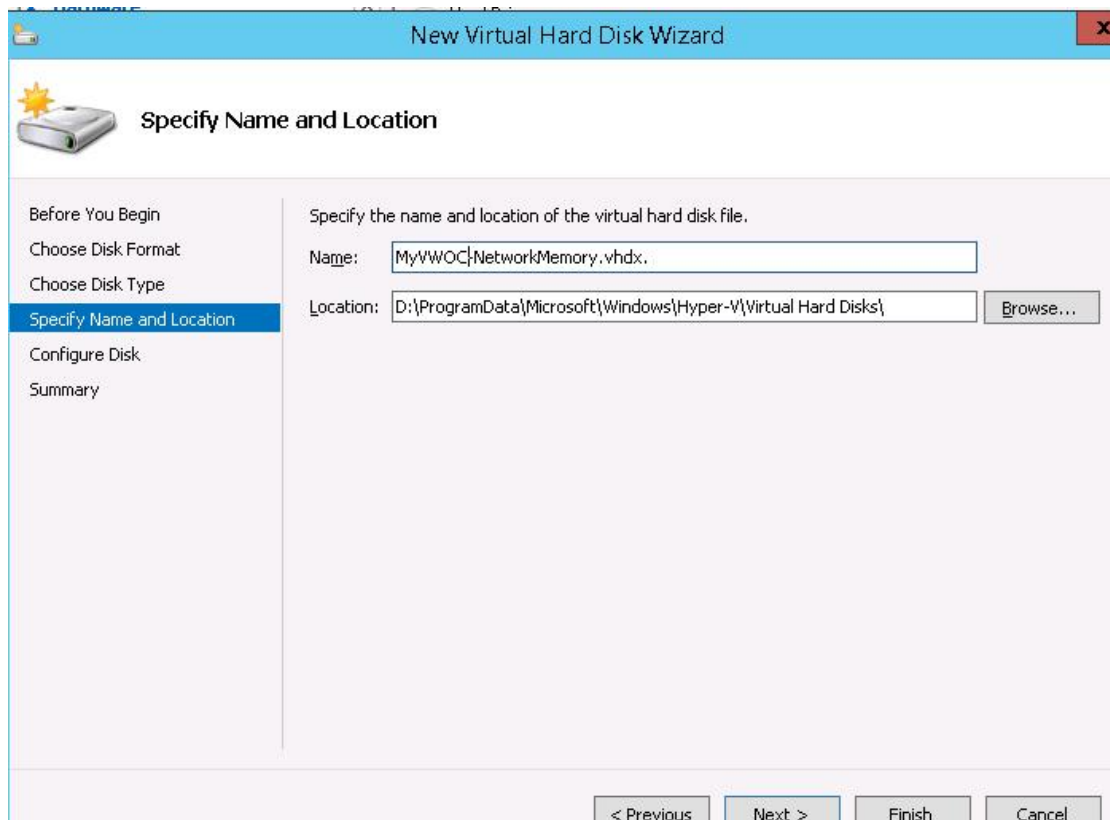
7) Select VHDX and click Next.



8) The Choose Disk Type screen appears.



3) Select Fixed size and click Next. The Specify Name and Location screen appears. In the Name field, change New Virtual Hard Disk.vhdx to MyVWOC-NetworkMemory.vhdx.



New Virtual Hard Disk Wizard

Specify Name and Location

Before You Begin
Choose Disk Format
Choose Disk Type
Specify Name and Location
Configure Disk
Summary

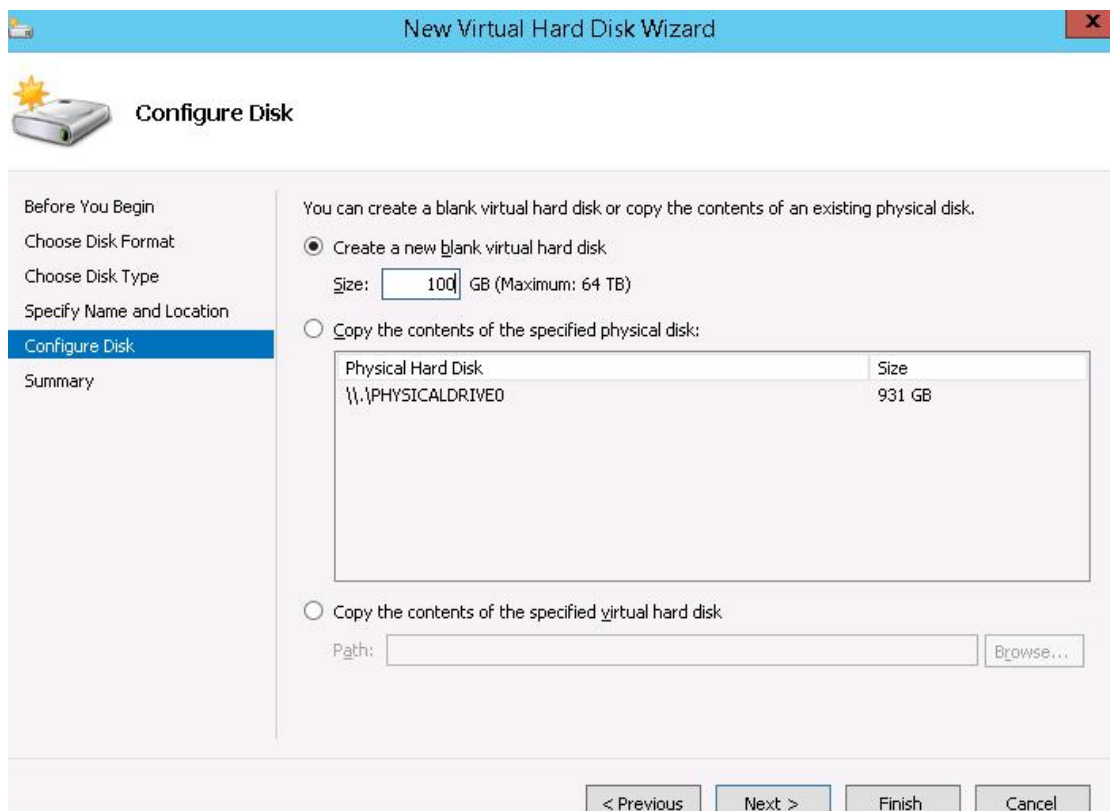
Specify the name and location of the virtual hard disk file.

Name:

Location:

< Previous Next > Finish Cancel

11) Click Next. The Configure Disk screen appears.



New Virtual Hard Disk Wizard

Configure Disk

Before You Begin
Choose Disk Format
Choose Disk Type
Specify Name and Location
Configure Disk
Summary

You can create a blank virtual hard disk or copy the contents of an existing physical disk.

☒ Create a new blank virtual hard disk
Size: GB (Maximum: 64 TB)

☐ Copy the contents of the specified physical disk:

Physical Hard Disk	Size
\\.\PHYSICALDRIVE0	931 GB

☐ Copy the contents of the specified virtual hard disk
Path:

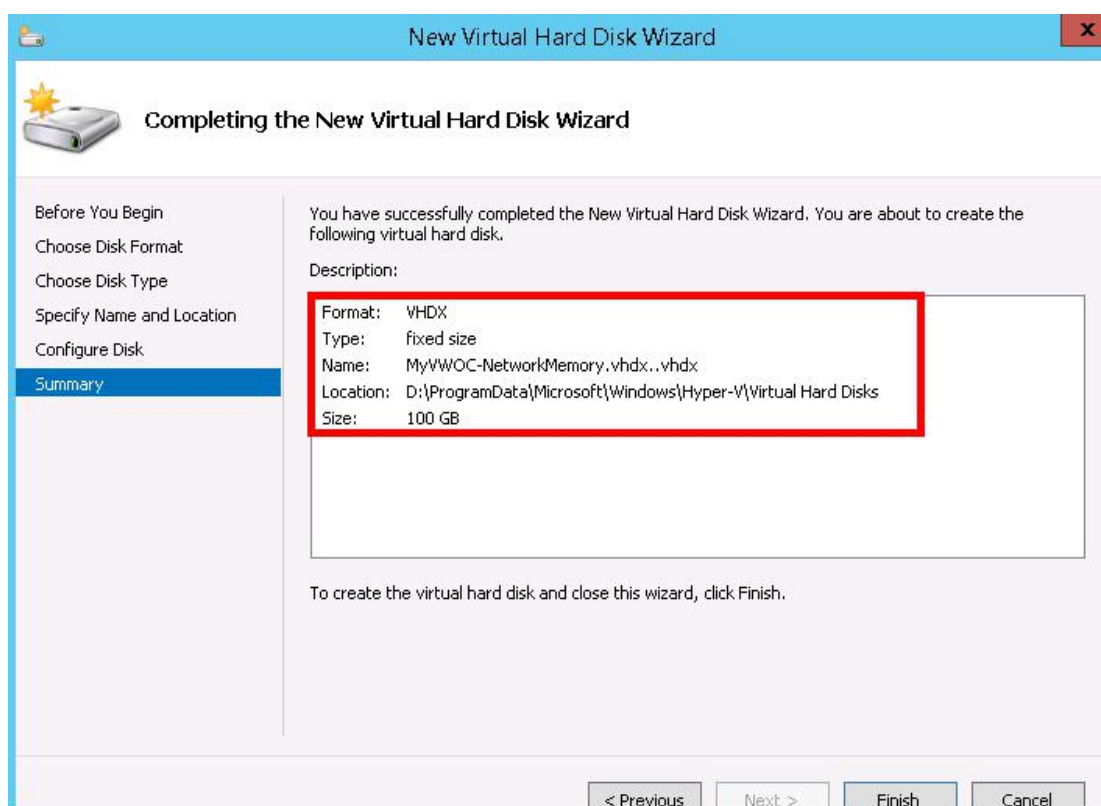
< Previous Next > Finish Cancel

12) Select Create a new blank virtual hard disk, and in the Size field, enter 100(for 100GB of Network Memory).

(Refer to the VWOC Requirements document for models other than the 100GB.)

Model	WAN Bandwidth	Optimized flows	Gateways	Processor Cores (>1.8 GHz)		Memory (Gigabytes)		Storage			NIC	VMware	Hyper-V	
				Recommended	Range	Recommended	Range	Cache Disk Size(GB)	Performance (IOPS)	Throughput (MB/s)				
vWOC-5000	10 Mbps	1500	10	4	1, 2 -	4	2 - 256	100	2000	100 -	25 -	3	✓	✓
vWOC-5400	50 Mbps	4000	100	4	1, 2 -	7	4 - 256	100	2000	200 -	50 -	3	✓	✓
vWOC-5600	100 Mbps	8000	300	8	4, 8 -	14	4 - 256	250	2000	500 -	125 -	3	✓	✓
vWOC-5800	200 Mbps	20000	500	8	4, 8 -	14	8 - 256	250	2000	1000 -	250 -	3	✓	✓

a. Click Next. The Completing the New Virtual Hard Disk Wizard screen appears, summarizing the configuration parameters.



New Virtual Hard Disk Wizard

Completing the New Virtual Hard Disk Wizard

Before You Begin
Choose Disk Format
Choose Disk Type
Specify Name and Location
Configure Disk
Summary

You have successfully completed the New Virtual Hard Disk Wizard. You are about to create the following virtual hard disk.

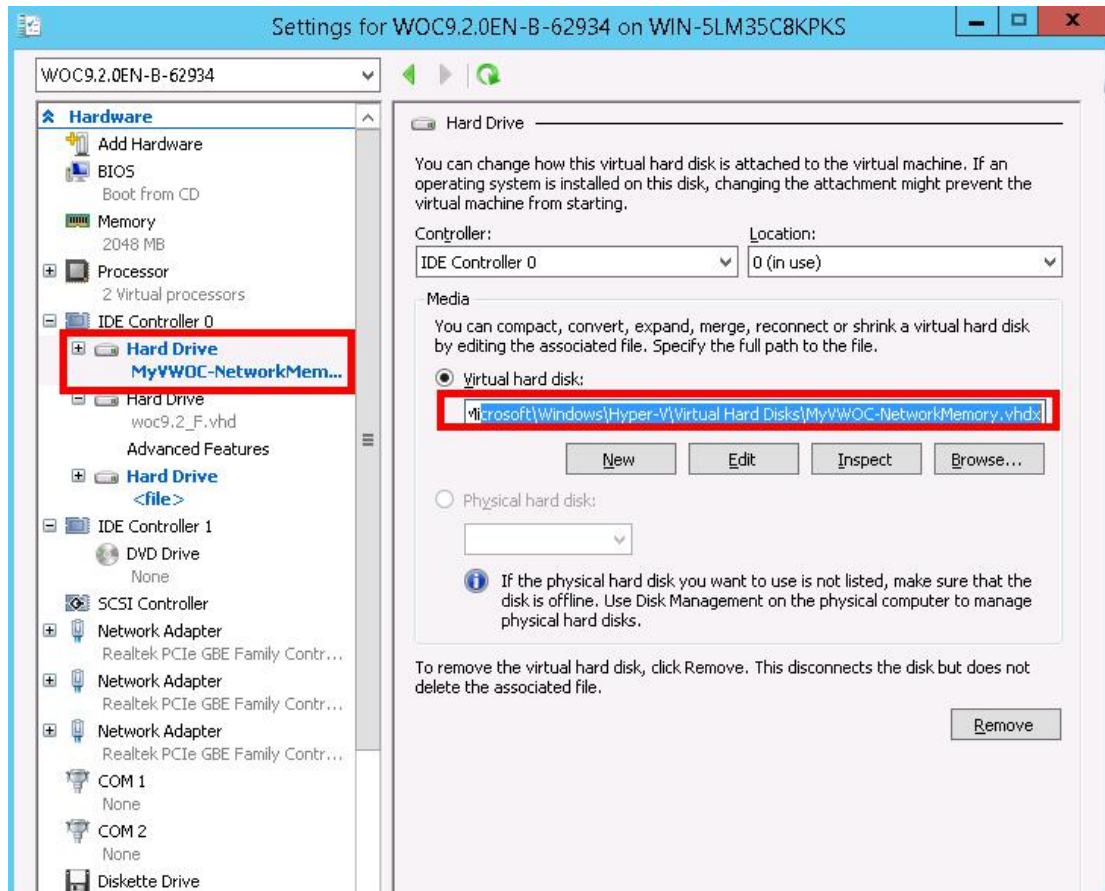
Description:

Format: VHDX
Type: fixed size
Name: MyVWOC-NetworkMemory.vhdx...vhdx
Location: D:\ProgramData\Microsoft\Windows\Hyper-V\Virtual Hard Disks
Size: 100 GB

To create the virtual hard disk and close this wizard, click Finish.

< Previous Next > **Finish** Cancel

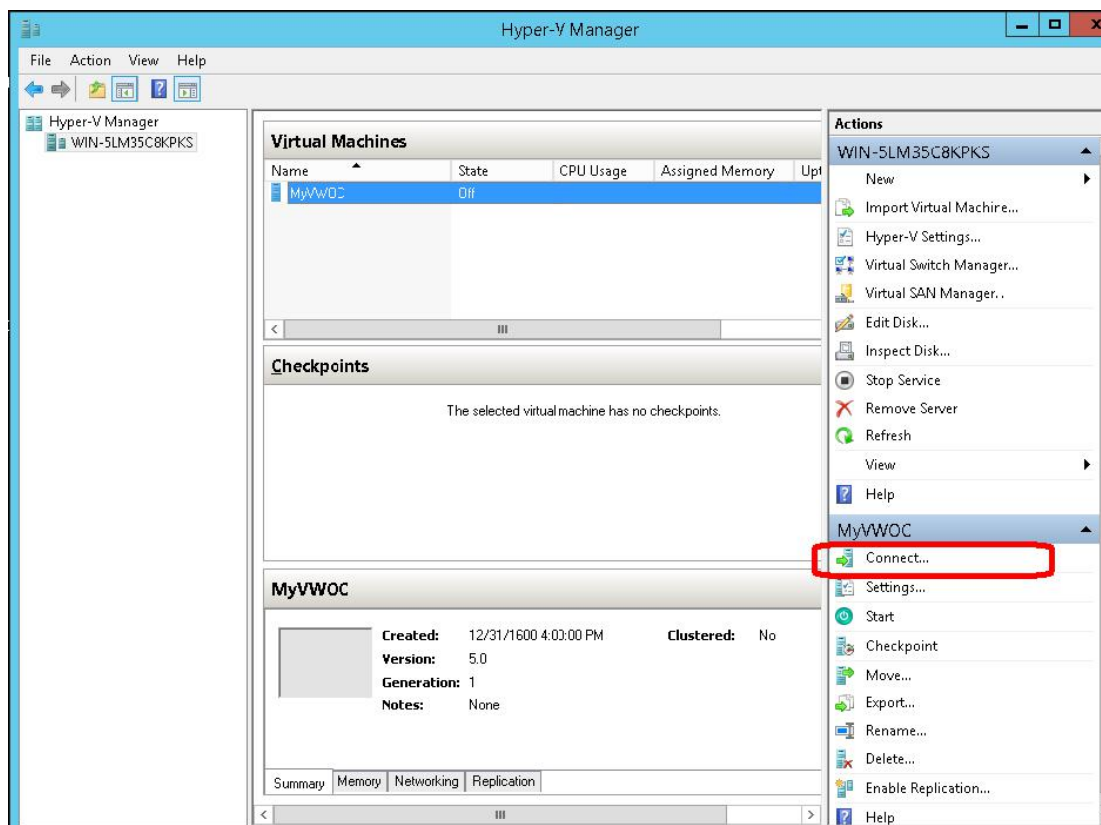
14) Click Finish. The wizard creates the new virtual hard disk and returns you to the Settings for MySilverPeak page, which displays the newly added second hard disk.



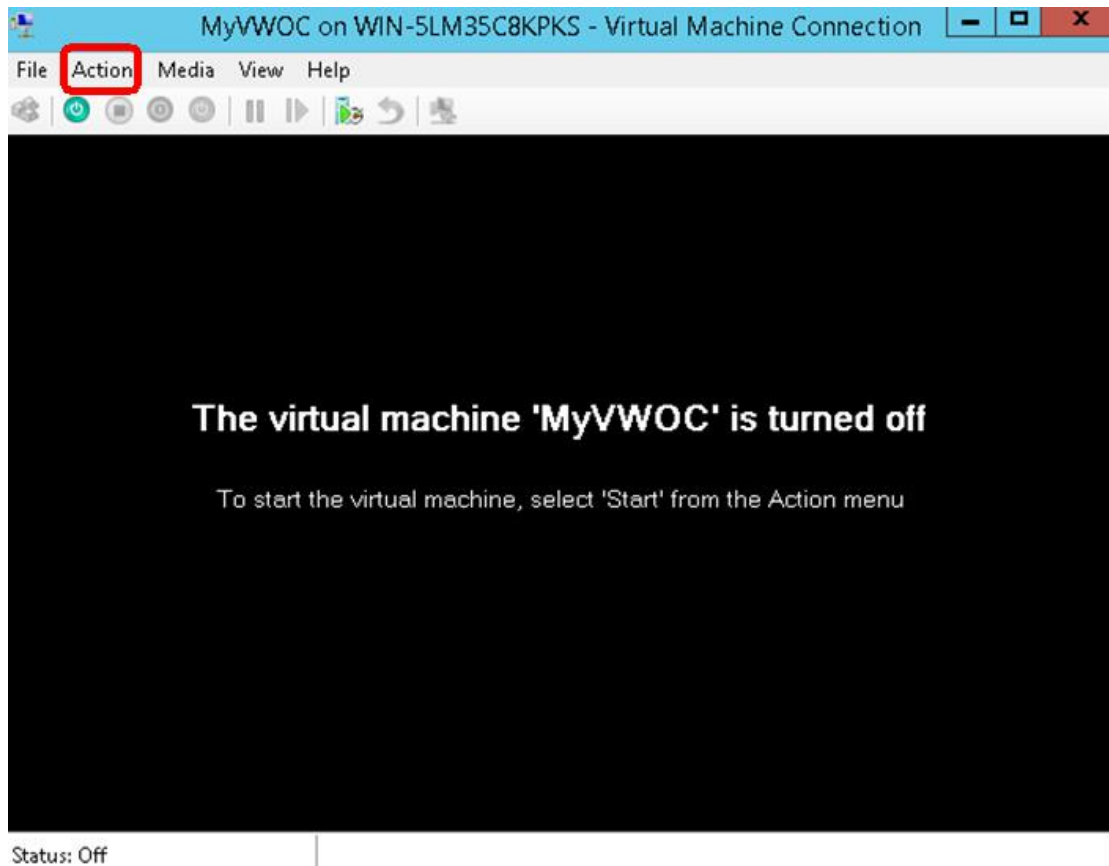
15) To save the addition, click Apply

5. Establish connectivity to the virtual machine

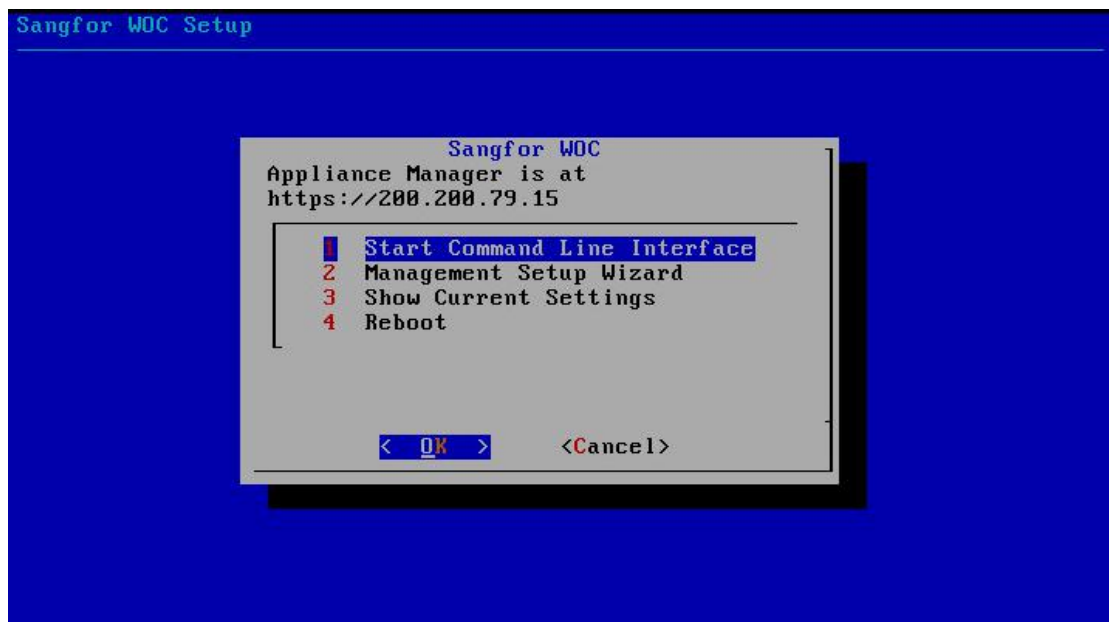
1) In the Virtual Machine section, select MyVWOC and click Connect.



2) If the virtual machine is off, you'll get a message to select Start from the Action menu.

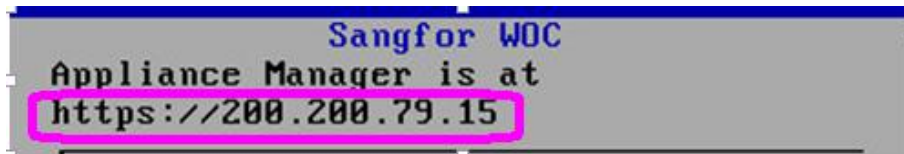


2). Click the Console tab. The VWOC Console User Interface appear

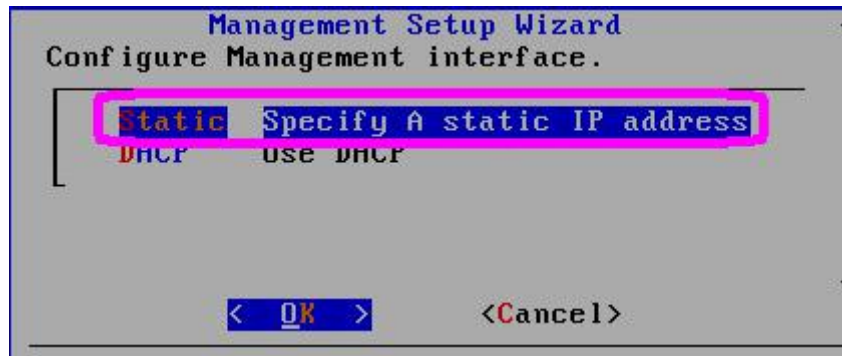


3). The next task is to determine the virtual appliance's IP address:

- If you're using **DHCP**, the virtual appliance IP address displays in VWOC's Console User Interface.



- If you're not using DHCP, then you must configure the static IP address and default gateway



In the virtual appliance console, press function key, **Enter**, and complete the remaining steps.

When prompted to choose the type of management interface, select Static(as opposed to DHCP).

After selecting Apply, you can review the settings by selecting **Cancel**.

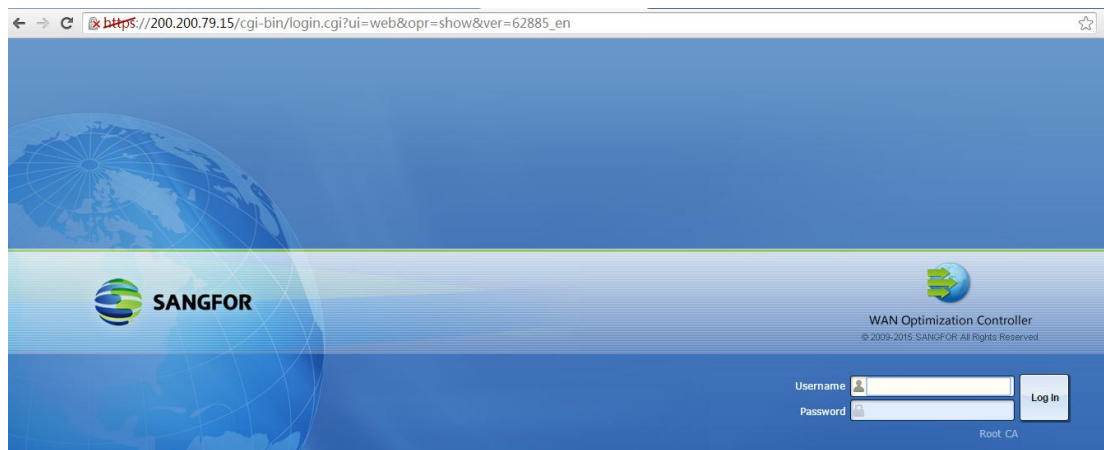
4). To verify connectivity, to select "Start command line interface" and enter the following command sequence:

```
IS: command not found!
[Sangfor-vcmd-WANACC9.2 EN B1$ help
Usage:
  help : h : ?      Show a list of commands that you can use.
  ping              Ping Test connectivity between the local device
                    and a remote device. Same as the ping command
                    of Linux.
  traceroute        View the path through which this device can
                    connect to other networks.Same as the traceroute
                    command of Linux.
  ip                 View and Set system network,Same as the ip
                    command of Linux.
  route             View system routing table the linux,
                    Same as the route command of Linux.
  arp               View device ARP table.
  ethtool            View the network interface,Same as the ethtool
                    command of Linux.
  clear             Clear the contents on the screen.
  exit              Return to graphical interface.
```

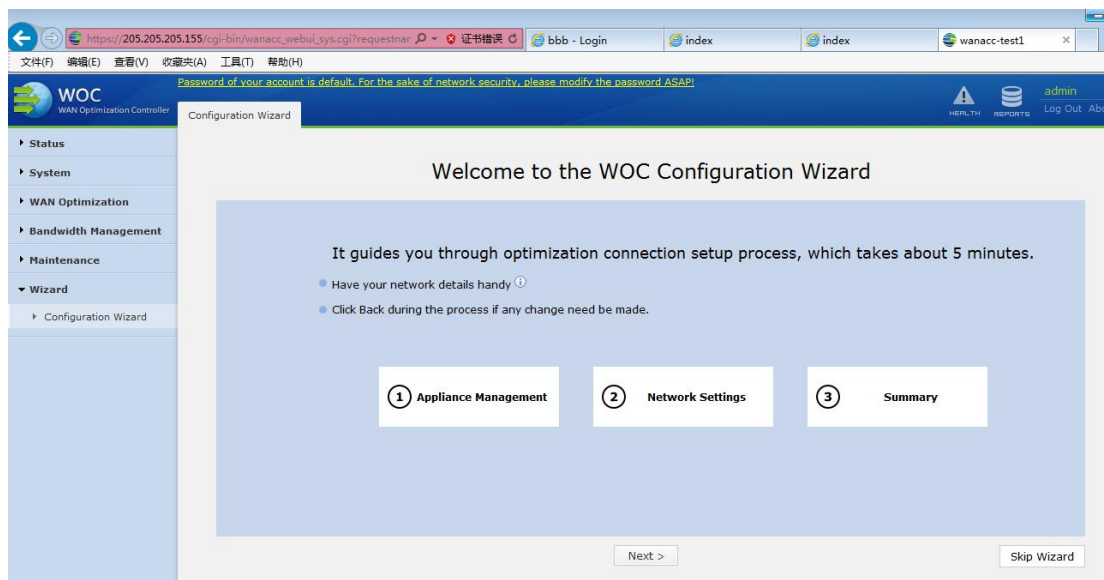
You are now ready to complete the VWOC virtual appliance initial configuration wizard

6 Run the Appliance Manager initial configuration wizard

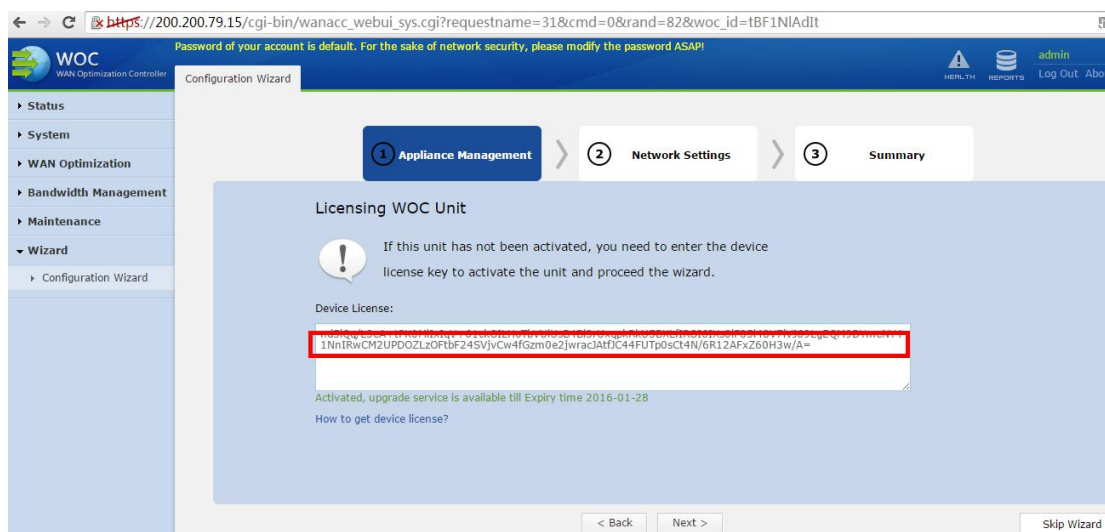
1) In a browser, enter the IP address that you just discovered or configured. The VWOC Appliance Management Console login page appears.



2). For both the User Name and Password, enter admin. The initial configuration wizard appears.



3) You need to input license to continue.



4). Complete the remaining wizard screens.

5). On the last wizard screen, click Apply. When the virtual appliance asks permission to reboot, allow it.

The Appliance Manager takes a few minutes to reboot and return to the login page.

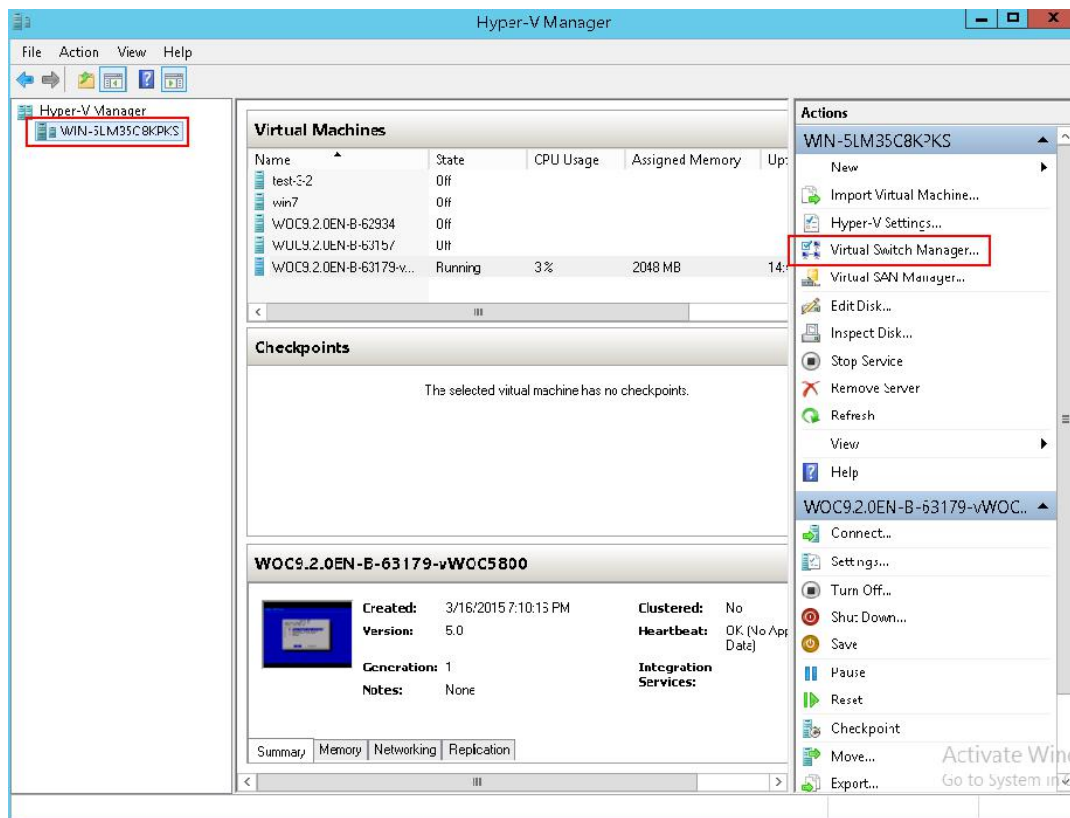
You are now ready to start using the appliance

7. Deploying WOC in Bridge/Single-Arm Mode

This section introduces how to deploy and configure the vSphere Client when virtual WOC is deployed in **Bridge, Single-Arm** mode.

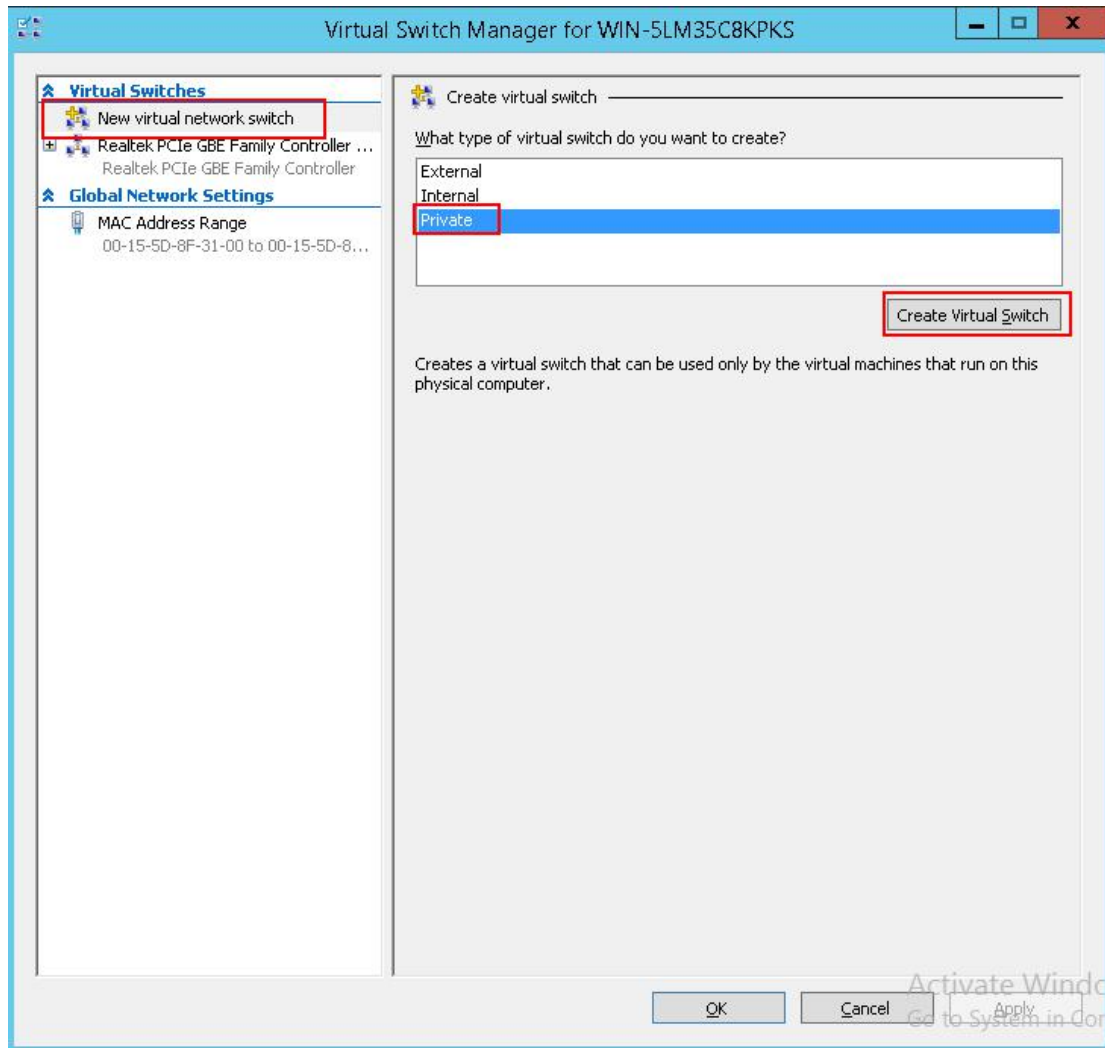
7.1 Create the virtual network

1) In the Hyper-V Manager, click Virtual Switch Manager.



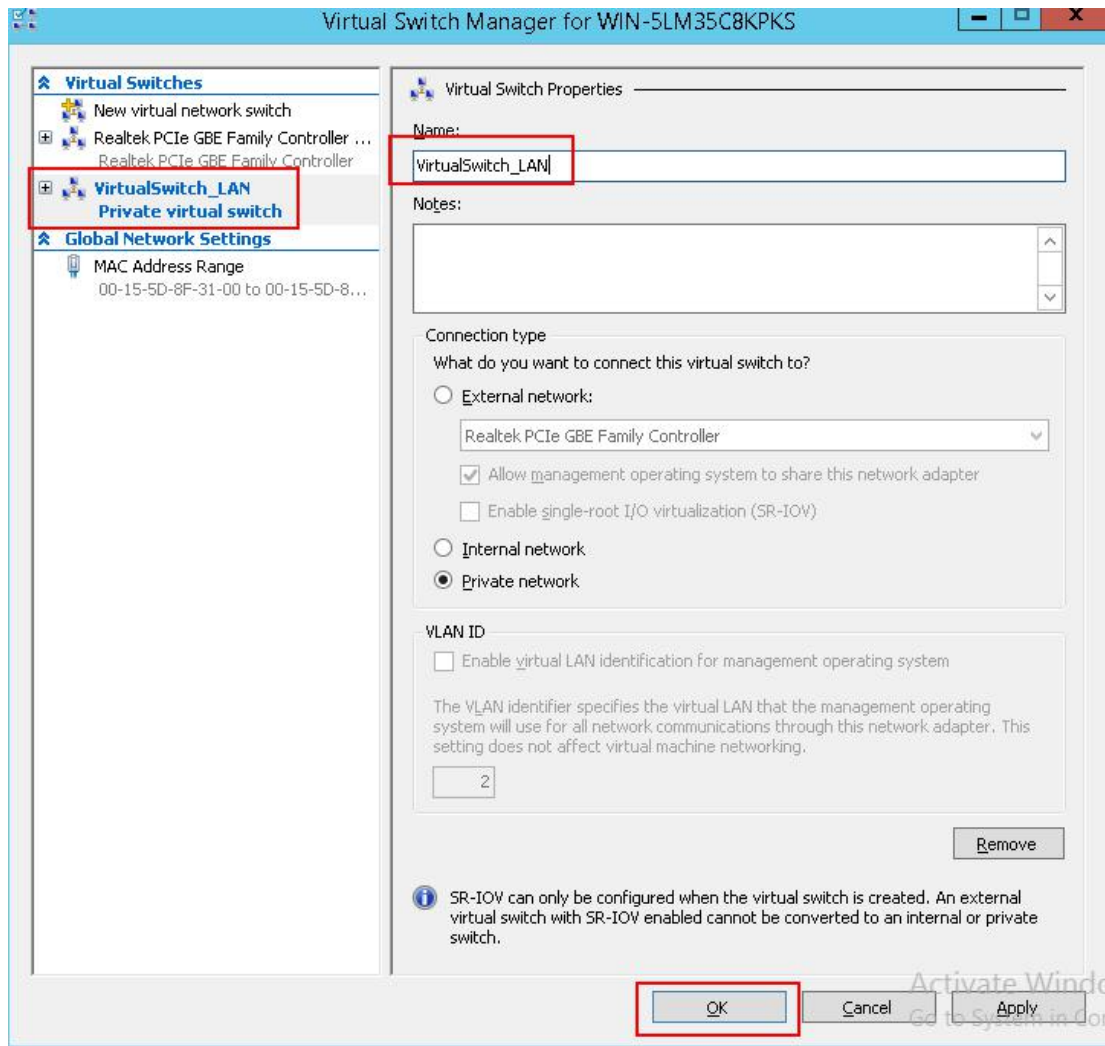
The Virtual Switch Manager appears.

2) Select Private and click Create Virtual Switch.



A new virtual switch appears in the left pane, with Virtual Switch Properties in the right pane.

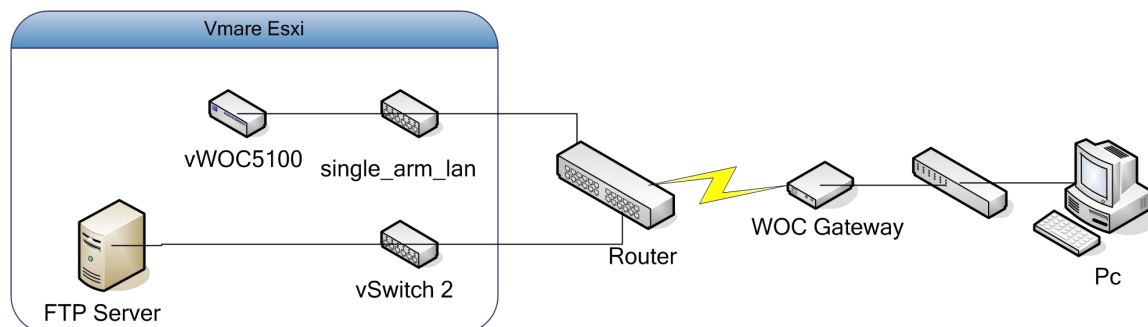
3) Enter (or select) the following:



4) Click OK. The changes are applied and the window closes. You've just created the virtual switch for VirtualSwitch_LAN.

7.2 Virtual WOC Deployed in Single-Arm Mode

7.2.1 Deployment Scenario

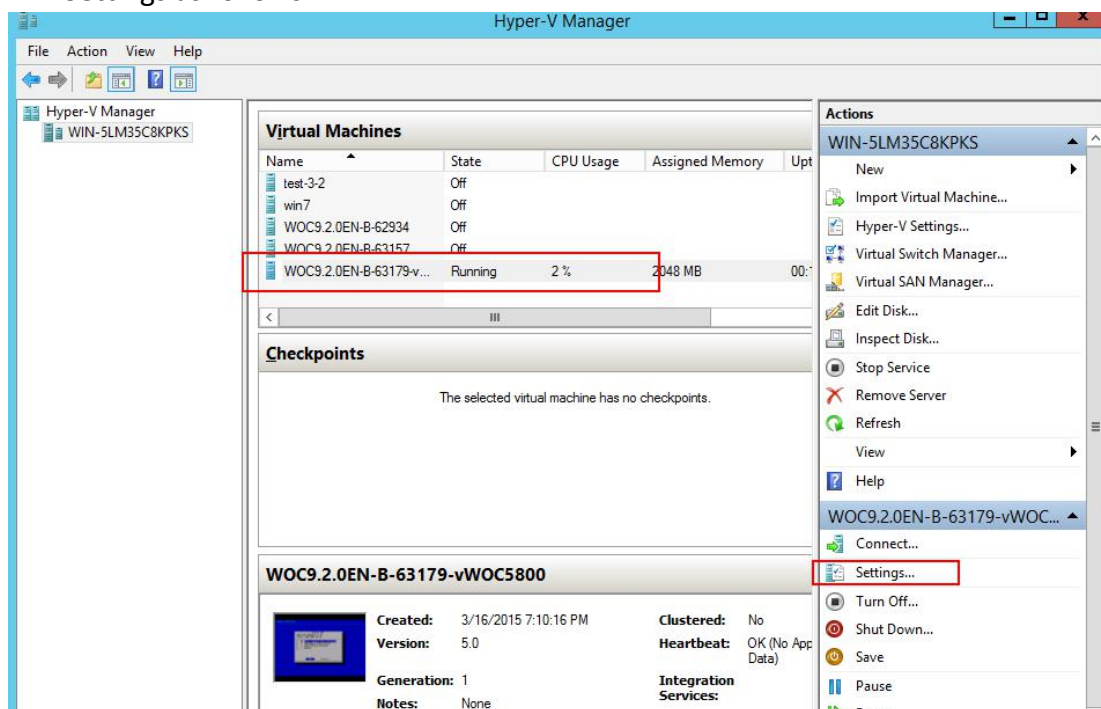


Note that the two virtual machine switches of Hyper-V can be mapped to one physical network adapter or a virtual machine port group.

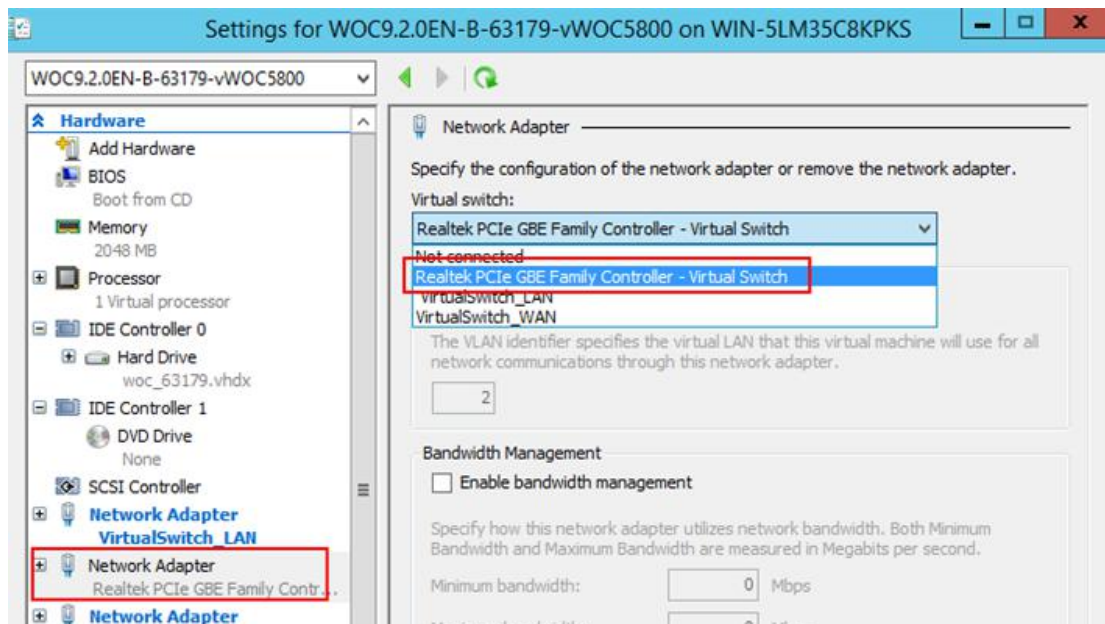
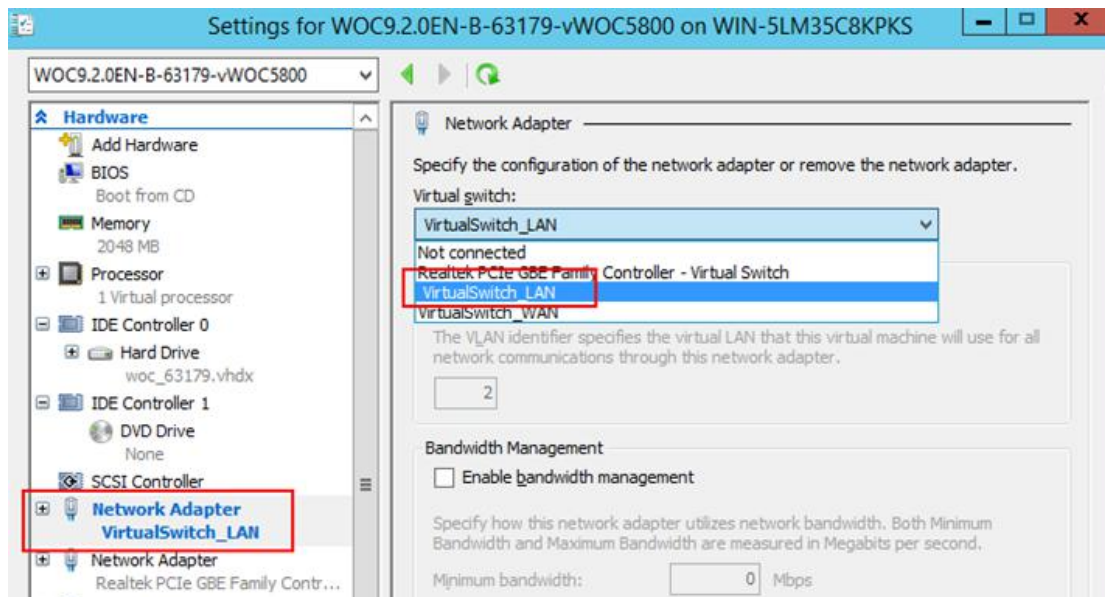
7.2.2 Configuration for Virtual WOC in Single-Arm Mode

To associate the virtual WOC with a network adapter, you need to add a virtual machine port group and associate it with the virtual WOC. The port group provides networking for virtual machines. Perform the following steps:

1. Log in to Hyper-V Manager. Select the VWoc which you import before. Click Settings as follows.

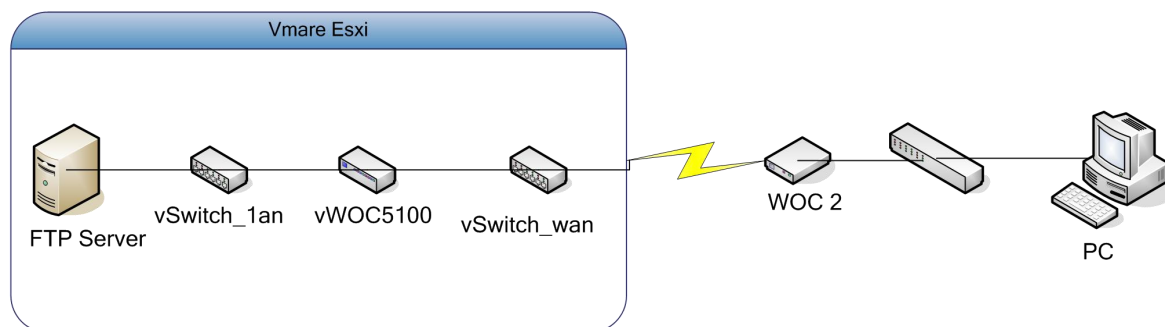


2. Specify the configuration of the network adapter as follows.



7.3 Virtual WOC Deployed in Bridge Mode

7.3.1 Deployment Scenario

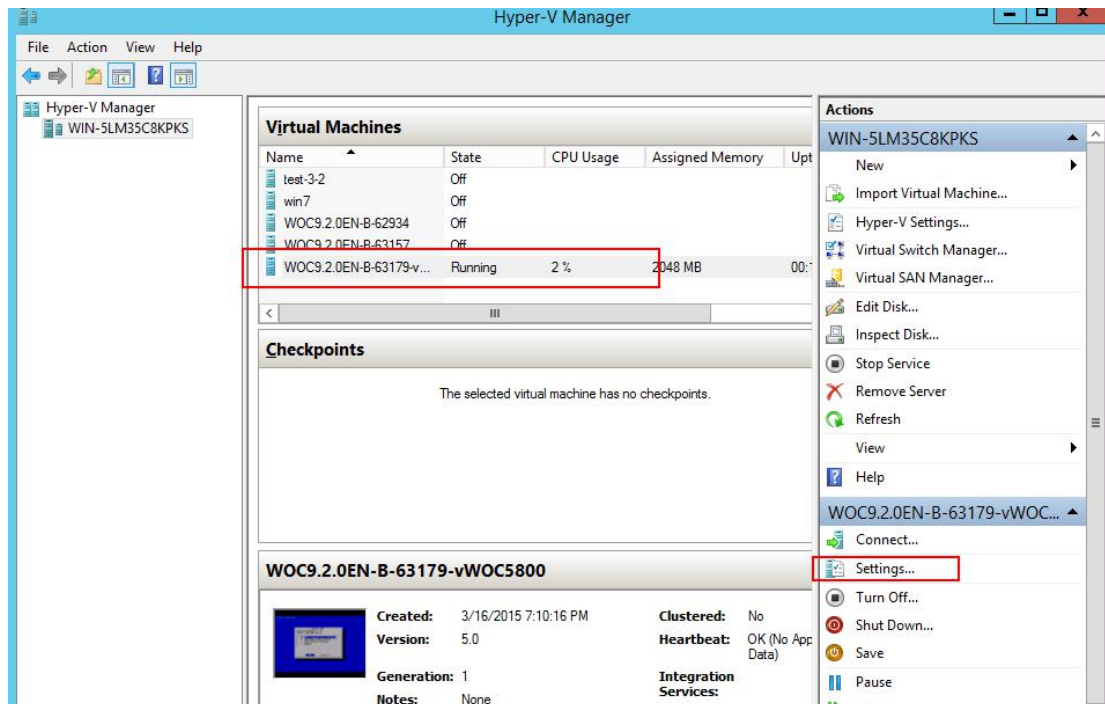


7.3.2 Configuration for Virtual WOC in Bridge Mode

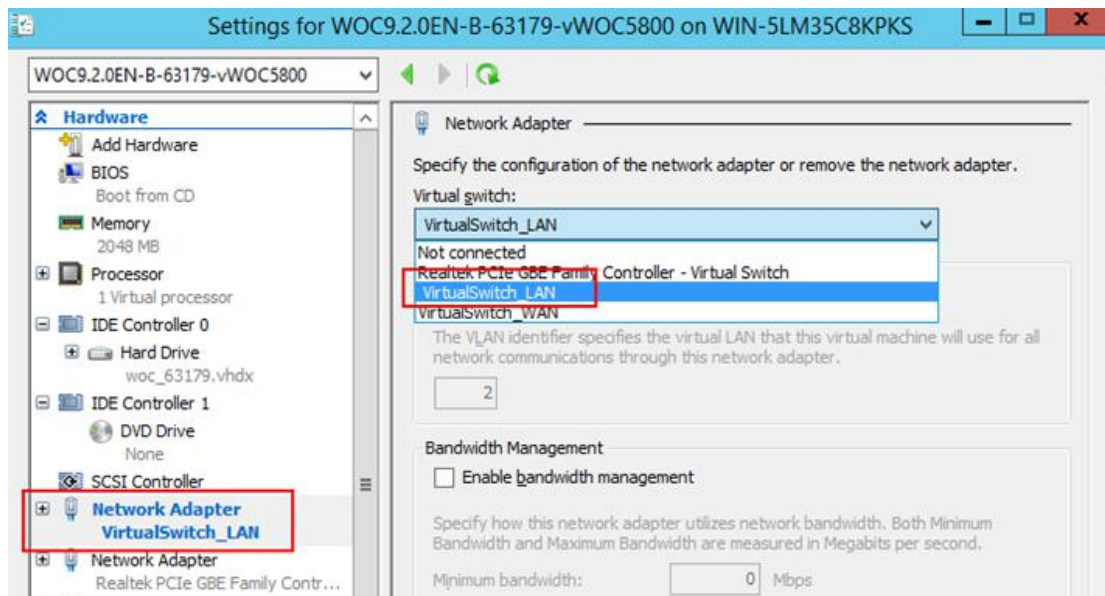
The configuration on **vSwitch** is the similar to that for virtual WOC deployed in Single-Arm mode. The difference is, virtual WOC in **Bridge** mode needs two virtual machine port groups (**vSwitch_1an** and **vSwitch_wan**), and **vSwitch_1an** is not connecting to any physical device.

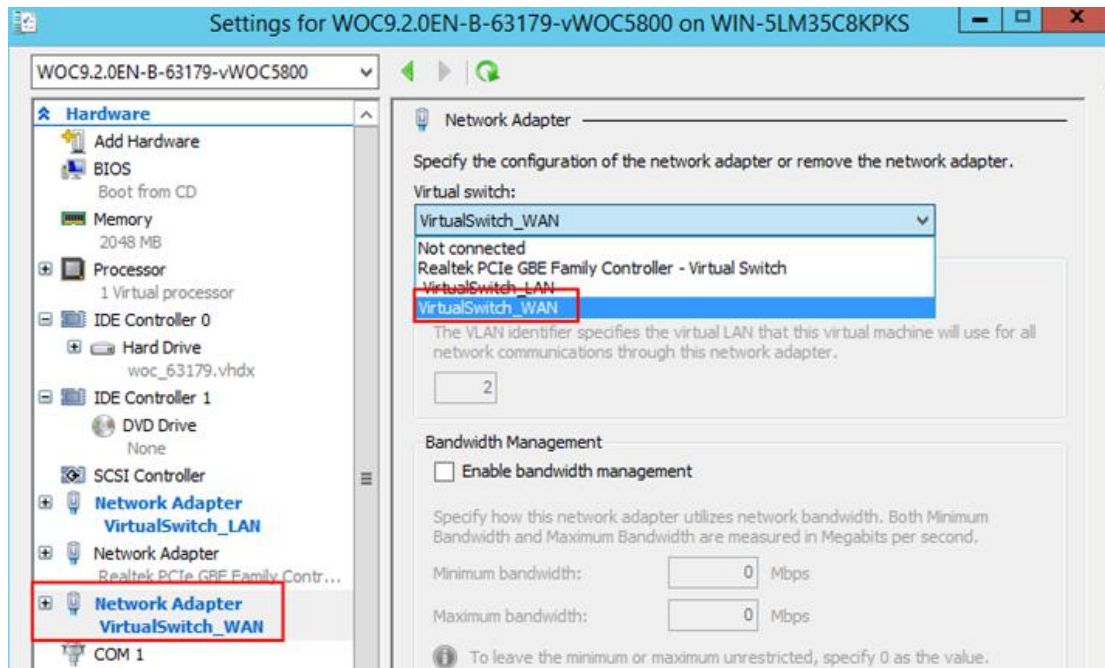
Use the following methods to achieve this configuration:

1. Log in to Hyper-V Manager. Select the VWoc which you import before. Click Settings as follows.



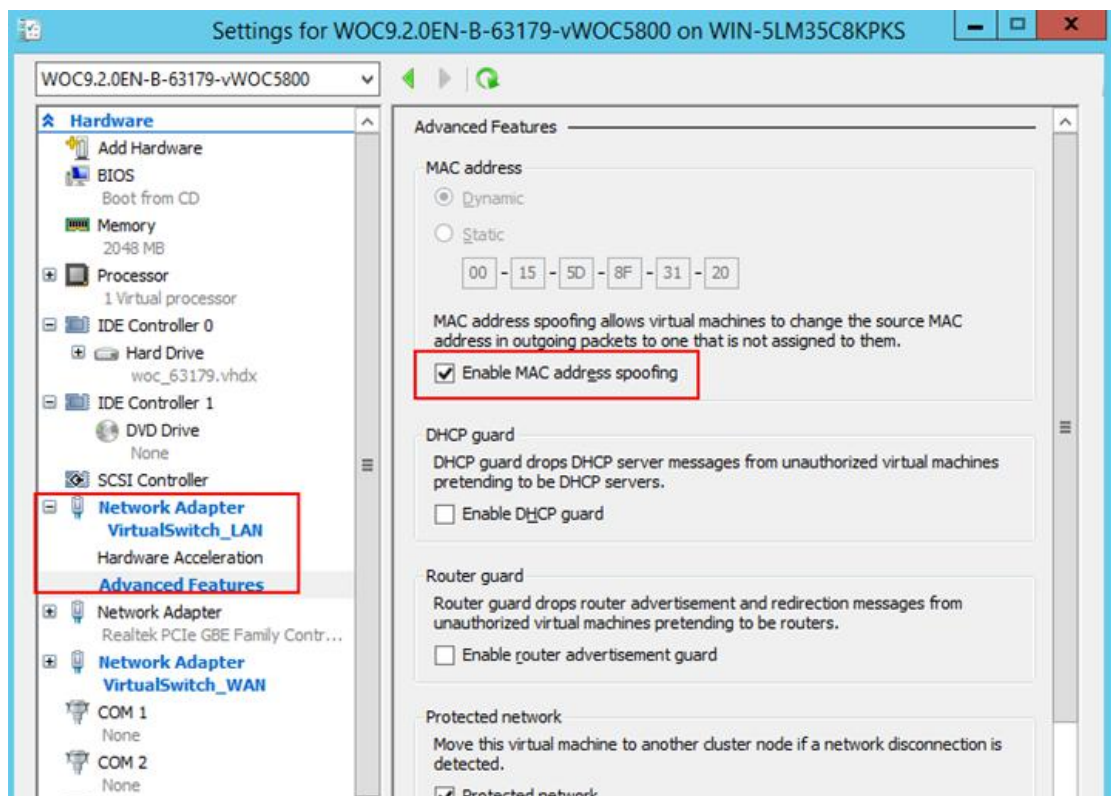
2. Specify the configuration of the network adapter as follows.



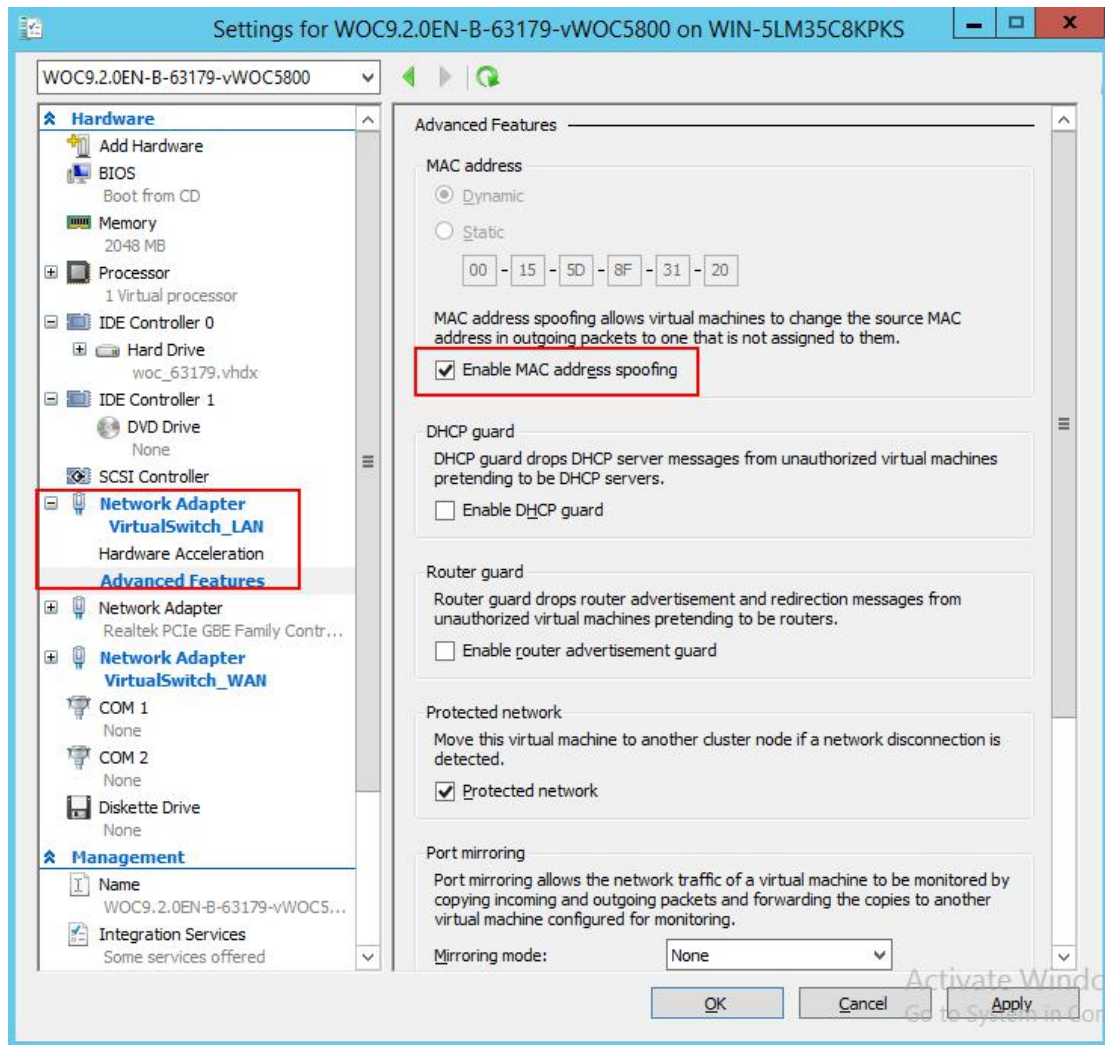


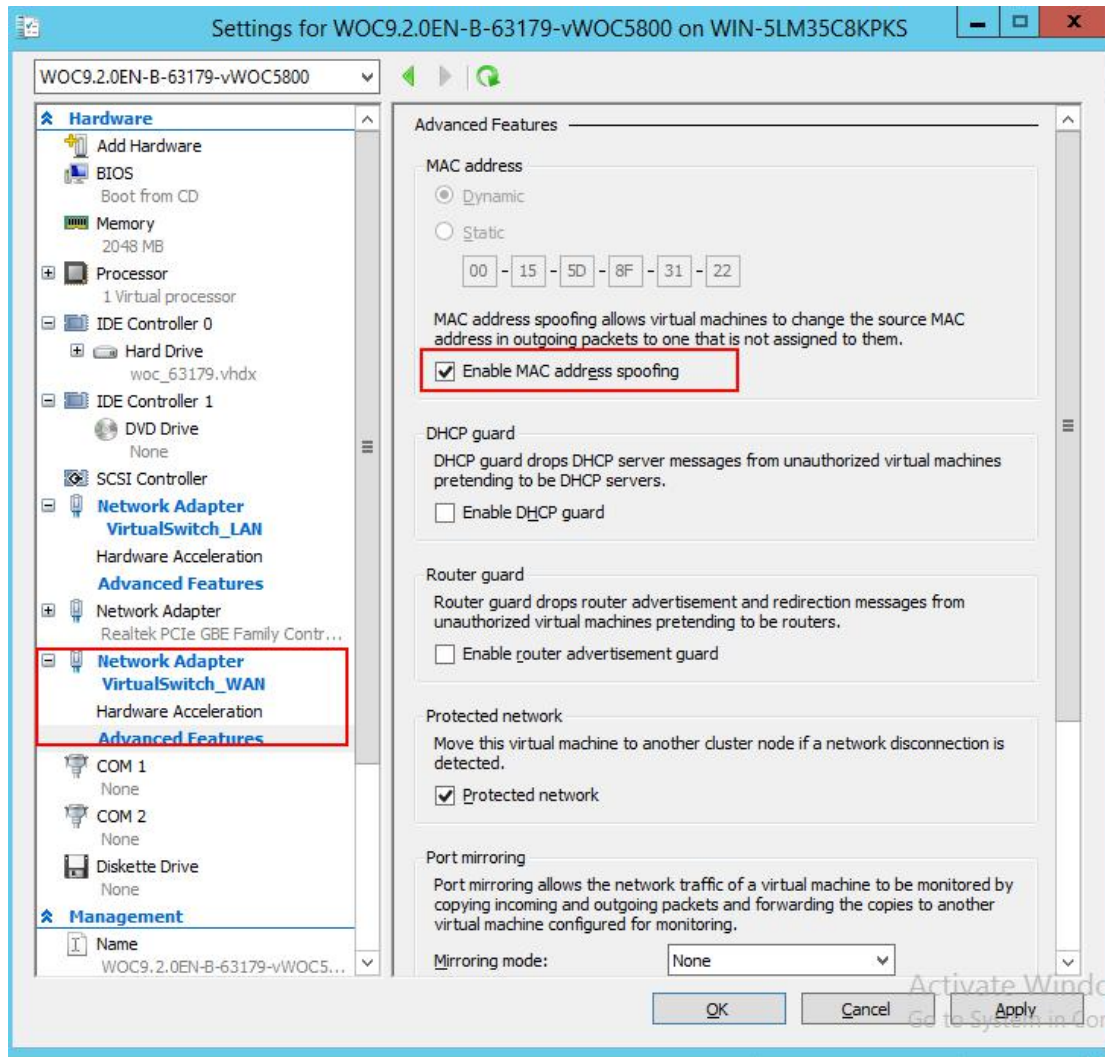
7.3.3 Associating Virtual WOC with Virtual Machine Port Group

In the Advanced Features, Enable MAC address spoofing as follows.



Note that virtual WOC does not support Bypass. When the virtual WOC gets down or stops working, other devices connecting to this virtual WOC will be disconnected from external network. For that reason, we do not recommended Bridge mode.





Technical Support:

Malaysia: 1700 81 7071

Hong Kong: +852 81257201

Singapore: +65 3152 9370

Other Regions: +60-12-7117511 (7129) Website: www.sangfor.com

Email: tech.support@sangfor.com

Google+: <https://plus.google.com/u/2/communities/101822213468566100572>