



**SANGFOR**

---

# SANGFOR WANO SSL Acceleration Guide

SANGFOR Technologies Co., Ltd.

23.June 2015



# WANO SSL Acceleration Guide

<b>WANO SSL ACCELERATION GUIDE.....</b>	<b>2</b>
<b>1.INFORMATION CONFIRM.....</b>	<b>3</b>
1.1 NETWORK CONFIRM.....	3
1.2 HOW TO CONFIRM.....	3
<b>2. PROCESS.....</b>	<b>3</b>
<b>3. CONFIGURATION.....</b>	<b>4</b>
<b>4. EFFECT.....</b>	<b>5</b>

# 1.Information Confirm

## 1.1 Network Confirm

SSL server IP address, service port, encryption algorithm.

Whether client need install client certificate to authenticated by SSL server, like e-bank system use USB-key.

## 1.2 How to confirm

Capture one normal connection packets and then analysis.

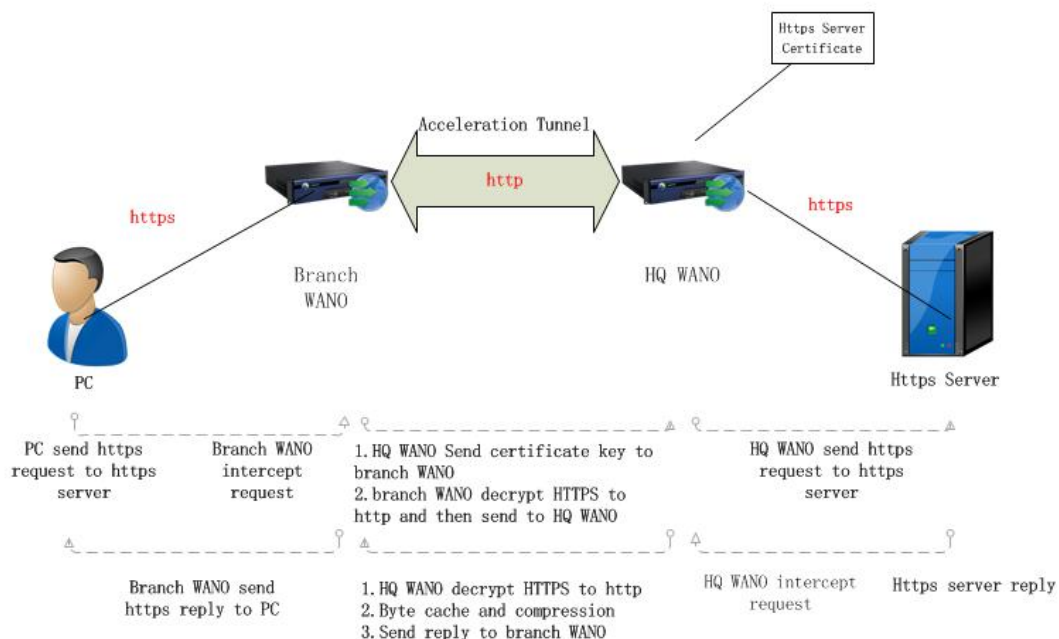
No.	Time	Source	Destination	Protocol	Length	Info
111	8.826037000	192.200.19.113	192.200.19.58	TCP	60	https > 62879 [ACK] Seq=1 Ack=130 win=15544 Len=0
112	8.826101000	192.200.19.113	192.200.19.58	TLSv1	784	Server Hello, Certificate, Server Hello Done
113	8.826936000	192.200.19.58	192.200.19.113	TLSv1	380	Client Key Exchange, Change Cipher Spec, Encrypted
114	8.833800000	192.200.19.113	192.200.19.58	TLSv1	113	Change Cipher Spec, Encrypted Handshake Message

Frame 113: 380 bytes on wire (3040 bits), 380 bytes captured (3040 bits) on interface 0  
 Ethernet II, Src: LiteonTe\_e8:8c:29 (74:de:2b:e8:8c:29), Dst: Vmware\_ef:f8:dc (00:0c:29:ef:f8:dc)  
 Internet Protocol Version 4, Src: 192.200.19.58 (192.200.19.58), Dst: 192.200.19.113 (192.200.19.113)  
 Transmission Control Protocol, Src Port: 62879 (62879), Dst Port: https (443), Seq: 130, Ack: 731, Len: 326  
 Secure Sockets Layer

# 2. Process

Server certificate: this certificate used to decrypt SSL, so it must contain private key.

CA certificate: this certificate used to authenticate client certificate, so it must exist with client certificate. (If client not need install client certificate ,WANO don't need import CA certificate)



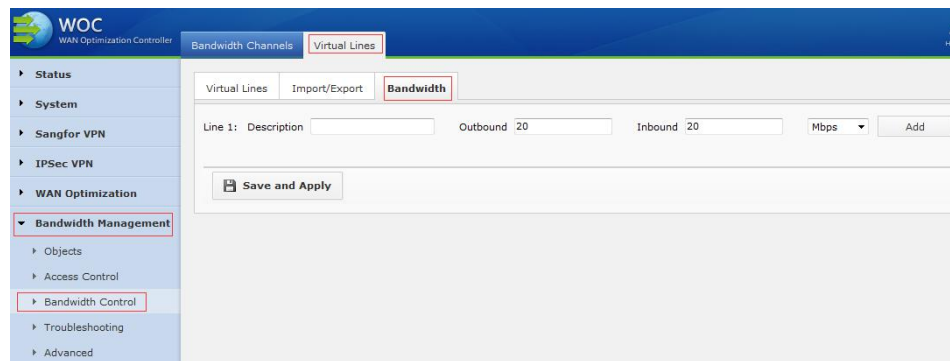
## 3. Configuration

A. Export SSL certificate from SSL server.

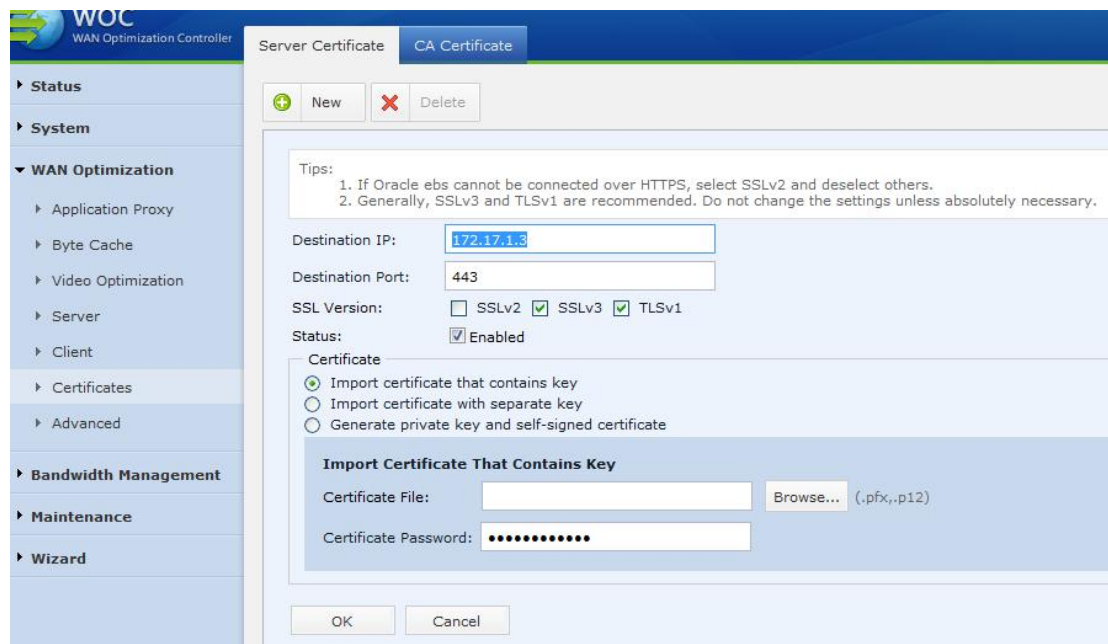


IIS SSL  
Certificate Export

[https://WANO\\_IP/html/wanacc/help/us\\_es/IIS\\_SSL\\_Certificate\\_Export\\_Guide.html](https://WANO_IP/html/wanacc/help/us_es/IIS_SSL_Certificate_Export_Guide.html)



B. Import to SSL server side WANO.



C. Import CA certificate to SSL server side WANO. (CA certificate provided by customer, If client not need install client certificate ,WANO don't need import CA certificate)

D. Enable speed up HTTPS.

WOC WAN Optimization Controller

Policy Policy Group Users

HEALTH REPORTS Log Out About

Status

System

WAN Optimization

- Application Proxy
- Byte Cache
- Video Optimization
- Server
- Client
- Certificates
- Advanced

Bandwidth Management

New Delete

Name: Default for gateway

Description: Default policy group for inbound connections from remote WOC. Speed up all automatically.

Policy Name	Application	Dst. IP Group	Action	Move
Speed up CIFS	cifs	All IP	Enable:CIFS Proxy,Byte Cache,G...	<a href="#">Up</a> <a href="#">Down</a>
Speed up HTTP	http	All IP	Enable:HTTP Proxy,Byte Cache,G...	<a href="#">Up</a> <a href="#">Down</a>
<input checked="" type="checkbox"/> Speed up HTTPS	https	All IP	Enable:HTTP Proxy,SSL accelerati...	<a href="#">Up</a> <a href="#">Down</a>
Speed up SMTP	smtp	All IP	Enable:SMTP Proxy,Byte Cache,G...	<a href="#">Up</a> <a href="#">Down</a>

## 4. Effect

