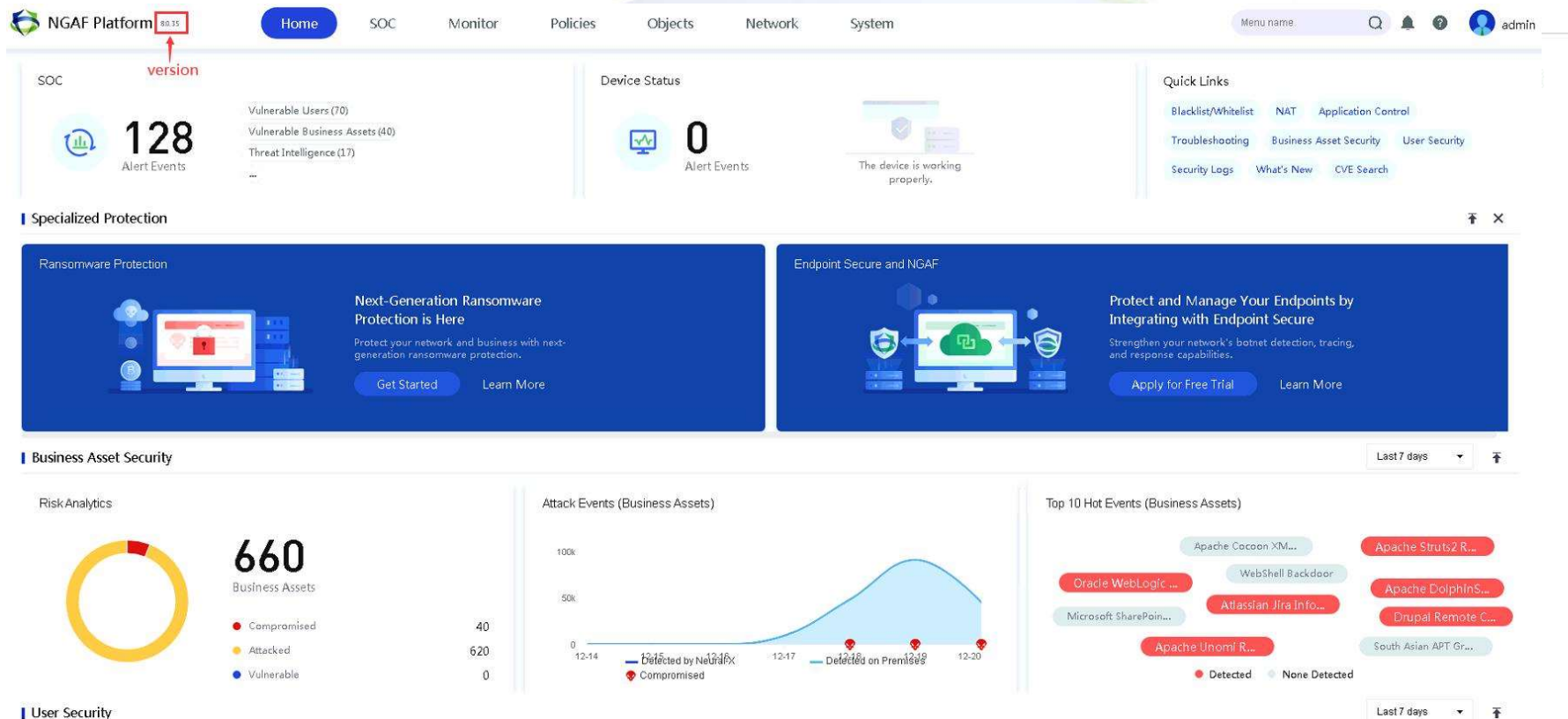


How to login NGAF



Default IP address of manage port (EHT0): 10.251.251.251

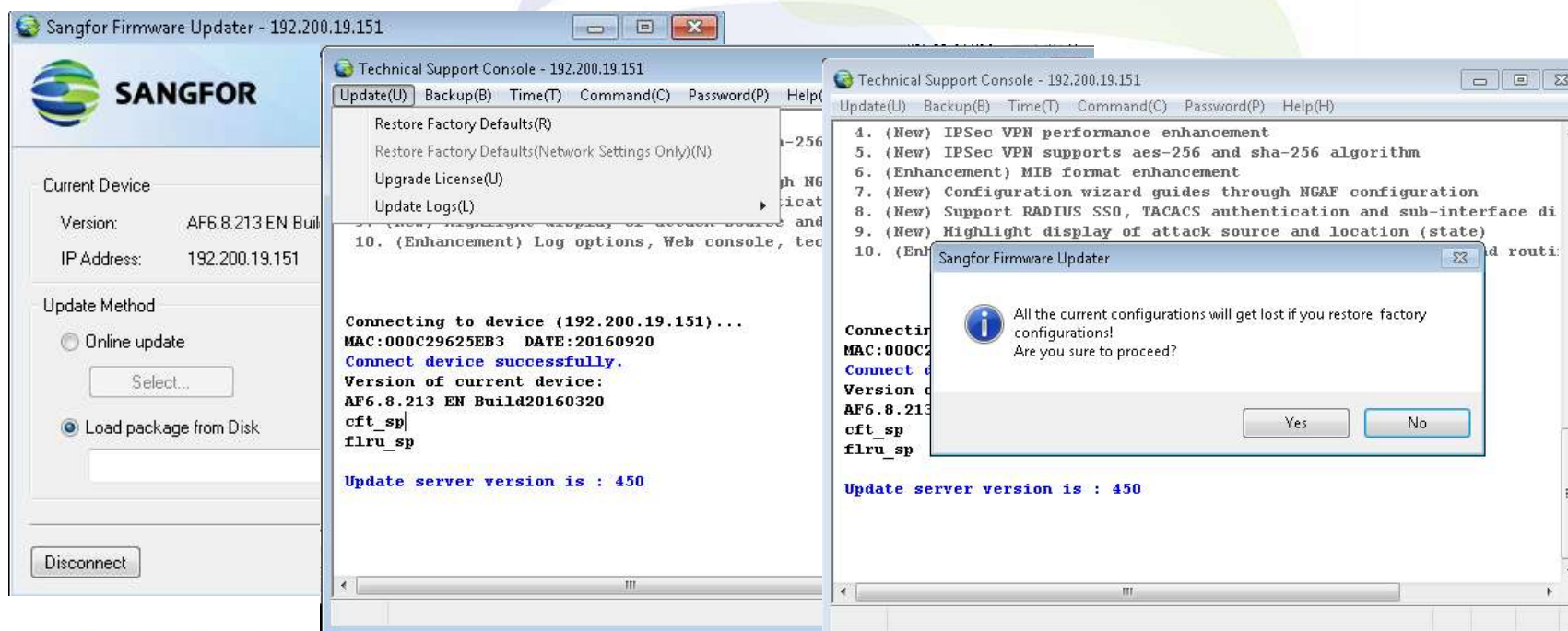
Default username/password is admin/admin



How to restore NGAF to defaults

Restore NGAF with updater:

1. Connect to NGAF with firmware updater.
2. Press F10, and choose the Restore Factory Defaults.
3. Choose the corresponding update package and restore it.



How to restore NGAF to defaults



Go to **System > Maintenance > Backup/Restore**, restore NGAF to defaults with WebUI:

Backup/Restore

Back Up Configuration

 Download

Restore Configuration

Method 1: Restore from auto backup file

2020-12-21 00:00:04

Restore

Method 2: Restore from backup on local PC

Select *.bcf file



Restore

Restore to Factory Defaults

 Restore to Factory Defaults

How to reset the NGAF password

Restore password with USB Drive:

1. Create an empty txt file named reset-password.txt or Copy the reset-password.txt file to the root directory of U Disk;
2. Insert the U disk, restart the device;
3. When the device can normally log on the WebUI, pull out the U disk;
4. See the results of the U disk file reset-password.log, If the recovery is successful, record the restored console password in this file, otherwise the log is recorded the recovery failure information.

Notes:

1. This TXT file can be directly on the windows system to establish a empty TXT file, the file name to reset-password.txt;
2. The txt file must be in the root directory of the U disk;
3. U disk can be single or multiple partitions. A single partition of the U disk format must be FAT32; multi partition U disk must put the txt file in the first partition, and the first partition format must be FAT32.