

#Troubleshooting#Migrate VMware to HCI

Product Version

Product : HCI and SCP

Version : 6.9.1

Issue Description

We were facing the issue to Migrate over initial Infrastructure VMs from VMware to Sangfor HCI, we were trying to export **ovf** from VMware and imported to HCI but its timing taking process.

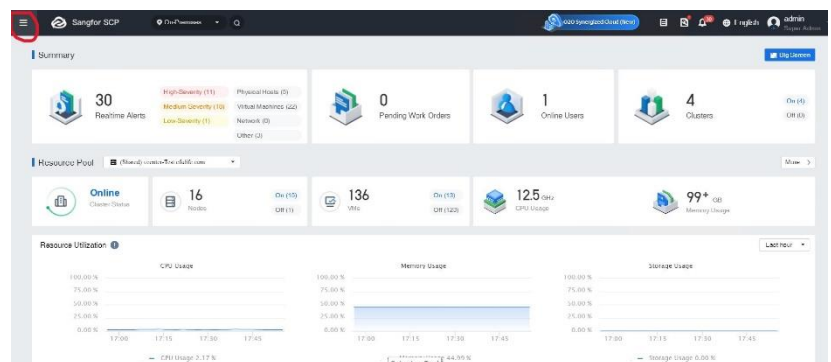
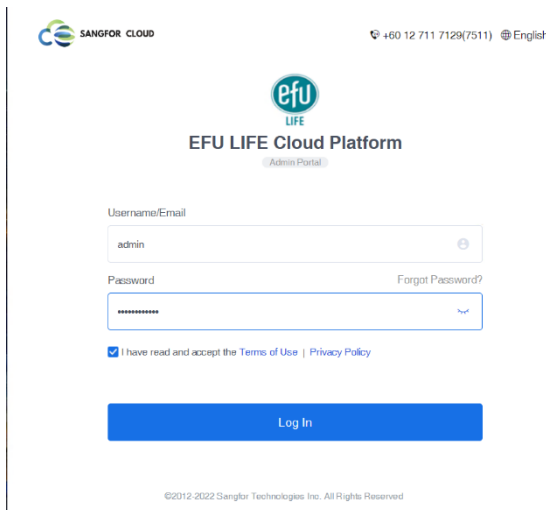
Handling Process

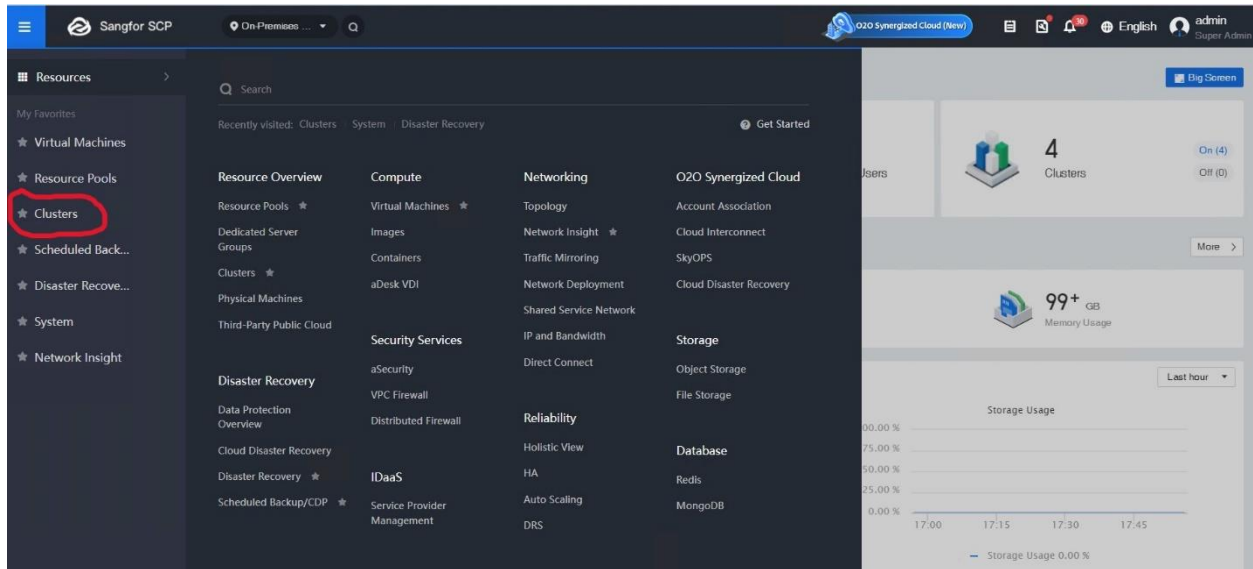
After some digging in SCP ,we find out the easiest way to migrate from VMware to HCI , SCP is supporting the VCenter as a Cluster, we added the Vcenter as a cluster in SCP and migrate multiple VM's from VMware to HCI Easily without any hurdle.

Solution

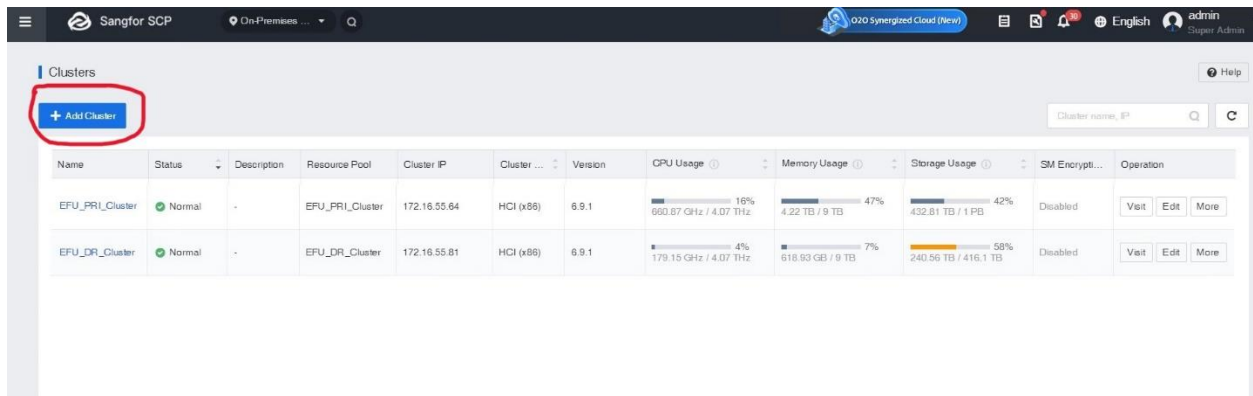
First, you need to add the Vcenter as a Cluster in SCP.

- Login SCP and go to Menu bar and select Cluster.

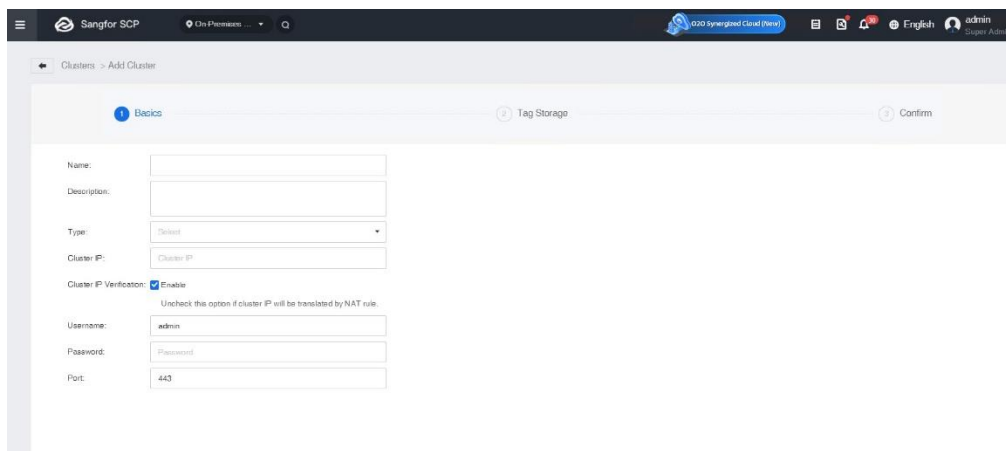




Click on Add Cluster Button.



Fill all Blank Column.



In Type, you will be select VMware.

Clusters > Add Cluster

1 Basics 2 Tag Storage 3 Confirm

Name: vcenter-live

Description:

Type: Select

Cluster IP:

Cluster IP Verification:

Username: admin

Password:

Port: 443

After

Complete all the details Click next and finish.

Clusters > Add Cluster

1 Basics 2 Tag Storage 3 Confirm

Name: vcenter-live

Description:

Type: VMware

Cluster IP: 192.168.0.1

Username: administrator

Password:

Port: 443

You will see in cluster tab Vcenter is showing now,

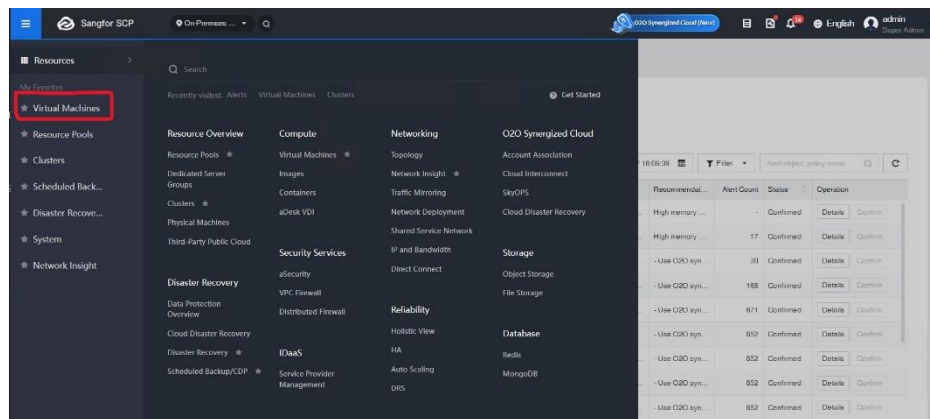
Clusters

+ Add Cluster

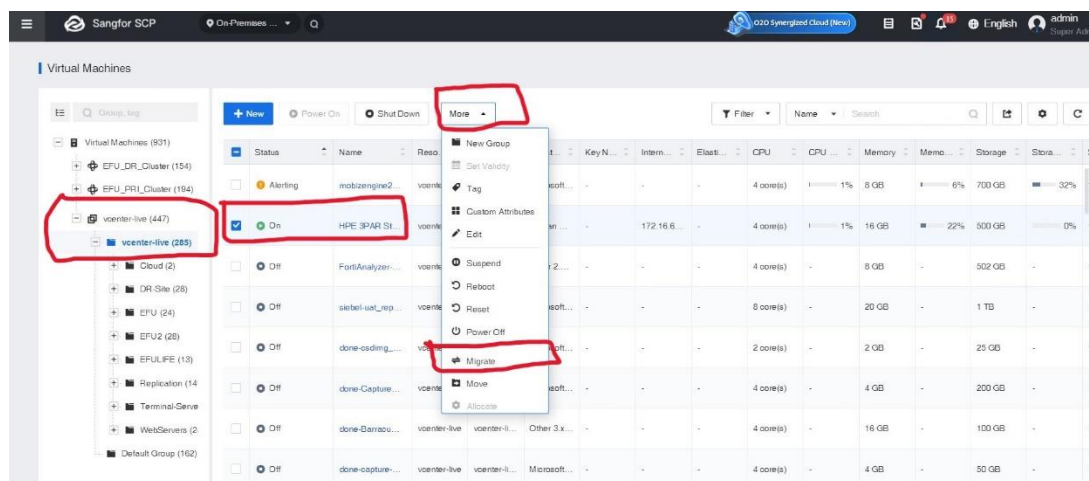
Cluster name, IP

Name	Status	Description	Resource Pool	Cluster IP	Cluster	Version	CPU Usage	Memory Usage	Storage Usage	SM Encrypt...	Operation
vcenter-live	Alert	live vcenter	vcenter-live	132.147.156.67	VMware	6.0.0	4% 38.63 GHz / 876.37 GHz	36% 1.1 TB / 3.09 TB	64% 135.92 TB / 210.97 TB	Disabled	Edit More
EPU_PRI_Cluster	Normal	-	EPU_PRI_Cluster	172.16.55.64	HCI (x86)	6.9.1	16% 651.84 GHz / 4.07 THz	47% 4.21 TB / 9 TB	42% 432.61 TB / 1 PB	Disabled	Visit Edit More
EPU_DR_Cluster	Normal	-	EPU_DR_Cluster	172.16.55.81	HCI (x86)	6.9.1	6% 229.45 GHz / 4.07 THz	7% 619.15 GB / 9 TB	58% 240.56 TB / 416.1 TB	Disabled	Visit Edit More

Go to the Menu and select the Virtual Machine tab.



You will see on Left side VMware → Click on that and on Right side select the VM which you want to migrate and Click on More Button and then migrate option.



Select your desired data store and run location then next and finish it will start migrate from Vmware to HCI.

